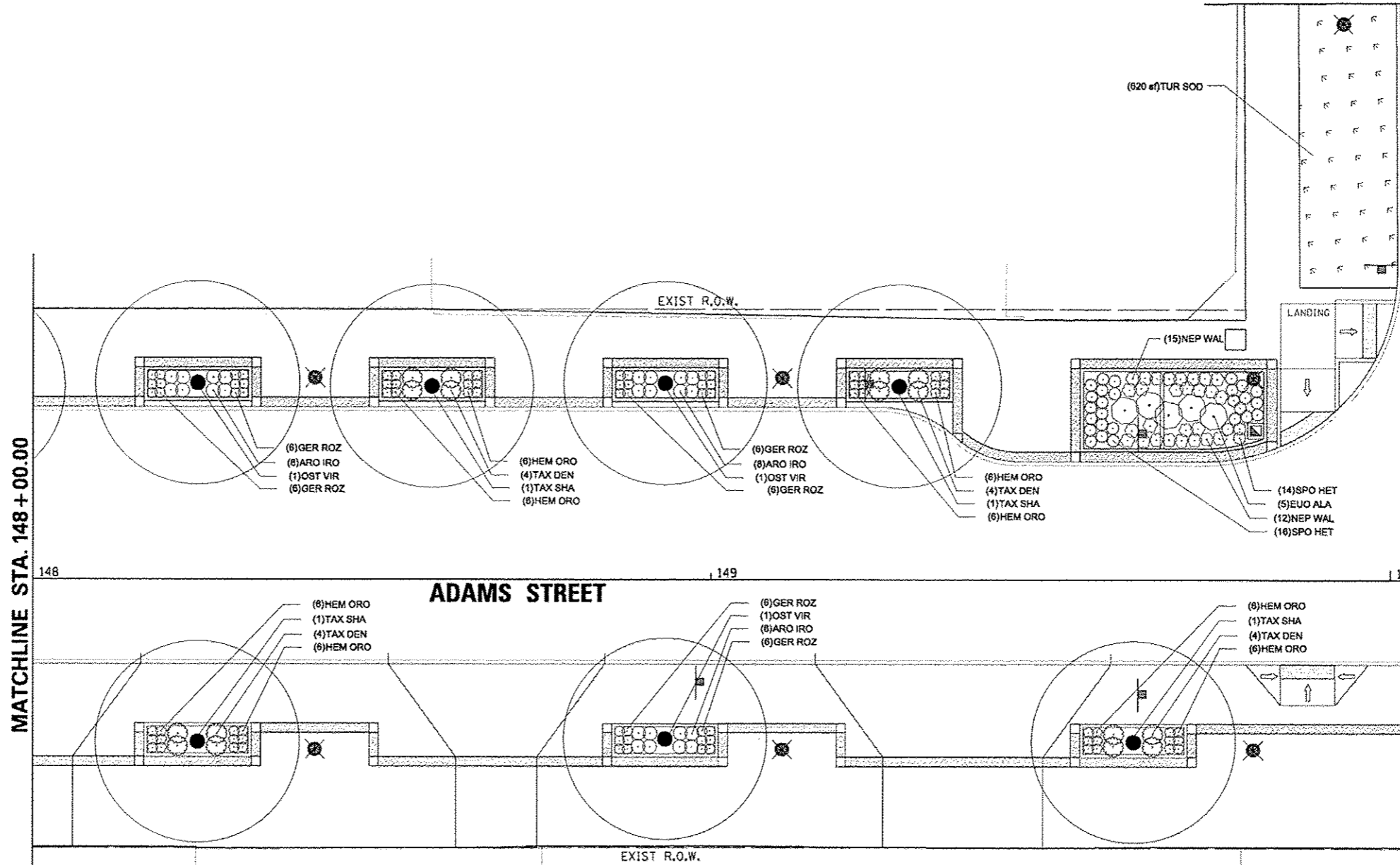


MATCHLINE STA. 749+15.00

ELM STREET

MATCHLINE STA. 150+20.00



MATCHLINE STA. 148+00.00

148

149

150+00

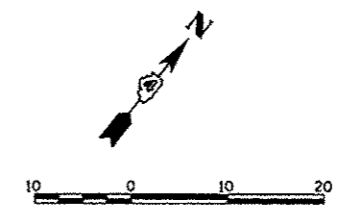
ADAMS STREET

PLANT SCHEDULE ADAMS - MAPLE TO ELM

TREES	QTY	BOTANICAL NAME	COMMON NAME	SIZE	REMARKS
OST VIR	6	Ostrya virginiana	American Hopbroom	2" Cal	PAY ITEM # A2005616
TAX SHA	6	Taxodium distichum 'Shawnee Brave' TM	Shawnee Brave Bald Cypress	2" Cal	PAY ITEM # A2007716
SHRUBS	QTY	BOTANICAL NAME	COMMON NAME	SIZE	REMARKS
ARO IRO	48	Aronia melanocarpa 'Iroquois Beauty' TM	Iroquois Beauty Black Chokeberry	24" Tall	PAY ITEM # C2C00324
EUO ALA	6	Euonymus alata 'Compacta'	Dwarf Winged Euonymus	3" Tall	PAY ITEM # C2002838
TAX DEN	24	Taxus x media 'Densiflora'	Donso Yew	2" Wide	PAY ITEM # D2003524
VIB BLU	8	Viburnum dentatum 'Christina' TM	Blue Muffin Viburnum	24" Tall	PAY ITEM # C2C11752
ANNUALS/PERENNIALS	QTY	BOTANICAL NAME	COMMON NAME	SIZE	REMARKS
AMS HUB	54	Amsinlia hubrichtii	Arkansas Blue-star	1 gal	PAY ITEM # K0012890
GER ROZ	72	Geranium x 'Rozanne' TM	Rozanne Cranesbill	1 gal	PAY ITEM # K0012890
HEM ORO	72	Hemerocallis x 'Stella de Oro'	Stella de Oro Daylily	1 gal	PAY ITEM # K0012890
HEM STR	73	Hemerocallis x 'Strawberry Candy' TM	Strawberry Candy Daylily	1 gal	PAY ITEM # K0012890
NEP WAL	27	Nepeta x faassoni 'Walkers Low'	Walkers Low Catmint	1 gal	PAY ITEM # K0012890
GRASSES	QTY	BOTANICAL NAME	COMMON NAME	SIZE	REMARKS
PAN SHA	19	Panicum virgatum 'Shenandoah'	Burgundy Switch Grass	3 gal	PAY ITEM # K0012893
SPO HET	30	Sporobolus heterolepis	Prairie Dropseed	1 gal	PAY ITEM # K0012890

H3 STEEL

H3 STEEL



FILE NAME *	USER NAME * mansk.01390	DESIGNED - JLH	REVISED -
c:\pwise\work\do_no_delete\des73427\04\01\0155-shc\plant\005.dgn		DRAWN - JLH	REVISED -
		CHECKED - BAB	REVISED -
		DATE - 7/18/12	REVISED -

STATE OF ILLINOIS
DEPARTMENT OF TRANSPORTATION

ADAMS STREET
PLANTING PLAN
SCALE: 1"=10'
SHEET NO. OF SHEETS
STA. 148+00 TO STA. 150+20

F.A.U. RTE.	SECTION	COUNTY	TOTAL SHEETS	SHEET NO.
883	12-00356-01-PV	PEORIA	519	329
CONTRACT NO. 89626				
ILLINOIS FED. AID PROJECT T16-909315B				

