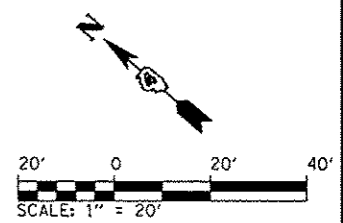
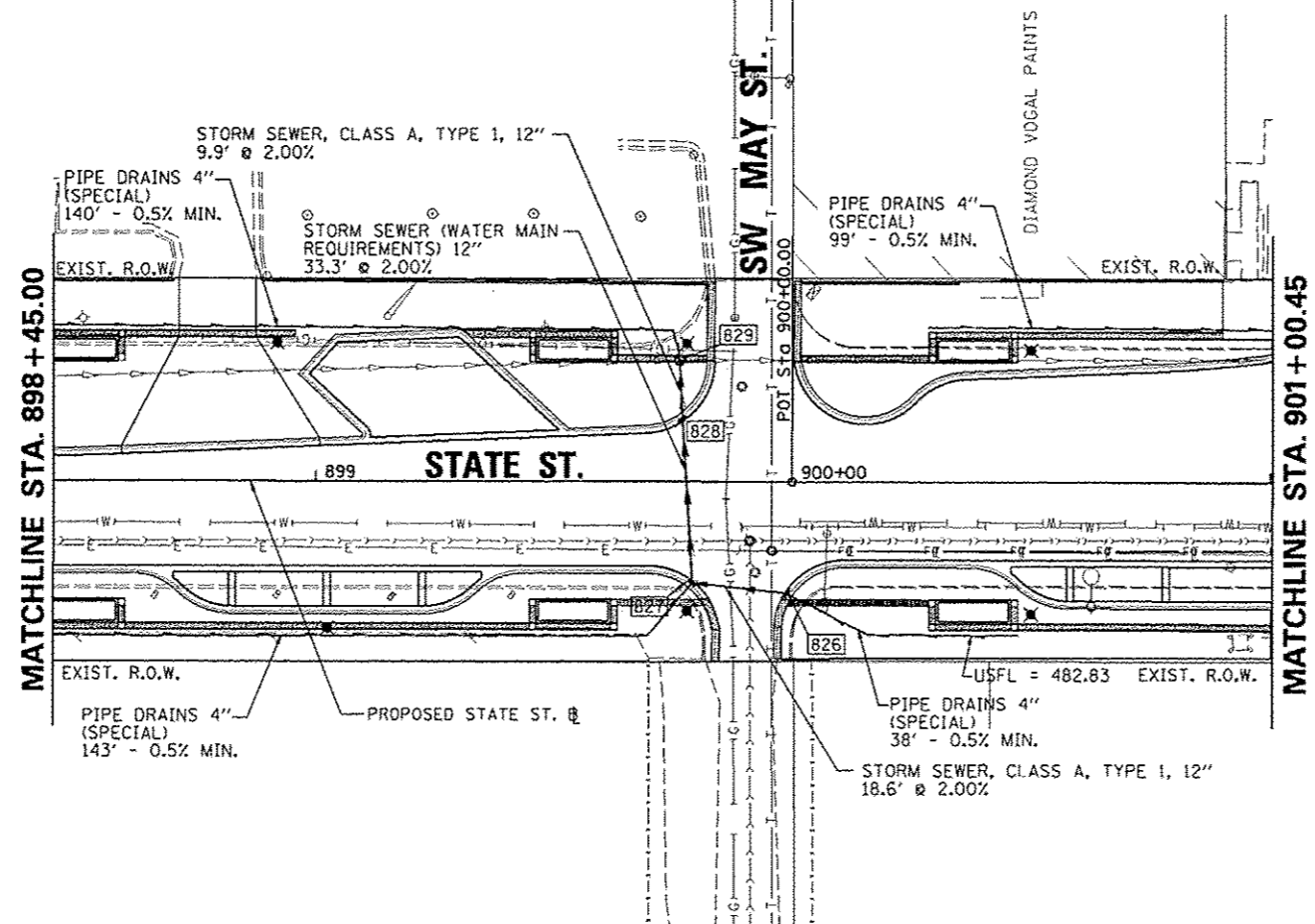


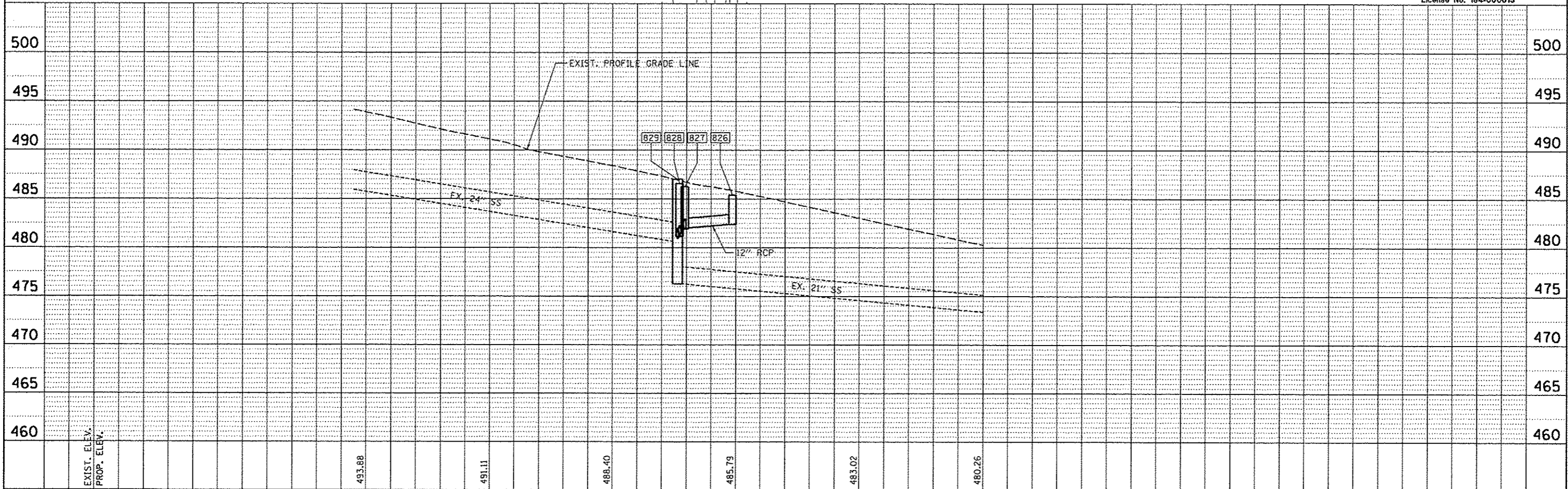
- 826 STA. 899+98.65, 23.2' RT.
INLET, TY C-1
RIM = 485.48
INV (NW) = 482.39
INV (S) = 482.64
- 827 STA. 899+79.28, 21.0' RT.
DRYWELL, TY G-1, 4' DIA.
RIM = 486.45
INV (SE) = 482.02
INV (NE) = 481.92
INV (W) = 483.95
- 828 STA. 899+77.21, 12.8' LT.
INLET, TY C-1
RIM = 486.61
INV (SW) = 481.25
INV (NE) = 481.15
- 829 STA. 899+76.43, 25.3' LT
MH, TY A, 4' DIA., T-1 F, CL
RIM = 487.12
INV (SW) = 480.95
INV (NW) = 480.63 (EX.)
INV (SE) = 476.28 (EX.)
INV (N) = 484.62



PLAN	DATE
BY	
CHECKED	
DATE	
FILE NAME	

PROFILE	DATE
BY	
CHECKED	
DATE	
FILE NAME	

CMT
CRAWFORD, MURPHY & TILLY, INC.
CONSULTING ENGINEERS
License No. 184-000613



FILE NAME =	USER NAME = kovan01811	DESIGNED - RMM	REVISED -	STATE OF ILLINOIS DEPARTMENT OF TRANSPORTATION	STATE STREET DRAINAGE PLAN AND PROFILE		F.A.U. RTE. 12-00356-01-PV	COUNTY PEORIA	TOTAL SHEETS 519	SHEET NO. 233
al\p\se\work\do_not_delete\dmr73472\0418	0155-shr-drain-pnpl08.dgn	DRAWN - RJE	REVISED -		SCALE: 1" = 20'	SHEET NO. OF SHEETS	STA. 898+45.00 TO STA. 901+00.45	CONTRACT NO. 89626		
	PLOT SCALE = 39.9999 1/2 in.	CHECKED - EJM	REVISED -					ILLINOIS FED. AID PROJECT T16-5093(158)		
	PLOT DATE = 07/23/2012	DATE - 7/18/12	REVISED -							