
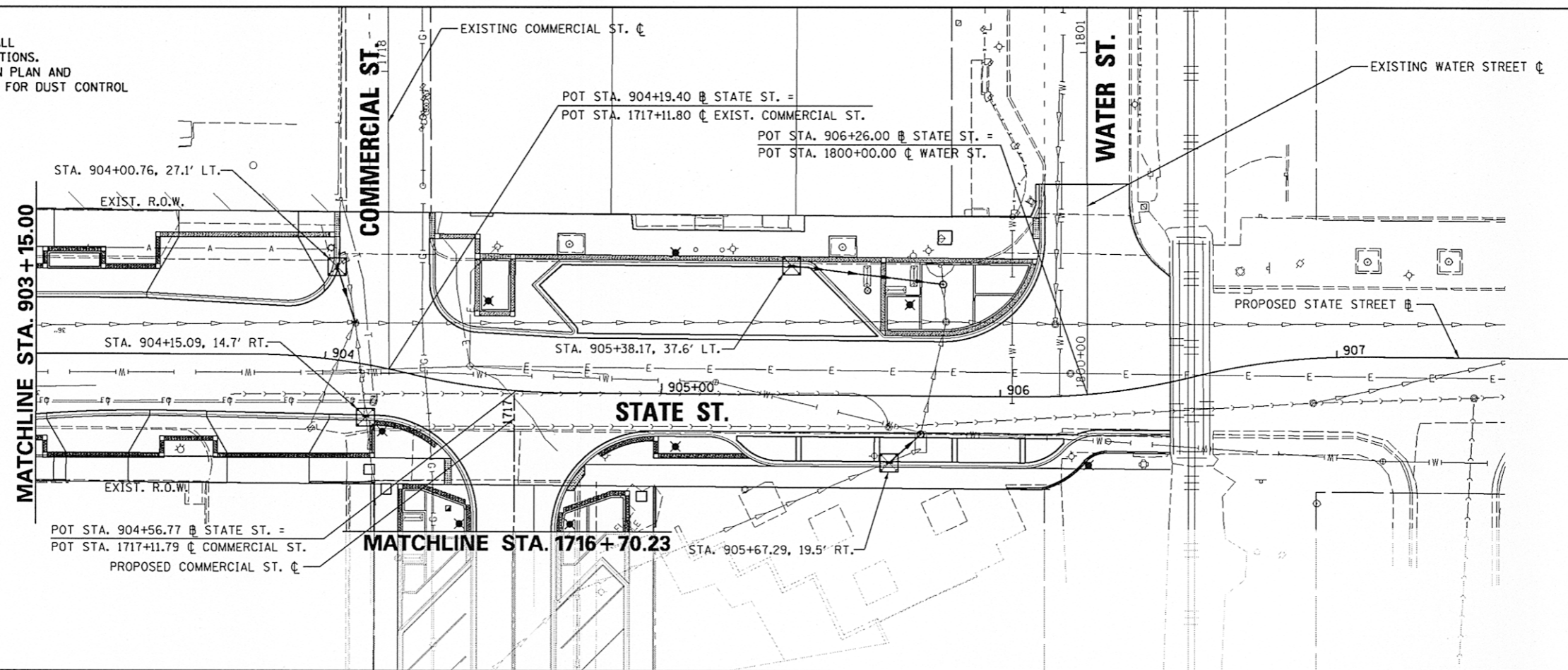
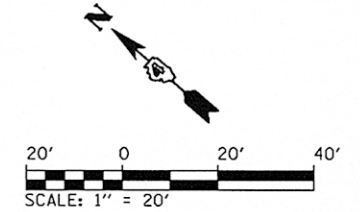


- NOTES:
1. INLET FILTERS SHALL BE PROVIDED AT ALL EXISTING STORM SEWER STRUCTURE LOCATIONS.
 2. SEE STORM WATER POLLUTION PREVENTION PLAN AND PROVISIONS OF THE NPDES PERMIT ILR10 FOR DUST CONTROL CLEANING OF PAVEMENT REQUIREMENTS.

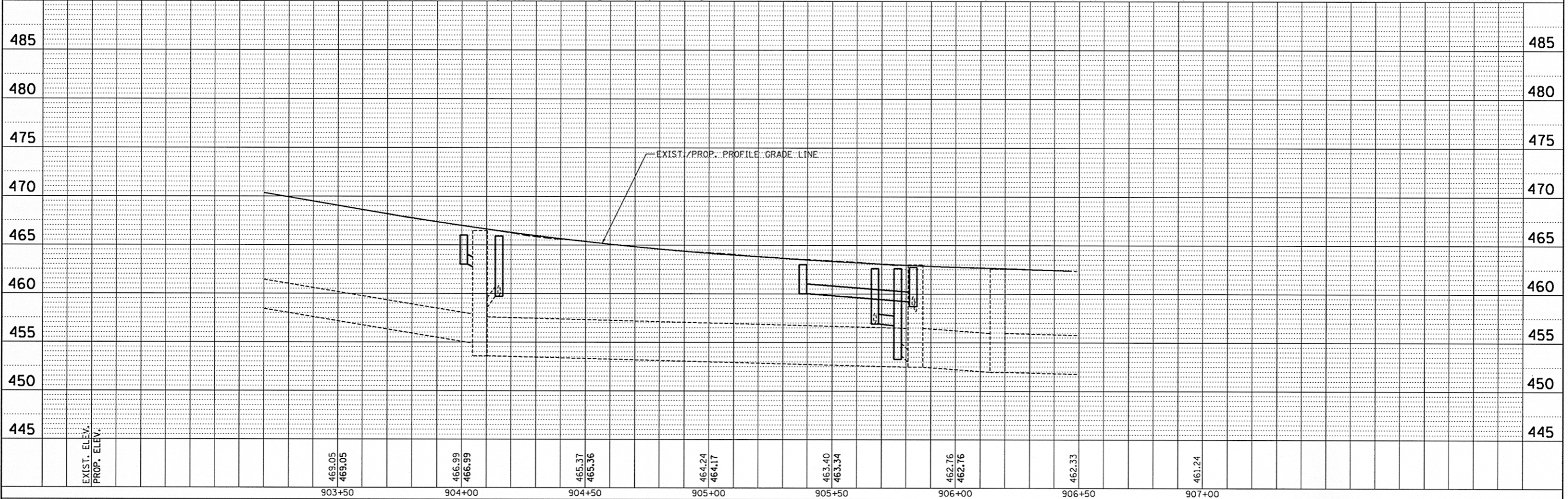
LEGEND


INLET FILTERS 



PLAN	REVISIONS	DATE
NO.	BY	
NO.	BY	
NO.	BY	
NO.	BY	
NO.	BY	

PROFILE	REVISIONS	DATE
NO.	BY	
NO.	BY	
NO.	BY	
NO.	BY	
NO.	BY	



 **CMT**
CRAWFORD, MURPHY & TILLY, INC.
CONSULTING ENGINEERS
License No. 184-000613

© Copyright CMT, Inc.

FILE NAME =	USER NAME = kovan01511	DESIGNED - RMM	REVISED -	STATE OF ILLINOIS DEPARTMENT OF TRANSPORTATION	STATE STREET EROSION CONTROL PLAN				F.A.U. RTE.	SECTION	COUNTY	TOTAL SHEETS	SHEET NO.
c:\pwise\work\do_not_delete\dms73328\041018155-ahr-erol189.dgn		DRAWN - RJE	REVISED -		12-00356-01-PV	PEORIA	519	205					
PLOT SCALE = 39.9999' / in.		CHECKED - E.JH	REVISED -		CONTRACT NO. 89626								
PLOT DATE = 07/23/2012		DATE - 7/18/12	REVISED -		ILLINOIS FED. AID PROJECT TIG-509311581								
				SCALE: 1" = 20'	SHEET NO. OF SHEETS	STA. 903+15.00 TO STA. 906+46.43							