

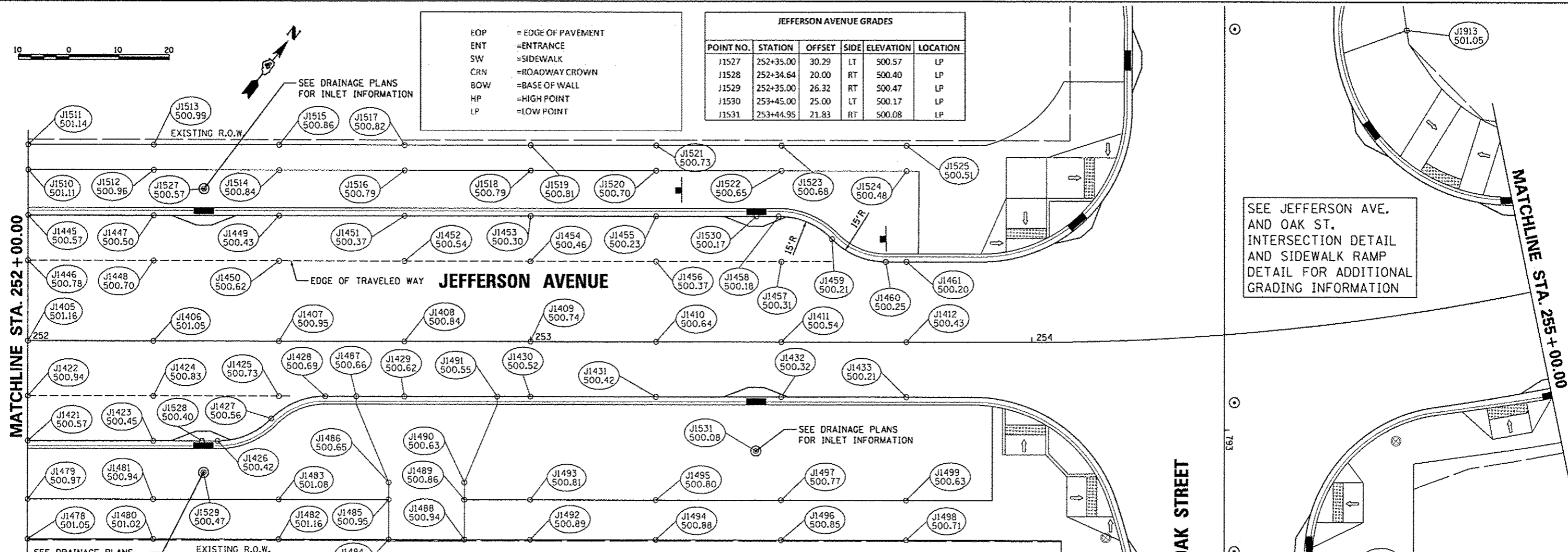


- EOP = EDGE OF PAVEMENT
- ENT = ENTRANCE
- SW = SIDEWALK
- CRN = ROADWAY CROWN
- BOW = BASE OF WALL
- HP = HIGH POINT
- LP = LOW POINT

JEFFERSON AVENUE GRADES					
POINT NO.	STATION	OFFSET	SIDE	ELEVATION	LOCATION
J1527	252+35.00	30.29	LT	500.57	LP
J1528	252+34.64	20.00	RT	500.40	LP
J1529	252+35.00	26.32	RT	500.47	LP
J1530	253+45.00	25.00	LT	500.17	LP
J1531	253+44.95	21.83	RT	500.08	LP

MATCHLINE STA. 252 + 00.00

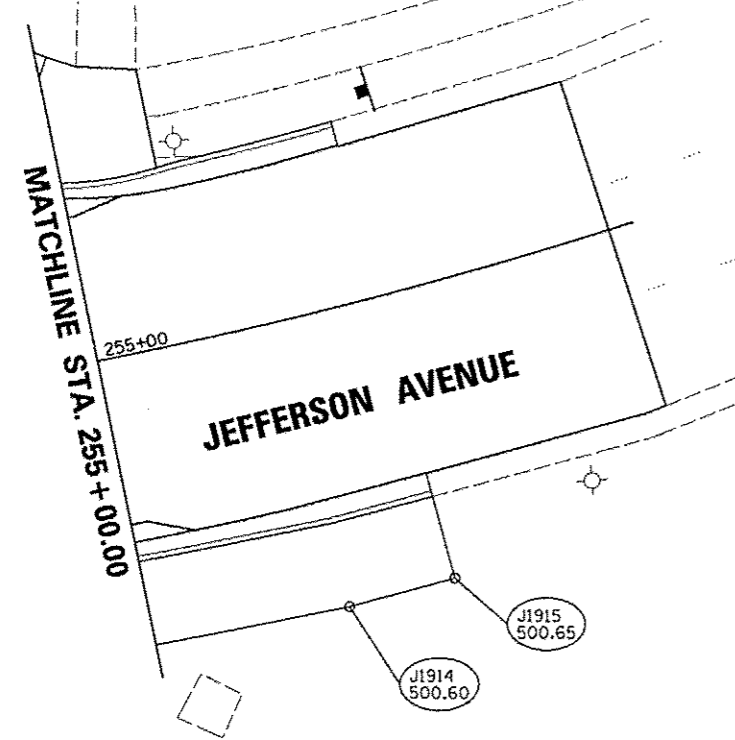
MATCHLINE STA. 255 + 00.00



SEE JEFFERSON AVE. AND OAK ST. INTERSECTION DETAIL AND SIDEWALK RAMP DETAIL FOR ADDITIONAL GRADING INFORMATION

SEE DRAINAGE PLANS FOR INLET INFORMATION

SEE DRAINAGE PLANS FOR INLET INFORMATION



JEFFERSON AVENUE GRADES					
POINT NO.	STATION	OFFSET	SIDE	ELEVATION	LOCATION
J1405	252+00.00	0.00	RT	501.16	CRN
J1406	252+25.00	0.00	RT	501.05	CRN
J1407	252+50.00	0.00	RT	500.95	CRN
J1408	252+75.00	0.00	RT	500.84	CRN
J1409	253+00.00	0.00	RT	500.74	CRN
J1410	253+25.00	0.00	RT	500.64	CRN
J1411	253+50.00	0.00	RT	500.54	CRN
J1412	253+75.00	0.00	RT	500.43	CRN
J1421	252+00.00	20.00	RT	500.57	EOP
J1422	252+00.00	11.00	RT	500.94	EOP
J1423	252+25.00	20.00	RT	500.45	EOP
J1424	252+25.00	11.00	RT	500.83	EOP
J1425	252+50.00	11.00	RT	500.73	EOP
J1426	252+37.79	20.00	RT	500.42	EOP
J1427	252+48.51	15.50	RT	500.56	EOP
J1428	252+59.22	11.00	RT	500.69	EOP
J1429	252+75.00	11.00	RT	500.62	EOP
J1430	253+00.00	11.00	RT	500.52	EOP
J1431	253+25.00	11.00	RT	500.42	EOP
J1432	253+50.00	11.00	RT	500.32	EOP
J1433	253+75.00	11.00	RT	500.21	EOP
J1445	252+00.00	25.00	LT	500.57	EOP
J1446	252+00.00	16.00	LT	500.78	EOP
J1447	252+25.00	25.00	LT	500.50	EOP
J1448	252+25.00	16.00	LT	500.70	EOP
J1449	252+50.00	25.00	LT	500.43	EOP
J1450	252+50.00	16.00	LT	500.62	EOP
J1451	252+75.00	25.00	LT	500.37	EOP
J1452	252+75.00	16.00	LT	500.54	EOP
J1453	253+00.00	25.00	LT	500.30	EOP

JEFFERSON AVENUE GRADES					
POINT NO.	STATION	OFFSET	SIDE	ELEVATION	LOCATION
J1454	253+00.00	16.00	LT	500.46	EOP
J1455	253+25.00	25.00	LT	500.23	EOP
J1456	253+25.00	16.00	LT	500.37	EOP
J1457	253+50.00	16.00	LT	500.31	EOP
J1458	253+49.43	25.00	LT	500.18	EOP
J1459	253+60.14	20.50	LT	500.21	EOP
J1460	253+70.86	16.00	LT	500.25	EOP
J1461	253+75.00	16.00	LT	500.20	EOP
J1478	252+00.00	39.72	RT	501.05	SW
J1479	252+00.00	31.72	RT	500.97	SW
J1480	252+25.00	39.72	RT	501.02	SW
J1481	252+25.00	31.72	RT	500.94	SW
J1482	252+50.00	39.72	RT	501.16	SW
J1483	252+50.00	31.72	RT	501.08	SW
J1484	252+71.91	39.72	RT	501.03	ENT
J1485	252+71.91	31.72	RT	500.95	ENT
J1486	252+71.91	28.25	RT	500.65	ENT
J1487	252+65.41	11.00	RT	500.66	ENT
J1488	252+86.91	39.72	RT	500.94	ENT
J1489	252+86.91	31.72	RT	500.86	ENT
J1490	252+86.91	28.25	RT	500.63	ENT
J1491	252+93.41	11.00	RT	500.55	ENT
J1492	253+00.00	39.72	RT	500.89	SW
J1493	253+00.00	31.72	RT	500.81	SW
J1494	253+25.00	39.72	RT	500.88	SW
J1495	253+25.00	31.72	RT	500.80	SW
J1496	253+50.00	39.72	RT	500.85	SW
J1497	253+50.00	31.72	RT	500.77	SW
J1498	253+75.00	39.72	RT	500.71	SW
J1499	253+75.00	31.72	RT	500.63	SW

JEFFERSON AVENUE GRADES					
POINT NO.	STATION	OFFSET	SIDE	ELEVATION	LOCATION
J1900	793+38.28	19.40	RT	500.26	BOW
J1901	793+38.28	23.91	RT	500.33	BOW
J1902	793+46.85	19.02	RT	500.30	BOW
J1903	793+48.65	19.02	RT	500.30	BOW
J1904	793+48.65	23.91	RT	500.32	BOW
J1905	793+32.90	19.00	LT	500.25	BOW
J1906	793+32.90	23.91	LT	500.29	BOW
J1907	793+48.65	19.00	LT	500.30	BOW
J1908	793+48.65	23.91	LT	500.31	BOW
J1909	793+38.28	32.37	RT	500.44	SW
J1910	793+48.65	32.37	RT	500.41	SW
J1911	793+32.90	37.63	LT	500.43	SW
J1912	793+48.65	37.63	LT	500.50	SW
J1913	792+20.69	36.23	LT	501.05	SW
J1914	255+19.32	31.10	RT	500.60	SW
J1915	255+30.06	30.91	RT	500.65	SW

JEFFERSON AVENUE AND OAK STREET GRADES					
POINT NO.	STATION	OFFSET	SIDE	ELEVATION	LOCATION
J1900	793+38.28	19.40	RT	500.26	BOW
J1901	793+38.28	23.91	RT	500.33	BOW
J1902	793+46.85	19.02	RT	500.30	BOW
J1903	793+48.65	19.02	RT	500.30	BOW
J1904	793+48.65	23.91	RT	500.32	BOW
J1905	793+32.90	19.00	LT	500.25	BOW
J1906	793+32.90	23.91	LT	500.29	BOW
J1907	793+48.65	19.00	LT	500.30	BOW
J1908	793+48.65	23.91	LT	500.31	BOW
J1909	793+38.28	32.37	RT	500.44	SW
J1910	793+48.65	32.37	RT	500.41	SW
J1911	793+32.90	37.63	LT	500.43	SW
J1912	793+48.65	37.63	LT	500.50	SW
J1913	792+20.69	36.23	LT	501.05	SW
J1914	255+19.32	31.10	RT	500.60	SW
J1915	255+30.06	30.91	RT	500.65	SW