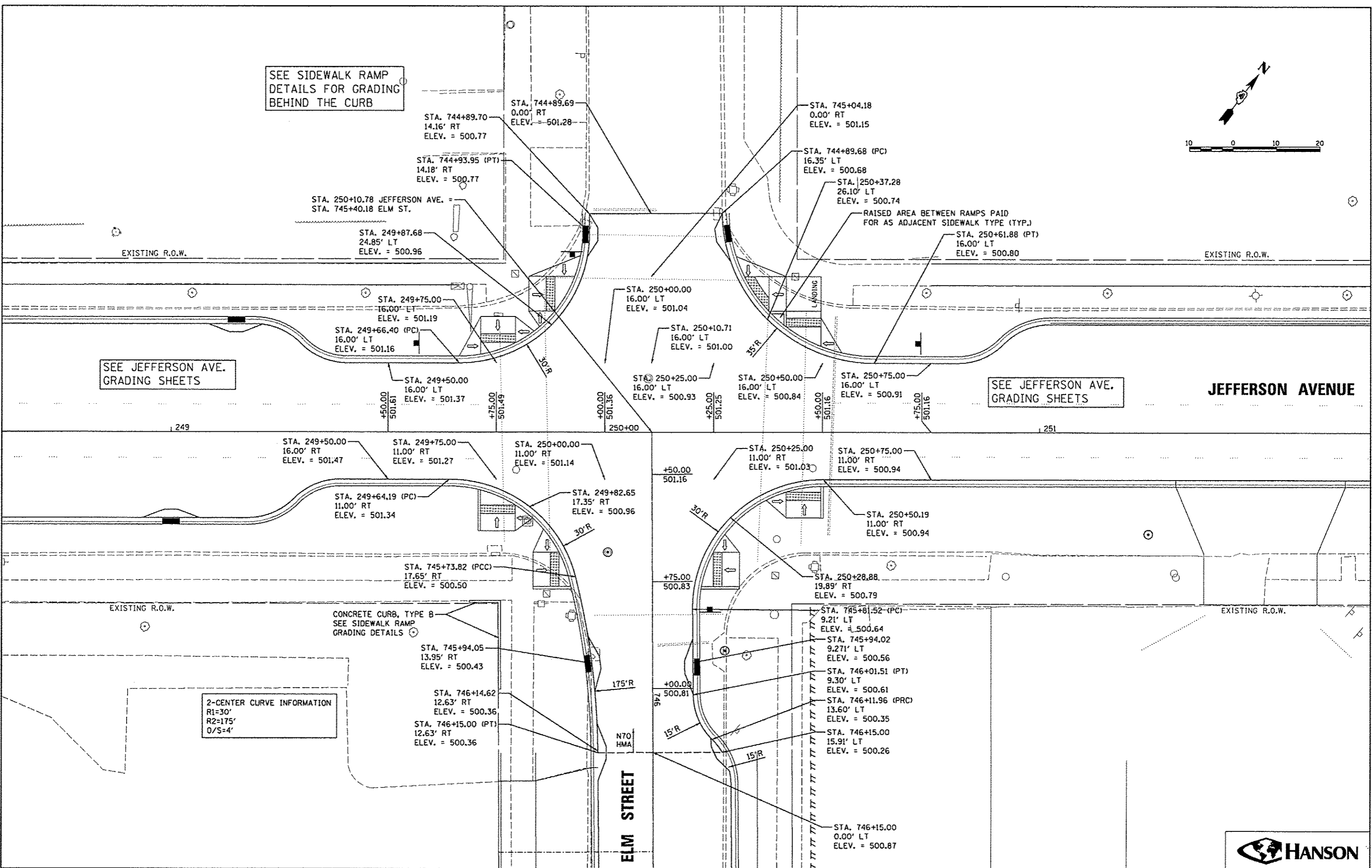
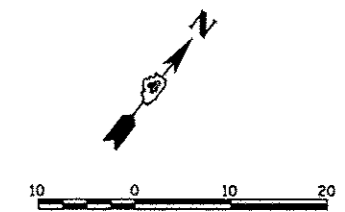


SEE SIDEWALK RAMP
DETAILS FOR GRADING
BEHIND THE CURB



SEE JEFFERSON AVE.
GRADING SHEETS

SEE JEFFERSON AVE.
GRADING SHEETS

2-CENTER CURVE INFORMATION
R1=30'
R2=175'
D/S=4'

STATE OF ILLINOIS
DEPARTMENT OF TRANSPORTATION

JEFFERSON AVENUE AND ELM STREET
INTERSECTION DETAIL



FILE NAME *	USER NAME *	DESIGNED -	REVISED -	SCALE: 1"=20' SHEET NO. OF SHEETS STA. TO STA.	SECTION 12-00356-01-PV	COUNTY PEORIA	TOTAL SHEETS 519	SHEET NO. 116
al\p1155-work\do-not-delete\dms73380\04	monsk01390	DRAWN - RLA	REVISED -					
BL0155-shr-in\tr\spc018.dgn		CHECKED - KNB	REVISED -					
		DATE - 7/18/12	REVISED -					

ILLINOIS FED. AID PROJECT FIG-50931581