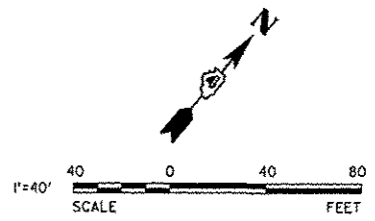
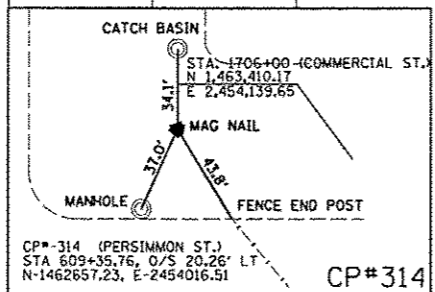
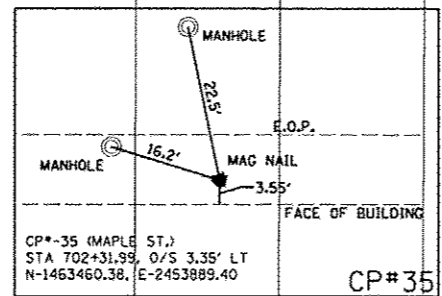
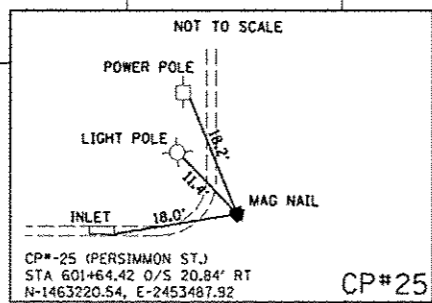


PERSIMMON ST.

MAPLE ST

WASHINGTON ST.

COMMERCIAL ST.



CP# 25

N 1,463,466.481
E 2,453,863.241

45+00

50+00

N 1,463,202.790
E 2,453,530.079

CP# 35

POINT COMMO1

89°57'48"
1700+00

PERSIMMON ST
STA 604+40.07
COMMERCIAL ST
STA 1700+00.38

90°02'12"

1605+00

CP# 314

PROP @ COMMERCIAL ST

1705+00

1710+00

COMMERCIAL PROPOSED @ ALIGNMENT
 =====
 POINT COMMO1 N 1,463,023.052 E 2,453,681.243 STA 1700+00.00
 POINT COMMO3 N 1,463,840.176 E 2,454,648.852 STA 1712+66.47
 POINT COMMO4 N 1,463,866.992 E 2,454,678.561 STA 1713+06.50
 POINT COMMO2 N 1,464,127.251 E 2,454,987.894 STA 1717+10.75
 =====

850 North Main Street, Moline, IL 61550
 309.331.8141 faxco, 309.331.8142
 www.mps-ll.com

MILLENNIA PROFESSIONAL SERVICES

FILE NAME =	USER NAME = dsw000070	DESIGNED - DE	REVISED -
c:\pwise_work\do_no_delete\dm98379\04\BLB155-sh-t-ATB04.dgn		DRAWN - DE	REVISED -
PLOT SCALE = 80.00000 ' / 1"		CHECKED - TVN	REVISED -
PLOT DATE = 07/12/2012		DATE - 7/18/12	REVISED -

**STATE OF ILLINOIS
 DEPARTMENT OF TRANSPORTATION**

**TIGER II - WAREHOUSE DISTRICT
 ALIGNMENT, BENCHMARKS AND TIES**

SCALE: 11"=40' SHEET NO. OF SHEETS STA. TO STA.

F.A.U. RTE.	SECTION	COUNTY	TOTAL SHEETS	SHEET NO.
	12-00356-01-PV	PEORIA	519	43
CONTRACT NO. 89626			ATB04	
ILLINOIS FED. AID PROJECT TIG-8093(158)				