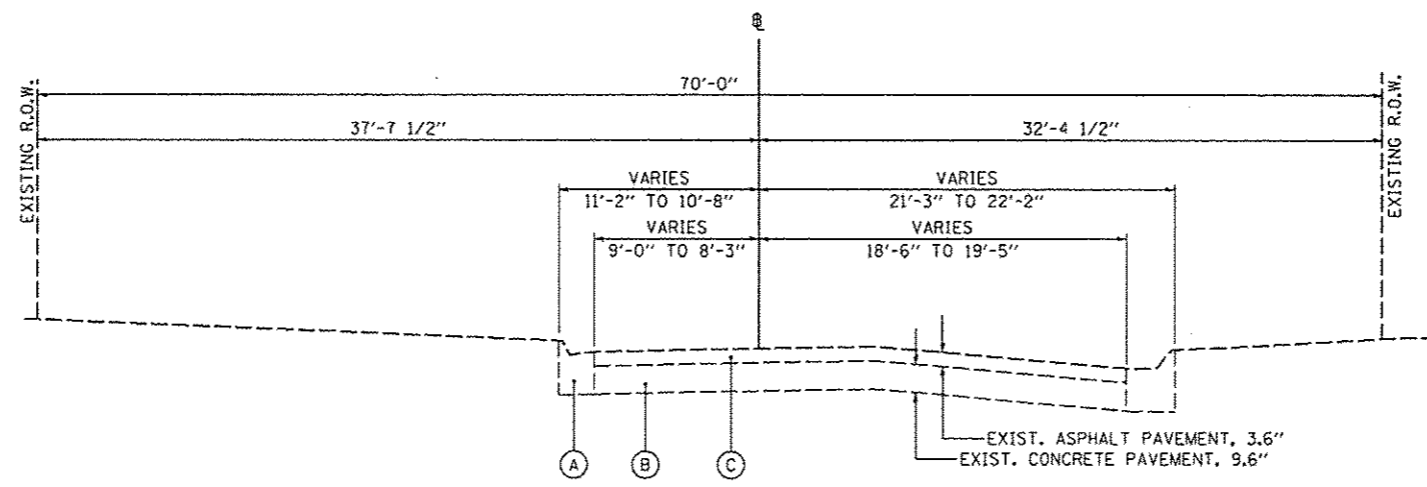


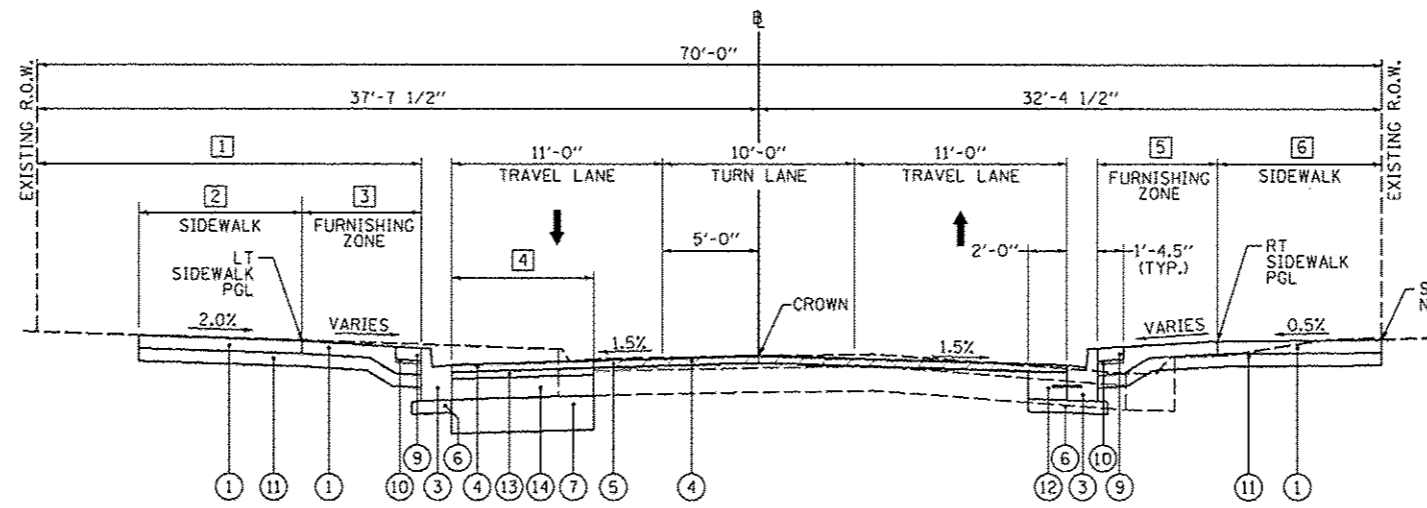
JEFFERSON STREET
INTERSECTION OMISSION
STA. 792+00.00 TO STA. 793+22.54

MAY STREET
INTERSECTION OMISSION
STA. 791+02.33 TO STA. 791+42.36

- NOTES:
- PROPOSED ELEVATION AT B TO MATCH EXISTING PAVEMENT ELEVATION
 - PROPOSED BACK OF SIDEWALK TO MATCH EXISTING ELEVATION



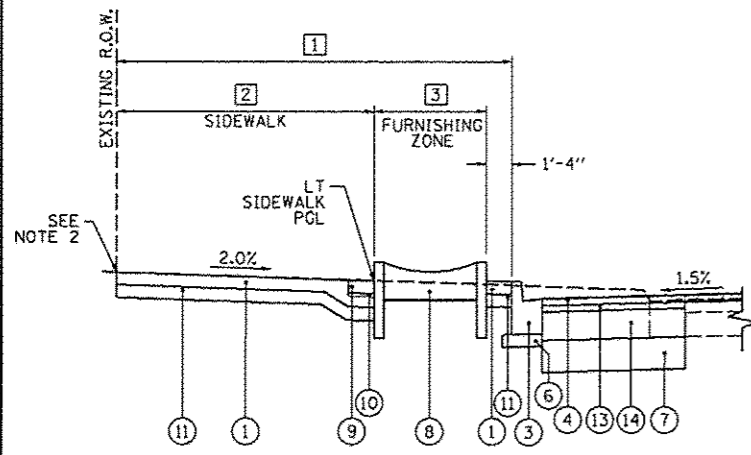
EXISTING OAK STREET
STA. 793+22.54 TO STA. 797+02.33



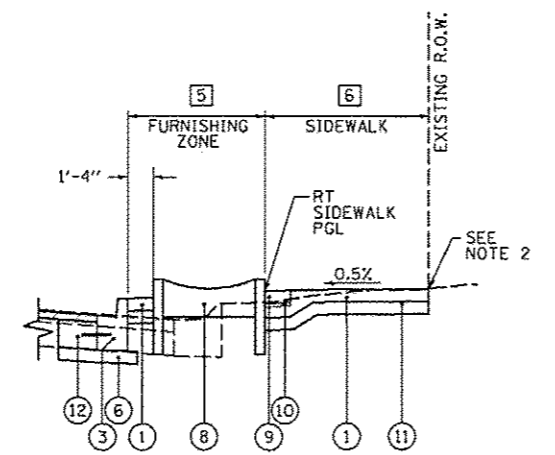
PROPOSED OAK STREET
STA. 793+22.54 TO STA. 797+02.33

- LEGEND
- (A) EXISTING COMBINATION CONCRETE CURB AND GUTTER
 - (B) EXISTING CONCRETE PAVEMENT
 - (C) EXISTING ASPHALT PAVEMENT
 - (1) PROPOSED PORTLAND CEMENT CONCRETE SIDEWALK, 4"
 - (2) PROPOSED TOPSOIL FURNISH AND PLACE, 4" AND SODDING
 - (3) PROPOSED COMBINATION CONCRETE CURB AND GUTTER, TYPE B-6.12
 - (4) PROPOSED POLYMERIZED HOT-MIX ASPHALT, SURFACE COURSE, MIX "E", N50, 2 1/4" DEPTH
 - (5) PROPOSED HOT-MIX ASPHALT SURFACE REMOVAL, VARIABLE DEPTH
 - (6) PROPOSED SUBBASE GRANULAR MATERIAL, TYPE A, 4"
 - (7) PROPOSED AGGREGATE BASE COURSE, TYPE A, 12"
 - (8) PROPOSED PLANTER BOX
 - (9) PROPOSED CONCRETE PAVERS
 - (10) PROPOSED CONCRETE PAVER SAND BEDDING, 1"
 - (11) PROPOSED SUBGRADE GRANULAR MATERIAL, TYPE B, 4"
 - (12) PROPOSED CLASS B PATCH, TYPE IV, 10"
 - (13) PROPOSED POLYMERIZED HOT-MIX ASPHALT BINDER COURSE, IL-19, N50, 2 3/4" DEPTH
 - (14) PROPOSED HOT-MIX ASPHALT BASE COURSE, 8"

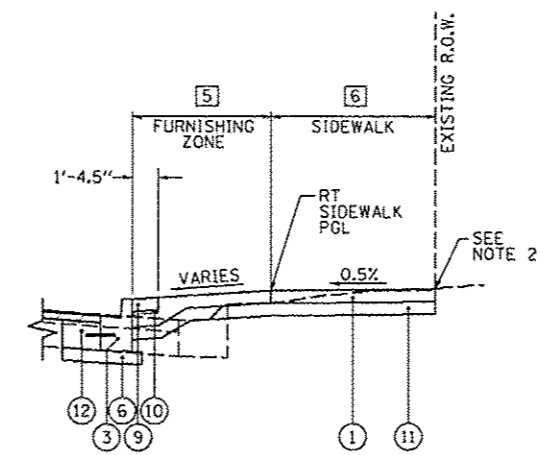
- 1 BACK OF CURB TO EXISTING R.O.W. WIDTH - LEFT
STA. 793+22.54 TO STA. 796+60.00 - 20'-0"
STA. 796+60.00 TO STA. 797+02.33 - TRANSITIONS FROM 20'-0" TO 15'-5"
- 2 SIDEWALK WIDTH - LEFT
STA. 793+22.54 TO STA. 794+25.89 - 13'-8"
STA. 794+25.89 TO STA. 794+35.59 - TRANSITIONS FROM 13'-8" TO 9'-6"
STA. 794+35.59 TO STA. 795+18.69 - TRANSITIONS FROM 9'-6" TO 6'-2"
STA. 794+35.59 TO STA. 795+18.69 - 6'-2"
STA. 795+18.69 - TRANSITIONS FROM 6'-2" TO 7'-8"
STA. 795+18.69 TO STA. 795+38.52 - 7'-8"
STA. 795+38.52 - TRANSITIONS FROM 7'-8" TO 6'-4 1/2"
STA. 795+39.52 TO STA. 795+57.03 - 6'-4 1/2"
STA. 795+57.03 - TRANSITIONS FROM 6'-4 1/2" TO 13'-8"
STA. 795+57.03 TO STA. 796+59.15 - 13'-8"
STA. 796+59.15 - TRANSITIONS FROM 13'-8" TO 20'-0"
STA. 796+59.15 TO STA. 797+02.33 - TRANSITIONS FROM 20'-0" TO 15'-5"
- 3 FURNISHING ZONE WIDTH - LEFT
STA. 793+22.54 TO STA. 794+25.89 - 6'-4"
STA. 794+25.89 TO STA. 794+35.59 - TRANSITIONS FROM 6'-4" TO 10'-6"
STA. 794+35.59 - TRANSITIONS FROM 10'-6" TO 0'-0"
STA. 794+35.59 TO STA. 795+38.52 - 0'-0"
STA. 795+38.52 - TRANSITIONS FROM 0'-0" TO 13'-7 1/2"
STA. 795+38.52 TO STA. 795+57.03 - 13'-7 1/2"
STA. 795+57.03 - TRANSITIONS FROM 13'-7 1/2" TO 6'-4"
STA. 795+57.03 TO STA. 796+59.15 - 6'-4"
STA. 796+59.15 - TRANSITIONS FROM 6'-4" TO 0'-0"
STA. 796+59.15 TO STA. 797+02.33 - 0'-0"
- 4 PAVEMENT WIDENING WIDTH - LEFT
STA. 793+22.54 TO STA. 796+76.43 - TRANSITIONS FROM 7'-6" TO 8'-0"
STA. 796+76.43 TO STA. 797+02.33 - TRANSITIONS FROM 8'-0" TO 2'-11"
- 5 FURNISHING ZONE WIDTH - RIGHT
STA. 793+22.54 TO STA. 796+46.86 - TRANSITIONS FROM 3'-3" TO 6'-4"
STA. 793+46.86 TO STA. 794+91.04 - 6'-4"
STA. 793+91.04 TO STA. 795+04.50 - TRANSITIONS FROM 6'-4" TO 0'-0"
STA. 795+22.84 TO STA. 795+36.25 - TRANSITIONS FROM 0'-0" TO 6'-4"
STA. 795+36.25 TO STA. 796+96.36 - 6'-4"
STA. 796+96.36 TO STA. 797+02.33 - TRANSITIONS FROM 6'-4" TO 5'-8"
- 6 SIDEWALK WIDTH - RIGHT
STA. 793+22.54 TO STA. 795+04.50 - 8'-5 1/2"
STA. 795+04.50 TO STA. 795+22.85 - 0'-0"
STA. 795+22.85 TO STA. 797+02.33 - 8'-5 1/2"



DETAIL A
PROPOSED SECTION WITH PLANTER BOX



DETAIL B
PROPOSED SECTION WITH PLANTER BOX



DETAIL C
ALTERNATE PROPOSED SECTION WITHOUT PLANTER BOX

FILE NAME: o:\p\ee\work\do_not_delete\dm32328\04...	USER NAME: morsk01390	DESIGNED: RMM/EMM	REVISED: -	STATE OF ILLINOIS DEPARTMENT OF TRANSPORTATION	OAK STREET PROPOSED TYPICAL SECTIONS			F.A.U. RTE.	SECTION	COUNTY	TOTAL SHEETS	SHEET NO.
	DRAWN: RJE	CHECKED: EJM	REVISED: -		SCALE: N/A	SHEET NO. OF SHEETS	STA. TO STA.	12-00356-01-PV	PEORIA	519	18	
	DATE: 7/18/12							CONTRACT NO. 89626		ILLINOIS FED. AID PROJECT TIG-509345B		

