

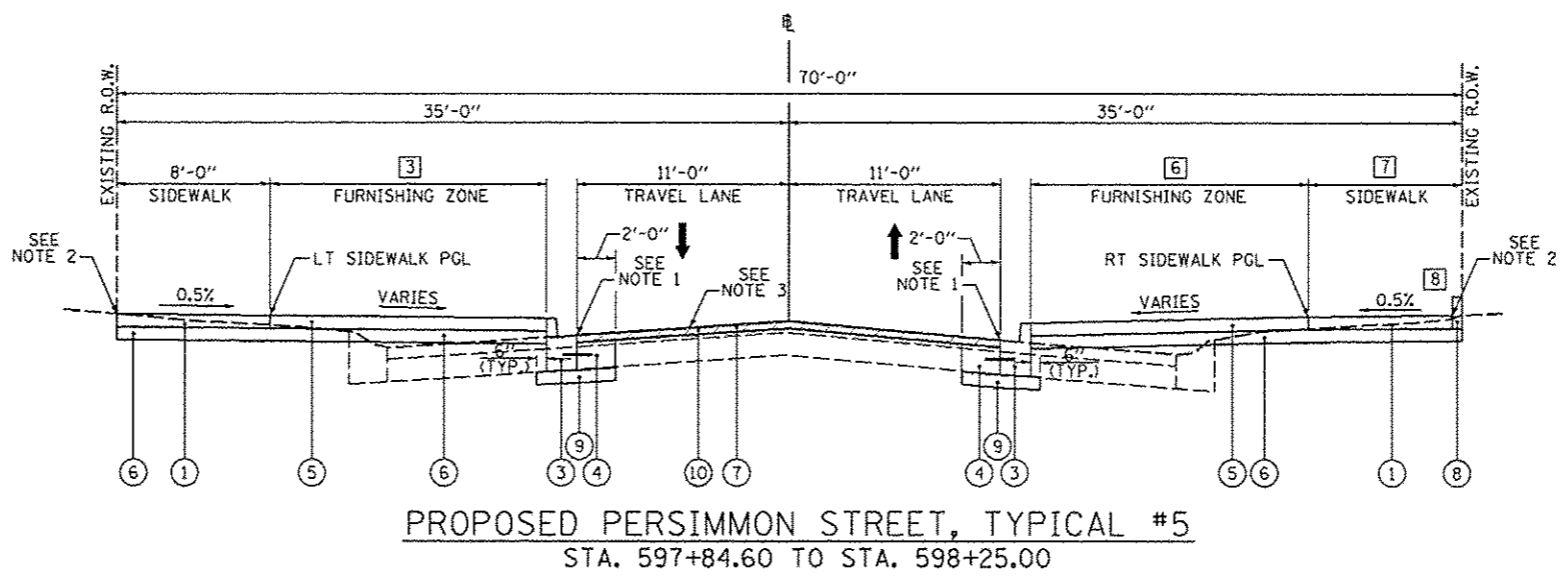
JEFFERSON AVENUE
INTERSECTION OMISSION
STA. 591+87.02 TO STA. 593+24.62

MEYER AVENUE
INTERSECTION OMISSION
STA. 595+08.05 TO STA. 595+20.61

ADAMS STREET
INTERSECTION OMISSION
STA. 597+04.49 TO STA. 597+84.60

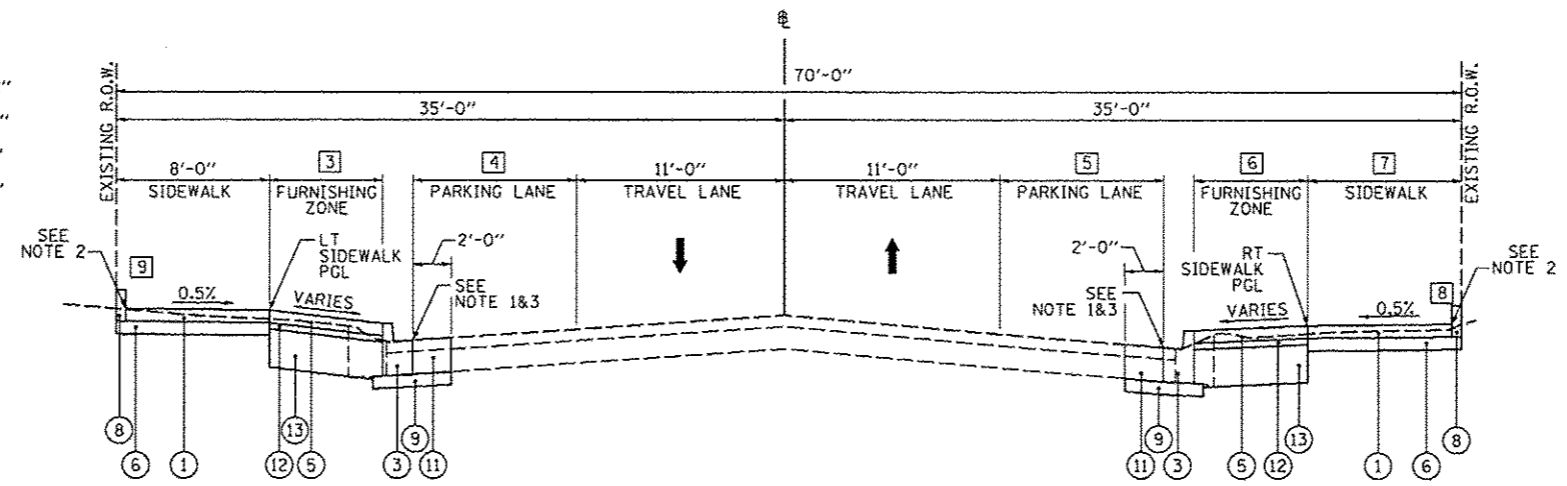
- LEGEND**
- (A) EXISTING COMBINED CONCRETE CURB AND GUTTER
 - (B) EXISTING CONCRETE PAVEMENT
 - (C) EXISTING ASPHALT PAVEMENT
 - (1) PROPOSED PORTLAND CEMENT CONCRETE SIDEWALK, 4"
 - (2) PROPOSED TOPSOIL FURNISH AND PLACE, 4" AND SODDING
 - (3) PROPOSED COMBINATION CONCRETE CURB AND GUTTER, TYPE B-6.12
 - (4) PROPOSED CLASS B PATCH, TYPE IV, 10"
 - (5) PROPOSED POROUS PCC SIDEWALK, 4", SPECIAL
 - (6) PROPOSED SUBBASE GRANULAR MATERIAL, TYPE B, 4"
 - (7) PROPOSED HOT-MIX SURFACE REMOVAL, VARIABLE DEPTH
 - (8) PROPOSED CONCRETE CURB, TYPE B
 - (9) PROPOSED SUBBASE GRANULAR MATERIAL, TYPE A, 4"
 - (10) PROPOSED POLYMERIZED HOT-MIX ASPHALT SURFACE COURSE, MIX "E", N50, 2 1/4" DEPTH
 - (11) PROPOSED CLASS B PATCH, TYPE IV, 12"
 - (12) PROPOSED SUBBASE GRANULAR MATERIAL, TYPE A, 2"
 - (13) PROPOSED AGGREGATE BASE COURSE, TYPE A, 12"

- NOTES:**
1. PROPOSED EDGE OF PAVEMENT TO MATCH EXISTING PAVEMENT ELEVATION
 2. PROPOSED BACK OF SIDEWALK TO MATCH EXISTING AT R.O.W., EXCEPT:
STA. 597+84.55 TO STA. 597+94.55, RT
- TRANSITIONS FROM ELEV. 501.34 TO 501.44
STA. 597+94.55 TO STA. 599+00.00, RT
- TRANSITIONS FROM ELEV. 501.44 TO 494.80
STA. 599+04.33 TO STA. 599+25.92
- TRANSITIONS FROM ELEV. 495.04 TO 493.77
STA. 599+44.55 TO STA. 599+64.25
- TRANSITIONS FROM ELEV. 492.89 TO 491.81
 3. MATCH EXISTING PAVEMENT CROSS SLOPE

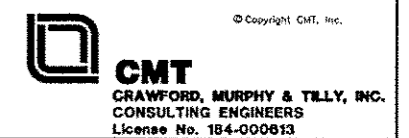


PROPOSED PERSIMMON STREET, TYPICAL #5
STA. 597+84.60 TO STA. 598+25.00

- 1 EXISTING R.O.W. WIDTH
STA. 593+24.62 TO STA. 595+05.78 - 68'-6"
STA. 595+23.84 TO STA. 606+25.00 - 70'-0"
- 2 EXISTING R.O.W. TO B WIDTH
STA. 593+24.62 TO STA. 595+05.78 - 34'-3"
STA. 595+23.84 TO STA. 606+25.00 - 35'-0"
- 3 FURNISHING ZONE WIDTH - LEFT
STA. 597+84.60 TO STA. 598+05.55 - TRANSITIONS FROM 7'-9" TO 13'-10 1/2"
STA. 598+05.55 TO STA. 598+25.55 - 13'-10 1/2"
STA. 598+25.55 TO STA. 598+46.48 - TRANSITIONS FROM 13'-10 1/2" TO 5'-4"
STA. 598+46.48 TO STA. 599+09.48 - 5'-4"
STA. 599+09.48 TO STA. 599+30.40 - TRANSITIONS FROM 5'-4" TO 13'-8 1/2"
STA. 599+30.40 TO STA. 599+49.25 - 13'-8 1/2"
STA. 599+49.25 TO STA. 599+62.60 - TRANSITIONS FROM 13'-8 1/2" TO 0'-0"
- 4 PARKING LANE WIDTH - LEFT
STA. 597+84.60 TO STA. 598+25.55 - 0'-0"
STA. 598+25.55 TO STA. 598+46.48 - TRANSITIONS FROM 0'-0" TO 8'-6"
STA. 598+46.48 TO STA. 599+09.48 - 8'-6"
STA. 599+09.48 TO STA. 599+30.40 - TRANSITIONS FROM 8'-6" TO 0'-0"
STA. 599+30.40 TO STA. 599+74.71 - 0'-0"
- 5 PARKING LANE WIDTH - RIGHT
STA. 597+84.60 TO STA. 598+34.93 - 0'-0"
STA. 598+34.93 TO STA. 598+55.85 - TRANSITIONS FROM 0'-0" TO 8'-6"
STA. 598+55.85 TO STA. 598+98.85 - 8'-6"
STA. 598+98.85 TO STA. 599+19.77 - TRANSITIONS FROM 8'-6" TO 0'-0"
STA. 599+19.77 TO STA. 599+74.71 - 0'-0"
- 6 FURNISHING ZONE WIDTH - RIGHT
STA. 597+84.60 TO STA. 598+14.93 - TRANSITIONS FROM 9'-4" TO 15'-9"
STA. 598+14.93 TO STA. 598+34.93 - TRANSITIONS FROM 15'-9" TO 14'-2"
STA. 598+34.93 TO STA. 598+55.85 - TRANSITIONS FROM 14'-2" TO 5'-8"
STA. 598+55.85 TO STA. 598+98.85 - 5'-8"
STA. 598+98.85 TO STA. 599+19.77 - TRANSITIONS FROM 5'-8" TO 14'-2"
STA. 599+19.77 TO STA. 599+59.72 - 14'-2"
STA. 599+59.72 TO STA. 599+73.13 - TRANSITIONS FROM 14'-2" TO 0'-0"
- 7 SIDEWALK WIDTH - RIGHT
STA. 597+84.60 TO STA. 599+66.03 - TRANSITIONS FROM 8'-0" TO 7'-10"
- 8 CONCRETE CURB LOCATIONS
STA. 597+84.60 TO STA. 599+00.00, RT
- 9 CONCRETE CURB LOCATIONS
STA. 599+53.00 TO STA. 599+62.60, LT



PROPOSED PERSIMMON STREET, TYPICAL #6
STA. 598+25.00 TO STA. 599+74.71



FILE NAME * o:\pwise_vor\k\do_not_delete\dm73328\04	USER NAME * manak01398	DESIGNED - RMM/EMM	REVISED -	STATE OF ILLINOIS DEPARTMENT OF TRANSPORTATION	PERSIMMON STREET PROPOSED TYPICAL SECTIONS			F.A.U. RTE.	SECTION 12-00356-01-PV	COUNTY PEORIA	TOTAL SHEETS 519	SHEET NO. 15
	PLOT SCALE * 1/8" = 10'-0"	CHECKED - EJH	REVISED -		SCALE: N/A	SHEET NO. OF SHEETS	STA. TO STA.	ILLINOIS FED. AID PROJECT TIG-5093(58)				
	PLOT DATE * 07/23/2012	DATE - 7/18/12	REVISED -									
CONTRACT NO. 89626												