

JEFFERSON AVENUE
INTERSECTION OMISSION
STA. 591+87.02 TO STA. 593+24.62

MEYER AVENUE
INTERSECTION OMISSION
STA. 595+08.05 TO STA. 595+20.61

ADAMS STREET
INTERSECTION OMISSION
STA. 597+04.49 TO STA. 597+84.60

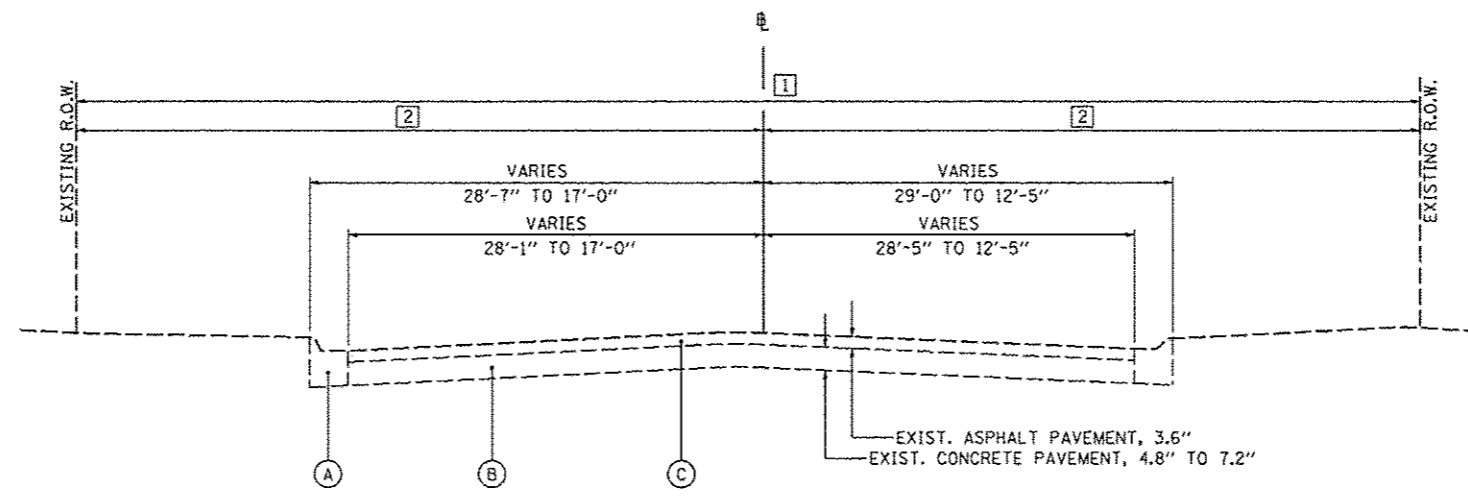
WASHINGTON STREET
INTERSECTION OMISSION
STA. 599+74.41 TO STA. 603+00.00

NOTES:

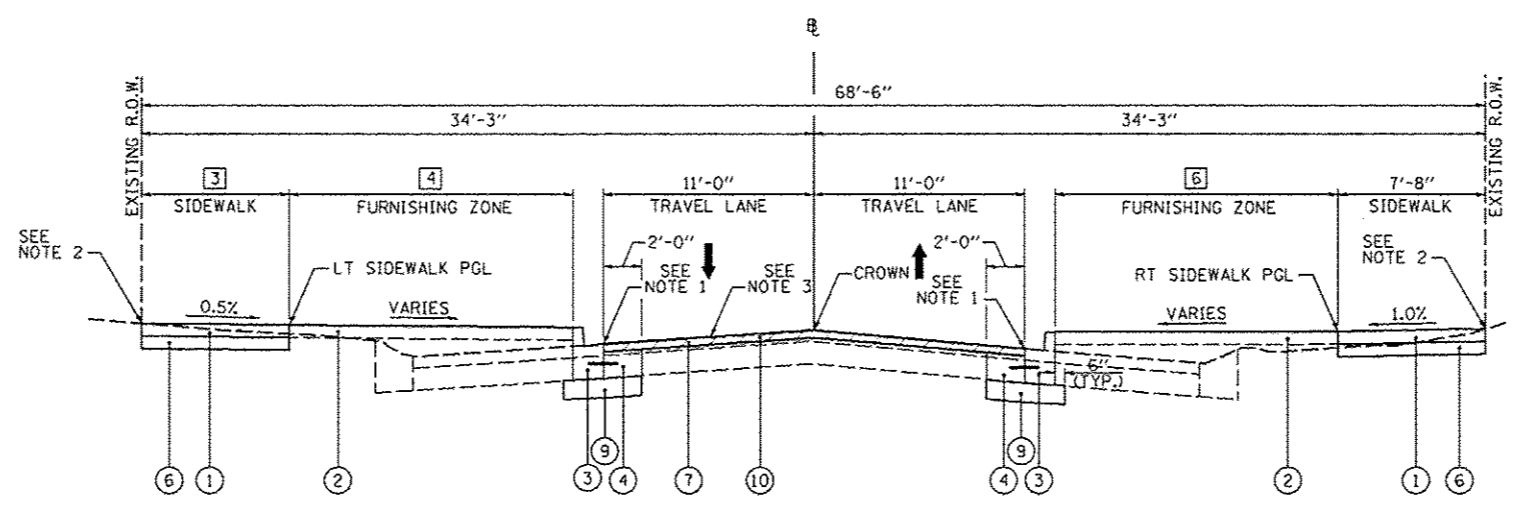
1. PROPOSED EDGE OF CURB TO MATCH EXISTING PAVEMENT ELEVATION
2. PROPOSED BACK OF SIDEWALK TO MATCH EXISTING ELEVATION AT R.O.W., EXCEPT:
STA. 594+65.53 TO STA. 594+92.00, LT - TRANSITIONS FROM ELEV. 502.55 TO 502.80
STA. 594+92.00 TO STA. 595+06.73, LT - TRANSITIONS FROM ELEV. 502.80 TO 502.50
3. MATCH EXISTING PAVEMENT CROSS SLOPE

LEGEND

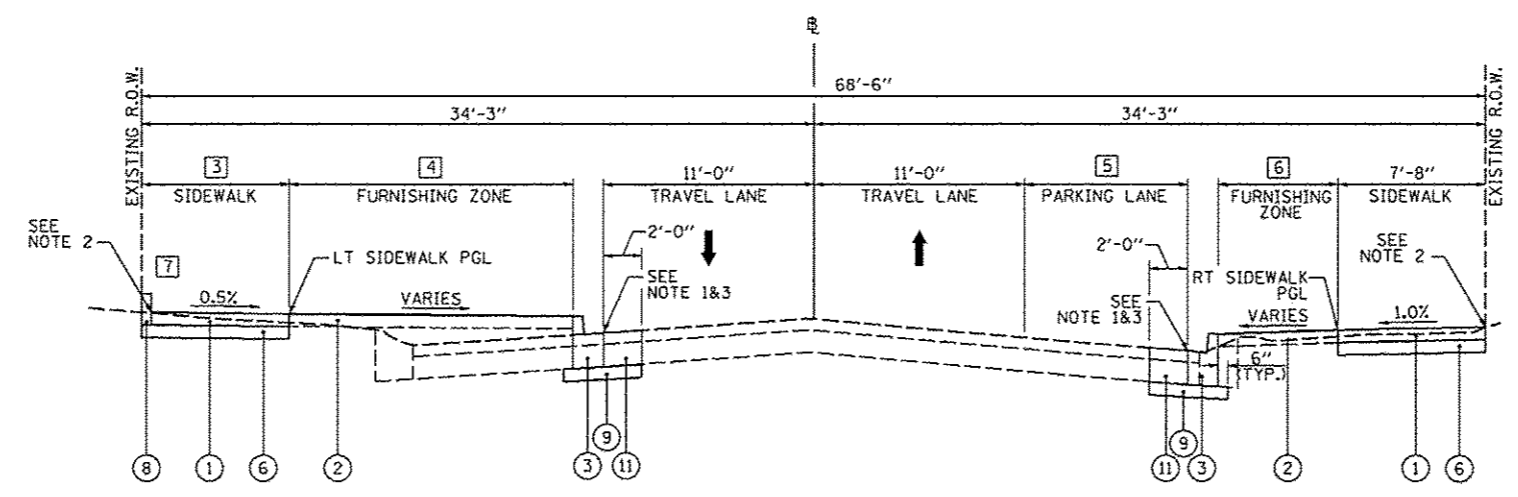
- (A) EXISTING COMBINED CONCRETE CURB AND GUTTER
- (B) EXISTING CONCRETE PAVEMENT
- (C) EXISTING ASPHALT PAVEMENT
- (1) PROPOSED PORTLAND CEMENT CONCRETE SIDEWALK, 4"
- (2) PROPOSED TOPSOIL FURNISH AND PLACE, 4" AND SODDING
- (3) PROPOSED COMBINATION CONCRETE CURB AND GUTTER, TYPE B-6.12
- (4) PROPOSED CLASS B PATCH, TYPE IV, 10"
- (5) PROPOSED POROUS PCC SIDEWALK, 4", SPECIAL
- (6) PROPOSED SUBBASE GRANULAR MATERIAL, TYPE B, 4"
- (7) PROPOSED HOT-MIX ASPHALT SURFACE REMOVAL, VARIABLE DEPTH
- (8) PROPOSED CONCRETE CURB, TYPE B
- (9) PROPOSED SUBBASE GRANULAR MATERIAL, TYPE A, 4"
- (10) PROPOSED POLYMERIZED HOT-MIX ASPHALT SURFACE COURSE, MIX "E", N50, 2 1/4" DEPTH
- (11) PROPOSED CLASS B PATCH, TYPE IV, 12"



EXISTING PERSIMMON STREET
STA. 593+24.62 TO STA. 606+25.00

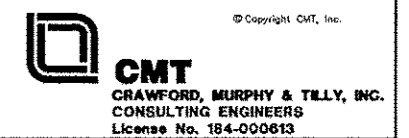


PROPOSED PERSIMMON STREET, TYPICAL #1
STA. 593+24.62 TO STA. 593+60.00



PROPOSED PERSIMMON STREET, TYPICAL #2
STA. 593+60.00 TO STA. 595+08.05

- [1] EXISTING R.O.W. WIDTH
STA. 593+24.62 TO STA. 595+05.78 - 68'-6"
STA. 595+23.84 TO STA. 606+25.00 - 70'-0"
- [2] EXISTING R.O.W. TO \emptyset WIDTH
STA. 593+24.62 TO STA. 595+05.78 - 34'-3"
STA. 595+23.84 TO STA. 606+25.00 - 35'-0"
- [3] SIDEWALK WIDTH - LEFT
STA. 593+24.62 TO STA. 594+65.54 - 7'-8"
STA. 594+65.54 - TRANSITIONS FROM 7'-8" TO 7'-0"
STA. 594+65.54 TO STA. 595+06.73 - 7'-0"
- [4] FURNISHING ZONE WIDTH - LEFT
STA. 593+24.62 TO STA. 593+29.82 - TRANSITIONS FROM 13'-6" TO 14'-0"
STA. 593+29.82 TO STA. 594+65.54 - 14'-0"
STA. 594+93.28 TO STA. 595+06.73 - TRANSITIONS FROM 14'-0" TO 0'-0"
- [5] PARKING LANE WIDTH - RIGHT
STA. 593+24.62 TO STA. 593+50.23 - 0'-0"
STA. 593+50.23 TO STA. 593+71.14 - TRANSITIONS FROM 0'-0" TO 8'-6"
STA. 593+71.14 TO STA. 594+57.14 - 8'-6"
STA. 594+57.14 TO STA. 594+78.06 - TRANSITIONS FROM 8'-6" TO 0'-0"
STA. 594+78.06 TO STA. 595+08.05 - 0'-0"
- [6] FURNISHING ZONE WIDTH - RIGHT
STA. 593+24.62 TO STA. 593+30.23 - TRANSITIONS FROM 10'-11" TO 11'-6"
STA. 593+30.23 TO STA. 593+50.23 - 11'-6"
STA. 593+50.23 TO STA. 593+71.14 - TRANSITIONS FROM 11'-6" TO 5'-6"
STA. 595+71.14 TO STA. 594+57.14 - 5'-6"
STA. 594+57.14 TO STA. 594+93.09 - TRANSITIONS FROM 5'-6" TO 14'-0"
STA. 594+78.06 TO STA. 594+93.09 - 14'-0"
STA. 594+93.09 TO STA. 595+06.48 - TRANSITIONS FROM 14'-0" TO 0'-0"
- [7] CONCRETE CURB LOCATION
STA. 594+65.53 TO STA. 595+06.73, LT



FILE NAME *	USER NAME * manak01398	DESIGNED - RMM/EMM	REVISED -	STATE OF ILLINOIS DEPARTMENT OF TRANSPORTATION	PERSIMMON STREET PROPOSED TYPICAL SECTIONS			F.A.U. R.T.E.	SECTION	COUNTY	TOTAL SHEETS	SHEET NO.
on\pwise\work\do_not_delete\dms73328\04	02.0155-shr-typrical-281.dgn	DRAWN - RJE	REVISED -		SCALE: N/A	SHEET NO. OF SHEETS	STA. TO STA.	12-00356-01-PV	PEORIA	519	13	
	PLOT SCALE * 1/8"=1'-0"	CHECKED - EJM	REVISED -					CONTRACT NO. 89626		ILLINOIS FED. AID PROJECT TIC-5093(458)		
	PLOT DATE * 07/23/2012	DATE - 7/18/12	REVISED -									