

ROUTE MARKERS

FOR U.S. ROUTES
M1-40-2424

FOR ILLINOIS ROUTES
M1-50-2424

R.R. UNMARKED ROUTES
SPECIAL 24" x 18" VARIABLE
4" BLACK LETTERS ON WHITE
REFLECTIVE BACKGROUND

ARROWS SIGNS

M5-1L-2115

M5-1R-2115

M6-1-2115

M6-3-2115

CARDINAL DIRECTION & DETOUR SIGNS

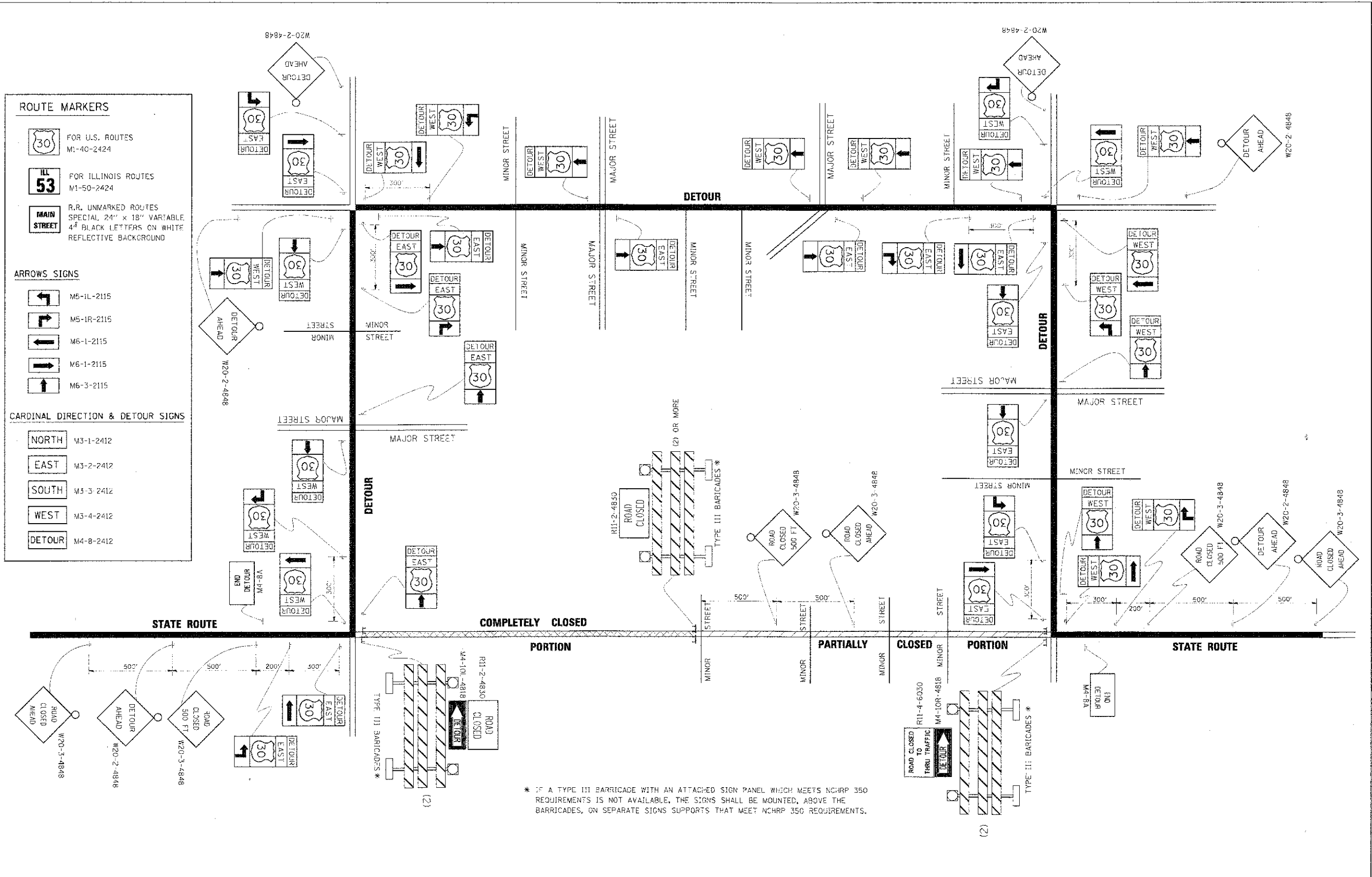
NORTH M3-1-2412

EAST M3-2-2412

SOUTH M3-3-2412

WEST M3-4-2412

DETOUR M4-8-2412



* IF A TYPE III BARRICADE WITH AN ATTACHED SIGN PANEL WHICH MEETS NCHRP 350 REQUIREMENTS IS NOT AVAILABLE, THE SIGNS SHALL BE MOUNTED, ABOVE THE BARRICADES, ON SEPARATE SIGNS SUPPORTS THAT MEET NCHRP 350 REQUIREMENTS.

FILE NAME	USER NAME	DESIGNED	REVISED	STATE OF ILLINOIS DEPARTMENT OF TRANSPORTATION		DETOUR SIGNING FOR CLOSING STATE HIGHWAYS		F.A.P. RTE.	SECTION	COUNTY	TOTAL SHEETS	SHEET NO.
DESIGNER	DATE	DATE	DATE	SCALE: NONE		SHEET NO. 1 OF 1 SHEETS STA. TO STA.		TC-21				
CONTRACT NO.	CONTRACT NO. 83735											

FILE NAME	USER NAME	DESIGNED	REVISED	STATE OF ILLINOIS DEPARTMENT OF TRANSPORTATION		IL RTE 58 (GOLF ROAD) AND NEW WILKE ROAD IMPROVEMENTS DETOUR SIGNING FOR CLOSING STATE HIGHWAYS (DIST 1 STD TC-21) IL RTE 58 (GOLF ROAD)		F.A.P. RTE.	SECTION	COUNTY	TOTAL SHEETS	SHEET NO.
DESIGNER	DATE	DATE	DATE	SCALE: N.T.S.		SHEET NO. 4 OF 6 SHEETS STA. TO STA.		0559	00-00078-00-CH	COOK	116	97
CONTRACT NO.	CONTRACT NO. 83735											