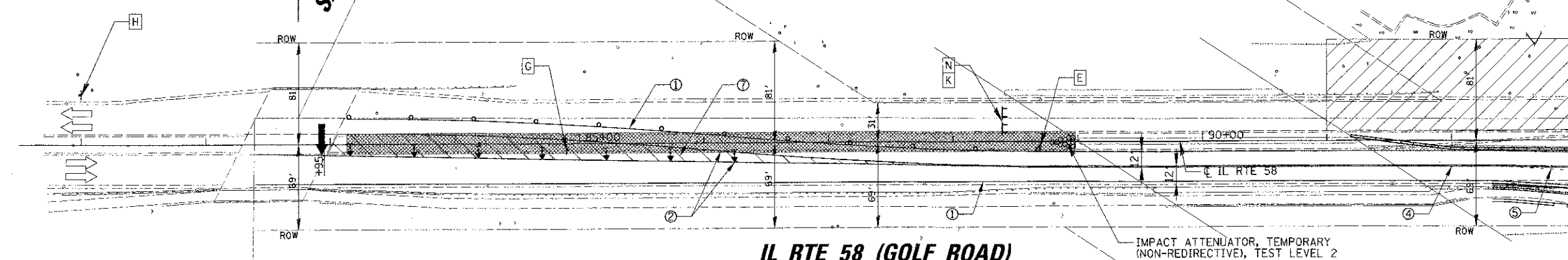
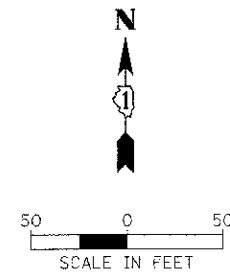


JANE ADDAMS
MEMORIAL TOLLWAY
I-90

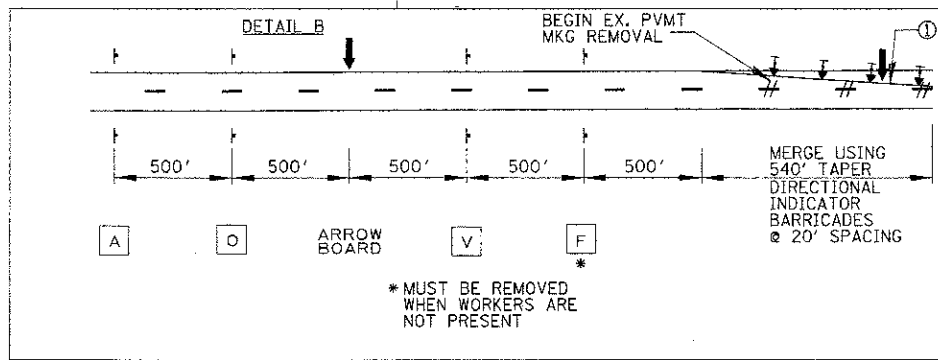
SALT CREEK

SEE DETAIL B FOR
ADVANCED SIGNING

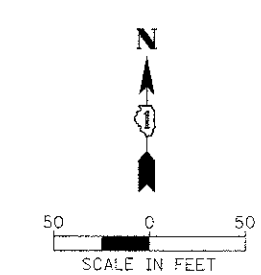


IL RTE 58 (GOLF ROAD)

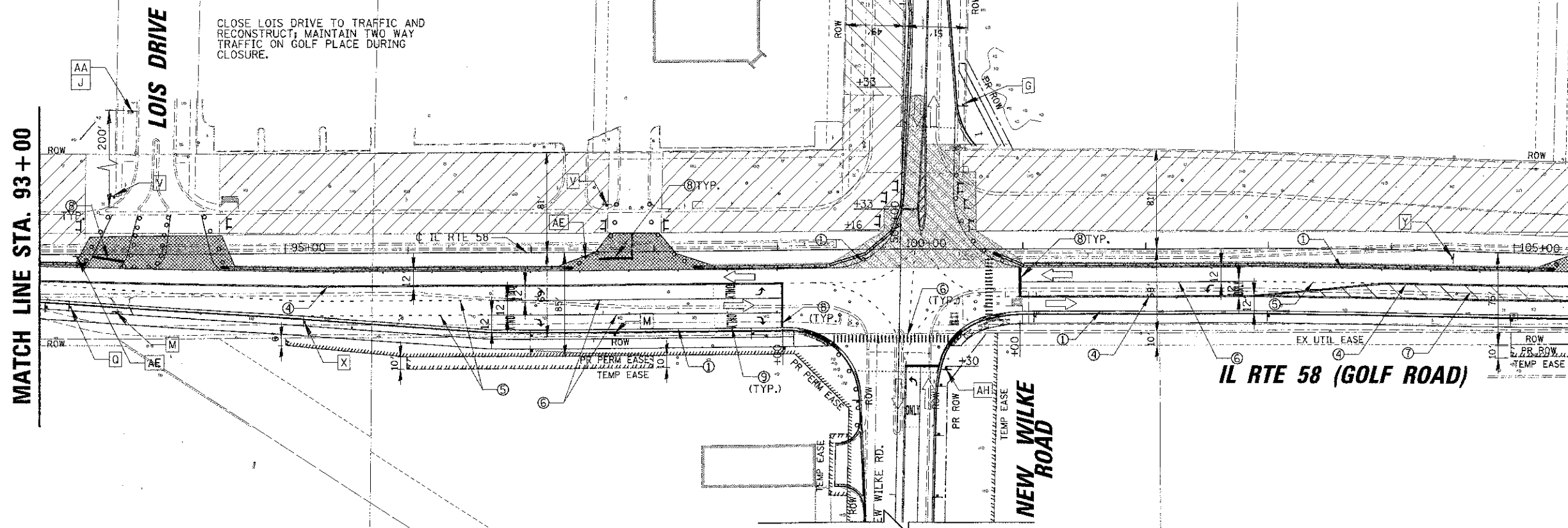
IMPACT ATTENUATOR, TEMPORARY
(NON-REDIRECTIVE), TEST LEVEL 2



- LEGEND:** SEE MOT SIGN LEGEND, SHEET 35.
- ① TEMPORARY PAVEMENT MARKING - LINE 4" (WHITE) *
 - ② TEMPORARY PAVEMENT MARKING - LINE 4" (YELLOW) *
 - ③ TEMPORARY PAVEMENT MARKING - LINE 4" (WHITE SKIP-DASH 30'-10') *
 - ④ TEMPORARY PAVEMENT MARKING - LINE 4" (DOUBLE YELLOW @ 11" C-C) *
 - ⑤ TEMPORARY PAVEMENT MARKING - LINE 6" (WHITE SKIP-DASH 6'-2') *
 - ⑥ TEMPORARY PAVEMENT MARKING - LINE 6" (WHITE) *
 - ⑦ TEMPORARY PAVEMENT MARKING - LINE 12" (YELLOW DIAGONALS @ 20' C-C)
 - ⑧ TEMPORARY PAVEMENT MARKING - LINE 24" (WHITE)
 - ⑨ TEMPORARY PAVEMENT MARKING - LETTERS AND SYMBOLS (WHITE)
 - ⑩ TEMPORARY PAVEMENT MARKING - LINE 6" (WHITE SKIP-DASH 9'-3') *
- * WITH TEMP RAIS REF PVT MKR



CLOSE LOIS DRIVE TO TRAFFIC AND
RECONSTRUCT; MAINTAIN TWO WAY
TRAFFIC ON GOLF PLACE DURING
CLOSURE.



IL RTE 58 (GOLF ROAD)

NEW WILKE ROAD

NOTE:
SUB-STAGES WILL BE NEEDED TO MAINTAIN
TRAFFIC PER SUGGESTED MAINTENANCE OF
TRAFFIC NOTES AND AS DIRECTED BY
ENGINEER. THIS WORK MAY INCLUDE
ADDITIONAL TEMPORARY PAVEMENT,
TEMPORARY TURN LANE CLOSURES
(INTO CLOSED DRIVES), TEMPORARY
TRAFFIC SIGNAL HEAD ADJUSTMENTS,
TEMP BAR WALL, TEMPORARY PAVEMENT
MARKINGS, BARRICADES AND SIGNING.

- LEGEND:**
- [Hatched Box] WORK ZONE
 - [Dotted Box] TEMPORARY PAVEMENT
 - [Circle with Burn Light] DRUM W/STEADY BURN LIGHT
 - [Circle with Mono-Dir Light] BI-DIRECTIONAL (MONO-DIR. STG IID)
 - [Double Panel] DOUBLE VERTICAL PANEL W/STEADY BURN BI-DIRECTIONAL LIGHT
 - [Arrow] IMPACT ATTENUATOR, TEMPORARY (NON-REDIRECTIVE) TEST LEVEL 2
 - [Barrier Wall] TEMPORARY BARRIER WALL
 - [Barricade] TYPE II DIRECTIONAL BARRICADE W/STEADY BURN MONO-DIR LIGHT
 - [Barricade] TYPE III BARRICADE W/TWO FLASHING LIGHTS
 - [Sign] WORK ZONE SIGN
 - [Arrow] TRAFFIC FLOW
 - [Arrow Board] ARROW BOARD
 - [Close Sidewalk] CLOSE SIDEWALK USING STD. 701801
 - [XX] MUST BE REMOVED WHEN WORKERS ARE NOT PRESENT

FILE NAME: W052404516_0000230-01072_53350623-002301	USER NAME: mwardner	DESIGNED: BLL	REVISED: -	STATE OF ILLINOIS DEPARTMENT OF TRANSPORTATION	IL RTE 58 (GOLF ROAD) AND NEW WILKE ROAD IMPROVEMENTS SUGGESTED MAINTENANCE OF TRAFFIC - STAGE II IL RTE 58 (GOLF ROAD)		F.A.P. RTE: 0559	SECTION: 00-00078-00-CH	COUNTY: COOK	TOTAL SHEETS: 116	SHEET NO.: 41	
PLOT SCALE: 50'	P.L.T. DATE: 3/4/2012	DRAWN: PVM	REVISED: -		SCALE: 50'	SHEET NO. 4 OF 6 SHEETS	STA. 83+49.63 TO STA. 105+50	CONTRACT NO. 83735				
		CHECKED: JGS	REVISED: -		FED. ROAD DIST. NO. [ILLINOIS] FED. AID PROJECT							
		DATE: 8/06/12	REVISED: -									