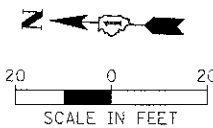


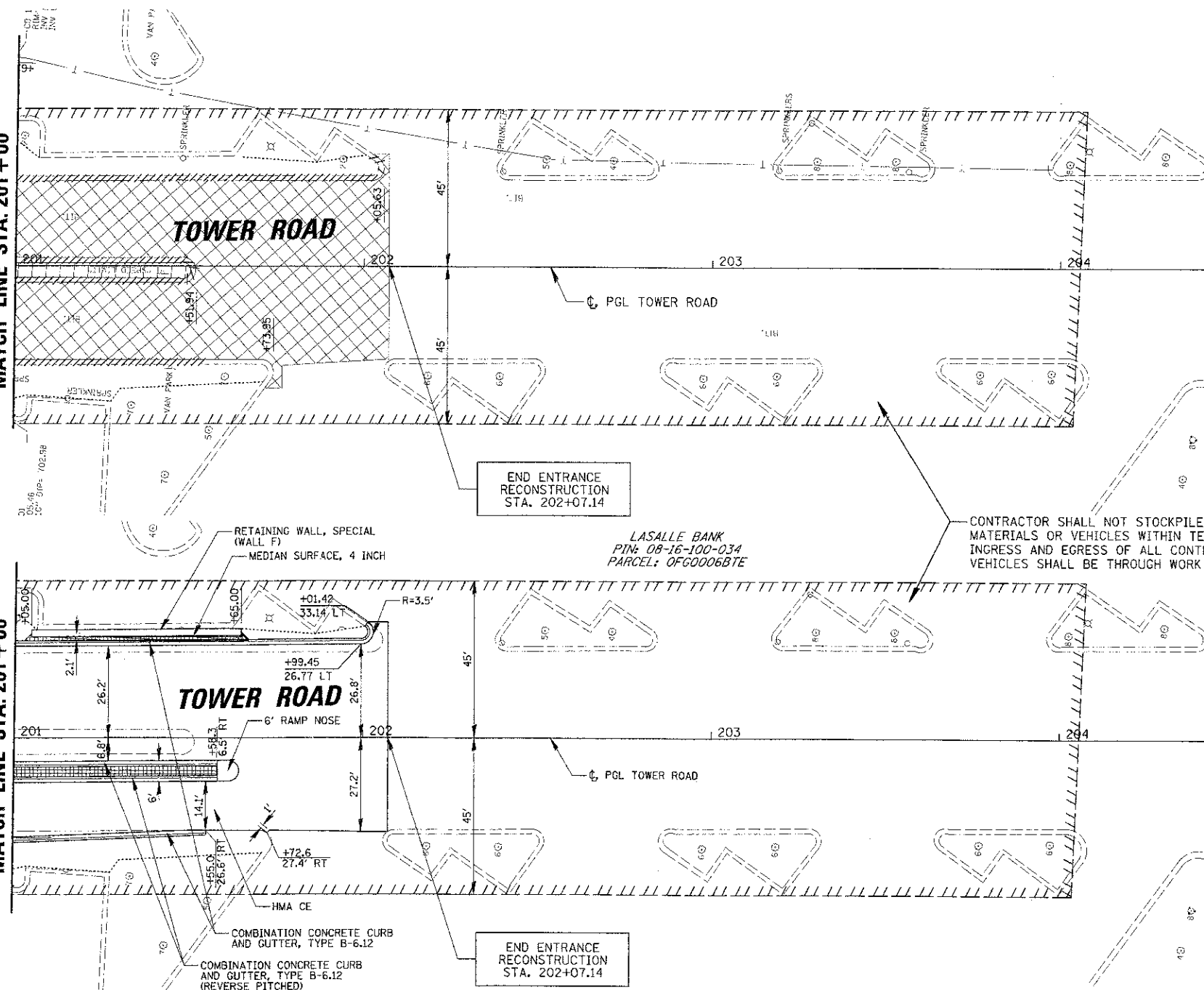
DATE	
BY	
REVISIONS	
NO. 1	PLAN
NO. 2	NOTES
NO. 3	NOTES
NO. 4	NOTES
NO. 5	NOTES
NO. 6	NOTES
NO. 7	NOTES
NO. 8	NOTES
NO. 9	NOTES
NO. 10	NOTES

DATE	
BY	
REVISIONS	
NO. 1	PLAN
NO. 2	NOTES
NO. 3	NOTES
NO. 4	NOTES
NO. 5	NOTES
NO. 6	NOTES
NO. 7	NOTES
NO. 8	NOTES
NO. 9	NOTES
NO. 10	NOTES



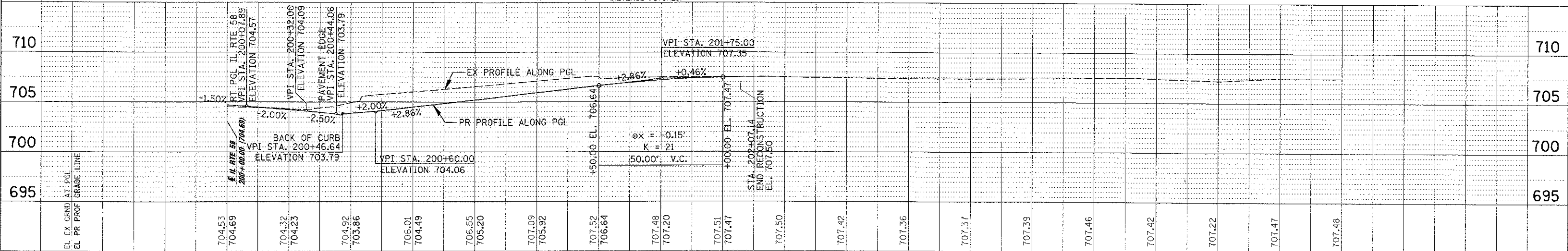
SEE SHEET NO. 22
MATCH LINE STA. 201+00

SEE SHEET NO. 31
MATCH LINE STA. 201+00



- LEGEND**
- PR CONSTRUCTION LIMITS
 - PAVEMENT REMOVAL
 - CURB AND GUTTER OR CURB REMOVAL
 - STORM SEWER REMOVAL
 - MEDIAN REMOVAL
 - MEDIAN SURFACE REMOVAL
 - REMOVE
 - RECONSTRUCT
 - ADJUST
 - DRIVEWAY REMOVAL
 - BITUMINOUS BIKE PATH REMOVAL (PAID AS EARTH EXCAVATION)
 - CONCRETE SIDEWALK REMOVAL
 - ADJ.BD (UTIL)
 - RELOC (UTIL)
 - TREE REMOVAL OF DIAMETER SHOWN

- LEGEND**
- PR CONSTRUCTION LIMITS
 - PROFILE GRADE LINE
 - EXISTING ROW
 - PROPOSED ROW
 - TEMPORARY EASEMENT
 - PCC BASE CRSE W/O CURB WITH PAVEMENT OVERLAY
 - PAVEMENT OVERLAY
 - SIDEWALK RAMPS
 - DETECTABLE WARNINGS
 - DEPRESSED CURB



FILE NAME	USER NAME - mvsrdonar	DESIGNED - BLL	REVISED -	STATE OF ILLINOIS DEPARTMENT OF TRANSPORTATION IL RTE 58 (GOLF ROAD) AND NEW WILKE ROAD IMPROVEMENTS EXISTING CONDITIONS PROPOSED ROADWAY AND PROFILE TOWER ROAD SCALE: 20H, 5V SHEET NO. 10 OF 10 SHEETS STA. 201+00 TO STA. 205+00	F.A.P. RTE. 0559	SECTION 00-00078-00-CH	COUNTY COOK	TOTAL SHEETS 116	SHEETS NO. 34
PROJECT NO.	PROJECT DATE - 8/30/2012	DRAWN - PMM	REVISED -		CONTRACT NO. 83735				
PROJECT NAME	PROJECT DATE	CHECKED - JGS	REVISED -		FED. ROAD DIST. NO.				
PROJECT NO.	PROJECT DATE	DATE - 8/06/12	REVISED -		ILLINOIS FED. AID PROJECT				