

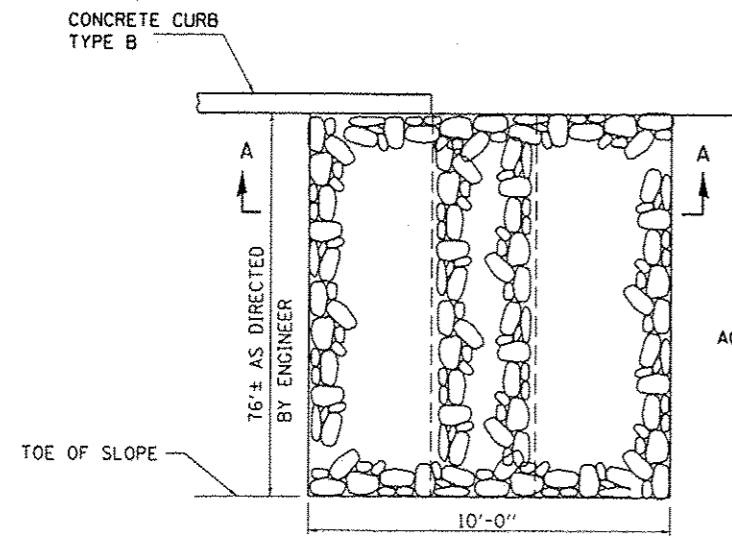
PLAN

NOTES

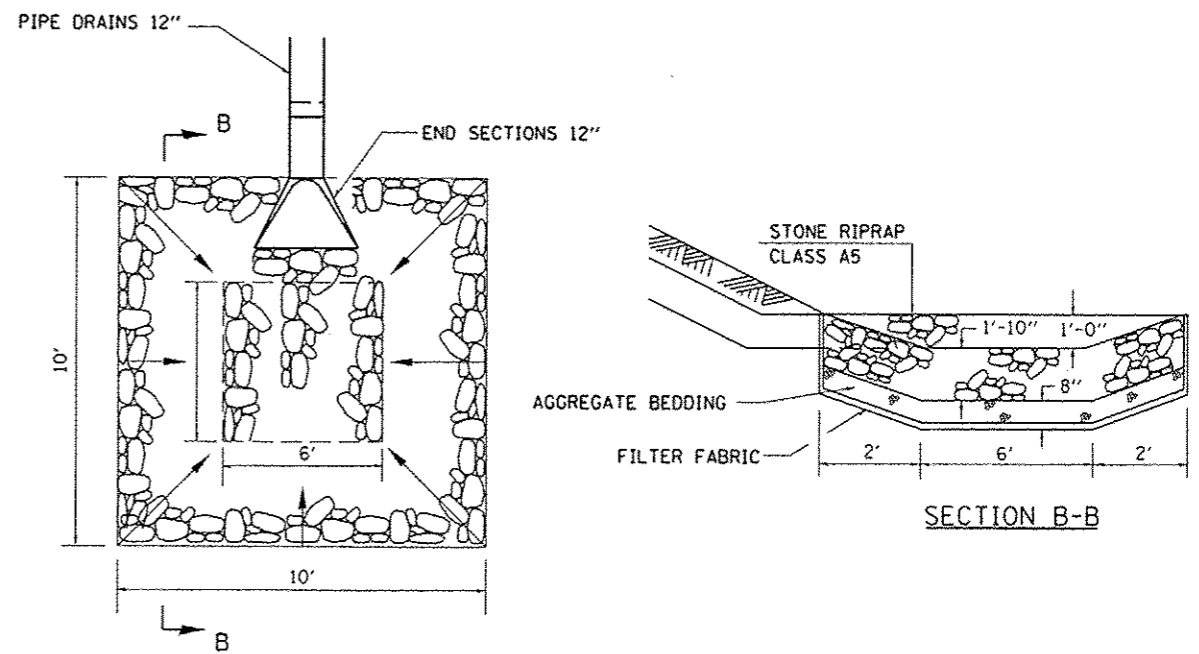
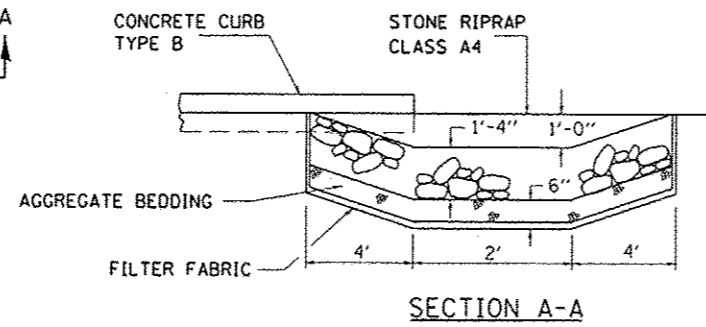
THE EXCAVATED MATERIAL MAY BE WASTED IN NEARBY EROSION CHANNELS AS DIRECTED BY THE ENGINEER.

THE COST OF EARTH EXCAVATION AND AGGREGATE BEDDING IS INCLUDED IN THE COST OF STONE RIP RAP.

SEE STANDARD 610001 FOR PIPE DRAIN DETAILS NOT SHOWN.



CURB OUTLET DETAIL



PIPE OUTLET DETAIL

FILE NAME =	USER NAME = gautneyrk	DESIGNED -	REVISED -
c:\pwwork\pripdot\gautneyrk\0253215\03-	0920_0921-sh.t.dgn	DRAWN -	REVISED -
	PLOT SCALE = 48:0 1" = 10'	CHECKED -	REVISED -
	PLOT DATE = 9/27/2012	DATE -	REVISED -

STATE OF ILLINOIS
DEPARTMENT OF TRANSPORTATION

DRAINAGE IMPROVEMENT
S.N. 030-0020 OVER LAWLER DITCH

SCALE: _____ SHEET NO. ___ OF ___ SHEETS STA. 331+85.50

F.A.P. RTE.	SECTION	COUNTY	TOTAL SHEETS	SHEET NO.
782	D8 CM BRIDGE REPAIR 2012-3	GALLATIN	14	9
				CONTRACT NO. 78253
[ILLINOIS] FED. AID PROJECT				