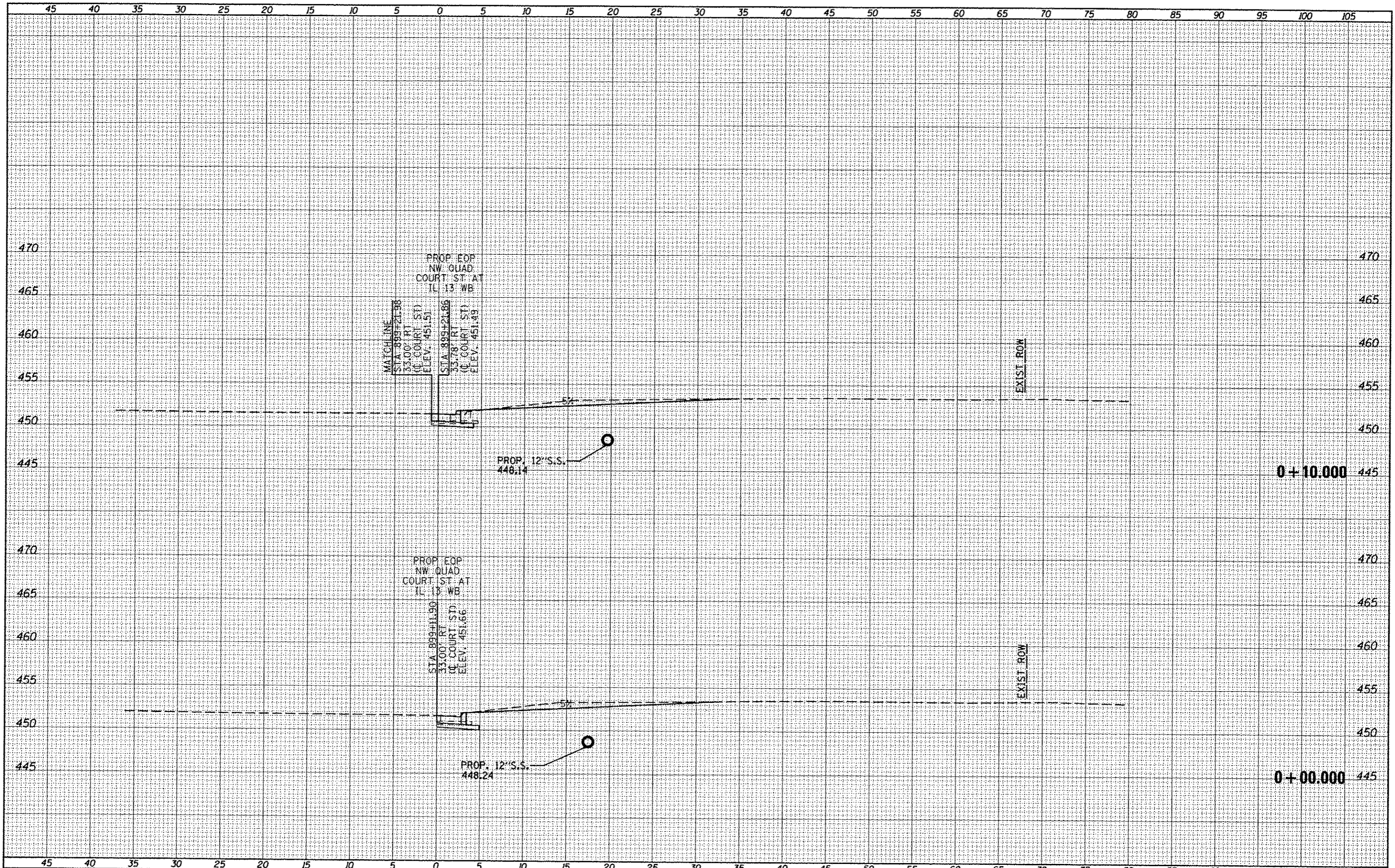


| | |
|---------------|--|
| DATE | |
| BY | |
| FINAL SURVEY | |
| SURVEYED | |
| NOTE BOOK | |
| TEMPLATE | |
| AREAS | |
| AREAS CHECKED | |

| | |
|-----------------|--|
| DATE | |
| BY | |
| ORIGINAL SURVEY | |
| SURVEYED | |
| NOTE BOOK | |
| TEMPLATE | |
| AREAS | |
| AREAS CHECKED | |



FILE NAME: c:\pwwork\pwwork\kellykd\09445\178203-ht-CourtStQuad.dgn
 USER NAME: *USER*
 PLOT SCALE: 1/8" = 1' / in.
 PLOT DATE: 5/11/2012

| | |
|------------|-----------|
| DESIGNED - | REVISED - |
| DRAWN - | REVISED - |
| CHECKED - | REVISED - |
| DATE - | REVISED - |

**STATE OF ILLINOIS
DEPARTMENT OF TRANSPORTATION**

**COURT ST (IL 37) NORTHWEST QUADRANT
CROSS SECTIONS**

SCALE: SHEET OF SHEETS STA. +00.000 TO STA. +10.000

| | | | | |
|--------------------|------------------------|------------|---------------------------|-----------|
| F.A.P. RTE. | SECTION | COUNTY | TOTAL SHEETS | SHEET NO. |
| 331 | (1X-1R-5,RS-3,N-5,TS-4 | WILLIAMSON | 288 | 281 |
| CONTRACT NO. 78203 | | | ILLINOIS FED. AID PROJECT | |