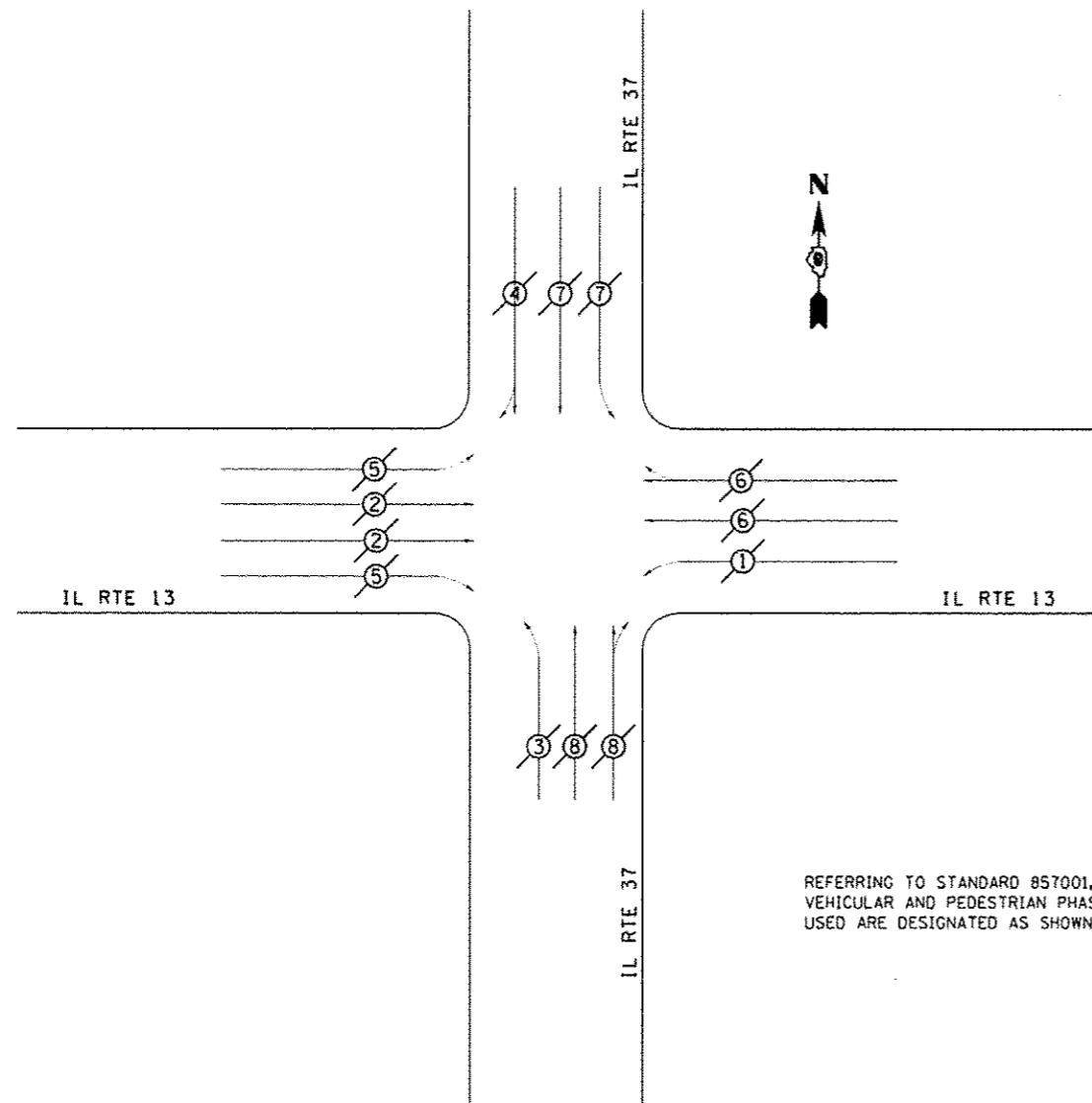


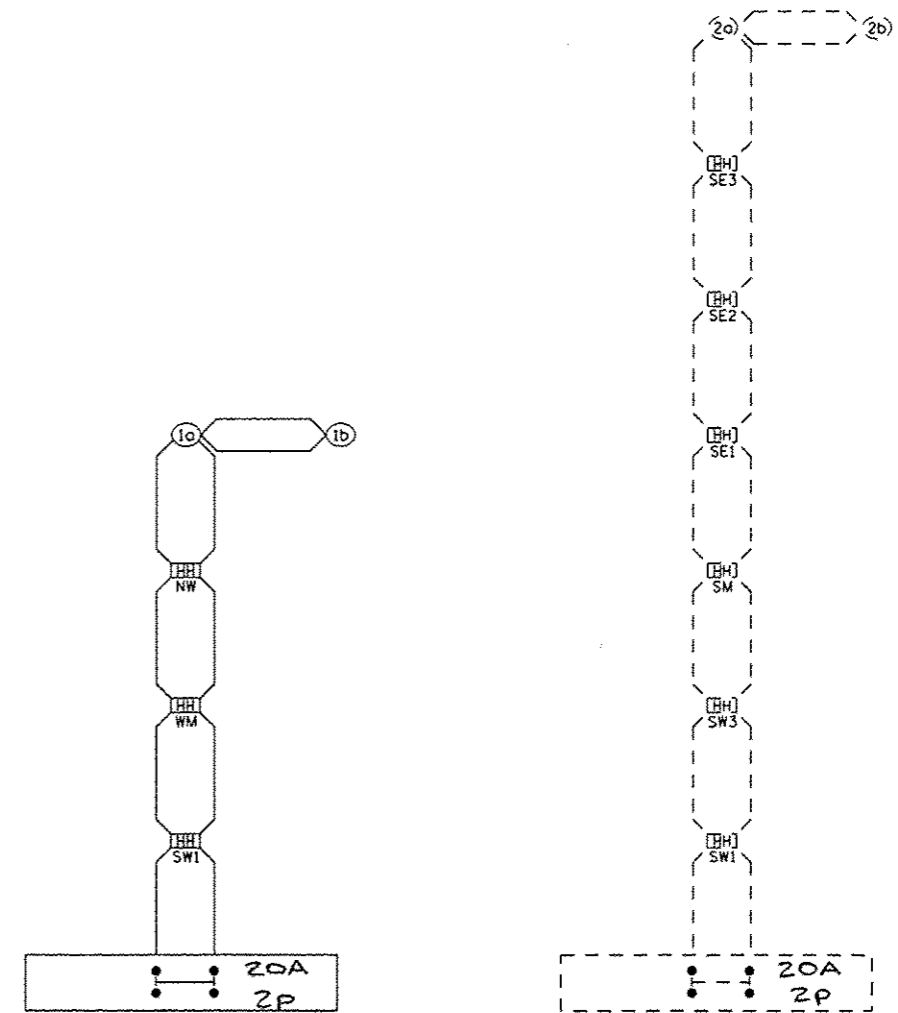
**PHASE DESIGNATION DIAGRAM
IL RTE 13 WITH IL RTE 37**



REFERRING TO STANDARD 857001, THE
VEHICULAR AND PEDESTRIAN PHASES
USED ARE DESIGNATED AS SHOWN.

LEGEND

- VEHICULAR MOVEMENT
- PEDESTRIAN MOVEMENT
- NUMBER REFERS TO ASSOCIATED PHASE



- SW1 SOUTHWEST CORNER
STA 884+25 62.6' RT (IL 13 EB)
- SW2 SOUTHWEST CORNER
STA 886+52 26.0' RT (IL 13 EB)
- SW3 SOUTHWEST CORNER
STA 1+27 52.1' RT (IL 37)
- NW NORTHWEST CORNER
STA 886+61, 67.2' LT (IL 13 WB)
- SM SOUTH MEDIAN
STA 1+26, 7.8' RT (IL 37)
- SE1 SOUTHEAST CORNER
STA 1+25 41.7' LT (IL 37)
- SE2 SOUTHEAST CORNER
STA 1+00 46.0' LT (IL 37)
- SE3 SOUTHEAST CORNER
STA 0+88 31.4' LT (IL 13 EB)
- WM WEST MEDIAN
STA 886+42, 21.7' LT (IL 13 EB)

PROPOSED CONTROL INSTALLATION
PHOTOCELL RELAY
20 AMP - 240 VOLT

FILE NAME	USER NAME	DESIGNED	REVISED
cs:\pwork\pwork\kellyk\kellyk\8451178203\pht-tsig.dgn	*USER*	-	-
		DRAWN	REVISED
		-	-
		CHECKED	REVISED
		-	-
		DATE	REVISED
		-	-

**STATE OF ILLINOIS
DEPARTMENT OF TRANSPORTATION**

**PHASE DESIGNATION
DIAGRAM - IL 37**

SCALE: SHEET NO. OF SHEETS STA. TO STA.

F.A. RTE.	SECTION	COUNTY	TOTAL SHEETS	SHEET NO.
331	(IX-11R-5,RS-3,N-5,TS-4	WILLIAMSON	288	139
CONTRACT NO. 78203			ILLINOIS FED. AID PROJECT	