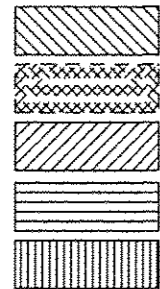
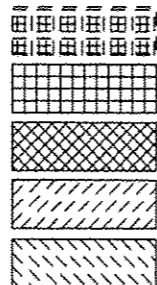


LEGEND



SIDEWALK
 HMA SHOULDERS, 8 INCH
 COMBINATION CONCRETE CURB & GUTTER, TYPE B-6.24
 COMBINATION CONCRETE CURB & GUTTER, TYPE B-6.12
 COMBINATION CONCRETE CURB & GUTTER, TYPE B-6.06



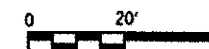
CONCRETE MEDIAN SURFACE, 4 INCH
 PCC PAVEMENT 10",
 SUBBASE GRANULAR MATERIAL TYPE A, 6"
 FULL DEPTH HMA PAVEMENT 14.75",
 SUBBASE GRANULAR MATERIAL TYPE A, 8"
 CONCRETE MEDIAN, TYPE SB-6.06
 PCC DRIVEWAY PAVEMENT, 8 INCH



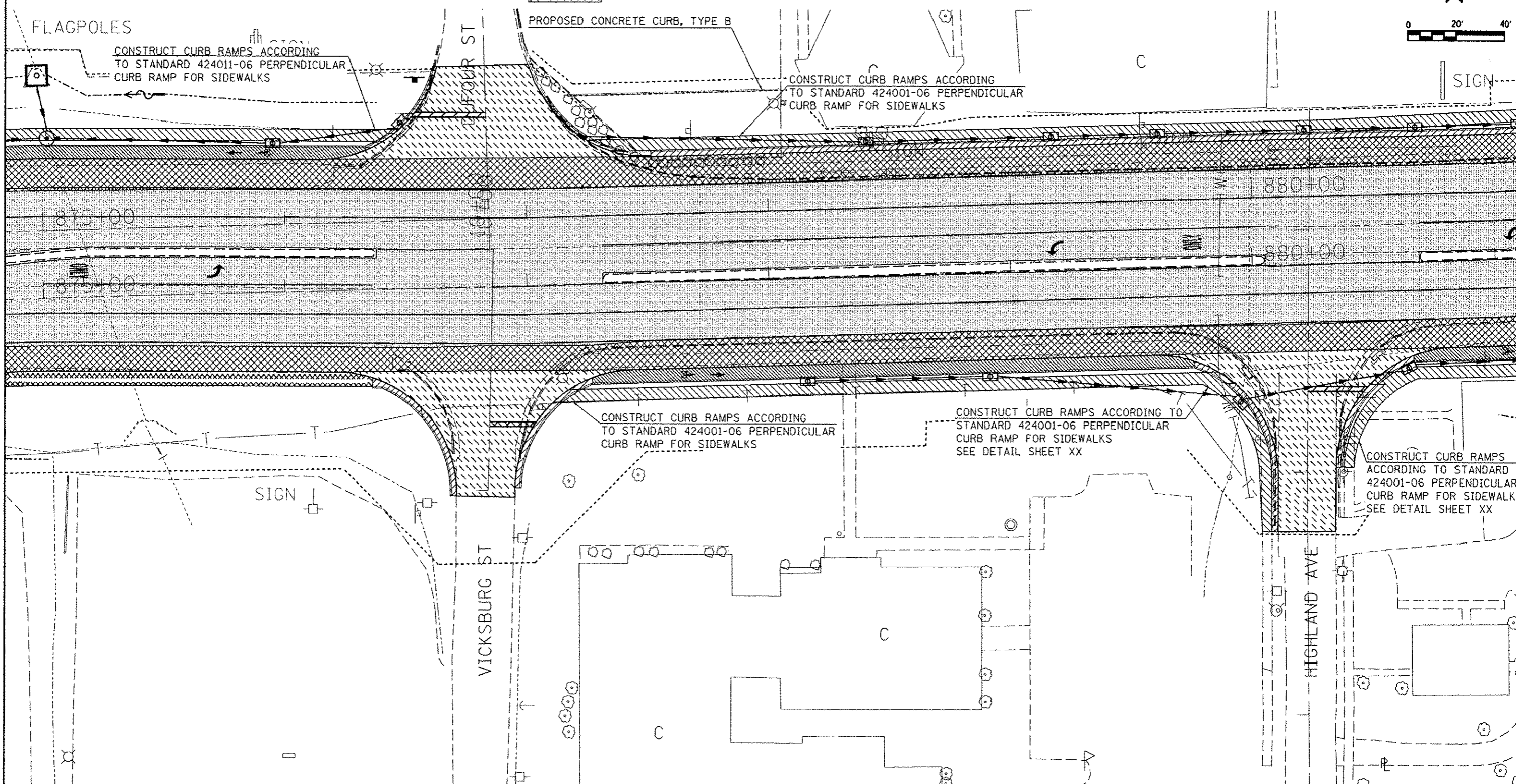
COMBINATION CONCRETE CURB & GUTTER, TYPE B (SPECIAL)
 HMA RESURFACING, 1.5" HMA SURFACE, 1.75" HMA BINDER

NOTE:

PLACE DETECTABLE WARNINGS
 ON ALL CURB RAMPS
 SEE DETAIL SHEETS 141-144



SIGN



FILE NAME: 01\pwork\psidot\kellagrd\0184451\78203	USER NAME: #USER#	DESIGNED: -	REVISED: -	STATE OF ILLINOIS DEPARTMENT OF TRANSPORTATION	PROPOSED CONSTRUCTION			F.A.P. RTE. 331	SECTION (1X-1)R-5,RS-3,N-5,TS-4	COUNTY WILLIAMSON	TOTAL SHEETS 288	SHEET NO. 85
PLOT SCALE: 48.0000' / in.	DRAWN: -	REVISIONS: -	SCALE: -		SHEET NO. -	OF SHEETS -	STA. TO STA. -	CONTRACT NO. 78203				
PLOT DATE: 5/11/2012	CHECKED: -	DATE: -										
ILLINOIS FED. AID PROJECT												