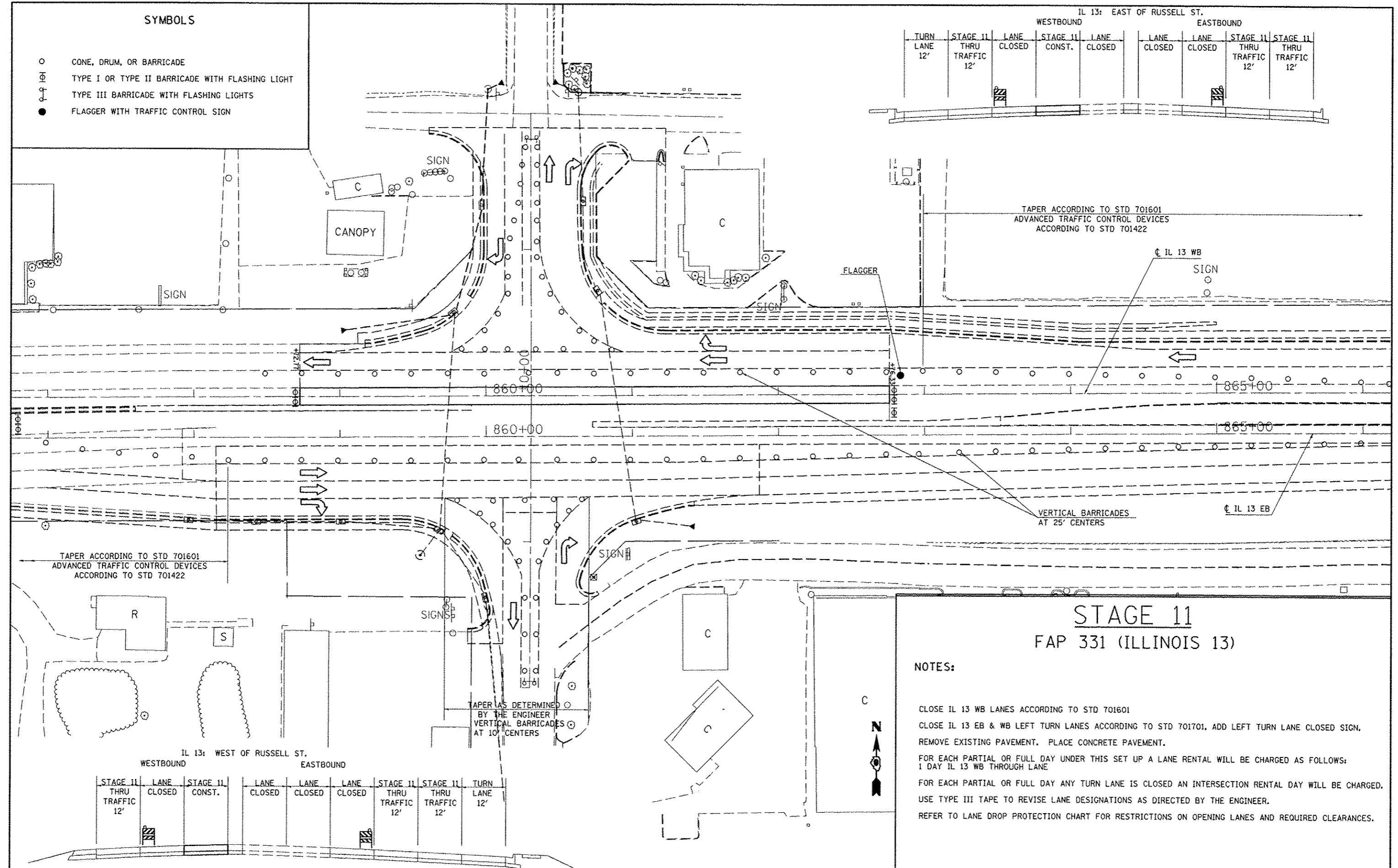


**SYMBOLS**

- CONE, DRUM, OR BARRICADE
- ⊕ TYPE I OR TYPE II BARRICADE WITH FLASHING LIGHT
- ⊕ TYPE III BARRICADE WITH FLASHING LIGHTS
- FLAGGER WITH TRAFFIC CONTROL SIGN



IL 13: EAST OF RUSSELL ST.

WESTBOUND				EASTBOUND				
TURN LANE 12'	STAGE 11 THRU TRAFFIC 12'	LANE CLOSED	STAGE 11 CONST.	LANE CLOSED	LANE CLOSED	LANE CLOSED	STAGE 11 THRU TRAFFIC 12'	STAGE 11 THRU TRAFFIC 12'

TAPER ACCORDING TO STD 701601  
ADVANCED TRAFFIC CONTROL DEVICES  
ACCORDING TO STD 701422

TAPER ACCORDING TO STD 701601  
ADVANCED TRAFFIC CONTROL DEVICES  
ACCORDING TO STD 701422

**STAGE 11**  
**FAP 331 (ILLINOIS 13)**

**NOTES:**

- CLOSE IL 13 WB LANES ACCORDING TO STD 701601
- CLOSE IL 13 EB & WB LEFT TURN LANES ACCORDING TO STD 701701, ADD LEFT TURN LANE CLOSED SIGN.
- REMOVE EXISTING PAVEMENT. PLACE CONCRETE PAVEMENT.
- FOR EACH PARTIAL OR FULL DAY UNDER THIS SET UP A LANE RENTAL WILL BE CHARGED AS FOLLOWS:  
1 DAY IL 13 WB THROUGH LANE
- FOR EACH PARTIAL OR FULL DAY ANY TURN LANE IS CLOSED AN INTERSECTION RENTAL DAY WILL BE CHARGED.
- USE TYPE III TAPE TO REVISE LANE DESIGNATIONS AS DIRECTED BY THE ENGINEER.
- REFER TO LANE DROP PROTECTION CHART FOR RESTRICTIONS ON OPENING LANES AND REQUIRED CLEARANCES.

IL 13: WEST OF RUSSELL ST.

WESTBOUND			EASTBOUND					
STAGE 11 THRU TRAFFIC 12'	LANE CLOSED	STAGE 11 CONST.	LANE CLOSED	LANE CLOSED	LANE CLOSED	STAGE 11 THRU TRAFFIC 12'	STAGE 11 THRU TRAFFIC 12'	TURN LANE 12'

FILE NAME =  
USER NAME = #USER#  
PLOT SCALE = 60.0000 1/ in.  
PLOT DATE = 5/11/2012

DESIGNED -  
DRAWN -  
CHECKED -  
DATE -

REVISED -  
REVISED -  
REVISED -  
REVISED -

**STATE OF ILLINOIS**  
**DEPARTMENT OF TRANSPORTATION**

**IL 13 STAGE 11**

SCALE: 30 SHEET NO. 1 OF 1 SHEETS STA. TO STA.

F.A.P. RTE.	SECTION	COUNTY	TOTAL SHEETS	SHEET NO.
331	(1X-1R-5,RS-3,N-5,TS-4	WILLIAMSON	288	79

CONTRACT NO. 78203  
ILLINOIS FED. AID PROJECT