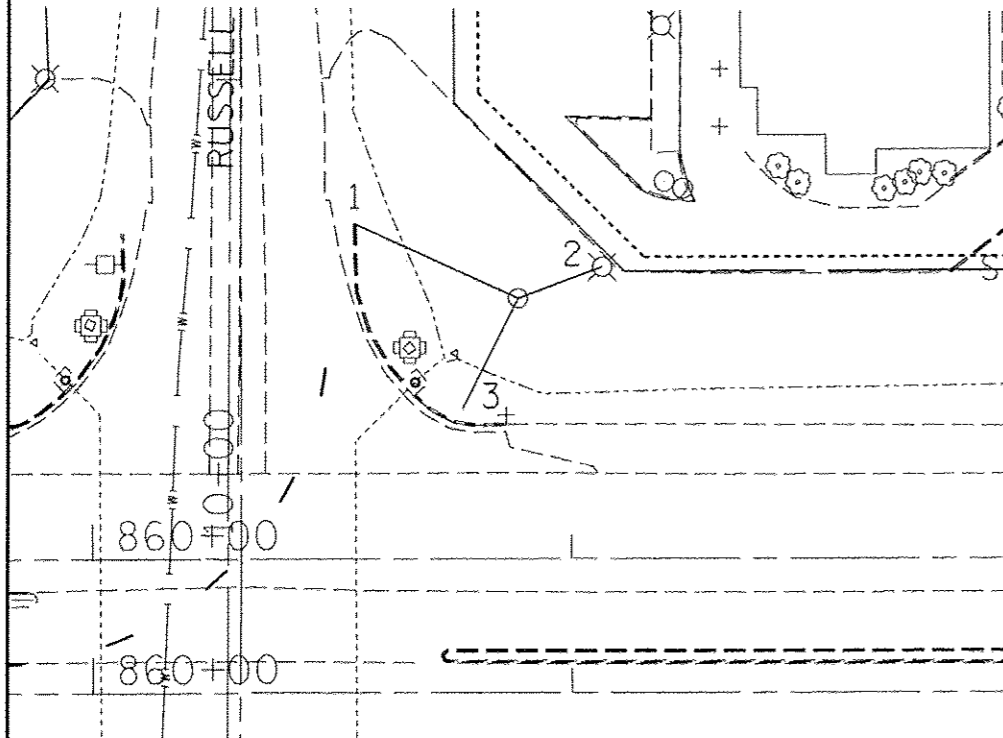
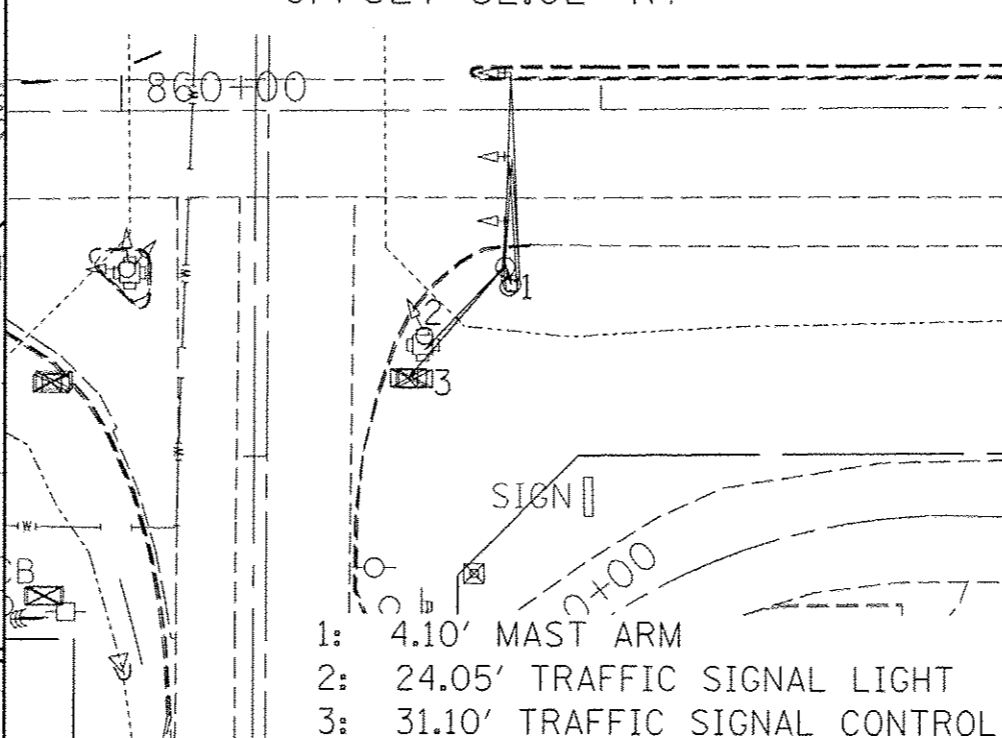


POINT C2910 1: 37.35' CUT X AT END OF C&G
 N 391712.928 2: 18.7' CUT X IN FOUNDATION
 E 808335.890 3: 24.75' CUT X ON HANDHOLE
 ELEV. 455.522
 STA. 860+89.03 WB IL 13
 OFFSET 54.35' LT

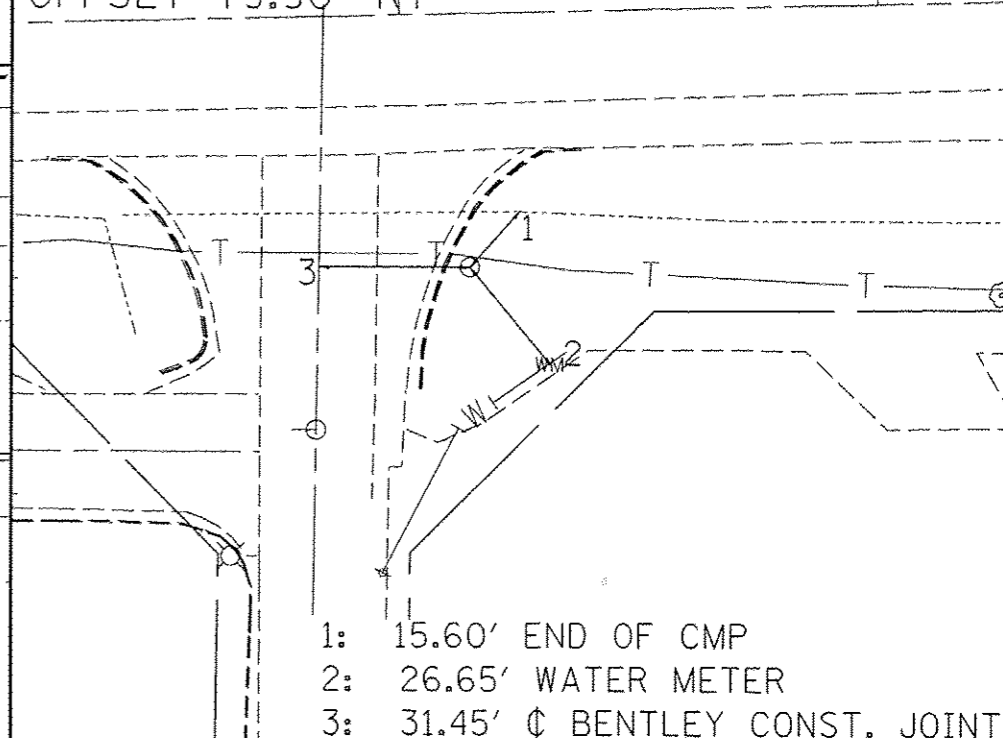


POINT T0318
 N 391598.491
 E 808328.648
 ELEV. 453.267
 STA. 860+80.88 EB IL 13
 OFFSET 32.02' RT



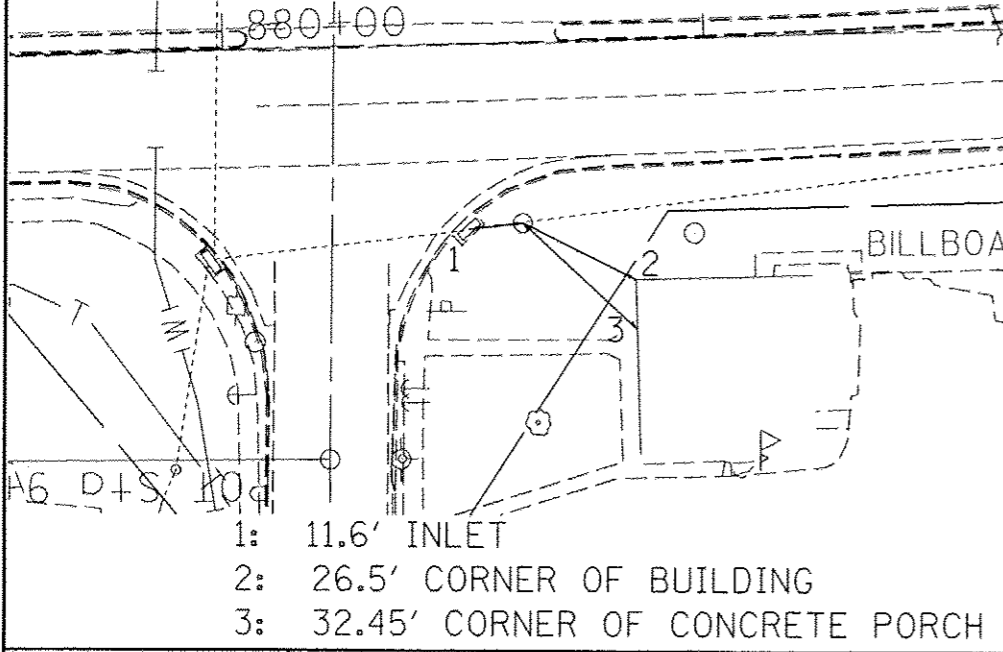
- 1: 4.10' MAST ARM
- 2: 24.05' TRAFFIC SIGNAL LIGHT
- 3: 31.10' TRAFFIC SIGNAL CONTROL

POINT T0309
 N 391592.437
 E 809462.515
 ELEV. 449.843
 STA. 872+13.34 WB IL 13
 OFFSET 79.90' RT



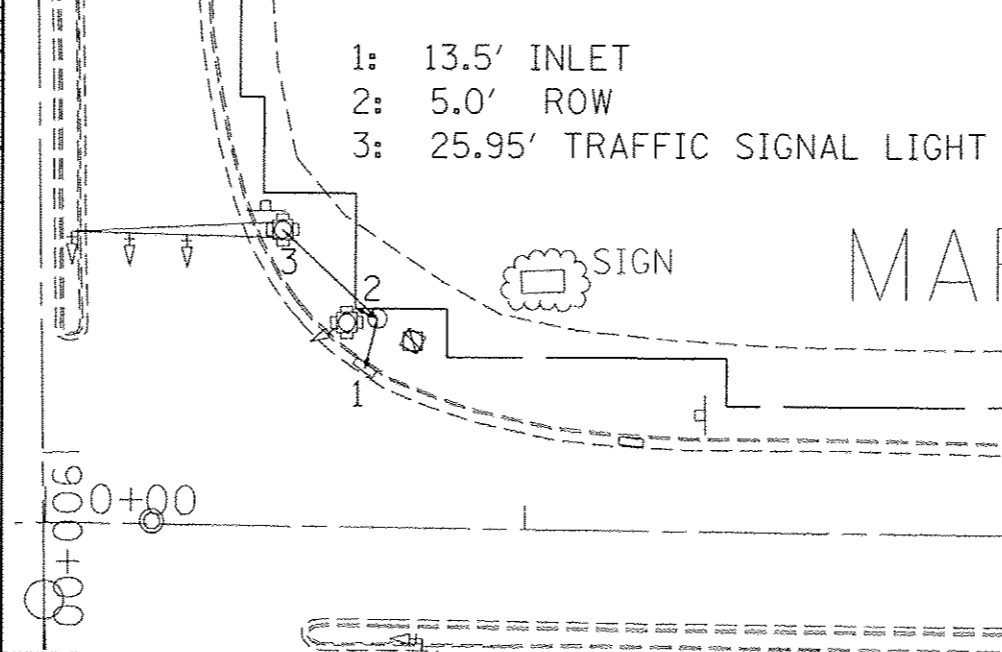
- 1: 15.60' END OF CMP
- 2: 26.65' WATER METER
- 3: 31.45' BENTLEY CONST. JOINT

POINT T0322
 N 391631.770
 E 810309.964
 ELEV. 446.999
 STA. 880+61.32 EB IL 13
 OFFSET 37.80' RT



- 1: 11.6' INLET
- 2: 26.5' CORNER OF BUILDING
- 3: 32.45' CORNER OF CONCRETE PORCH

POINT T0319
 N 391750.106
 E 811037.132
 ELEV. 450.350
 STA. 0+80.57 IL 13
 OFFSET 47.76' LT



- 1: 13.5' INLET
- 2: 5.0' ROW
- 3: 25.95' TRAFFIC SIGNAL LIGHT

FILE NAME =	USER NAME = #USER#	DESIGNED -	REVISED -
c:\pwork\pwork\kell\gk\d8184451\78203\shh-note.dgn		DRAWN -	REVISED -
PLOT SCALE = 48.0000' / in.		CHECKED -	REVISED -
PLOT DATE = 5/11/2012		DATE -	REVISED -

**STATE OF ILLINOIS
 DEPARTMENT OF TRANSPORTATION**

TIE POINTS			
SCALE:	SHEET	OF	SHEETS
	STA.	TO	STA.

F.A.P. RTE.	SECTION	COUNTY	TOTAL SHEETS	SHEET NO.
331	(1X-1R-5,RS-3,N-5,TS-4	WILLIAMSON	288	56
CONTRACT NO. 78203				
ILLINOIS FED. AID PROJECT				