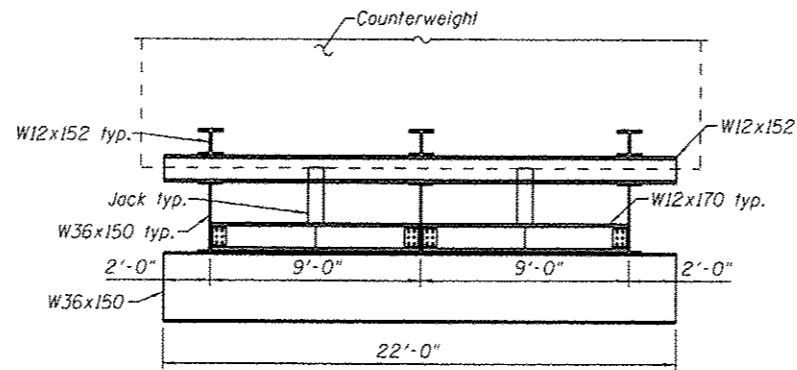
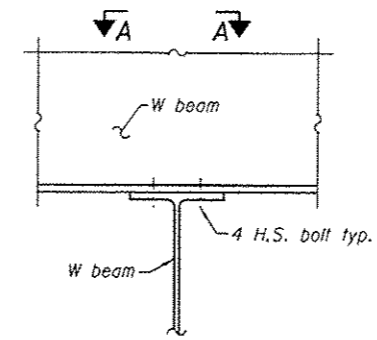


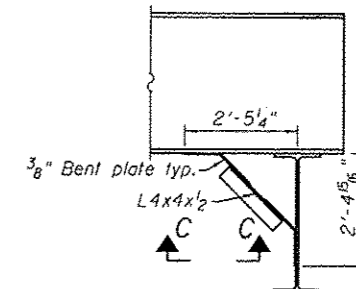
STAGE I SIDE VIEW



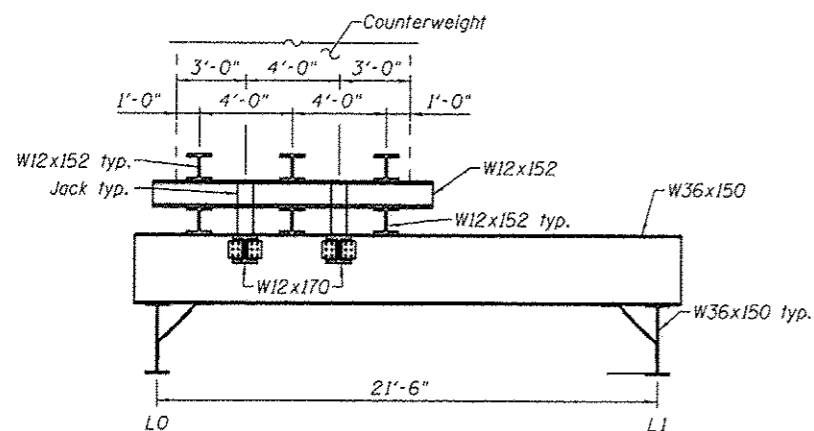
STAGE I FRONT VIEW



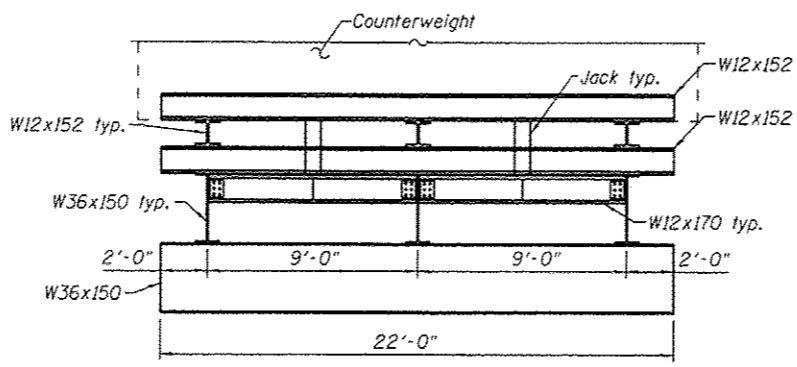
DETAIL A
At all beam intersections



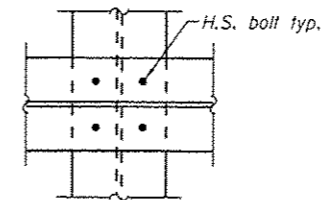
DETAIL C



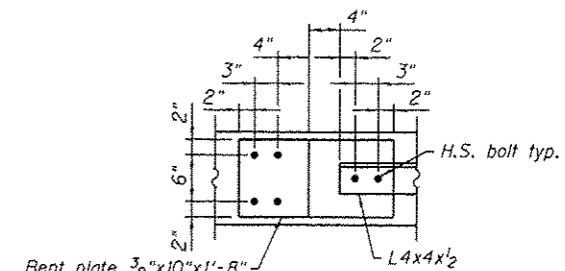
STAGE II SIDE VIEW



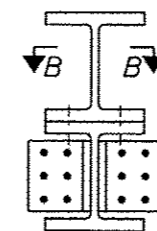
STAGE II FRONT VIEW



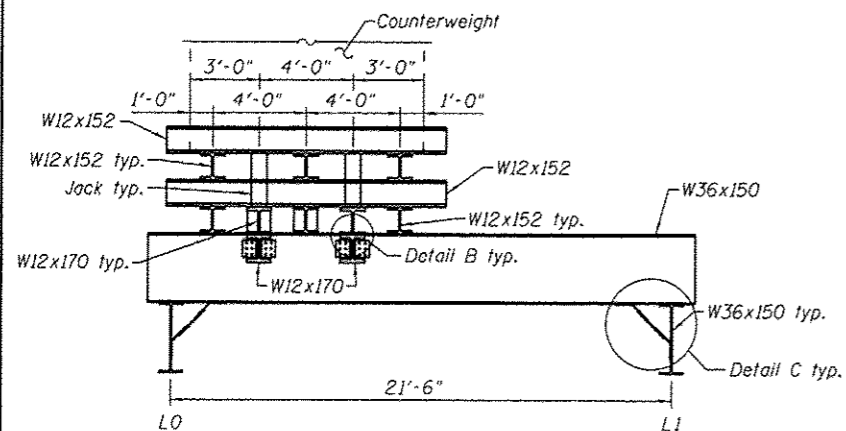
SECTION A-A



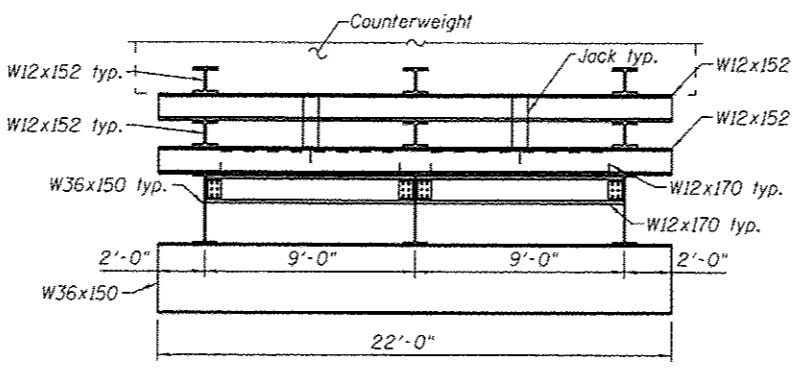
SECTION C-C
(Flange connection is shown and web connection is similar)



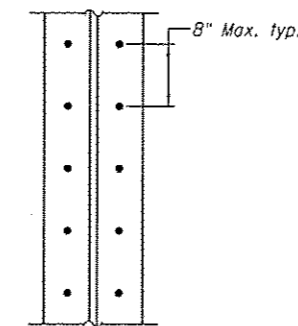
DETAIL B



STAGE III SIDE VIEW



STAGE III FRONT VIEW



SECTION B-B

BOLT LEGEND

- ◊ Existing fastener to remain
- ⊙ New bolt in existing hole
- New bolt in new hole
- New countersunk bolt on far side

Notes:
For additional information see sheet 4 of 15.

	USER NAME *	DESIGNED - JAK	REVISOR -	STATE OF ILLINOIS DEPARTMENT OF TRANSPORTATION	TEMPORARY COUNTERWEIGHT SUPPORT SYSTEM AND JACKING DETAILS - 2 STRUCTURE NO. 086-0001 SHEET NO. 5 OF 15 SHEETS	F.A.P. RTE.	SECTION	COUNTY	TOTAL SHEETS	SHEET NO.
	PLOT SCALE *	CHECKED - DMS	REVISOR -			757	(2011)	PIKE/SCOTT	17	7
	PLOT DATE *	DRAWN - RSJ	REVISOR -			CONTRACT NO. 72F75			ILLINOIS FED. AID PROJECT	
		CHECKED - JAK	REVISOR -							