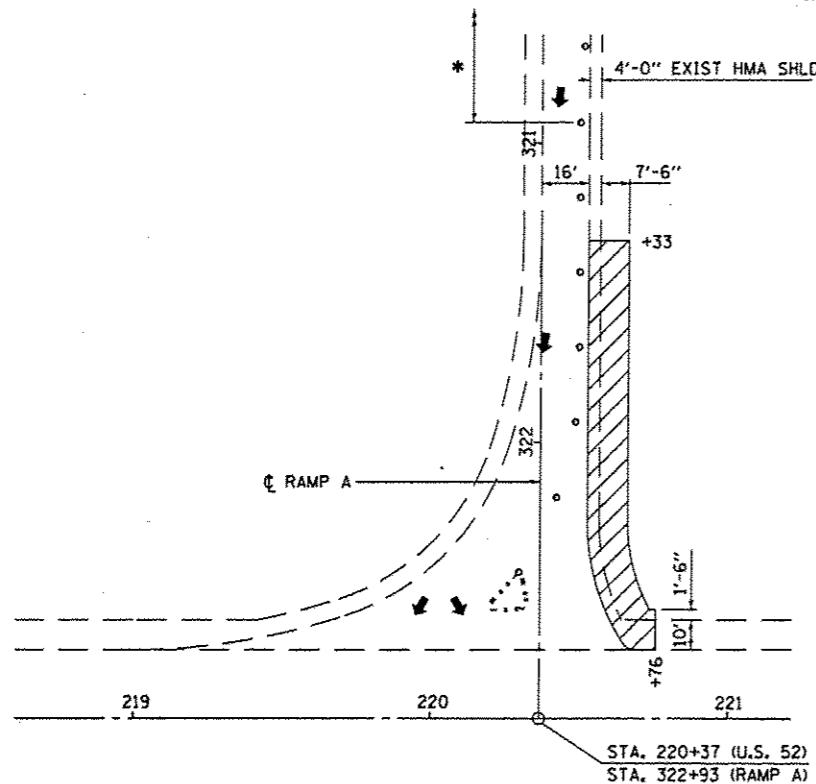
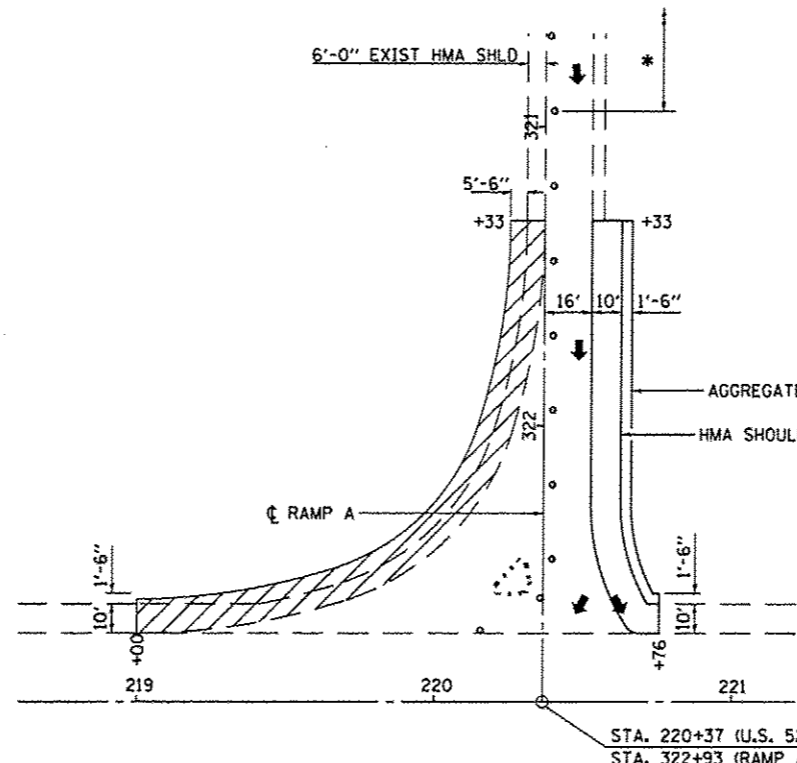


*BEGIN TRAFFIC BARREL TAPER ACCORDING TO STANDARD 701456



**RAMP A
STAGE I**

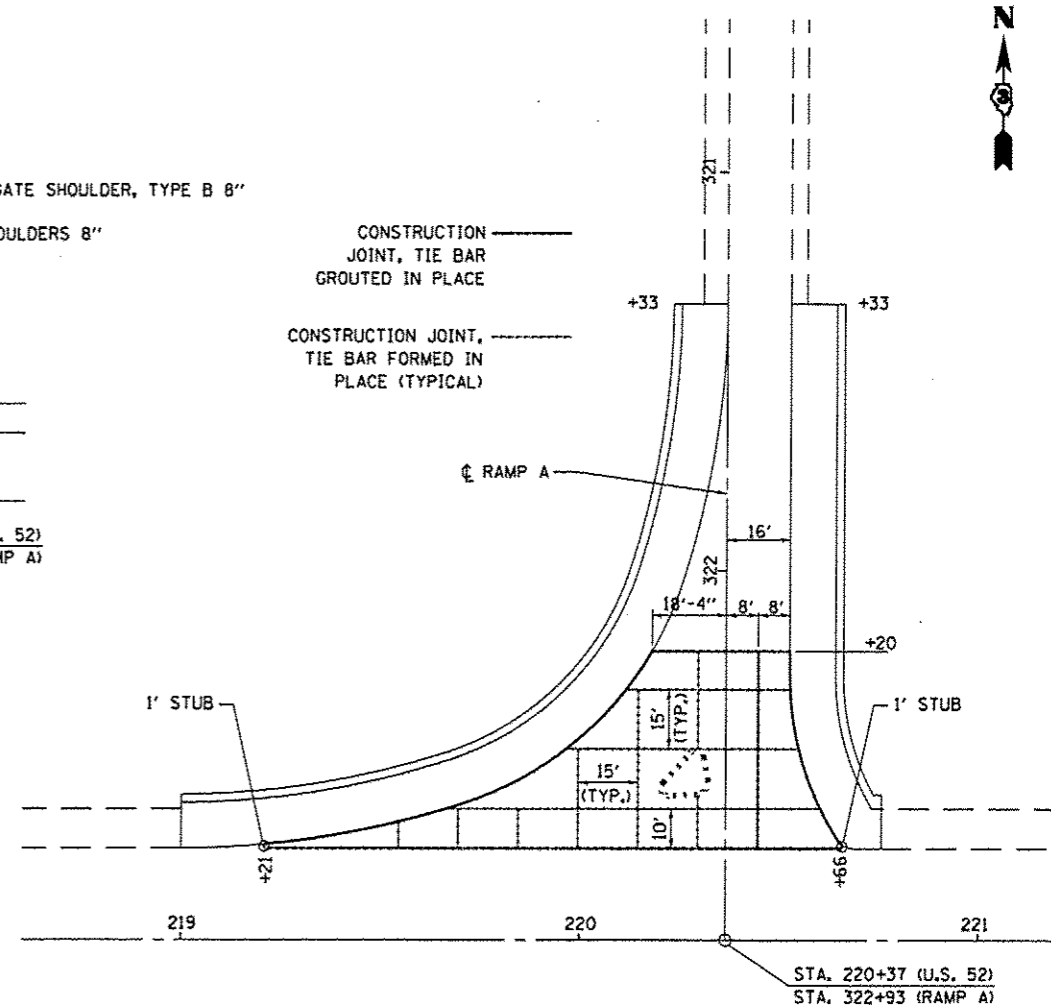
SHOULDER REMOVAL AND REPLACEMENT 8"



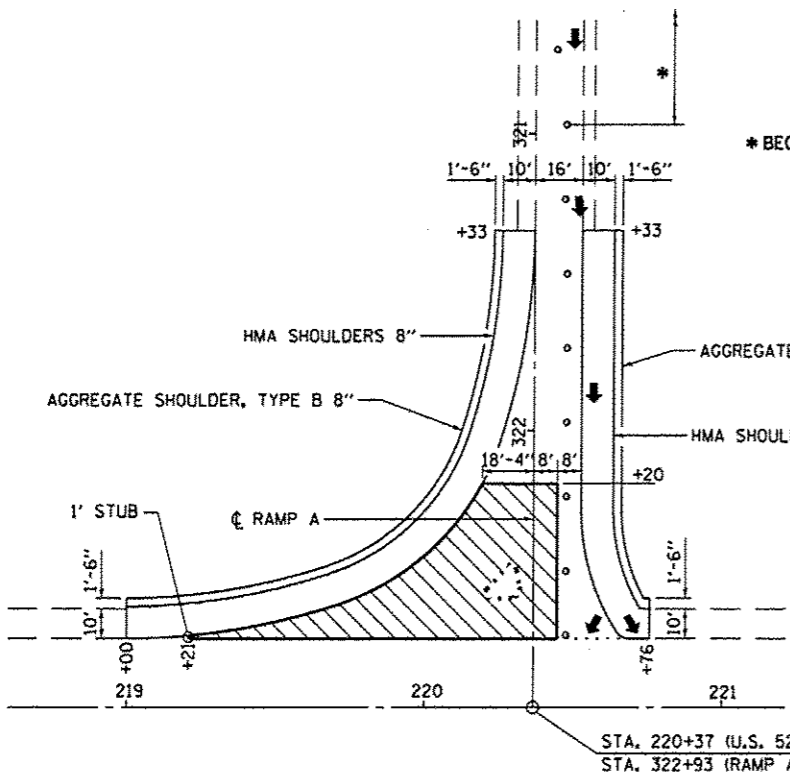
**RAMP A
STAGE II**

CONSTRUCTION JOINT, TIE BAR GROUTED IN PLACE

CONSTRUCTION JOINT, TIE BAR FORMED IN PLACE (TYPICAL)

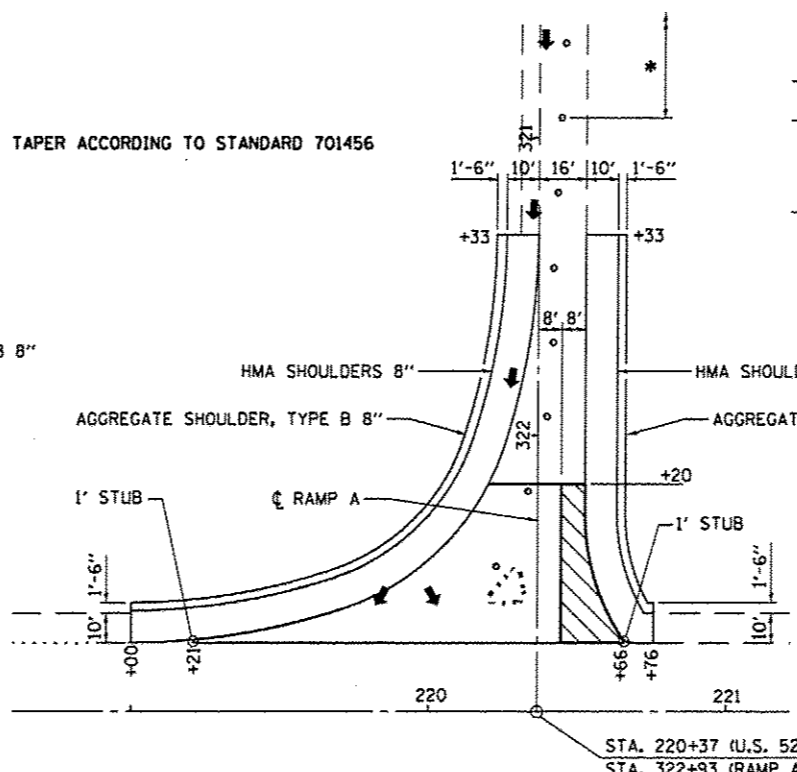


RAMP A



**RAMP A
STAGE III**

PCC PAVEMENT REMOVAL AND REPLACEMENT 8"



**RAMP A
STAGE IV**

NOTE

TRAFFIC CONTROL AND PROTECTION FOR RAMP WORK SHALL BE IN ACCORDANCE WITH "TRAFFIC CONTROL AND PROTECTION, STANDARD 701456.

FILE NAME =	USER NAME = woodshankr1	DESIGNED - RW	REVISED -	STATE OF ILLINOIS DEPARTMENT OF TRANSPORTATION	CONSTRUCTION DETAILS - RAMP A	F.A.P. RTE.	SECTION	COUNTY	TOTAL SHEETS	SHEET NO.
ci:\pr_work\pedit\woodshankr1\d8389005\066C38-shd-detailed.dgn	DRAWN - RW	REVISED -	603			(50-6HB-1)1-1	LASALLE	13	12	
PLOT SCALE = 100.0000' / 1"	CHECKED -	REVISED -	SCALE: SHEET 1 OF 1 SHEETS STA. 321+33 TO STA. 322+70			CONTRACT NO. 66C38		ILLINOIS FED. AID PROJECT		
Default	DATE -	REVISED -								