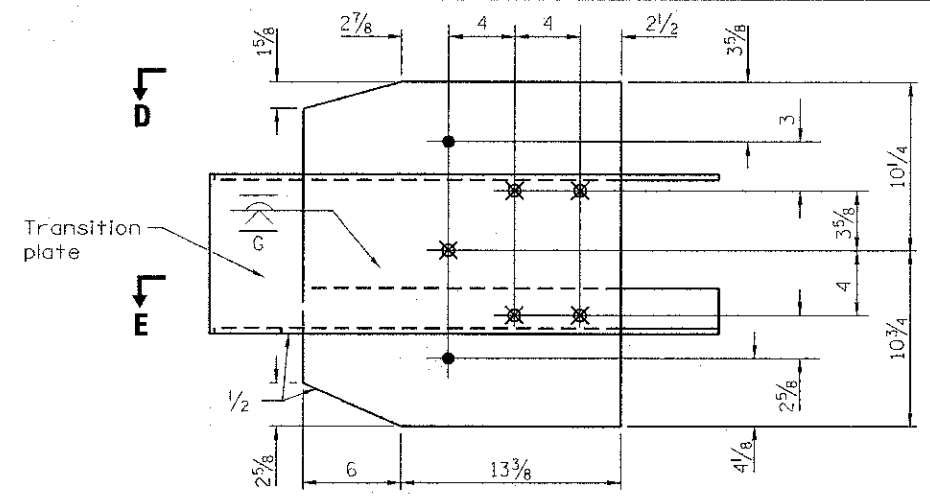
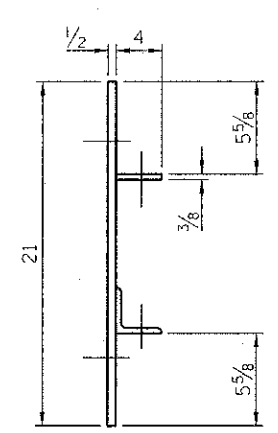
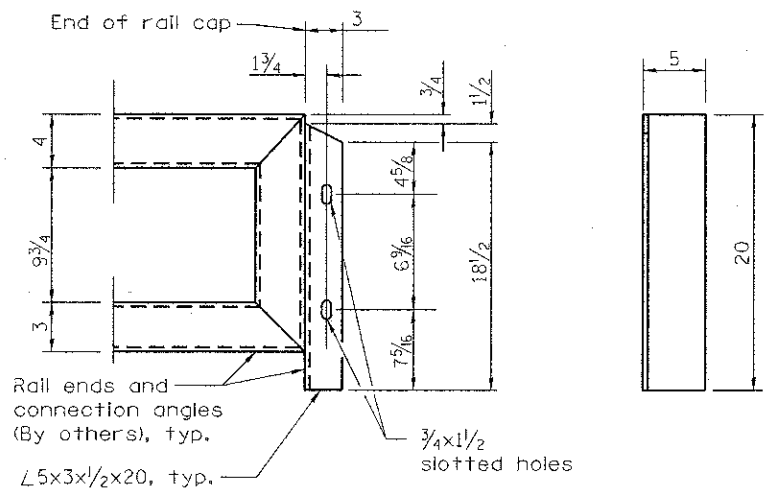
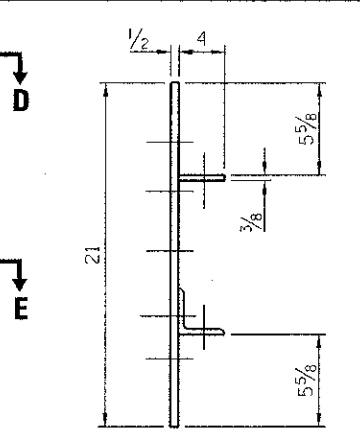


ATTENUATOR CONNECTION PLATE ASSEMBLY DETAILS



GUARDRAIL CONNECTION PLATE ASSEMBLY DETAILS



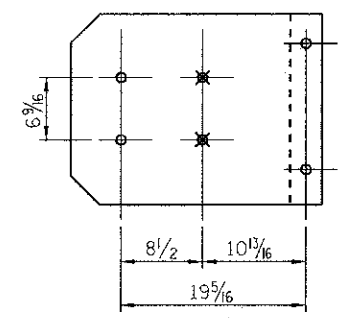
END VIEW

MODIFIED CONNECTION ANGLE

ATTENUATOR CONNECTION (NW & SW)

LEGEND (NW & SW)

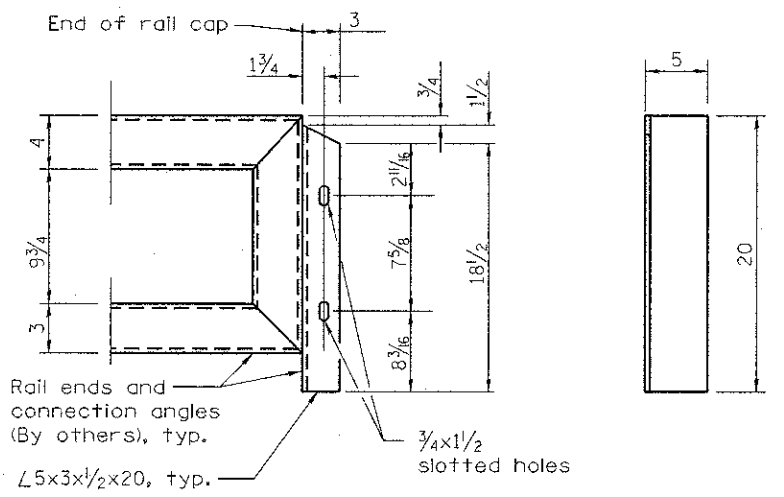
- ⌀ 4-1 holes
- for 7/8 H.S. bolts and nuts
- ⊗ Drill and tap 2 holes for 7/8 H.S. bolts.



MODIFIED ATTENUATOR END SHOE (NW & SW)

LEGEND (NE & SE)

- ⌀ 2-1 holes
- for 7/8 H.S. bolts and nuts
- ⊗ Drill and tap 5 holes for 7/8 H.S. bolts.

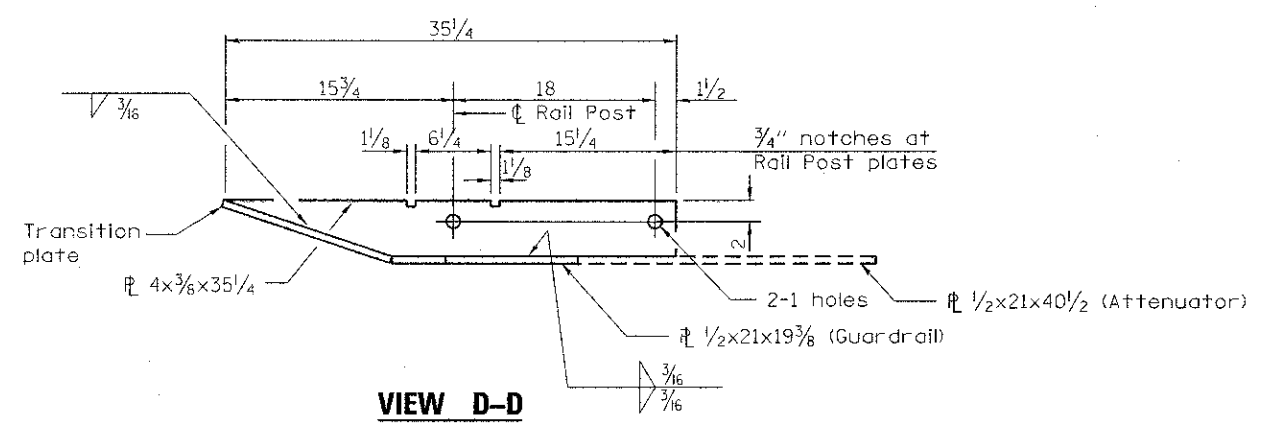


END VIEW

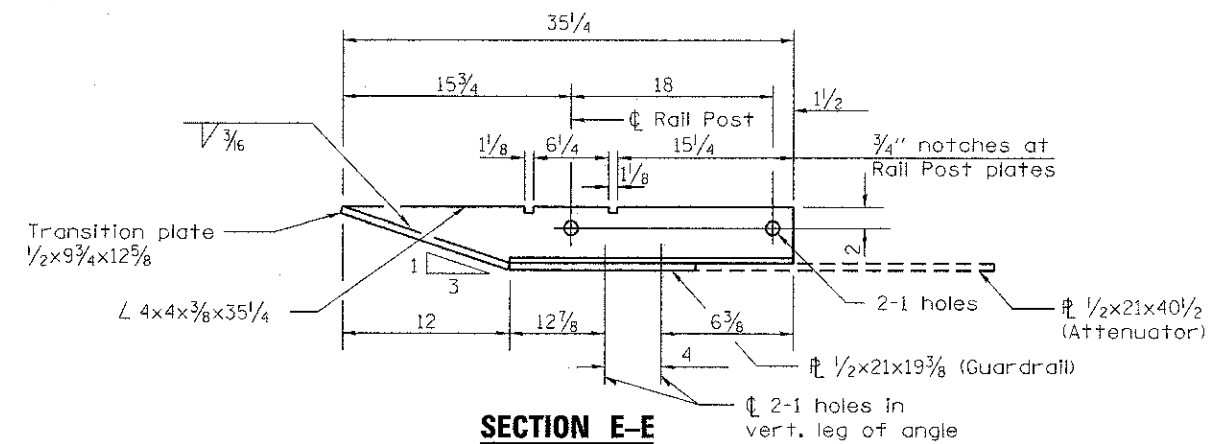
MODIFIED CONNECTION ANGLE

GUARDRAIL CONNECTION (NE & SE)

- Notes:**
- 1) See QuadGuard System Product Manual Dwg. 35-40-15 for Attenuator End Shoe parts list & Impact Attenuator Information. See Special Provisions.
 - 2) See Sheets 15 & 16 of 33 for Wyoming 2-tube details.
 - 3) See Sheet 32 of 33 for Guardrail End Shoe details.



VIEW D-D



SECTION E-E

(Sheet 3 of 3)

FILE NAME = s:\1795-012 Lawrence creek il\ascd\sheet\structure\0563184-001-033.dgn

Bollinger, Lach & Associates, Inc.
ITASCA, ILLINOIS

USER NAME = gonzoio	DESIGNED <i>JMT</i>	REVISED -
PLOT SCALE =	CHECKED <i>JJI</i>	REVISED -
PLOT DATE = 8/16/2012	DRAWN <i>GM</i>	REVISED -
	CHECKED <i>JJI</i>	REVISED -

McHENRY COUNTY
DIVISION OF TRANSPORTATION
LAWRENCE ROAD BRIDGE OVER PISCASAW CREEK

ATTENUATOR CONNECTION & GUARDRAIL CONNECTION DETAILS
STRUCTURE NO. 056-3184
SHEET NO. 33 OF 33 SHEETS

F.A.S. RTE. 0028	SECTION 08-00355-01-BR	COUNTY MCHENRY	TOTAL SHEETS 87	SHEET NO. 65
CONTRACT NO. 63694			ILLINOIS FED. AID PROJECT	