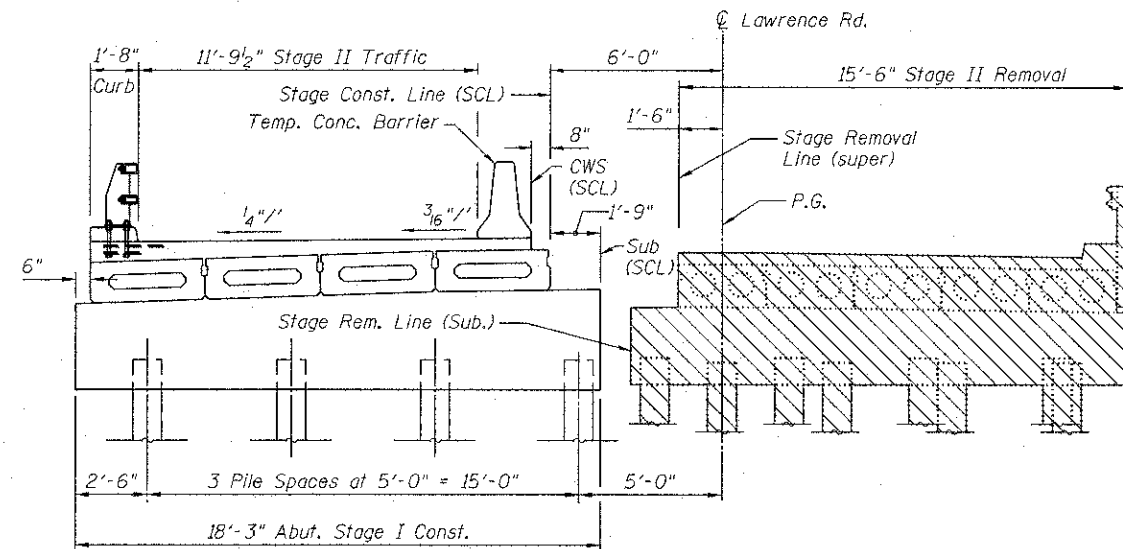
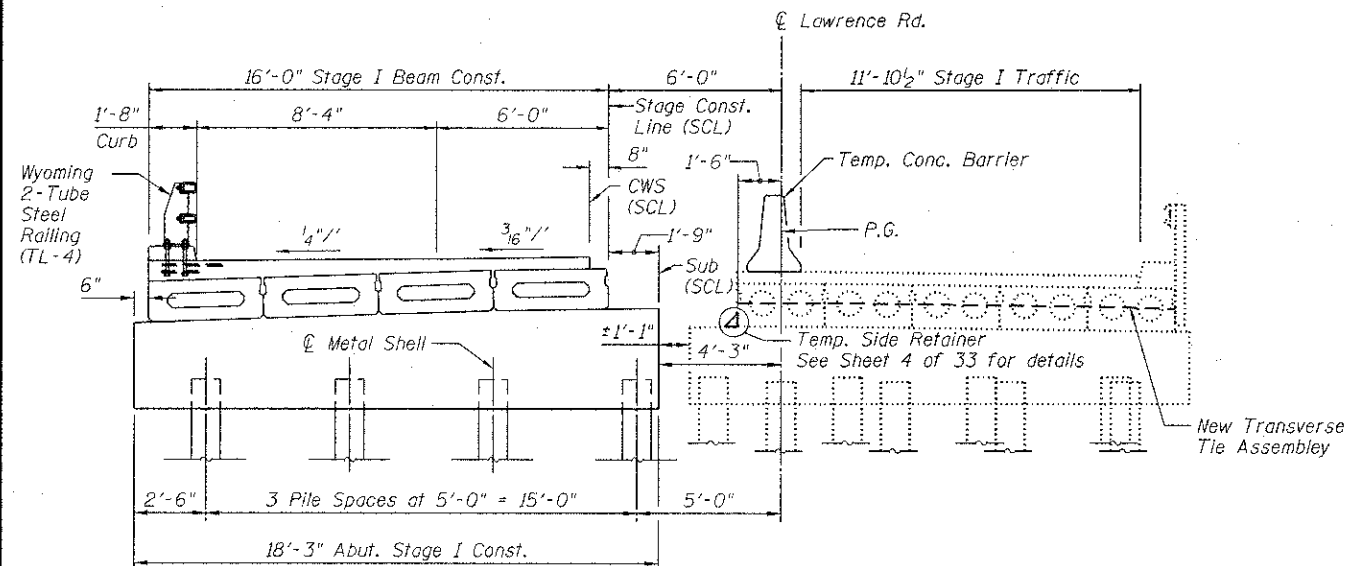


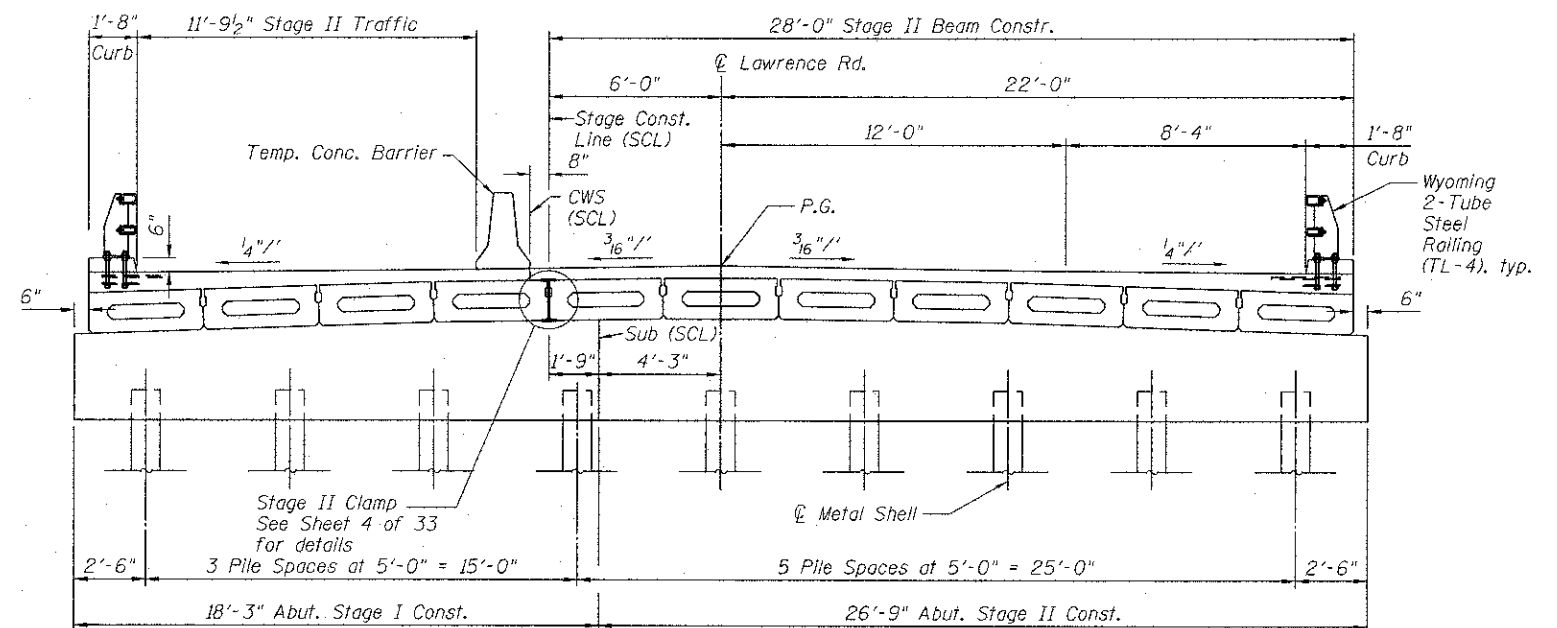
**STAGE I REMOVAL**  
(Looking East)



**STAGE II REMOVAL**  
(Looking East)  
(Proposed East Abutment Shown)



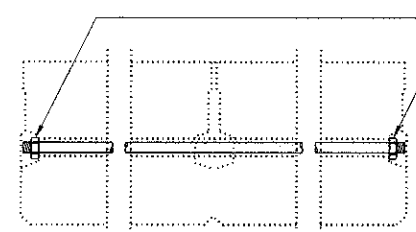
**STAGE I CONSTRUCTION**  
(Looking East)  
(Proposed East Abutment Shown)



**STAGE II CONSTRUCTION**  
(Looking East)  
(Proposed East Abutment Shown)

**LEGEND:**

Removal of Existing Structures



2 Nuts for 1"  $\phi$  Rod, 2 - 3½" x 3½" x ½" Plate washers  
 1-1"  $\phi$  Rod 15'-0" Long - thread each end 6"  
 2 req'd

Note:  
 Remove existing Transverse Tie Assembly during Stage I Removal. Replace with new Transverse Tie Assembly. Cost included with "Removal of Existing Structures".

**NEW TRANSVERSE TIE ASSEMBLY FOR EXISTING BEAMS DURING STAGE I CONSTRUCTION**

Notes:  
 Existing piers and abutments shall be removed in stages. Portions of existing substructure not interfering with new construction shall be removed per Standard Specifications.  
 For Quantities of Temporary Concrete Barrier see Roadway Plans. See Sheet 5 of 33 for Temporary Concrete Barrier Details.  
 Hatched area indicates removal of existing structures. Removal of Existing Bridge Railing and HMA overlay is included with "Removal of Existing Structures".  
 Stage Construction of Proposed Prestressed Concrete beams shall be according to Article 504.06(d) of the Standard Specifications.

FILE NAME = s:\155-012 Lawrence plans\155-012 Lawrence\Structural\0563184-000-403.dwg

 <b>Bollinger, Lach &amp; Associates, Inc.</b> ITASCA, ILLINOIS	USER NAME = genzelo	DESIGNED <i>JMT</i>	REVISED -	<b>McHENRY COUNTY</b> <b>DIVISION OF TRANSPORTATION</b> <b>LAWRENCE ROAD BRIDGE OVER PISCASAW CREEK</b>	<b>STAGE CONSTRUCTION DETAILS I</b> <b>STRUCTURE NO. 056-3184</b> SHEET NO. 3 OF 33 SHEETS	F.A.S. RTE. 0028	SECTION 08-00355-01-BR	COUNTY McHENRY	TOTAL SHEETS 87	SHEET NO. 35
	PLOT SCALE =	CHECKED <i>JJI</i>	REVISED -			CONTRACT NO. 63694	ILLINOIS FED. AID PROJECT			
	PLOT DATE = 8/16/2012	DRAWN <i>GM</i>	REVISED -							
		CHECKED <i>JJI</i>	REVISED -							