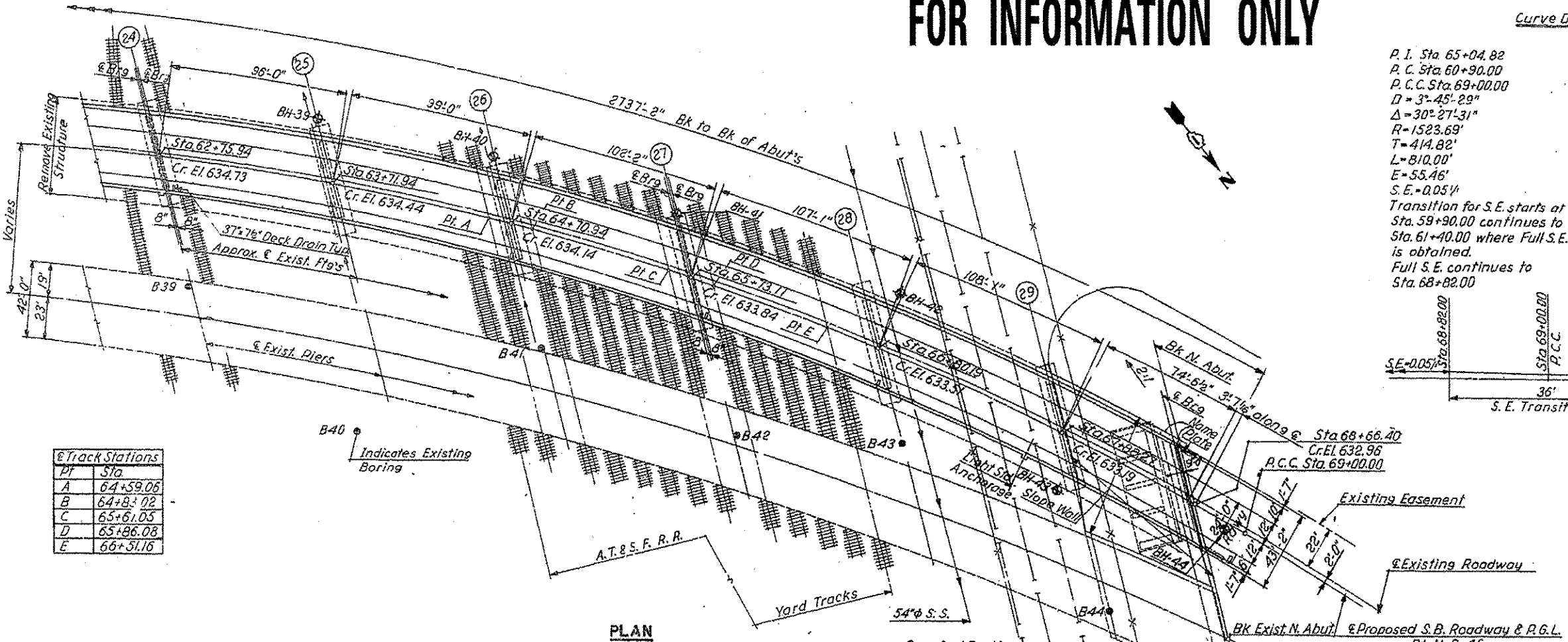
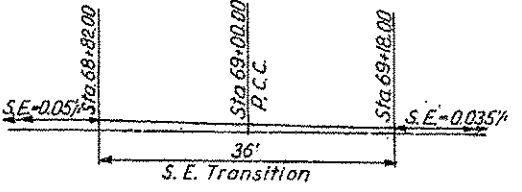


FOR INFORMATION ONLY

Curve Data

P.I. Sta 65+04.82	P.I. Sta. 71+07.45
P.C. Sta. 60+90.00	P.C.C. Sta. 69+00.00
P.C.C. Sta. 69+00.00	P.T. Sta. 73+14.18
$\Delta = 30^{\circ} 45' 29''$	$\Delta = 1^{\circ} 59' 40''$
$\Delta = 30^{\circ} 27' 31''$	$\Delta = 8^{\circ} 14' 49''$
$R = 1523.69'$	$R = 2877.54'$
$T = 414.82'$	$T = 207.45'$
$L = 810.00'$	$L = 414.18'$
$E = 55.46'$	$E = 7.47'$
$S.E. = 0.05\%$	$S.E. = 0.035\%$

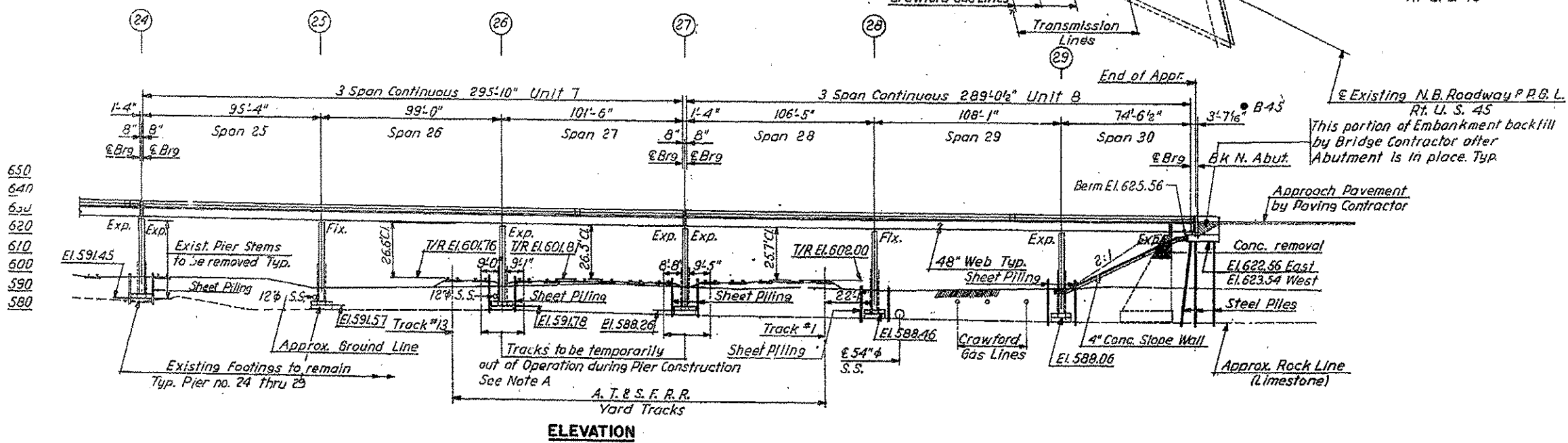
Transition for S.E. starts at Sta. 59+90.00 continues to Sta. 61+40.00 where Full S.E. is obtained. Full S.E. continues to Sta. 68+82.00



PI	Sta
A	64+59.06
B	64+83.02
C	65+61.05
D	65+86.08
E	66+51.16

Indicates Existing Boring

PLAN



ELEVATION