

11-08-2024 LETTING ITEM 036

INDEX OF SHEETS

- 1. COVER SHEET, INDEX OF SHEETS, STATE STANDARDS
- 2. SUMMARY OF QUANTITIES
- 3. SCHEDULE OF QUANTITIES
- 4. LOCATION MAP ROCK ISLAND COUNTY

STATE OF ILLINOIS
DEPARTMENT OF TRANSPORTATION

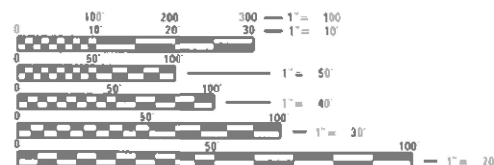
PROPOSED
HIGHWAY PLANS

F.A.I. 280 (I-280)
SECTION D2 BC 2025-05
PROJECT: NHPP-QCEZ(235)
TYPE of IMPROVEMENT: BRIDGE WASHING
ROCK ISLAND COUNTY

C-92-103-24

STATE STANDARDS

- 701101-05 OFF-ROAD OPERATIONS, MULTILANE, 15'(4.5m) TO 24"(600mm) FROM PAVEMENT EDGE
- 701400-12 APPROACH TO LANE CLOSURE, FREEWAY/EXPRESSWAY
- 701406-13 LANE CLOSURE, FREEWAY/EXPRESSWAY, DAY OPERATIONS ONLY
- 701411-09 LANE CLOSURE, MULTILANE, AT ENTRANCE OR EXIT RAMP FOR SPEEDS \geq 45 MPH
- 701901-09 TRAFFIC CONTROL DEVICES
- 720011-01 METAL POSTS FOR SIGNS, MARKERS AND DELINEATORS
- 728001-01 TELESCOPING STEEL SIGN SUPPORT
- 729001-01 APPLICATIONS OF TYPES A & B METAL POSTS (FOR SIGNS & MARKERS)



FULL SIZE PLANS HAVE BEEN PREPARED USING STANDARD ENGINEERING SCALES. REDUCED SIZED PLANS WILL NOT CONFORM TO STANDARD SCALES. IN MAKING MEASUREMENTS ON REDUCED PLANS, THE ABOVE SCALES MAY BE USED.

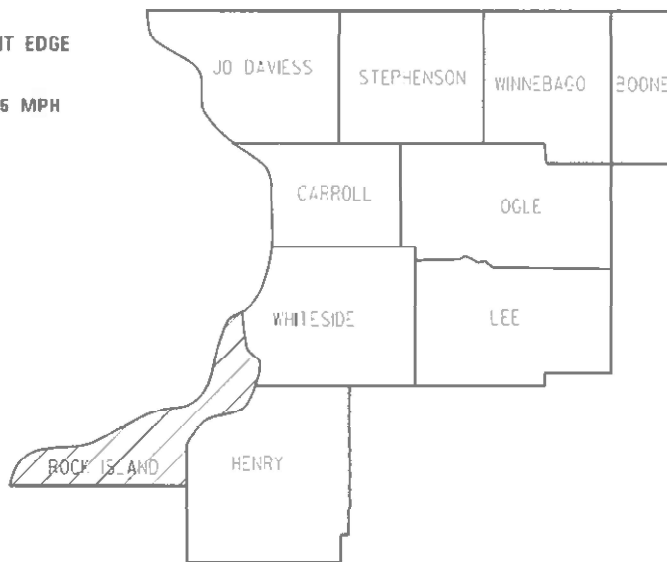
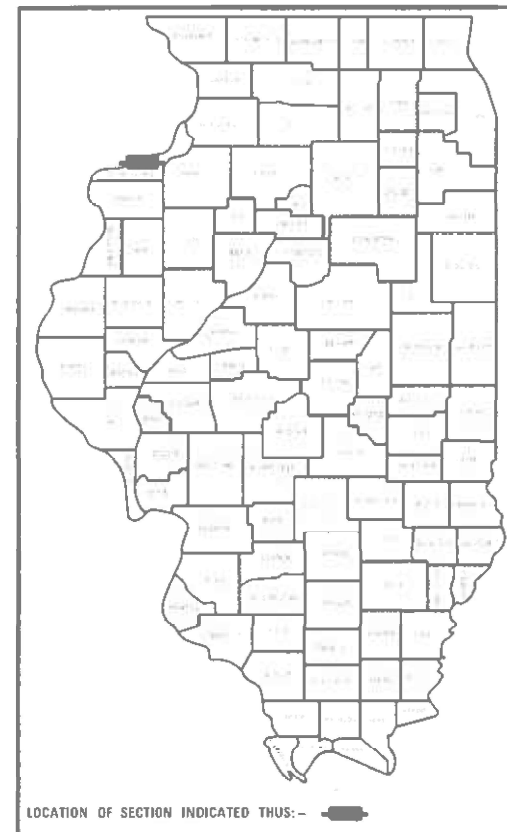
J.U.L.I.E.
JOINT UTILITY LOCATION INFORMATION FOR EXCAVATION
1-800-892-0123
OR 811

PROJECT ENGINEER: DAVID DOSS (815) 284-5416
PROJECT MANAGER: DERRICK LOPEZ (815) 284-5398

CONTRACT NO. 64T38

SECTION	VALUES	DATE	BY
D2 BC 2025-05	ROCK ISLAND	11/08/24	1
CONTRACT NO. 64T38			

D-92-010-25



STATE OF ILLINOIS
DEPARTMENT OF TRANSPORTATION

SUBMITTED Aug 7, 24 2024
Shirley Johnson
REGIONAL ENGINEER

October 4, 2024
San E.A. Elk
ENGINEER OF DESIGN AND ENVIRONMENT

October 4, 2024
James J. [Signature]
DIRECTOR OF HIGHWAYS PROJECT IMPLEMENTATION 13

PRINTED BY THE AUTHORITY
OF THE STATE OF ILLINOIS

SUMMARY OF QUANTITIES

Paycode	Description	Units	Total	ILLINOIS	IOWA
				URBAN NHPP 90% FEDERAL 10% STATE	URBAN 100% STATE
59200101	BRIDGE WASHING NO. 1	EACH	1	0.5	0.5
67100100	MOBILIZATION	L SUM	1	0.5	0.5
70100700	TRAFFIC CONTROL AND PROTECTION, STANDARD 701406	L SUM	1	0.5	0.5
70200100	NIGHTTIME WORK ZONE LIGHTING	L SUM	1	0.5	0.5

 MODEL: P:\default
 FILE NAME: P:\illinois\dot\documents\DOT_0_csa\District_2\ORBD_projects\Operations\Bridges_Section\Bridges_Section\Bridges_Washing_Contract\2025\November_Lettering\Bridges_Washing_Contract\2025\November_Lettering\Bridges_Washing_Contract\2025\November_Lettering\Bridges_Washing_Contract.dwg

USER NAME = David.Doss	DESIGNED -	REVISED -
PLOT SCALE = \$SCALES	DRAWN -	REVISED -
PLOT DATE = 6/25/2024	CHECKED -	REVISED -
	DATE -	REVISED -

STATE OF ILLINOIS
DEPARTMENT OF TRANSPORTATION

SUMMARY OF QUANTITIES			
SCALE:	SHEET	OF	SHEETS

F.A.I. RTE. 280	SECTION D2 BC 2025-05	COUNTY ROCK ISLAND	TOTAL SHEETS 4	SHEET NO. 2
CONTRACT NO. 64T38				
ILLINOIS FED. AID PROJECT				

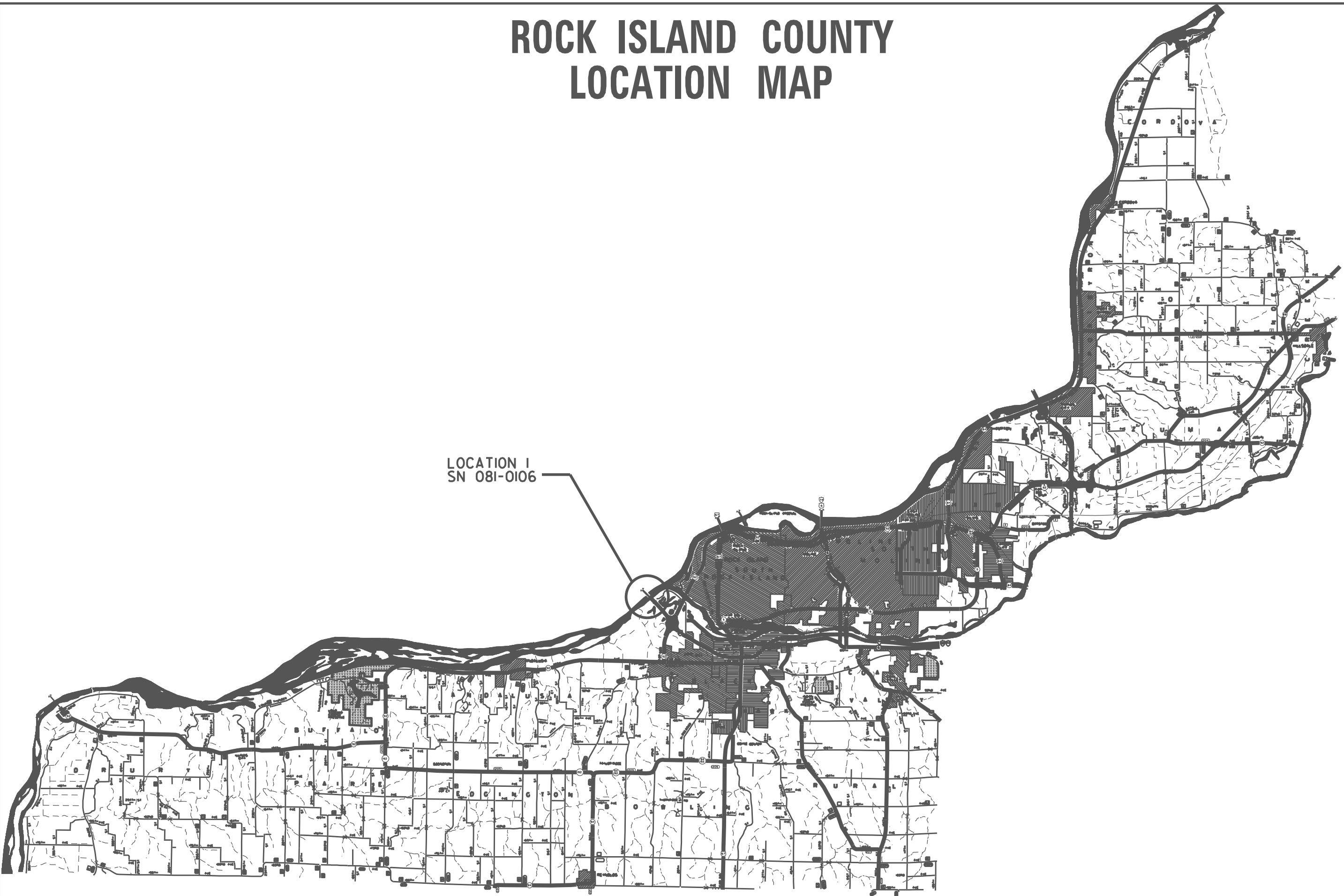
SCHEDULE OF QUANTITIES

	SN	Feature Crossed	Facility Carried	Bridge Location	
BRIDGE WASHING NO. 1	081-0106	Mississippi River	FAI 280 (I-280)	SW of Rock Island	701400 & 701406

MODEL: Default
 FILE: \\nailes-pw\filestore\aw-beckley.com\PIV\DOT\Documents\DOT_0_csr\District_2\ORBD_projects\Operations\Bridges_Section\Bridges_Contract\2025\November_Letring\64T38_Bridge_Washing_L280_over_Mississippi_River_1\CAD\64T38-qt-cour.dwg

USER NAME = David.Doss PLOT SCALE = \$SCALE\$ PLOT DATE = 6/24/2024	DESIGNED - DRAWN - CHECKED - DATE -	REVISED - REVISED - REVISED - REVISED -	STATE OF ILLINOIS DEPARTMENT OF TRANSPORTATION	SCHEDULE OF QUANTITIES	F.A.I. RTE. 280 SECTION D2 BC 2025-05 COUNTY ROCK ISLAND TOTAL SHEETS 4 SHEET NO. 3 CONTRACT NO. 64T38 ILLINOIS FED. AID PROJECT
			SCALE:	SHEET OF SHEETS	STA. TO STA.

ROCK ISLAND COUNTY LOCATION MAP



LOCATION I
SN 081-0106

MODEL: Default
FILE: MAP64T38.dwg
PLOT DATE: 6/24/2024
PLOT SCALE: 1/8"=1'-0"
DRAWN: David.Doss
DESIGNED: David.Doss
CHECKED: David.Doss
DATE: 6/24/2024
STATE OF ILLINOIS
DEPARTMENT OF TRANSPORTATION
ROCK ISLAND COUNTY
LOCATION MAP
SCALE: 1/8"=1'-0"
SHEET OF SHEETS STA. TO STA.
F.A.I. RTE. 280 SECTION D2 BC 2025-05 COUNTY ROCK ISLAND TOTAL SHEETS 4 SHEET NO. 4
CONTRACT NO. 64T38
ILLINOIS FED. AID PROJECT

USER NAME = David.Doss	DESIGNED -	REVISED -
PLOT SCALE = 1/8"=1'-0"	DRAWN -	REVISED -
PLOT DATE = 6/24/2024	CHECKED -	REVISED -
	DATE -	REVISED -

STATE OF ILLINOIS
DEPARTMENT OF TRANSPORTATION

SCALE:	SHEET	OF	SHEETS	STA.	TO	STA.
--------	-------	----	--------	------	----	------

F.A.I. RTE.	SECTION	COUNTY	TOTAL SHEETS	SHEET NO.
280	D2 BC 2025-05	ROCK ISLAND	4	4
CONTRACT NO. 64T38				
ILLINOIS FED. AID PROJECT				