

Doc

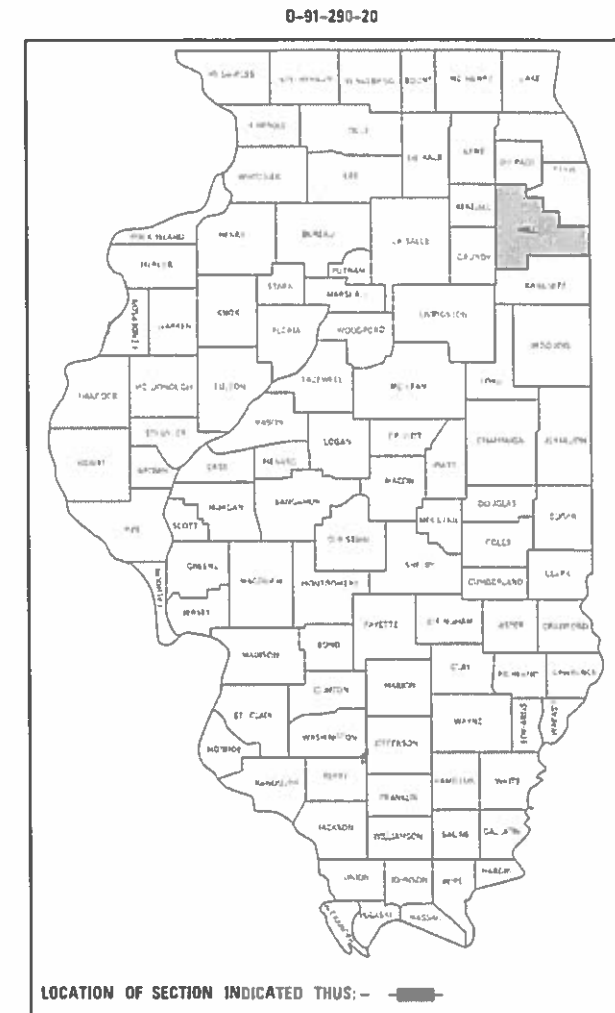
FAI SITE	SECTION	COUNTY	TOTAL SHEETS	SHEET NO.
VAR	2019-139-1	WILL	8	1
		ILLINOIS	CONTRACT NO. 62K13	

STATE OF ILLINOIS
DEPARTMENT OF TRANSPORTATION
DIVISION OF HIGHWAYS
**PROPOSED
HIGHWAY PLANS**

FAI 55 & FAI 80 (I-55 & I-80)
SECTION 2019-139-1
SURVEILLANCE CAMERA REPLACEMENT
WILL COUNTY

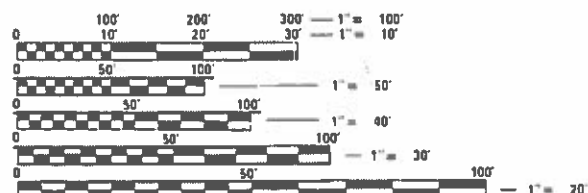
FOR INDEX OF SHEETS, SEE SHEET NO. 2

C-91-073-20



FOR LOCATION MAPS
SEE SHEET NO. 4

VARIOUS TOWNSHIPS



FULL SIZE PLANS HAVE BEEN PREPARED USING STANDARD
ENGINEERING SCALES. REDUCED SIZED PLANS WILL NOT
CONFORM TO STANDARD SCALES. IN MAKING MEASUREMENTS
ON REDUCED PLANS, THE ABOVE SCALES MAY BE USED.

J.U.L.I.E.
JOINT UTILITY LOCATION INFORMATION FOR EXCAVATORS
1-800-892-0123
OR 811

PROJECT ENGINEER: KAMIL KOBYLKA (847) 705-4734
PROJECT MANAGER: LUKASZ POCIECHA (847) 705-4420

CONTRACT NO. 62K13

STATE OF ILLINOIS
DEPARTMENT OF TRANSPORTATION

SUBMITTED Sept 16 2019
Anthony J. [Signature]
REGIONAL ENGINEER

Oct 4 2019
[Signature]
ENGINEER OF DESIGN AND ENVIRONMENT

Oct 4 2019
[Signature]
DIRECTOR OF HIGHWAYS PROJECT IMPLEMENTATION

PRINTED BY THE AUTHORITY
OF THE STATE OF ILLINOIS

INDEX OF SHEETS

SHT NO.	DESCRIPTION
1	COVER SHEET
2	INDEX OF SHEETS, HIGHWAY STANDARDS, AND GENERAL NOTES
3	SUMMARY OF QUANTITIES
4	LOCATION MAP
5	LOCATION MAP INDEX AND SCHEDULE OF QUANTITIES
6	ENTRANCE AND EXIST RAMP CLOSURE DETAILS (TC - 8)
7	SINGLE LANE WEAVE AND MULTI-LANE WEAVE (TC - 9)
8	PARTIAL RAMP & SHOULDER CLOSURE DETAIL (TC - 17)

HIGHWAY STANDARDS

STD. NO.	TITLE
701106-02	OFF-ROAD OPERATIONS, MULTILANE, MORE THAN 15' AWAY
701400-09	APPROACH TO LANE CLOSURE, FREEWAY / EXPRESSWAY
701401-12	LANE CLOSURE, FREEWAY / EXPRESSWAY
701411-09	LANE CLOSURE, MULTILANE, AT ENTRANCE OR EXIT RAMP, FOR SPEED= 45MPH
701428-01	TRAFFIC CONTROL SETUP AND REMOVAL FREEWAY / EXPRESSWAY
701901-08	TRAFFIC CONTROL DEVICES

GENERAL NOTES

THE CONTRACTOR SHALL CONTACT THE TRAFFIC CONTROL SUPERVISOR AT (847) 705-4470 72 HOURS IN ADVANCE OF BEGINNING WORK.

IT SHALL BE THE CONTRACTOR'S RESPONSIBILITY TO VERIFY ALL DIMENSIONS AND CONDITIONS EXISTING IN THE FIELD PRIOR TO ORDERING MATERIALS AND BEGINNING CONSTRUCTION.

THE CONTRACTOR SHALL COORDINATE ANY CONFLICTS WITH THE UTILITY COMPANIES AND THE RESIDENT ENGINEER BEFORE ORDERING MATERIALS.

THE CONTRACTOR SHALL COORDINATE CONSTRUCTION ACTIVITIES WITH UTILITY COMPANIES, LOCAL GOVERNMENT AGENCIES AND IDOT.

ALL DAMAGE TO MOWED LAWNS SHALL BE REPLACED WITH AN APPROVED SOD, AND ALL DAMAGE TO UNMOWED FIELDS SHALL BE SEEDED IN ACCORDANCE WITH STANDARD SPECIFICATIONS 252 AND 250 RESPECTIVELY.

MODEL: D:\dgn\...
 FILE: \name\...
 ...

USER NAME = koby/kaka	DESIGNED - KK	REVISED -
	DRAWN - KK	REVISED -
PLOT SCALE = 100,0000 ' / in.	CHECKED - LP	REVISED -
PLOT DATE = 9/16/2019	DATE - 8/15/2019	REVISED -

**STATE OF ILLINOIS
 DEPARTMENT OF TRANSPORTATION**

INDEX OF SHEETS, HIGHWAY STANDARDS & GENERAL NOTES

SCALE: SHEET OF SHEETS STA. TO STA.

F.A. RTE.	SECTION	COUNTY	TOTAL SHEETS	SHEET NO.
VAR	2019-139-I	WILL	8	2
			CONTRACT NO. 62K13	
		ILLINOIS	FED. AID PROJECT	

CONSTRUCTION CODE

CODE NO.	ITEM	UNIT	TOTAL QUANTITY	100% STATE	CONSTRUCTION CODE					
				WILL COUNTY						
				SURVEILLANCE 0021 URBAN						
67000400	ENGINEER'S FIELD OFFICE, TYPE A	CAL MO	6	6						
67100100	MOBILIZATION	L SUM	1	1						
X1400390	REPLACE EXISTING CCTV CAMERA AND LOWERING DEVICE, 80 FT. M.H.	EACH	28	28						
X1400391	REPLACE EXISTING CCTV CAMERA AND LOWERING DEVICE, 50 FT. M.H.	EACH	3	3						
X1400392	REPLACE EXISTING CCTV CAMERA, BRIDGE MOUNT	EACH	2	2						
X1400393	REPLACE EXISTING CCTV CAMERA, POLE MOUNT, 50 FT. M.H.	EACH	11	11						
X1400179	CLOSED CIRCUIT DOME TELEVISION CAMERA, HD	EACH	44	44						
X7011015	TRAFFIC CONTROL AND PROTECTION (EXPRESSWAYS)	L SUM	1	1						

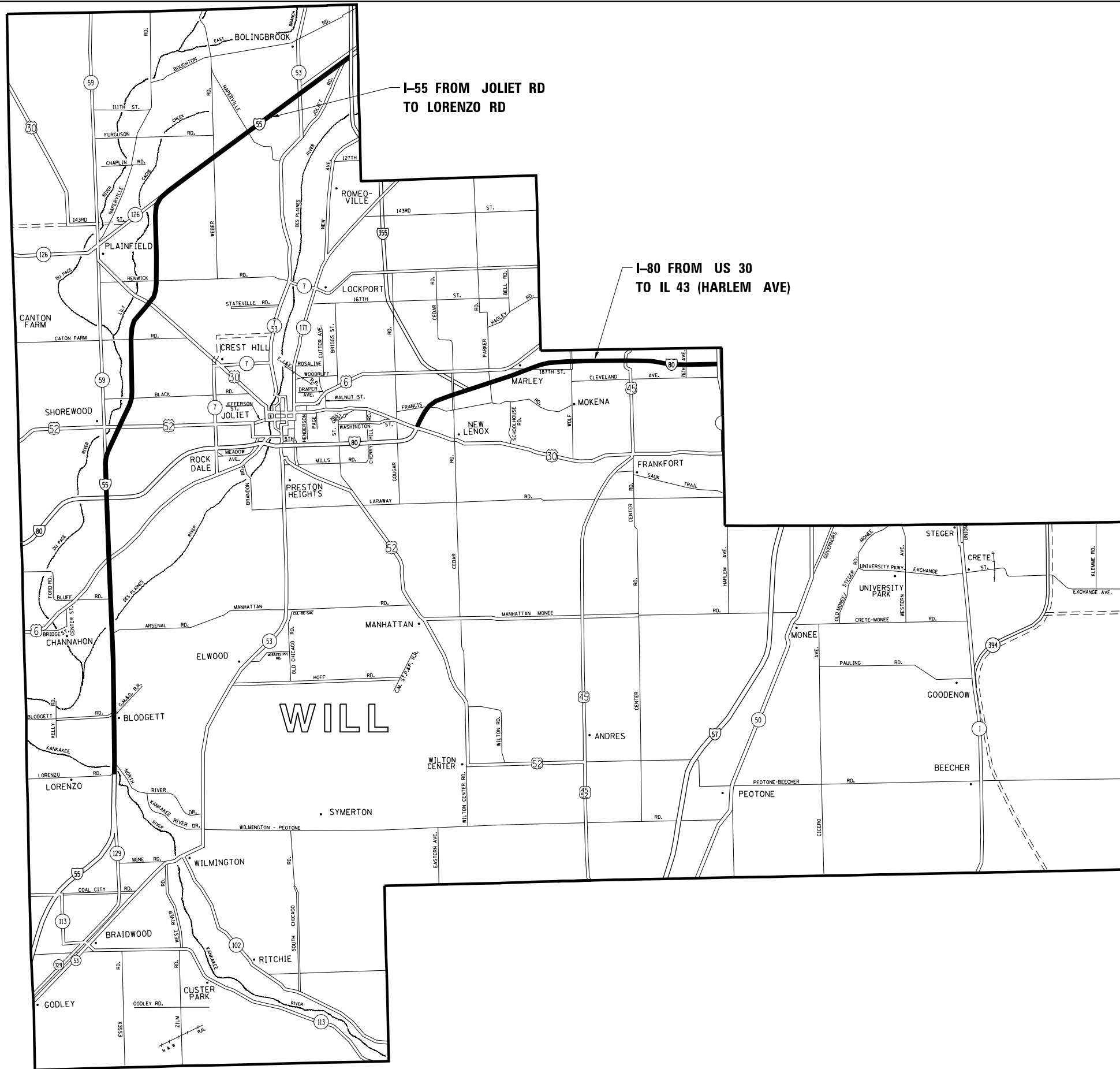
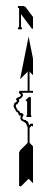
MODEL: D:\dgn\...
 FILE: ...
 ...

USER NAME = koby/kaka	DESIGNED - KK	REVISED -
	DRAWN - KK	REVISED -
PLOT SCALE = 100.0000' / in.	CHECKED - LP	REVISED -
PLOT DATE = 9/16/2019	DATE - 8/15/2019	REVISED -

**STATE OF ILLINOIS
DEPARTMENT OF TRANSPORTATION**

SUMMARY OF QUANTITIES			
SCALE:	SHEET	OF	SHEETS
	STA.	TO	STA.

F.A. RTE.	SECTION	COUNTY	TOTAL SHEETS	SHEET NO.
VAR	2019-139-I	WILL	8	3
			CONTRACT NO. 62K13	
		ILLINOIS	FED. AID PROJECT	



MODEL: D:\dtp\...
 FILE: ...
 ...

USER NAME = koby/kaka	DESIGNED - KK	REVISED -
	DRAWN - KK	REVISED -
PLOT SCALE = 100,0000' / in.	CHECKED - LP	REVISED -
PLOT DATE = 9/16/2019	DATE - 8/15/2019	REVISED -

STATE OF ILLINOIS
DEPARTMENT OF TRANSPORTATION

LOCATION MAP
WILL COUNTY

SCALE: SHEET OF SHEETS STA. TO STA.

F.A. RTE.	SECTION	COUNTY	TOTAL SHEETS	SHEET NO.
VAR	2019-139-I	WILL	8	4
CONTRACT NO. 62K13				
ILLINOIS FED. AID PROJECT				

MODEL: D:\dft\11...
 FILE NAME: S:\WP\Design\KIL\House-Design\C914073-20\062\13-Surve\Illinc-Pro\sect-180-and-155\09-16-19-Red\Illinc\CAD\62K13.dgn

ROUTE	DESIGNATION	CROSS STREET	LOWERING DEVICE	HEIGHT (FT)	REPLACE EXISTING CCTV CAMERA AND LOWERING DEVICE, 80 FT. M.H.	REPLACE EXISTING CCTV CAMERA AND LOWERING DEVICE, 50 FT. M.H.	REPLACE EXISTING CCTV CAMERA, BRIDGE MOUNT	REPLACE EXISTING CCTV CAMERA, POLE MOUNT, 50 FT. M.H.	CLOSED CIRCUIT DOME TELEVISION CAMERA, HD
I-55	ST24A	JOLIET ROAD	YES	80	1				1
I-55	ST25	BETWEEN IL53 AND JOLIET ROAD	YES	80	1				1
I-55	ST26	IL53	YES	80	1				1
I-55	ST27	EAST OF SCHMIDT ROAD	YES	80	1				1
I-55	ST28	WEIGH STATION	YES	80	1				1
I-55	ST29	WINDHAM PARKWAY	YES	80	1				1
I-55	ST30	WEBER ROAD	YES	80	1				1
I-55	ST30A	WEBER ROAD	YES	80	1				1
I-55	ST31	BETWEEN 135TH AND WEBER RD.	YES	80	1				1
I-55	ST32	IL126	YES	80	1				1
I-55	ST32A	IL126	YES	80	1				1
I-55	ST34	LOCKPORT ROAD	YES	80	1				1
I-55	ST35	RENWICK ROAD	YES	80	1				1
I-55	ST35A	US30 (EJ&E RR)	YES	80	1				1
I-55	ST36	US30	YES	80	1				1
I-55	ST36A	US30	YES	80	1				1
I-55	ST37	BETWEEN US30 AND CATON FARM RD.	YES	80	1				1
I-55	ST37A	CATON FARM ROAD	YES	80	1				1
I-55	ST38	SOUTH OF CATON FARM ROAD	YES	80	1				1
I-55	ST39	NORTH OF BLACK ROAD	YES	80	1				1
I-55	ST40	NORTH OF JEFFERSON STREET	YES	80	1				1
I-55	ST40A	JEFFERSON STREET	YES	80	1				1
I-55	ST42	SEIL ROAD	YES	80	1				1
I-55	ST43	NORTH EAST QUAD., I-80 INTERCHANGE	YES	80	1				1
I-55	ST43A	SOUTH EAST QUAD., I-80 INTERCHANGE	YES	80	1				1
I-55	ST44	MAINT YARD	YES	80	1				1
I-55	ST45	US6	YES	80	1				1
I-55	ST46	SOUTH OF US6	YES	80	1				1
I-55	ST47	NORTH OF DES PLAINES RIVER	NO	50				1	1
I-55	ST47A	BRIDGE SECURITY DES PLAINES RIVER, NORTH PIER	NO				1		1
I-55	ST47B	BRIDGE SECURITY DES PLAINES RIVER, NORTH PIER	NO				1		1
I-55	ST48	SOUTH OF DES PLAINES RIVER	NO	50				1	1
I-55	ST51	RIVER ROAD	NO	50				1	1
I-55	ST52	LORENZO ROAD	NO	50				1	1
I-80	IE14	HARLEM AVE	NO	50				1	1
I-80	IE15	W/O 80TH AVE	NO	50				1	1
I-80	IE17	W/O US45	NO	50				1	1
I-80	IE18	104TH AVE	YES	50	1				1
I-80	IE20	116TH (ACROSS FROM WT. STA.)	NO	50				1	1
I-80	IE21	187TH ST.	NO	50				1	1
I-80	IE22	PARKER RD.	YES	50		1			1
I-80	IE23	E/O I-355	NO	50				1	1
I-80	IE23A	W/O I-355 (MICHAEL LN)	NO	50				1	1
I-80	IE24	FRANCIS RD.	YES	50	1				1

USER NAME = koby/kaka	DESIGNED - KK	REVISED -
	DRAWN - KK	REVISED -
PLOT SCALE = 100,0000' / in.	CHECKED - LP	REVISED -
PLOT DATE = 9/16/2019	DATE - 8/15/2019	REVISED -

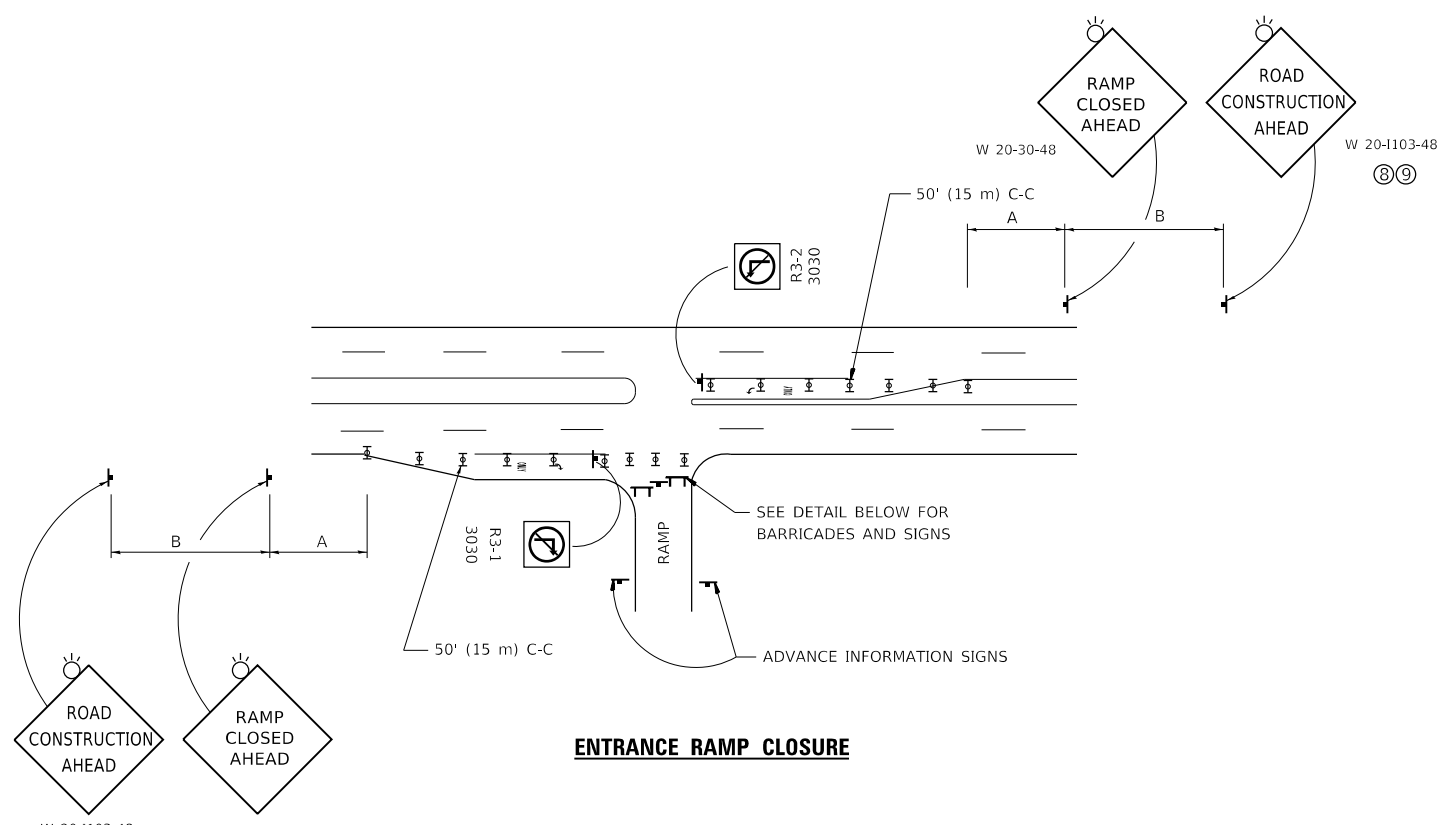
**STATE OF ILLINOIS
 DEPARTMENT OF TRANSPORTATION**

**LOCATION MAP INDEX AND
 SCHEDULE OF QUANTITIES**

SCALE: SHEET OF SHEETS STA. TO STA.

F.A. RTE.	SECTION	COUNTY	TOTAL SHEETS	SHEET NO.
VAR	2019-139-I	WILL	8	5
			CONTRACT NO. 62K13	
		ILLINOIS	FED. AID PROJECT	

MODEL: D:\dtp\...
 FILE: 2019-139-1\3-Surrenderance-Design\C914073-20-NOE\X13-Surrenderance-Design\Project\80-and-155\09-16-19-Redlines\CAD\62K13.dgn

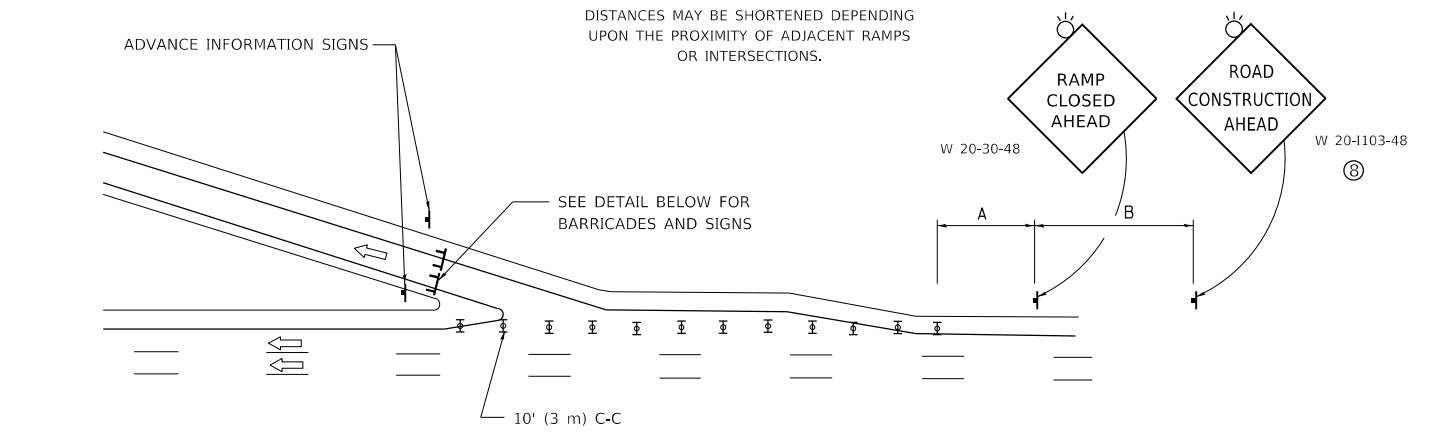


ENTRANCE RAMP CLOSURE

SIGN SPACING TABLE

FACILITY	DISTANCE BETWEEN SIGNS	
	A	B
EXPRESSWAY >24 HOURS	1000' (300 m)	1500' (450 m)
EXPRESSWAY ≤24 HOURS	500' (150 m)	500' (150 m)
ARTERIAL 55 MPH	500' (150 m)	500' (150 m)
ARTERIAL 50-45 MPH	350' (100 m)	350' (100 m)
ARTERIAL <45 MPH	200' (60 m)	200' (60 m)

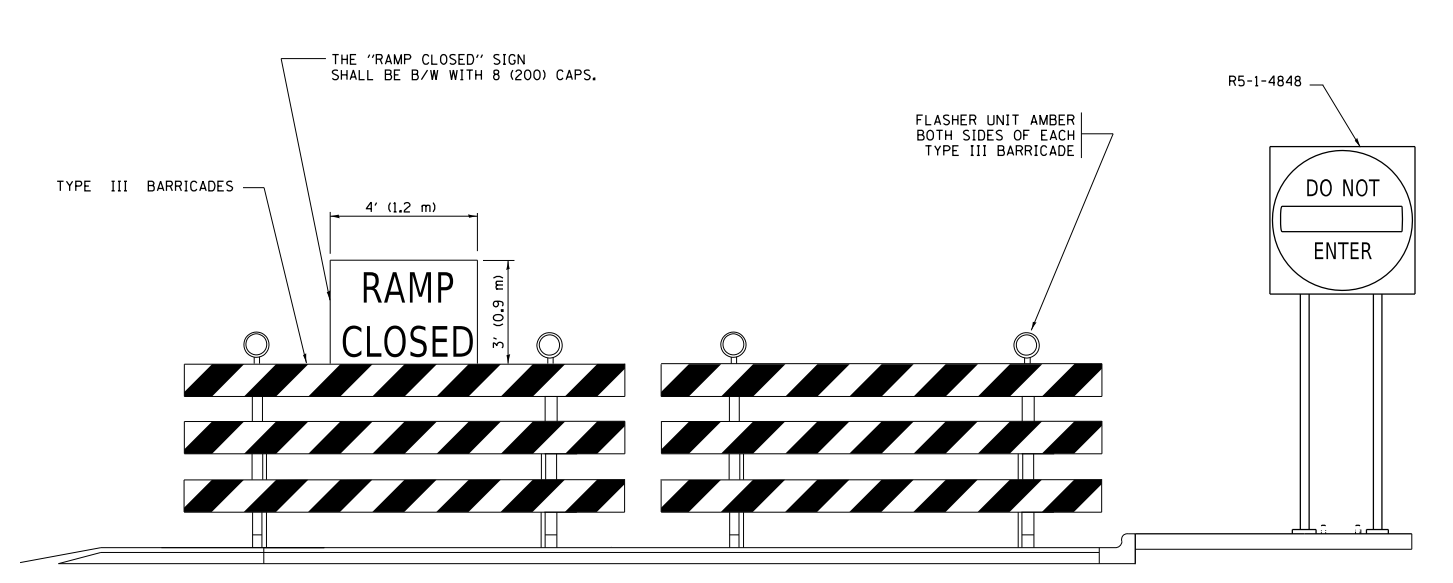
DISTANCES MAY BE SHORTENED DEPENDING UPON THE PROXIMITY OF ADJACENT RAMPS OR INTERSECTIONS.



EXIT RAMP CLOSURE

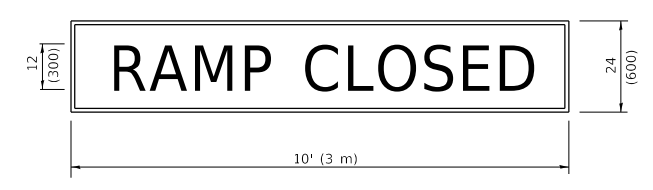
SYMBOLS

- ☐ TYPE II BARRICADE OR DRUM
- ☐ TYPE III BARRICADE WITH 2 FLASHING LIGHTS



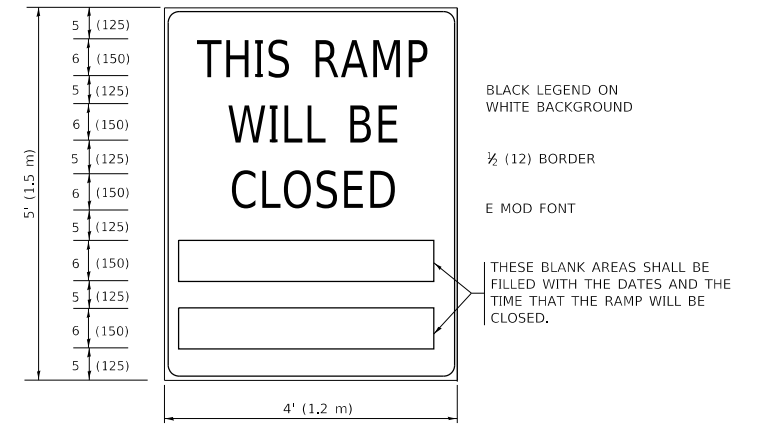
DETAIL FOR REQUIRED BARRICADES & SIGNS

RAMP CLOSURE ADVANCE WARNING SIGN



BLACK LEGEND ON ORANGE BACKGROUND MOUNTED DIAGONALLY
 E MOD FONT
 1 (25) BORDER
 THESE SIGNS ARE REQUIRED ON ALL THE EXIT GUIDE SIGNS FOR EXIT RAMPS THAT WILL BE CLOSED FOR MORE THAN FOUR (4) CONSECUTIVE DAYS.

RAMP CLOSURE ADVANCE INFORMATION SIGN



THESE SIGNS ARE REQUIRED ON BOTH SIDES OF THE RAMP, MINIMUM OF 1 WEEK IN ADVANCE OF THE CLOSURE.
 THESE SIGNS SHALL BE FABRICATED AND PAID FOR ACCORDING TO THE TEMPORARY INFORMATION SIGNING SPECIAL PROVISION

GENERAL NOTES:

- ① CONES MAY BE SUBSTITUTED FOR DRUMS OR TYPE II BARRICADES DURING DAY OPERATIONS. CONES SHALL BE A MINIMUM OF 28 (700) HIGH.
- ② VERTICAL BARRICADES SHALL NOT BE USED FOR RAMP CLOSURES.
- ③ A FLAGGER SHALL BE POSITIONED AT EACH CLOSED RAMP THAT IS OPEN TO CONSTRUCTION VEHICLES, PRECEDED BY A W20-7 FLAGGER WARNING SIGN.
- ④ ALL ROUTE MARKERS AND TRAILBLAZER ASSEMBLIES WHICH DIRECT MOTORISTS TO A CLOSED ENTRANCE RAMP SHALL BE COVERED WHEN THE RAMP IS CLOSED FOR MORE THAN FOUR (4) DAYS.
- ⑤ THE SIGNING AND BARRICADING WHICH IS REQUIRED BY THIS DETAIL SHALL BE INCLUDED IN THE COST OF TRAFFIC CONTROL AND PROTECTION (EXPRESSWAYS).
- ⑥ AUTHORIZATION FROM THE DISTRICT'S BUREAU OF TRAFFIC IS REQUIRED FOR ALL RAMP CLOSURES.
- ⑦ THE RAMP CLOSURE ADVANCE INFORMATION SIGNS SHALL BE ERECTED IF THE CLOSURE TIME EXCEEDS TWENTY-FOUR (24) HOURS. ADDITIONAL ADVANCE WARNING SIGNS ON EXIT GUIDE SIGNING WILL BE REQUIRED FOR EXIT RAMP CLOSURES THAT EXCEED FOUR (4) DAYS IN LENGTH.
- ⑧ ROAD CONSTRUCTION AHEAD SIGNS MAY BE OMITTED WHEN THIS DETAIL IS USED IN CONJUNCTION WITH OTHER TRAFFIC CONTROL THAT ALREADY INCLUDES A ROAD CONSTRUCTION AHEAD SIGN.
- ⑨ ARTERIAL ROAD CONSTRUCTION AHEAD SIGNS SHALL BE INSTALLED ON THE LEFT SIDE OF TRAFFIC IF THE MEDIAN IS MORE THAN 10 FT WIDE.

ALL DIMENSIONS ARE IN INCHES (MILLIMETERS) UNLESS OTHERWISE SHOWN.

USER NAME = koby/kaka	DESIGNED - D.W.S.	REVISED - S.P.B._01-07
PLOT SCALE = 100.0000' / in.	CHECKED -	REVISED - S.P.B._12-09
PLOT DATE = 9/16/2019	DATE - 02-83	REVISED - M.D._06-13
		REVISED - M.D._01-18

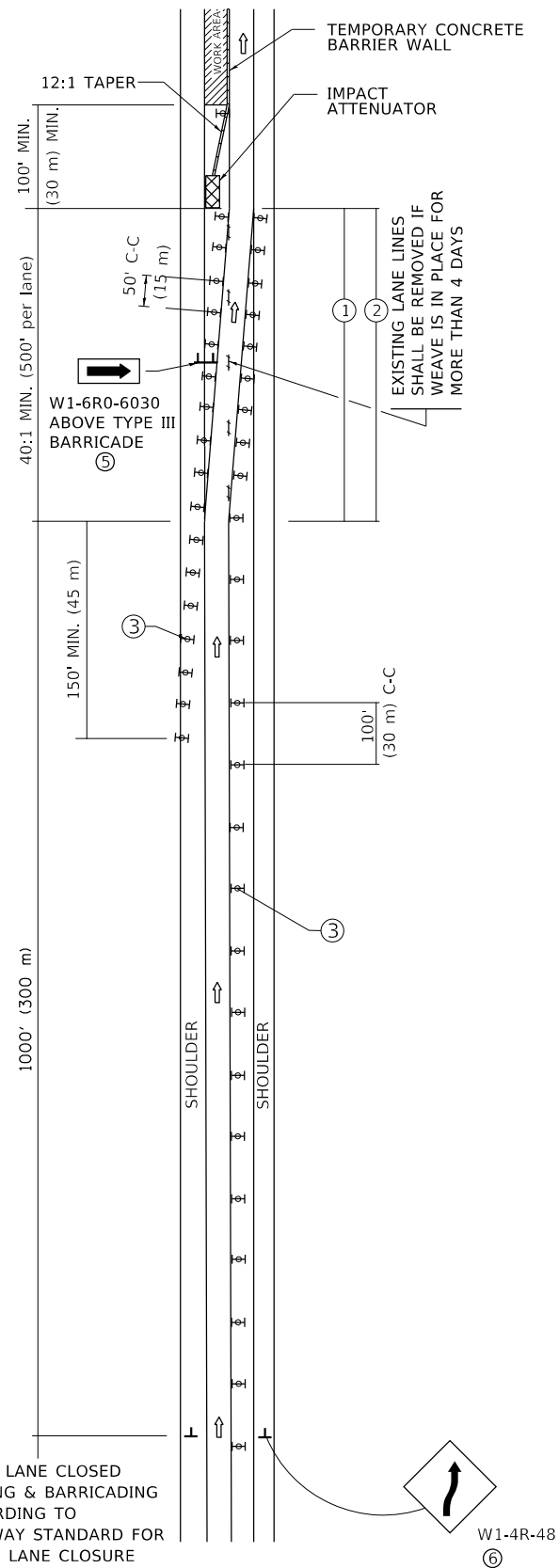
**STATE OF ILLINOIS
 DEPARTMENT OF TRANSPORTATION**

**ENTRANCE_AND_EXIT_RAMP
 CLOSURE_DETAILS**

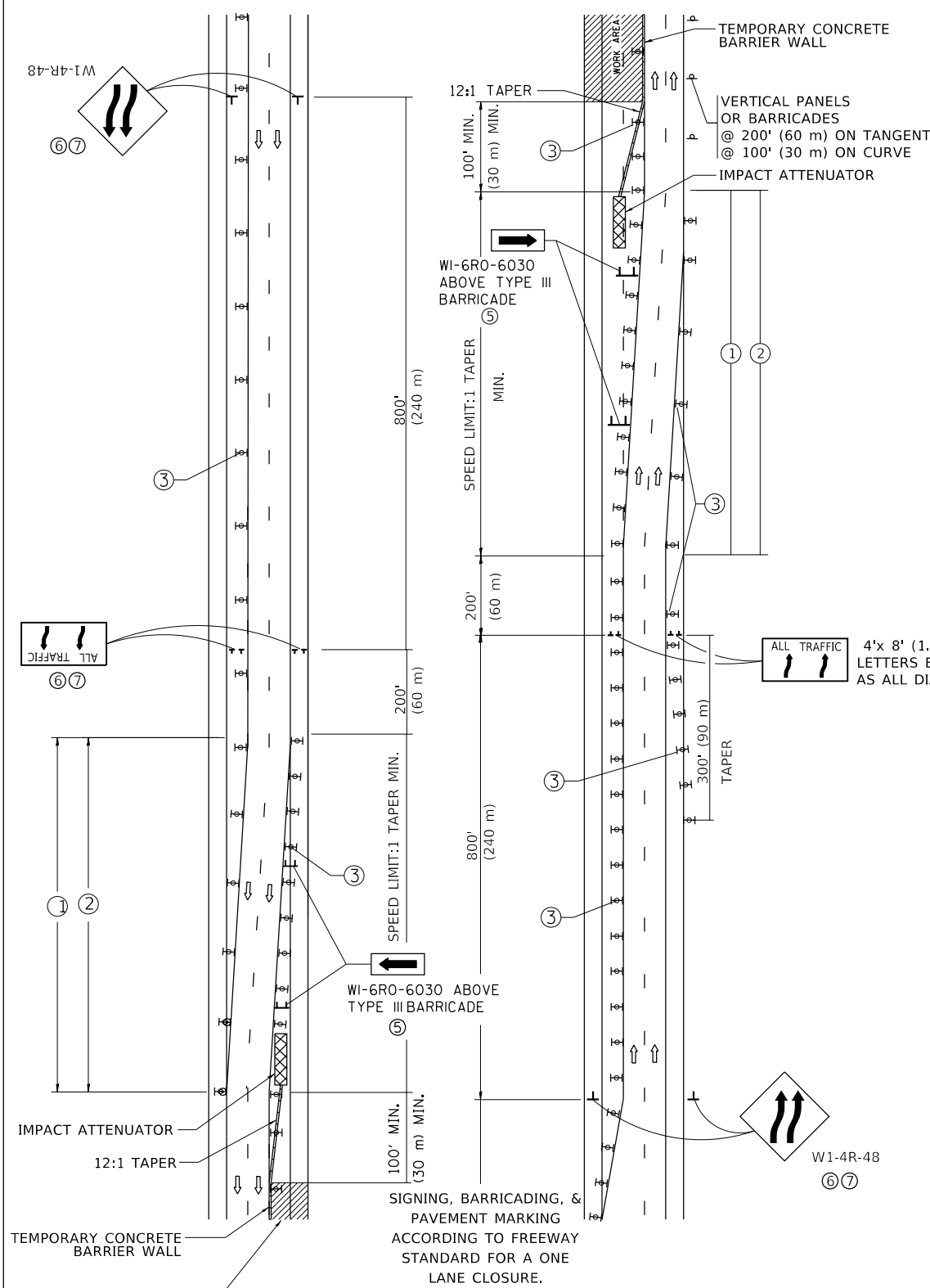
SCALE: NONE SHEET 1 OF 1 SHEETS STA. TO STA.

F.A. RTE.	SECTION	COUNTY	TOTAL SHEETS	SHEET NO.
	2019-139-1	WILL	8	6
TC-08			CONTRACT NO. 62K13	
ILLINOIS		FED. AID PROJECT		

SINGLE LANE WEAVE



MULTI-LANE WEAVE



GENERAL NOTES:

- ① EXISTING CONFLICTING PAVEMENT MARKING LINES SHALL BE REMOVED. PAVEMENT MARKING REMOVAL SHALL NOT BE REQUIRED FOR SINGLE LANE WEAVES UNDER 4 DAYS IN DURATION.
- ② CONTINUOUS REFLECTIVE TEMPORARY PAVEMENT MARKING TAPE SHALL BE PLACED THROUGHOUT THE TAPER AND FOR 300' (90 m) ALONG SIDE THE WORK AREA WHERE THE CLOSURE TIME IS GREATER THAN FOURTEEN DAYS. THE LEFT EDGE LINE SHALL BE YELLOW AND THE RIGHT EDGE LINE SHALL BE WHITE. FOR MULTI-LANE WEAVES LANE LINES SHALL BE 5 INCH, 10'-30' (3 m-9 m) SKIP DASH, WHITE.
- ③ PLASTIC DRUMS WITH STEADY BURN LIGHTS AT 50' (15 m) C-C SPACING IN TAPERS AND 100' (30 m) C-C SPACING IN TANGENTS.
- ④ ALL SIGNS SHALL BE POST MOUNTED IF THE CLOSURE TIME EXCEEDS FOUR DAYS.
- ⑤ TYPE III BARRICADES MAY BE OMITTED FOR SINGLE-LANE WEAVES UNDER 24-HOURS IN DURATION. W1-6 SIGNS WILL STILL BE REQUIRED. IF THE WIDTH OF OFFSET IS LESS THAN 6' THEN THE TYPE III BARRICADE WITH ATTACHED ARROW SIGN PANEL CAN BE ELIMINATED IN THE TAPER AREAS.
- ⑥ WHEN THE LENGTH OF THE SHIFTED SEGMENT (DISTANCE BETWEEN WEAVE POINTS) IS LESS THAN 1500', DOUBLE REVERSE CURVE SIGNS (W24-1) SHOULD BE USED INSTEAD OF THE REVERSE CURVE (W1-4) SIGNS. ARROWS ON THE 4'X8' "ALL TRAFFIC" SIGNS SHALL BE THE SAME SHAPE.
- ⑦ THE NUMBER OF ARROWS ON THESE SIGNS SHALL MATCH THE NUMBER OF LANES OPEN TO TRAFFIC.

SYMBOLS

- DIRECTION OF TRAFFIC
- WORK AREA
- SIGN ON PORTABLE OR PERMANENT SUPPORT
- TYPE II BARRICADE OR DRUM WITH MONO-DIRECTIONAL STEADY BURNING LIGHT
- TEMPORARY CONCRETE BARRIER WALL
- IMPACT ATTENUATOR
- W1-4R-48
- W24-1-48

ALL DIMENSIONS ARE IN INCHES (MILLIMETERS) UNLESS OTHERWISE SHOWN

MODEL: D:\dft\... FILE NAME: S:\WP\Design\KIN\House-Design\Cs91\073-20\02\X13-Survey\Incar-Pro\sect-180-and-155\09-16-19-Revised\09\CAD\62K13.dgn

USER NAME = koby/kaka	DESIGNED - D,W,S.	REVISED - J,A,F. 02-06
	DRAWN -	REVISED - S,P,B. 01-07
PLOT SCALE = 100,0000' / in.	CHECKED -	REVISED - S,P,B. 12-09
PLOT DATE = 9/16/2019	DATE - 02-87	REVISED - M,D. 06-13

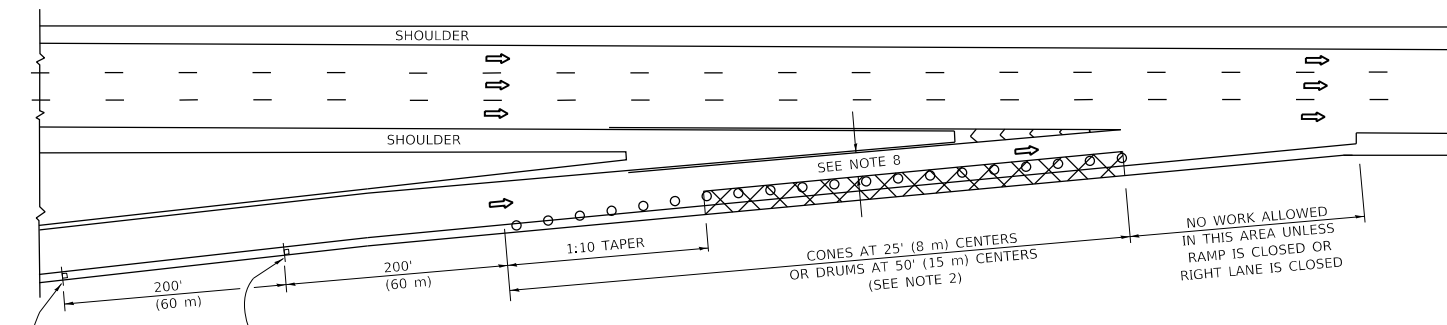
STATE OF ILLINOIS
DEPARTMENT OF TRANSPORTATION

TRAFFIC CONTROL DETAILS FOR
FREEWAY SINGLE & MULTI-LANE WEAVE

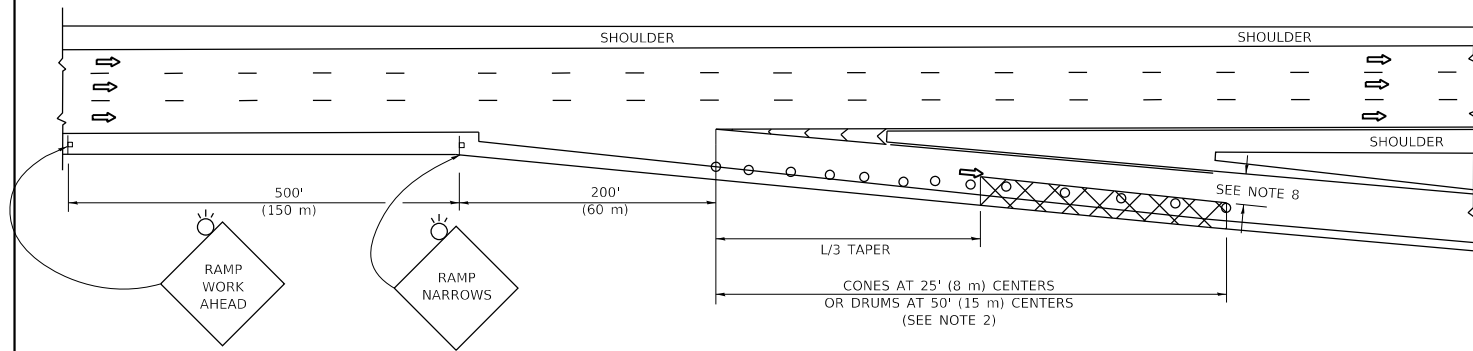
SCALE: NONE SHEET 1 OF 1 SHEETS STA. TO STA.

F.A. RTE.	SECTION	COUNTY	TOTAL SHEETS	SHEET NO.
	2019-139-1	WILL	8	7
TC-09		CONTRACT NO. 62K13		
ILLINOIS FED. AID PROJECT				

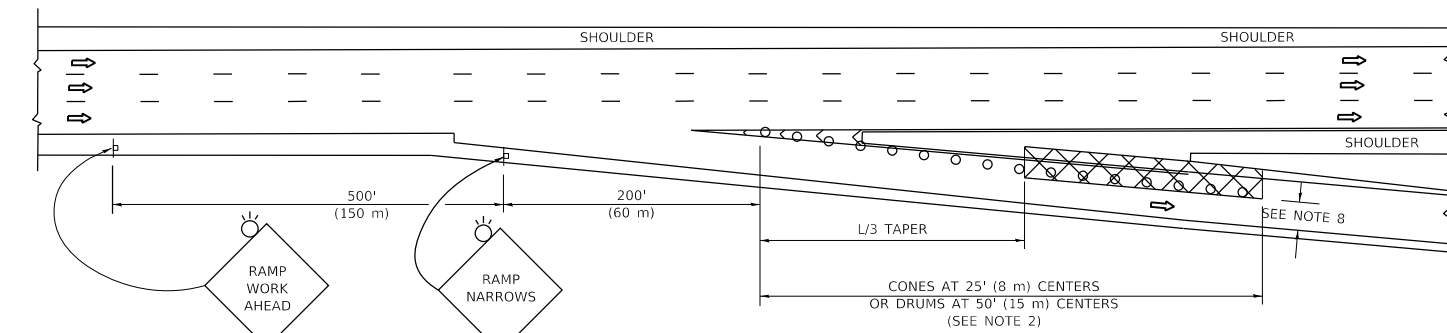
PARTIAL RAMP CLOSURE DETAILS



TYPICAL ENTRANCE RAMP



TYPICAL EXIT RAMP



TYPICAL EXIT RAMP

SYMBOLS

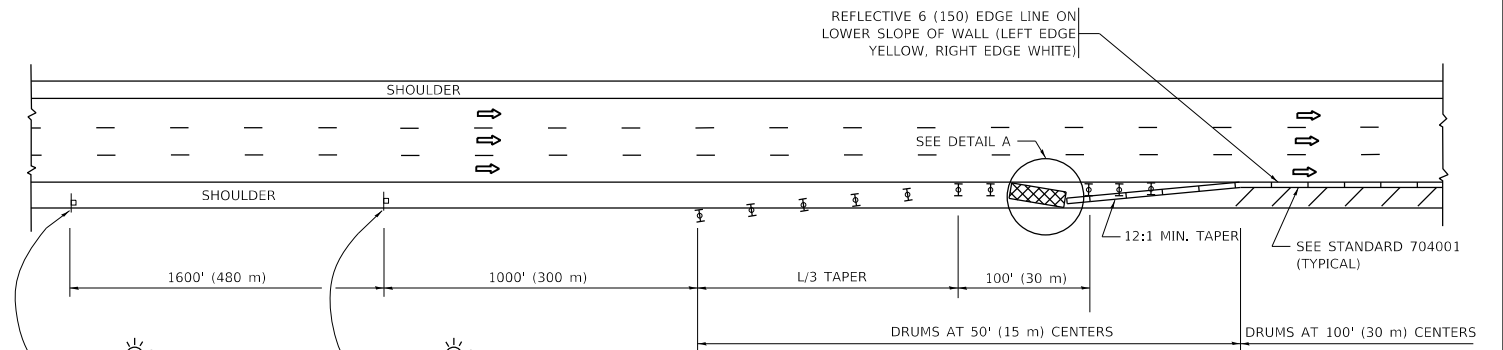
- ACTIVE WORK AREA
- SIGN ON PORTABLE OR PERMANENT SUPPORT
- FLAGGER WITH CONTROL SIGN
- TYPE II BARRICADE OR DRUM
- CONE, DRUM OR BARRICADE
- IMPACT ATTENUATOR OF TYPE AND TEST LEVEL SPECIFIED

GENERAL NOTES:

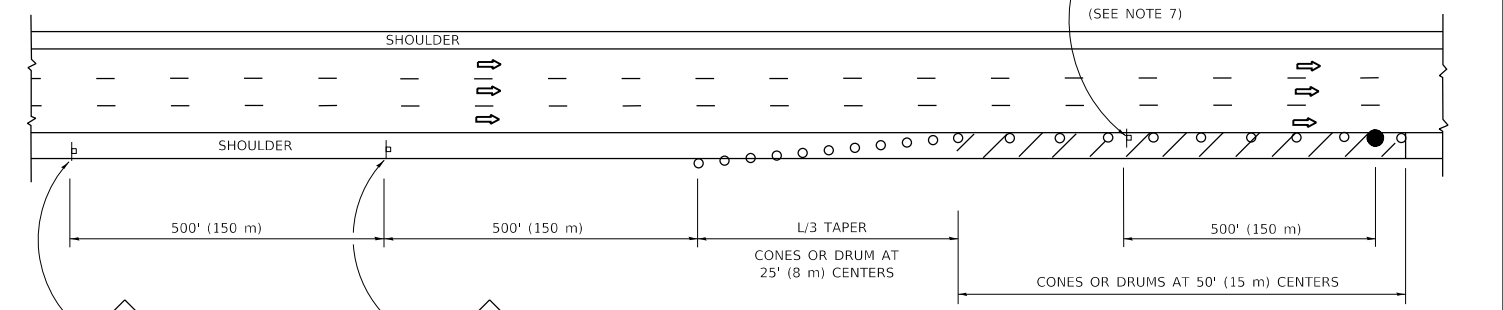
- THE "L" DISTANCE EQUALS:

SPEED LIMIT	FORMULAS
45 mph (80 km/h)	METRIC ENGLISH
OR GREATER:	L=0.65(WXS) L=(W)XS
	W = WIDTH OF OFFSET IN FEET (METERS)
	S = NORMAL POSTED SPEED MPH (KM/H)
- TYPE II BARRICADES OR DRUMS ARE REQUIRED FOR ALL NIGHTTIME CLOSURES. TYPE II BARRICADES OR DRUMS WITH MONODIRECTIONAL STEADY BURN LIGHTS ARE REQUIRED FOR DELINEATING OBSTACLES, EXCAVATIONS, OR HAZARDS EXCEEDING 100 FT (30m) IN LENGTH AT NIGHT.
- ALL SIGNS SHALL BE POST MOUNTED IF THE CLOSURE TIME EXCEEDS FOUR DAYS.
- FLASHING LIGHTS SHALL BE USED DURING THE HOURS OF DARKNESS AND SHALL BE INSTALLED ABOVE THE FIRST TWO SETS OF SIGNS.

SHOULDER CLOSURE DETAILS

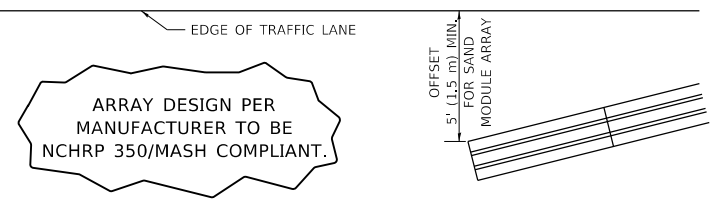


PERMANENT SHOULDER CLOSURE



DAYTIME SHOULDER CLOSURE

- THIS DETAIL IS USED WHERE:
- VEHICLES, EQUIPMENT, WORKERS OR THEIR ACTIVITIES ENCROACH IN AN AREA CLOSER THAN 15' (4.5 m) TO THE EDGE OF PAVEMENT FOR A PERIOD IN EXCESS OF 15 MINUTES.



DETAIL "A"
IMPACT ATTENUATOR, TEMPORARY
(SEE NOTE 5)

- THE IMPACT ATTENUATOR, TEMPORARY IS NOT REQUIRED WHEN THE TEMPORARY CONCRETE BARRIER WALL IS PROTECTED BY OR IS TIED INTO THE EXISTING GUARDRAIL. IF OFFSET IS LESS THAN 5 FEET USE NARROW USE TYPE DEVICE TO MEET NCHRP350/MASH.
- AUTHORIZATION FROM THE DISTRICT'S BUREAU OF TRAFFIC IS REQUIRED FOR ALL FREEWAY CLOSURES.
- THE FLAGGER AND FLAGGER SIGN ARE REQUIRED AT THE ABOVE WORK SITES WHEN:
 - FOUR OR MORE WORK VEHICLES ENTER THE TRAFFIC LANES IN A ONE HOUR PERIOD.
 - THE WORK AVTTIVITY REQUIRES FREQUENT ENCROACHMENT INTO THE LANE OPEN TO TRAFFIC.
 THE FLAGGER SHALL BE STATIONED APPROXIMATELY 100' (30 m) TO 200' (60 m) IN ADVANCE OF THE WORKERS.
- 12' MIN. WIDTH TANGENT SECTION
16' MIN. WIDTH CURVE SECTION.

ALL DIMENSIONS ARE IN INCHES (MILLIMETERS) UNLESS OTHERWISE SHOWN.

MODEL: D:\dtd\c... FILE: N:\dtd\c... PROJECT: 180... 16... 19... 13... 13... 13...

USER NAME = koby/kaka	DESIGNED -	REVISED - S.P.B. 01-07
	DRAWN - D.W.S.	REVISED - S.P.B. 12-09
PLOT SCALE = 100.0000' / in.	CHECKED -	REVISED - M.D. 06-13
PLOT DATE = 9/16/2019	DATE - 11-96	REVISED - M.D. 01-18

STATE OF ILLINOIS
DEPARTMENT OF TRANSPORTATION

TRAFFIC CONTROL DETAILS FOR FREEWAY
SHOULDER CLOSURES AND PARTIAL RAMP CLOSURES

SCALE: NONE SHEET 1 OF 1 SHEETS STA. TO STA.

F.A. RTE.	SECTION	COUNTY	TOTAL SHEETS	SHEET NO.
	2019-139-1	WILL	8	8
TC-17		CONTRACT NO. 62K13		
ILLINOIS		FED. AID PROJECT		