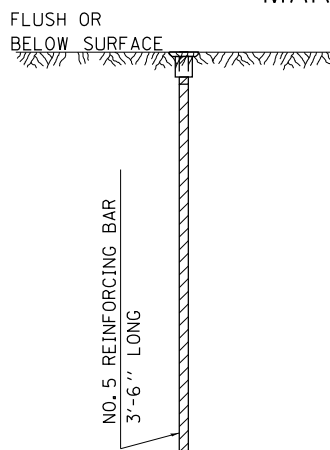


LAND SECTION & REFERENCE MARKERS

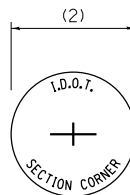
REFERENCE MARKER & LAND SECTION MARKER



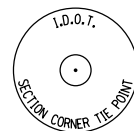
SECTION



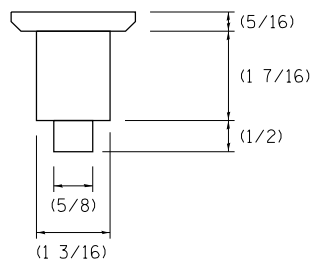
R.O.W. CAP



SECTION CORNER CAP

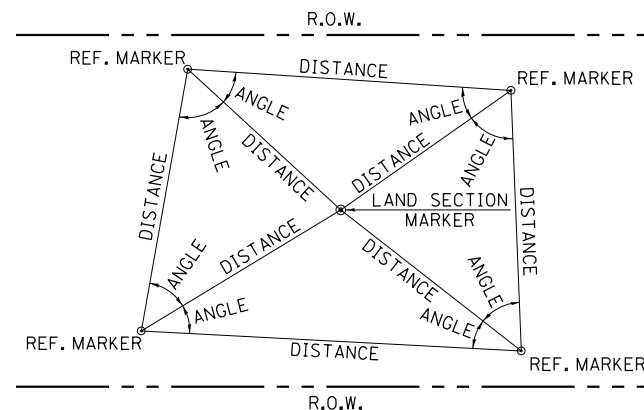


SECTION CORNER TIE POINT CAP



CAP DETAIL

METHOD OF REFERENCING MARKERS



- USE INSTRUMENT TIES TO NEARBY LAND-MARKS (STEEPLES, TOWERS, SILOS, ETC...)
- IN CULTIVATED FIELDS, SET 28" OR MORE BELOW GROUND SURFACE.
- IN FENCE LINE OR PROTECTED AREA SET TOP AT GROUND LEVEL SO AS NOT TO BE DISTURBED BY MOWING.

METHOD OF REFERENCING POINTS

REFERENCE MARKERS SHALL BE USED TO TIE IN PERMANENT LAND SECTION AND 1/4 SECTION CORNERS. WHERE LAND SECTION MARKERS FALL IN THE SHOULDERS OR GRAVEL SURFACES, THE TOP OF THE BAR SHALL BE KEPT 3" BELOW THE SURFACE. LAND SECTION MARKERS LOCATED IN TRAFFIC LANES SHALL BE REPLACED BY CORE DRILL AND RESETTING PIN.

ALUMINUM CAPS SHALL BE PLACED ON TOP OF THE REINFORCEMENT BAR. THERE ARE 3 TYPES OF CAPS, ONE FOR THE RIGHT-OF-WAY CORNERS, ONE FOR THE SECTION CORNERS AND ONE FOR THE SECTION CORNER TIE POINTS. THE CAPS WILL BE SUPPLIED BY THE SURVEYOR WHO IS RESPONSIBLE FOR MONUMENTING CORNERS.

ALL DIMENSIONS ARE IN INCHES UNLESS OTHERWISE NOTED.

PLOT DATE = Tue Aug 27 14:30:31 2013

REVISED - 3-05-10	REGION 2 / DISTRICT 2 STANDARD				F.A. RTE.	SECTION	COUNTY	TOTAL SHEETS	SHEET NO.
REVISED -									
REVISED -									
REVISED -	SCALE: 1.5455' / in.	SHEET NO. OF	SHEETS	STA. TO STA.	CONTRACT NO.				
					FED. ROAD DIST. NO.	ILLINOIS	FED. AID PROJECT		

LAND SECTION & REFERENCE MARKERS

63.4