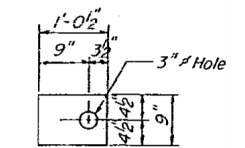
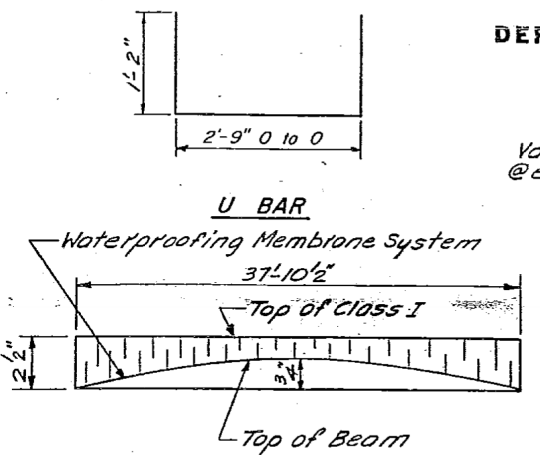


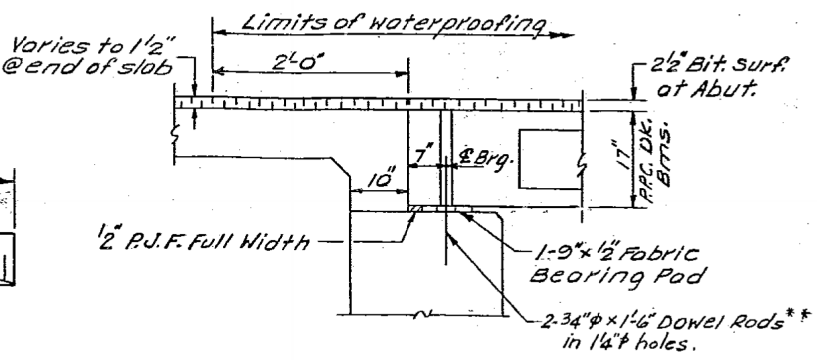
FABRIC BEARING PAD (Interior)



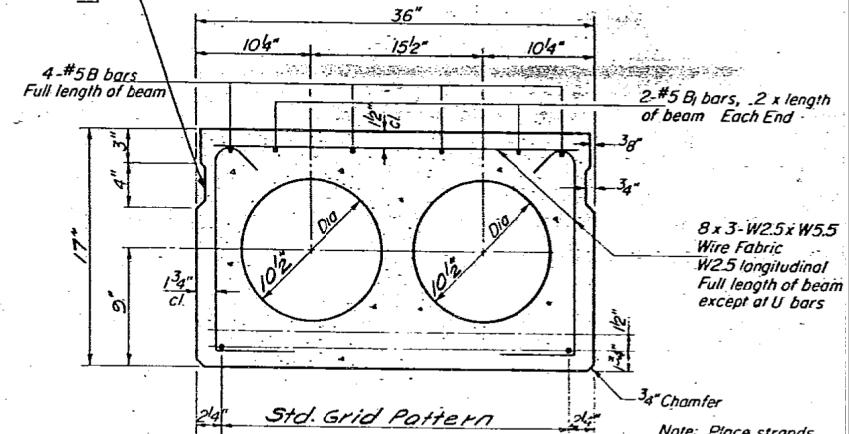
FABRIC BEARING PAD (Exterior)



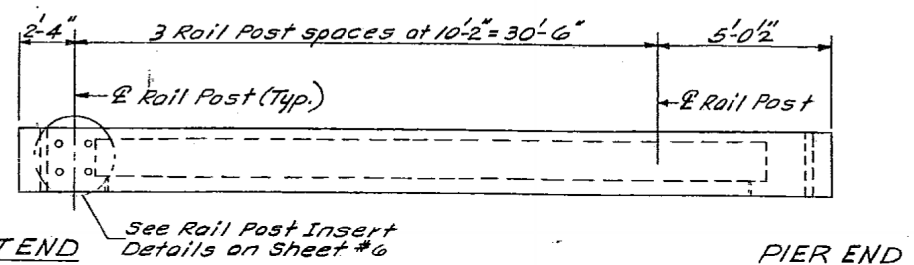
ANTICIPATED CAMBER DIAGRAM



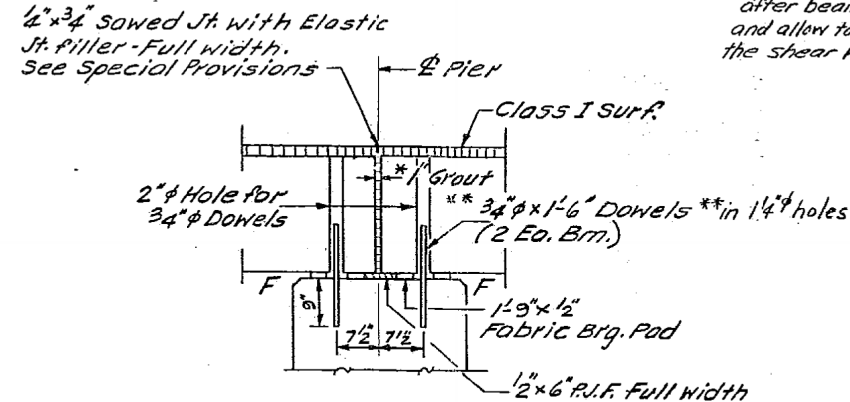
SEC. THRU ABUT. AT RDWY.



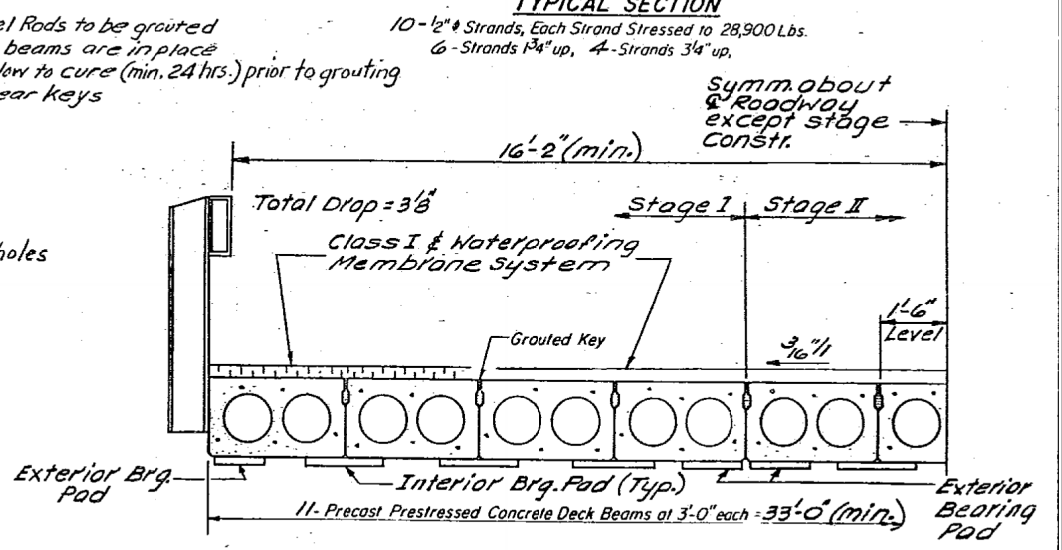
TYPICAL SECTION
10-1/2" Strands, Each Strand Stressed to 28,900 Lbs.
6-Strands 1 3/4" up, 4-Strands 3/4" up.



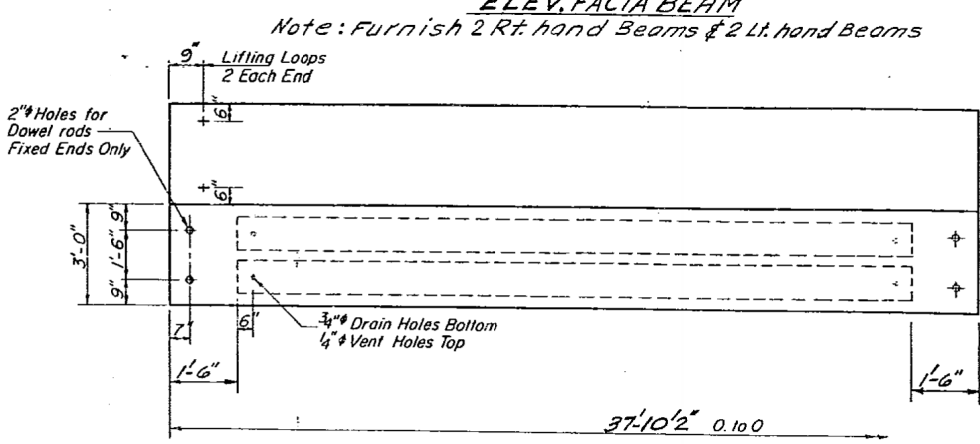
ELEV. FACIA BEAM
Note: Furnish 2 Rt. hand Beams & 2 Lt. hand Beams



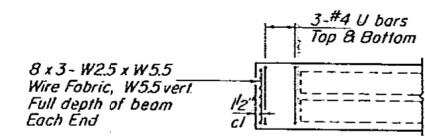
SEC. AT PIER



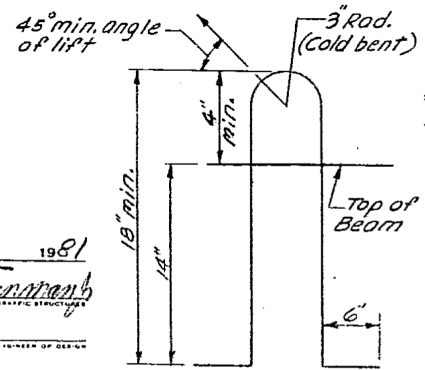
HALF CROSS SECTION Looking West



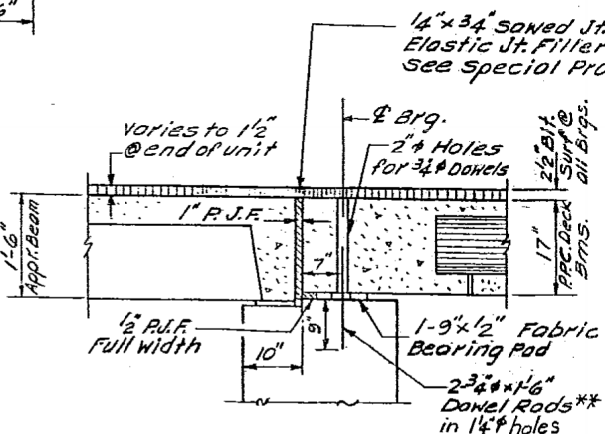
PLAN



END PLAN



LIFTING LOOP DETAIL



SECTION THRU ABUT. AT OUTSIDE BEAM

FOR INFORMATION ONLY

** Dowel Rods to be grouted after beams are in place and allow to cure (min. 24 hrs.) prior to grouting the shear keys

* 1" Joint shall be packed with a very dry mix of 2:1 sand and P.C. mortar. This dimension may vary plus or minus to accommodate tolerance in Bm. lengths.

NOTES

Prestressing steel shall be non-galvanized high strength, stress-relieved 7-wire strand, Grade 270. The nominal diameter shall be 1/2" and the nominal cross-sectional area shall be 0.153 sq. in. Lifting loops shall be 1/2" diameter, 6 x 25 class wire rope with fiber core and shall have a minimum ultimate tensile strength of 21,000 lbs. or 1/2" - 270 ksi strands as shown.

Reinforcement bars shall conform to AASHTO: M-31 or M-53, Grade 60. The bearing seat surfaces shall be adjusted by shimming to assure firm and even bearing. Two 1/8" fabric adjusting shims of the dimensions of the Exterior Bearing Pad shall be provided for each bearing.

Key way surfaces shall be cleaned to remove form oil or other bond breaking materials prior to shipment of the beams. Cleaning shall be done by sandblasting the keyway areas between top of the beam and the bottom edge of key.

BILL OF MATERIAL

Bar	No.	Size	Length	Shape
Precast Prestressed Concrete Deck Beams (17")		Sq Ft.	2500	

DECK BEAMS
F.A. RT. 885 SEC. 112B-DR
POPE COUNTY
STA. 913+50.00

DESIGNED: [Signature] 1981
CHECKED: [Signature]
DRAWN: [Signature]
CHECKED: BVG s-a-d
APPROVED: [Signature]
DIRECTOR OF HIGHWAYS

PD-3-S 6-15-80



USER NAME = has	DESIGNED - JMS	REVISED -
ESCA PROJECT NO. 988.12	DRAWN - HAS	REVISED -
PLOT SCALE = 0.1667' / IN.	CHECKED - RDP	REVISED -
PLOT DATE = 8/2/2013 11:43:11 AM	DATE - 03/13	REVISED -

STATE OF ILLINOIS
DEPARTMENT OF TRANSPORTATION

EXISTING STRUCTURE PLANS - FOR INFORMATION ONLY
STRUCTURE NO. 076-0009

SCALE: SHEET NO. 3 OF 8 SHEETS STA. TO STA.

F.A.P. RTE. 885	SECTION 112B-1	COUNTY POPE	TOTAL SHEETS 56	SHEET NO. 46
CONTRACT NO. 78230			FED. ROAD DIST. NO. ILLINOIS FED. AID PROJECT AID	