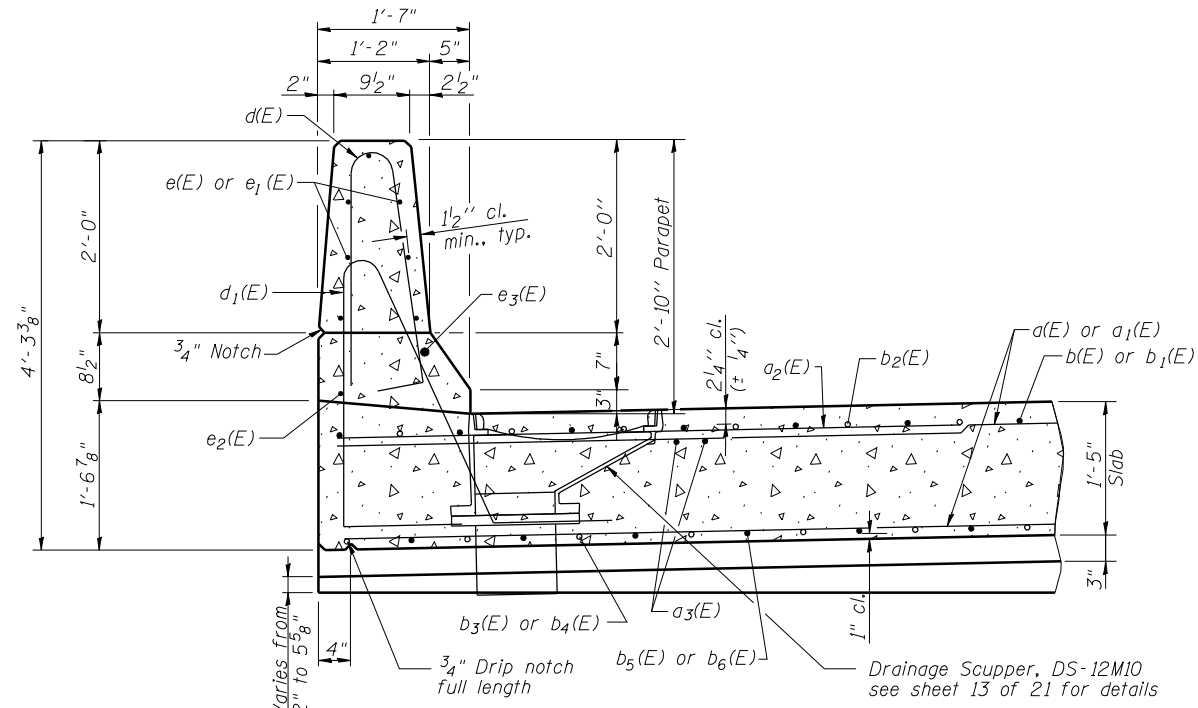
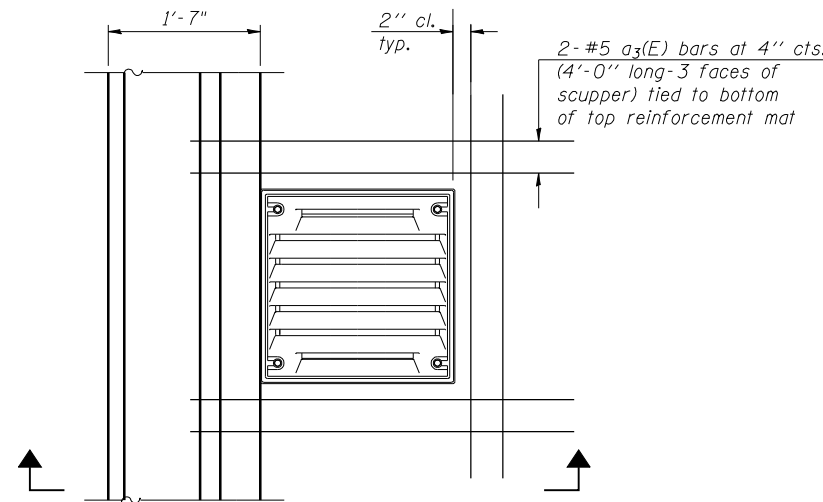


INSIDE ELEVATION OF PARAPET

MINIMUM BAR LAP
(Parapet)
#4 bar = 2'-0"
#8 bar = 5'-2"

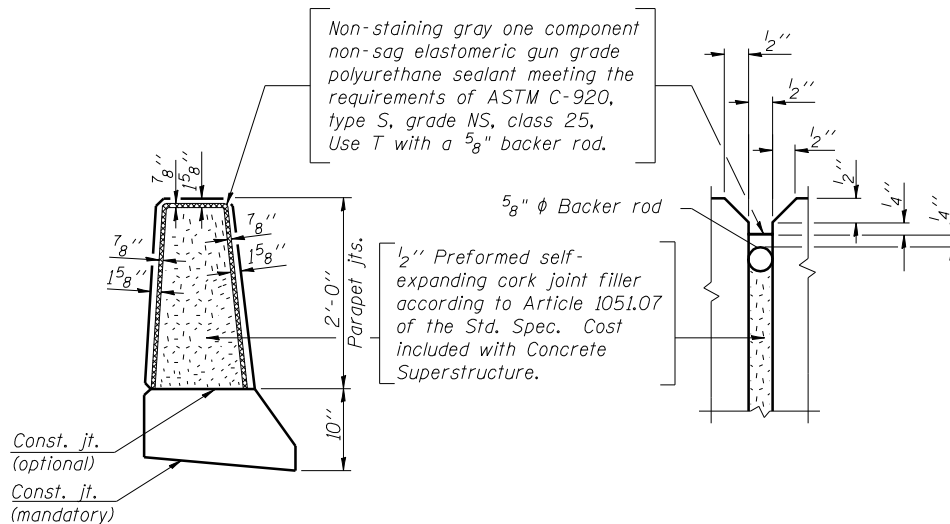


SECTION THRU PARAPET

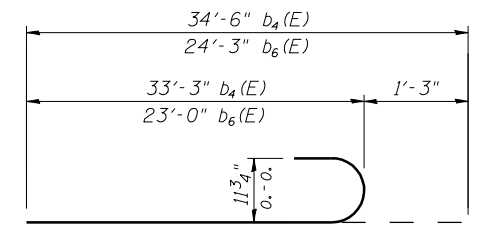


SCUPPER REINFORCING PLAN

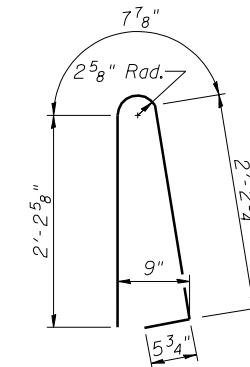
Note:
Cut longitudinal reinforcement to clear drainage scuppers.



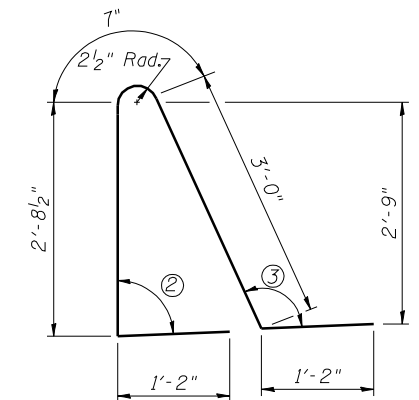
PARAPET JOINT DETAILS



BARS b₄(E) & b₆(E)



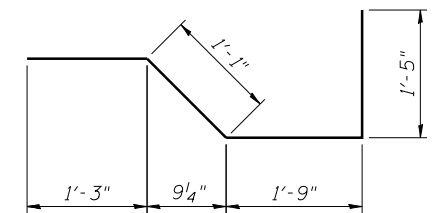
BAR d(E)



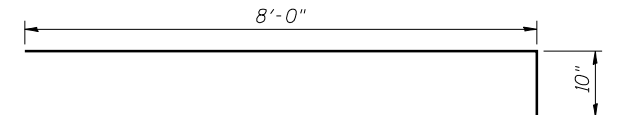
BAR d₁(E)

② 89°

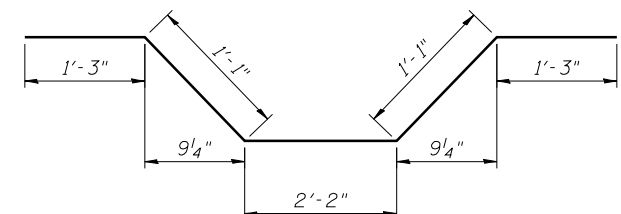
③ 109°



BAR x₂(E)



BAR x₁(E)



BAR x(E)

PRINT DRIVER = L:\05-EB\0411
SCALE NAME = PLOT
FILE NAME = 07600002-78230-SP-01.dwg



USER NAME = has	DESIGNED - SHL 12/12	REVISED -
ESCA PROJECT NO. 988.12	CHECKED - RDP 03/13	REVISED -
PLOT SCALE = 0/2" = 1" / IN.	DRAWN - HAS 12/12	REVISED -
PLOT DATE = 8/2/2013 11:37:47 AM	CHECKED - RDP 06/13	REVISED -

**STATE OF ILLINOIS
DEPARTMENT OF TRANSPORTATION**

**SUPERSTRUCTURE DETAILS
STRUCTURE NO. 076-0032**

SHEET NO. 9 OF 21 SHEETS

F.A.P. RTE.	SECTION	COUNTY	TOTAL SHEETS	SHEET NO.
885	112B-1	POPE	56	31
CONTRACT NO. 78230				
ILLINOIS FED. AID PROJECT AID				