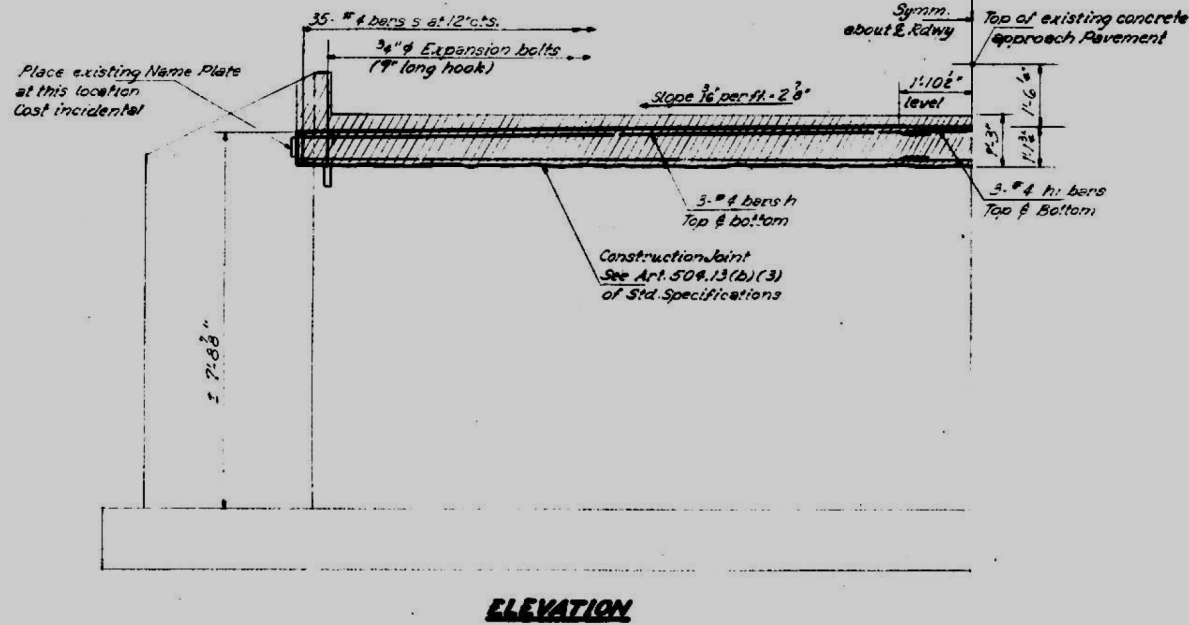
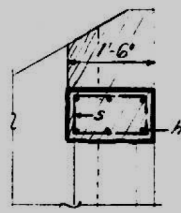


STATE OF ILLINOIS
DEPARTMENT OF PUBLIC WORKS & BUILDINGS
DIVISION OF HIGHWAYS

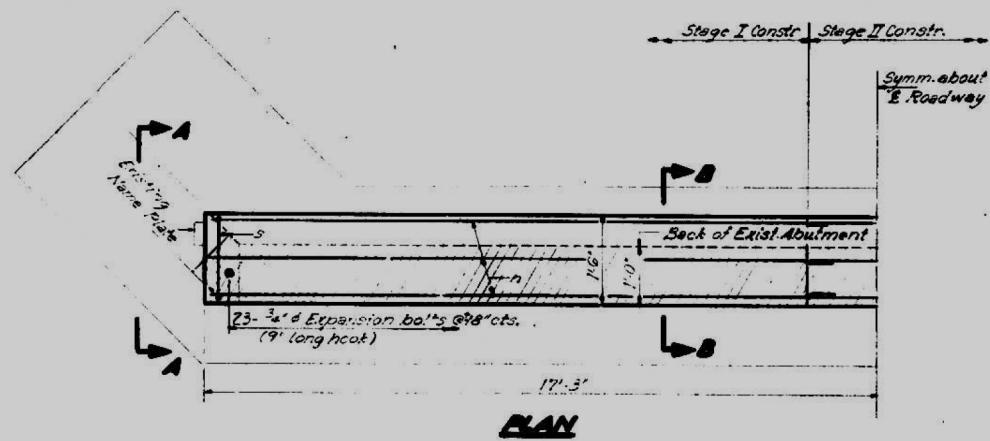
DATE	DESIGN	CHECKED	SCALE	SHEET NO.
11-13	23BR-1	St. Clair	13	5
SHEETS				5 SHEETS



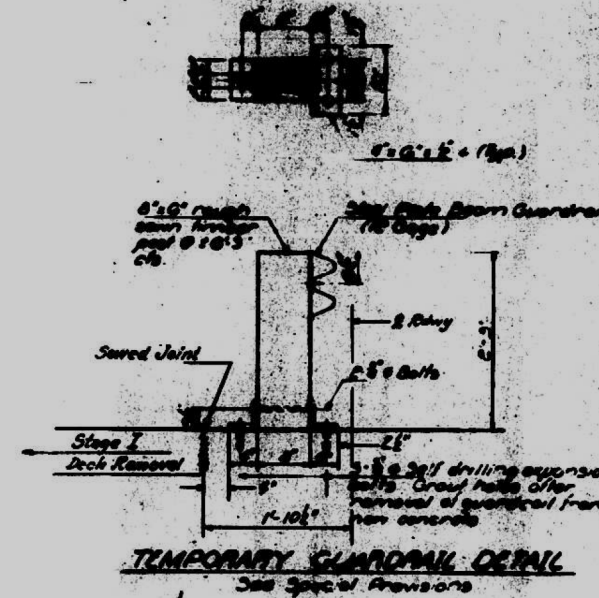
ELEVATION



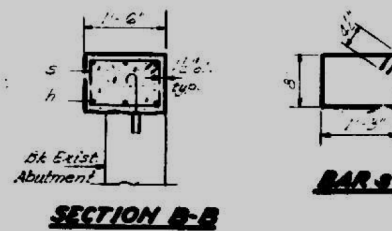
VIEW A-A



PLAN



TEMPORARY GUARDRAIL DETAIL
See Special Provisions



SECTION B-B

Notes:
Hatched area indicates Concrete to be removed. Reinforcement extending into removed area shall be cleaned and incorporated into the new construction.
Expansion bolts shall be anchored in sound concrete.
All edges shall have standard 3/4 inch chamfers except as noted.

TWO ABUTMENTS
BILL OF MATERIAL

Bar	No.	Size	Length	Shape
h	12	#4	16'-3"	—
h1	12	#4	19'-0"	—
s	70	#4	4'-7"	□
Class II Concrete Cu. Yds. 3.9				
Reinforcement Bars Lbs. 500				
Concrete Remove Cu. Yds. 3.0				
Expansion Bolts 1/2 Each #6				

ABUTMENTS
S.B. & R.H. SEC. 23 BR 2
ST. CLAIR COUNTY
STA. 679+65

DESIGNED	James V. Tambi	EXAMINED	DEC 4 1960
CHECKED	James P. Lee	PASSED	78
DRAWN	ustarik	APPROVED	Richard H. [Signature]
CHECKED	JP		

47

NOT TO SCALE - FOR INFORMATIONAL PURPOSES ONLY

FILE NAME =	USER NAME = #USER*	DESIGNED -	REVISED -	STATE OF ILLINOIS DEPARTMENT OF TRANSPORTATION	EXISTING STRUCTURE PLANS - NOT TO SCALE	F.A.P. RTE.	SECTION	COUNTY	TOTAL SHEETS	SHEET NO.
#FILE#		DRAWN -	REVISED -		SCALE: NO SCALE	103	23BR-1	ST. CLAIR	38	38
		CHECKED -	REVISED -		SHEET NO. 5 OF 5 SHEETS					
		DRAWN DATE = #DATE*	REVISED -		STA. TO STA.					
						FED. ROAD DIST. NO.	ILLINOIS	FED. AID PROJECT		