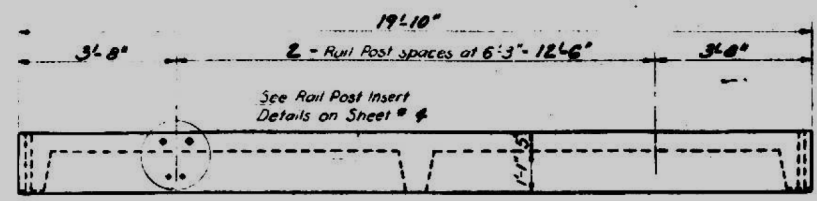


STATE OF ILLINOIS
DEPARTMENT OF PUBLIC WORKS & BUILDINGS
DIVISION OF HIGHWAYS

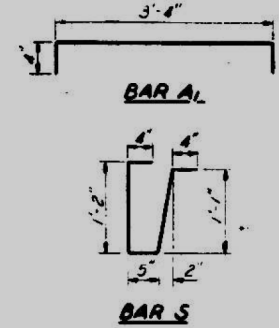
DATE	DESIGN	PROJECT	TOTAL SHEETS	SHEET NO.
11-15	23BR	ST. CLAIR	15	11
				5 SHEETS



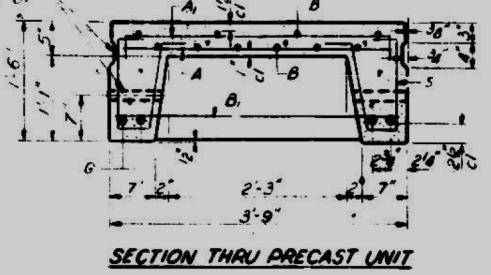
ELEVATION

BAR LIST - ONE UNIT
Reinforcement to be cast into slab

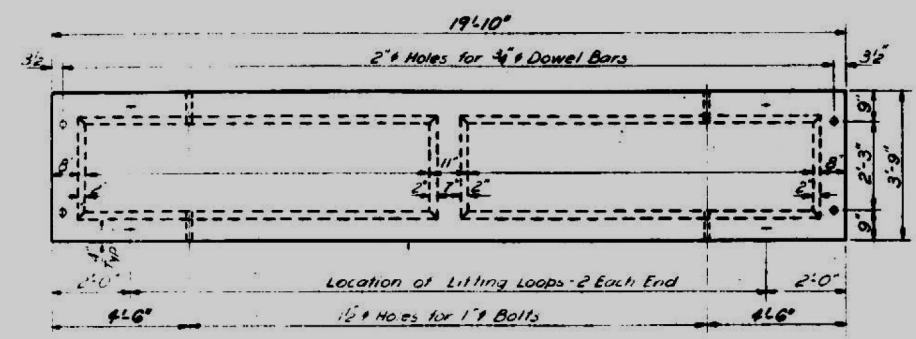
Bar	No	Size	Length	Shape
A	52	#4	3'-3"	—
A	27	#4	4'-0"	—
B	10	#4	18'-6"	—
B	6	#4	3'-6"	—
G	4	#10	18'-6"	—
S	#2	#3	3'-4"	U



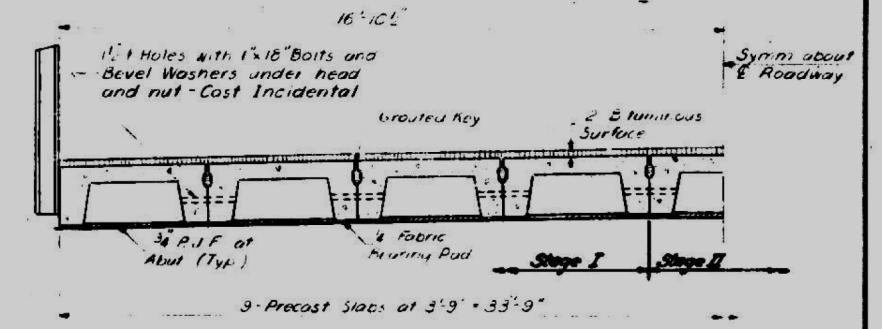
Limit Key #12 Holes on exterior face of outside unit



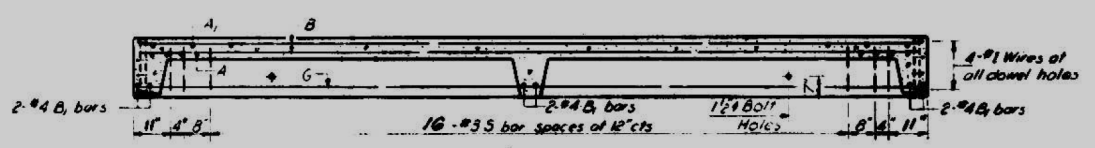
SECTION THRU PRECAST UNIT



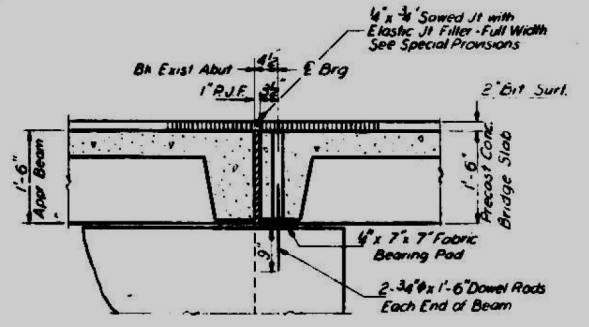
PLAN OF ONE UNIT



HALF CROSS SECTION
Looking North



LONGITUDINAL SECTION



SECTION THRU ABUT.
AT OUTSIDE BEAM

NOTES
Unless otherwise approved by the Engineer, lifting loops shall be 6" x 19 class wire rope with fiber core and shall have a minimum ultimate strength of 18,700 lbs. Loops shall be burned off after slab has been erected. Holes shall be drilled and anchor dowels grouted in place. Cast of reinforcement and accessories cast into the slab unit bearing pads, furnishing, drilling for, placing and grouting anchor dowels is included in Unit bid price for "Precast Concrete bridge Slab".



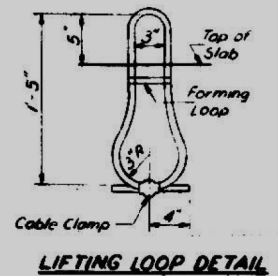
SLAB REINFORCEMENT

BILL OF MATERIAL

Item	Unit	Quantity
Precast Concrete Bridge Slab	Sq Ft	669
Removal of Existing Superstructure	L. Sum	0.54

DESIGNED *Simon Upton*
CHECKED *James Ponce*
DRAWN *R. P. Summer*
CHECKED *JP*

EXAMINED *[Signature]*
APPROVED *[Signature]*



LIFTING LOOP DETAIL

STRESSES
f'c = 4,500 psi
f'c = 1,800 psi
f's = 20,000 psi
n = 8
LOADING HS-20

SUPERSTRUCTURE
23BR-1 ST. CLAIR COUNTY
SHEET 11 OF 15

SR-3 15 Precast Units @ 20'lg

NOT TO SCALE - FOR INFORMATIONAL PURPOSES ONLY