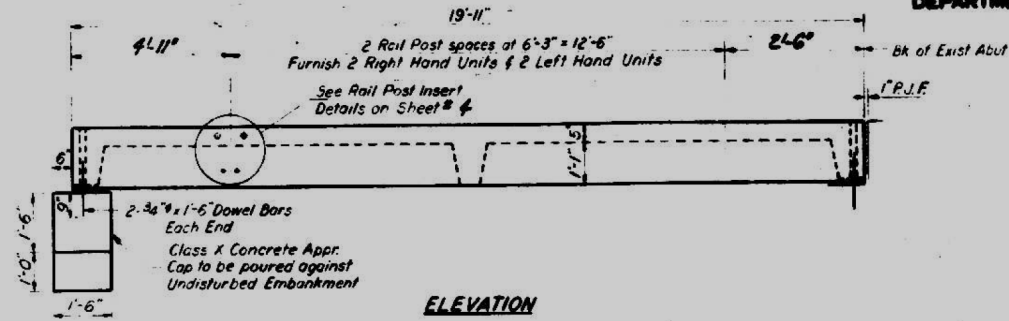
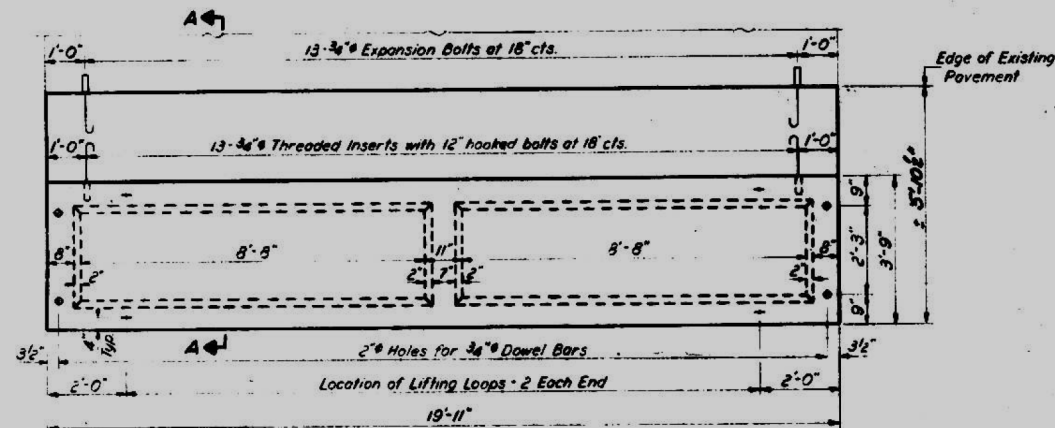
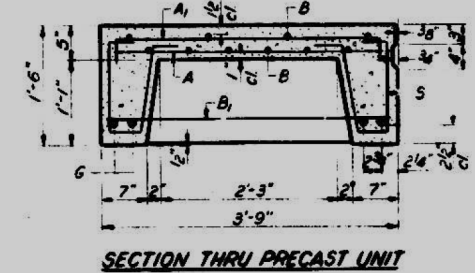
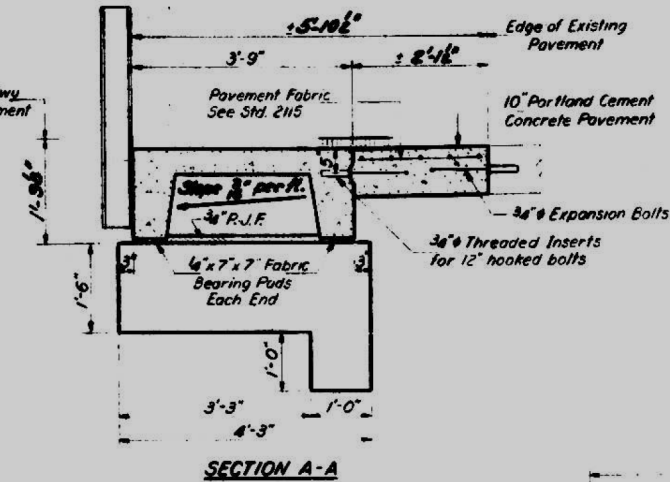


STATE OF ILLINOIS
DEPARTMENT OF PUBLIC WORKS & BUILDINGS
DIVISION OF HIGHWAYS

DATE	DESIGN	SECTION	SHEET NO.	TOTAL SHEETS
10/15	23/00	St. Clair	13	10
				5 SHEETS

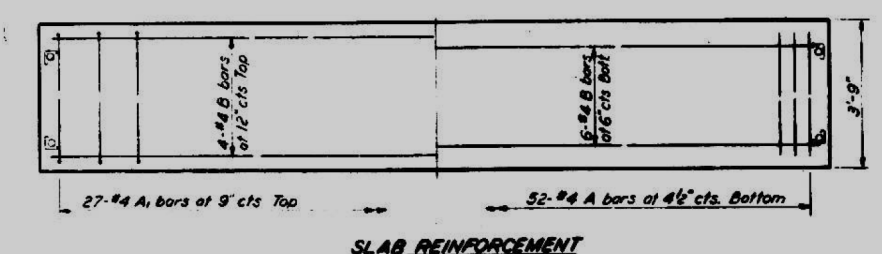
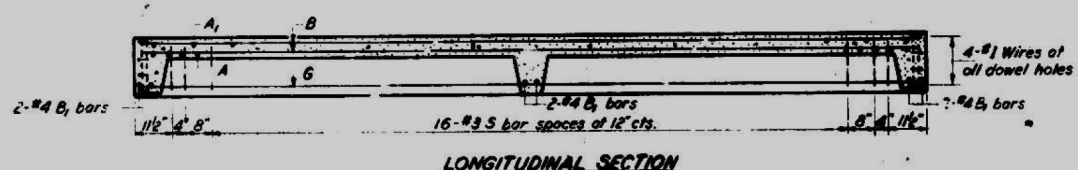
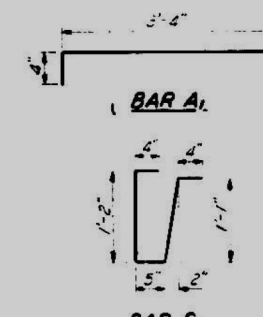


Grade Line Elev. at Rdwy Top of exist. conc. pavement



BAR LIST - ONE UNIT
Reinforcement to be cast into slab

Bar No	Size	Length	Shape
A	#4	3'-3"	
A ₁	#4	4'-0"	
B	#4	19'-6"	
B ₁	#4	3'-6"	
G	#10	19'-6"	
S	#3	3'-4"	

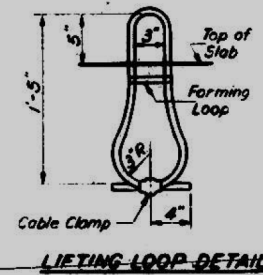


NOTES

Unless otherwise approved by the Engineer, lifting loops shall be 1/2" 6x19 class wire rope with fiber core and shall have a minimum ultimate strength of 18,700 lbs. Loops shall be burned off after slab has been erected. Holes shall be drilled and anchor dowels grouted in place. Cost of reinforcement and accessories cast into the slab unit, bearing pads, furnishing, drilling for, placing and grouting anchor dowels and 3/4" hooked bolts is included in Unit bid price for "Precast Concrete Bridge Slab." The Precast Concrete Bridge Slab shall be erected and aligned with the exterior face of the exterior Deck Beam after Deck Beams are in final position.

BILL OF MATERIAL

Item	Unit	Quantity
Precast Concrete Bridge Slab	Sq Ft	299
Portland Cement Concrete Pavement (10")	Sq Yds	19
Pavement Fabric	Sq Yds	19
Expansion Bolts 3/8"	Each	52
Class X Concrete	Cu Yds	1.6



STRESSES

f_c = 4,500 psi.
f_c = 1,800 psi.
f_s = 20,000 psi
n = 8

APPROACH DETAILS
BRIDGE DECK SLAB
SLAB REINFORCEMENT

DESIGNED: Simon (Votaw)
CHECKED: James Pence
DRAWN: J.L. Armstrong
CHECKED: JP

EXAMINED: [Signature]
FABRIKED: [Signature]
APPROVED: [Signature]

AP-1 20' Precast Appr Unit (R1 L)

NOT TO SCALE - FOR INFORMATIONAL PURPOSES ONLY