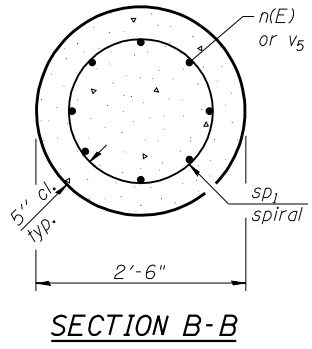
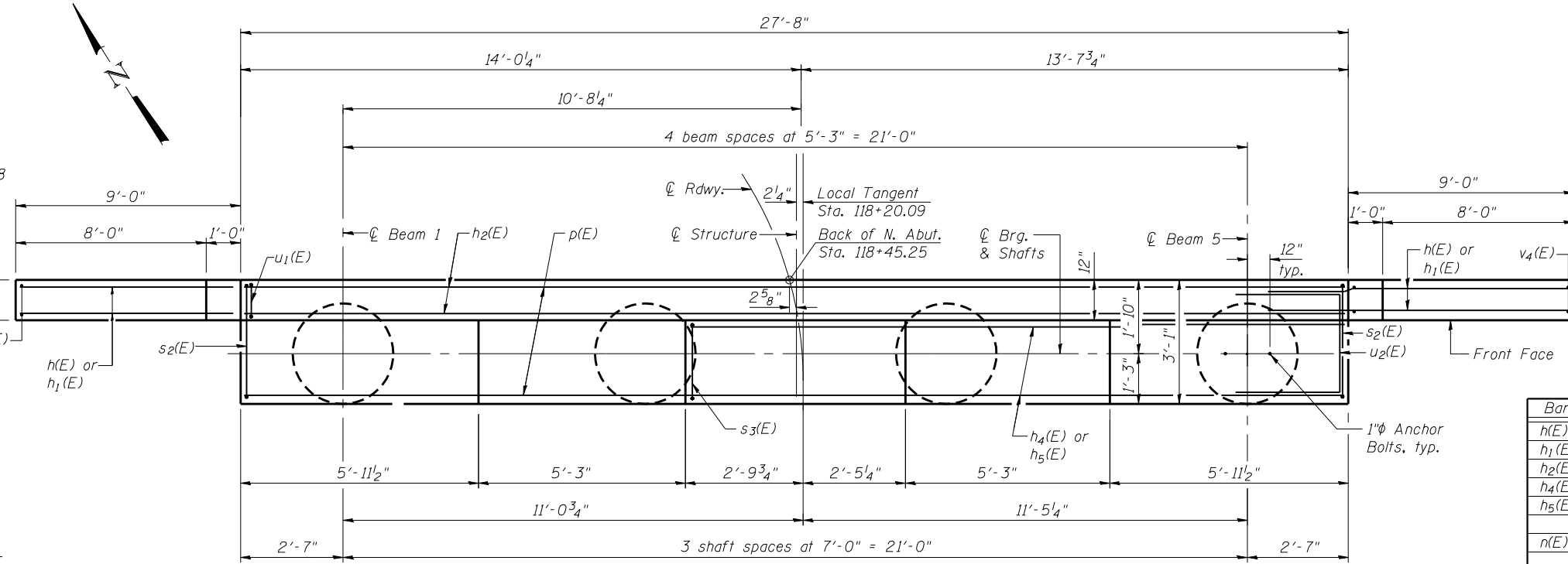
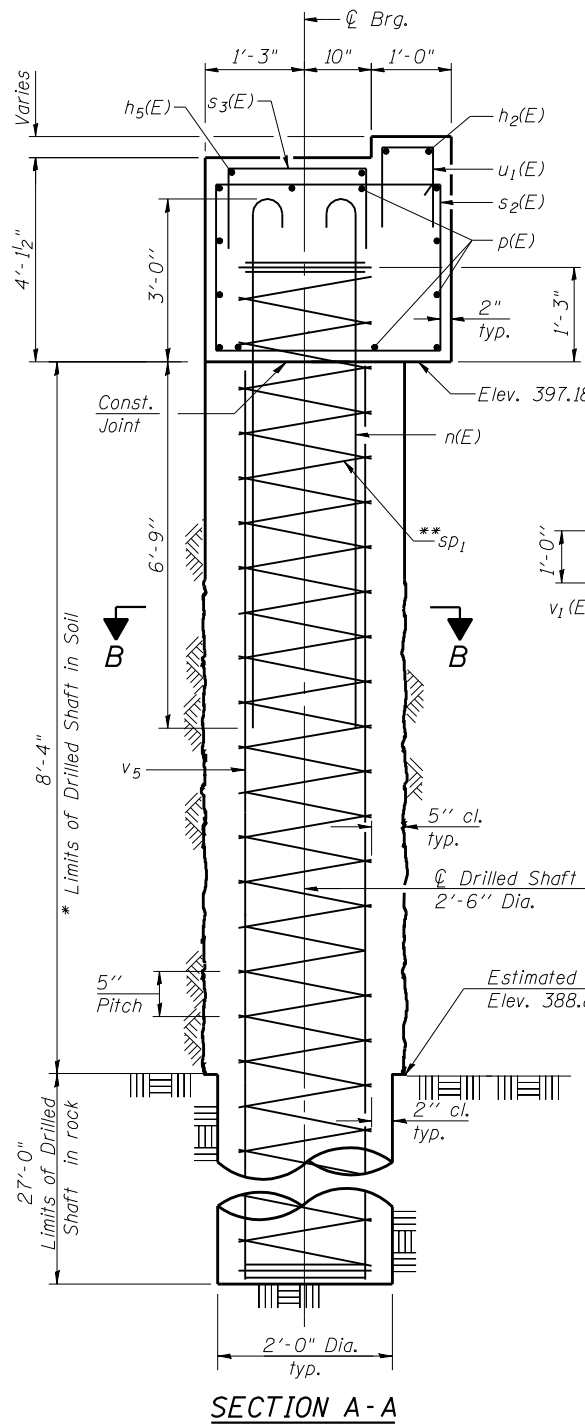
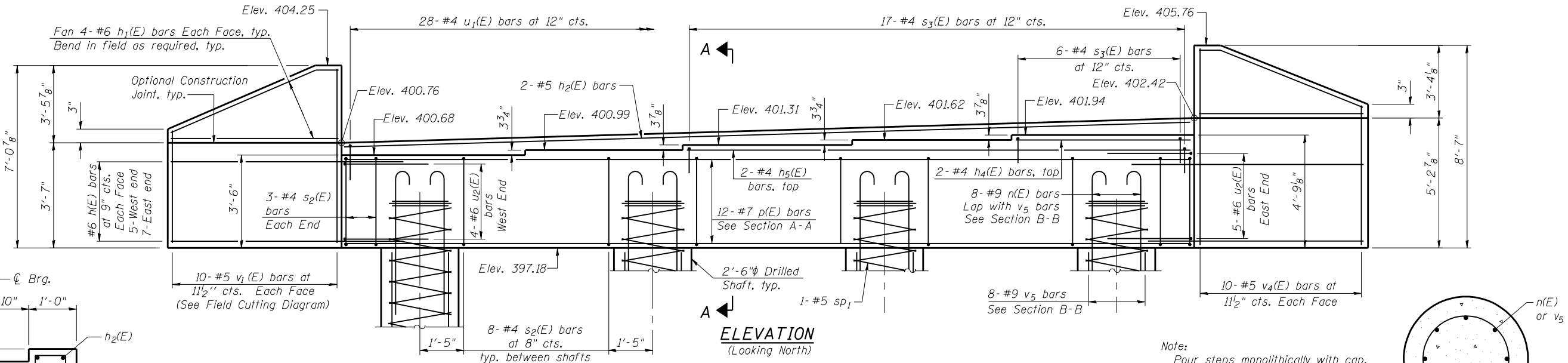


* The quantities and detailing are based on the estimated elevations shown on the plans. The actual elevations may differ at each shaft and corresponding adjustments shall be made to the drilled shaft and reinforcement quantities and payment limits.

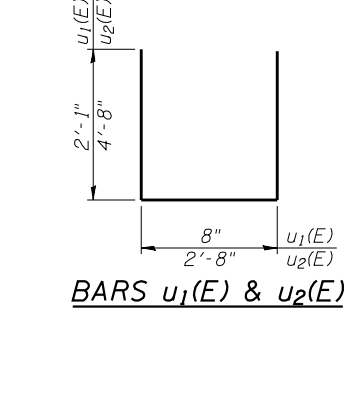
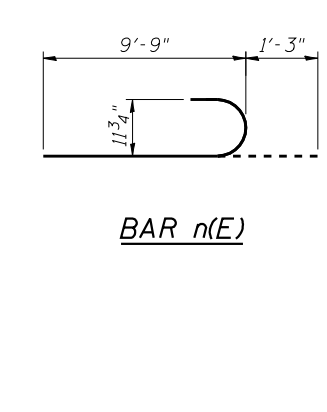
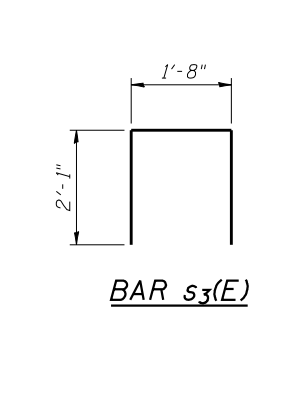
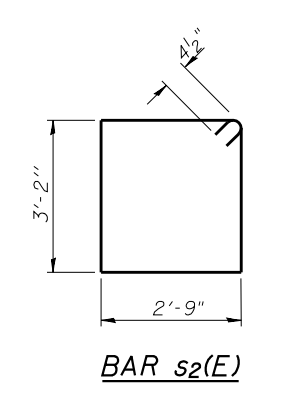
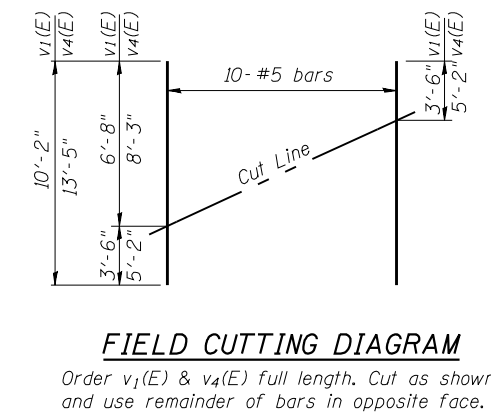
** Provide 1/2 extra turns top and bottom. Extend spiral 1'-3" into abutment cap. Provide min. 4-#4 spacers or equivalent.



BILL OF MATERIAL

Bar	No.	Size	Length	Shape
h(E)	24	#6	13'-3"	—
h1(E)	16	#6	8'-8"	—
h2(E)	2	#5	27'-4"	—
h4(E)	2	#4	5'-7"	—
h5(E)	2	#4	16'-1"	—
n(E)	32	#9	11'-0"	⌋
p(E)	12	#7	27'-4"	—
s2(E)	30	#4	12'-7"	⌋
s3(E)	23	#4	5'-10"	⌋
sp1	4	#5	36'-7"	⌋
u1(E)	28	#4	4'-10"	⌋
u2(E)	9	#6	12'-0"	⌋
v1(E)	10	#5	10'-2"	—
v4(E)	10	#5	13'-5"	—
v5	32	#9	35'-2"	—
Structure Excavation		Cu. Yd.	76	
Concrete Structures		Cu. Yd.	17.7	
Reinforcement Bars		Pound	5750	
Reinforcement Bars, Epoxy Coated		Pound	3480	
Drilled Shaft in Soil		Cu. Yd.	6.1	
Drilled Shaft in Rock		Cu. Yd.	12.6	

*** Length is height of spiral



Coombe-Bloxdorf P.C.
 CIVIL ENGINEERS-
 STRUCTURAL ENGINEERS-
 LAND SURVEYORS
 Design Firm License No. 184-002703

USER NAME = .CFC.	DESIGNED - GB/MCB	REVISED -
PLOT SCALE = 0.166667' / IN.	CHECKED - MCB	REVISED -
PLOT DATE = 7/23/2013	DRAWN - TFG	REVISED -
	CHECKED - MCB	REVISED -

STATE OF ILLINOIS
 DEPARTMENT OF TRANSPORTATION

NORTH ABUTMENT
 STRUCTURE NO. 093-0024
 SHEET NO. 16 OF 24 SHEETS

F.A. RTE.	SECTION	COUNTY	TOTAL SHEETS	SHEET NO.
1B	(12A)B-1	WABASH	52	38
CONTRACT NO. 74217				
ILLINOIS FED. AID PROJECT				