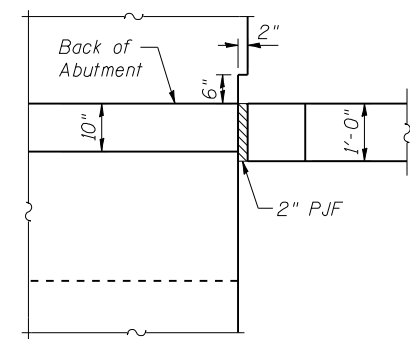
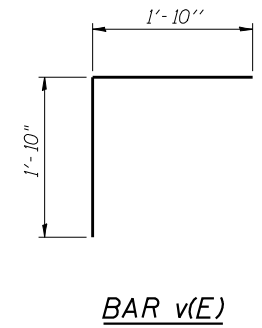
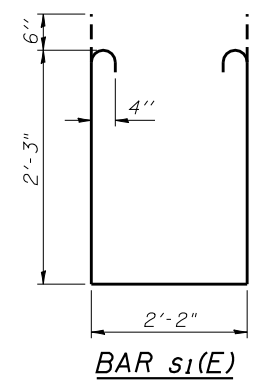
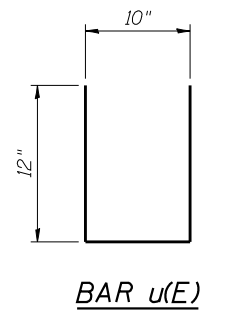
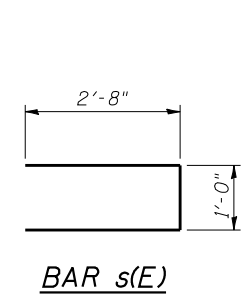
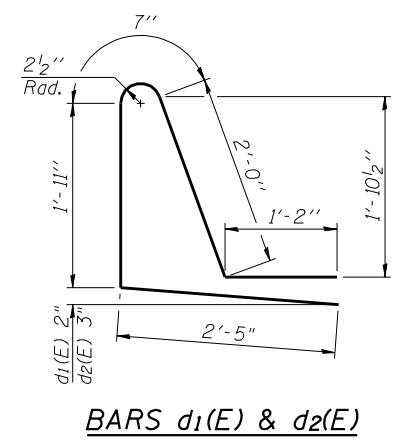
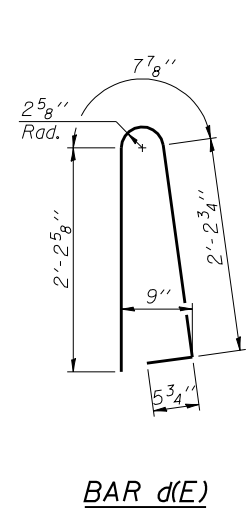
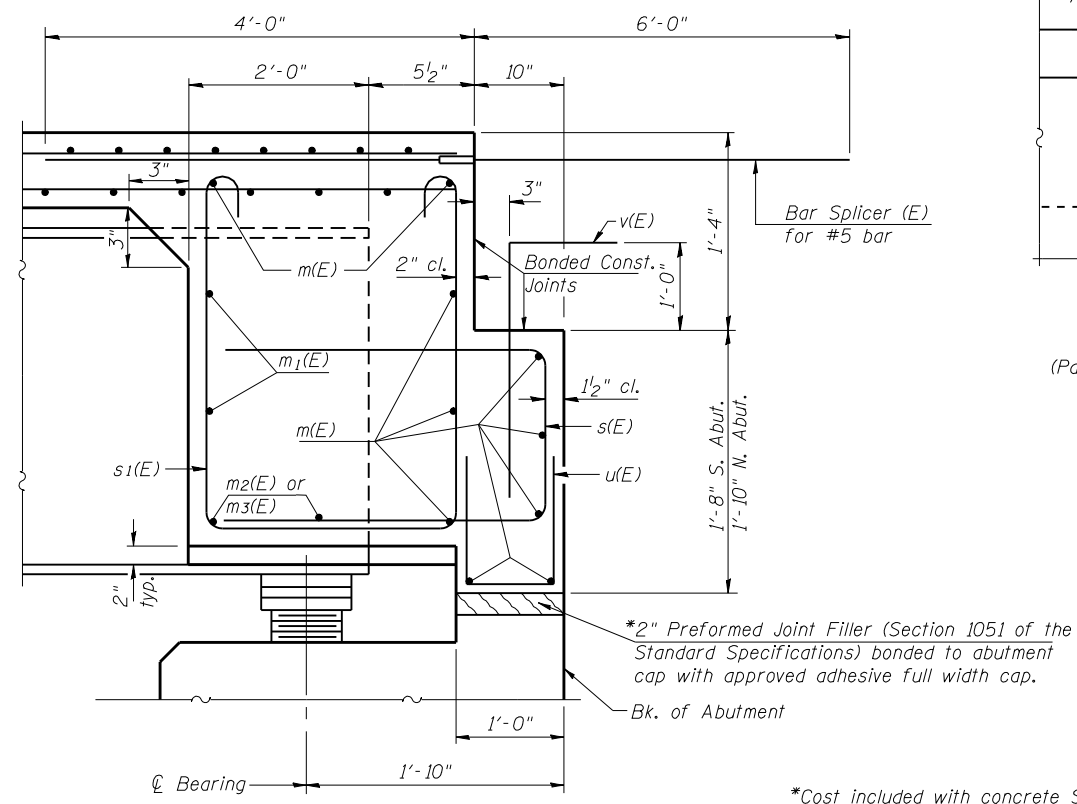


**DIAPHRAGM ELEVATION AT ABUTMENT**  
South Abutment Looking South



**VIEW B-B**  
(Parapet and approach not shown)



**SECTION A-A**

Notes:  
Reinforcement bars in diaphragm are billed with superstructure.  
Concrete in diaphragm is included with Concrete Superstructure.  
Bars indicated thus 2 x 5-#6 etc. indicates 2 lines of bars with 5 lengths per line.  
See Sheet 20 of 24 for Bar Splicer Assembly Details.

**MIN. BAR LAP**  
#6 bar = 3'-4"

**SUPERSTRUCTURE BILL OF MATERIAL**

Bar	No.	Size	Length	Shape
a(E)	241	#5	27'-0"	—
a1(E)	177	#5	26'-4"	—
a2(E)	482	#6	6'-0"	—
a3(E)	24	#5	1'-6"	—
b(E)	124	#5	29'-5"	—
b1(E)	56	#6	22'-9"	—
b2(E)	150	#5	24'-0"	—
d(E)	242	#5	5'-7"	U
d1(E)	121	#5	8'-1"	U
d2(E)	121	#5	8'-1"	U
e(E)	56	#4	18'-2"	—
e1(E)	28	#4	17'-8"	—
e2(E)	8	#4	19'-4"	—
e3(E)	4	#4	18'-10"	—
e4(E)	4	#8	36'-9"	—
e5(E)	2	#8	35'-8"	—
m(E)	20	#6	27'-0"	—
m1(E)	20	#6	8'-1"	—
m2(E)	16	#6	4'-10"	—
m3(E)	8	#6	2'-10"	—
s(E)	76	#5	6'-4"	U
s1(E)	60	#4	7'-8"	U
u(E)	56	#5	2'-10"	U
v(E)	56	#5	3'-8"	L
Reinforcement Bars, Epoxy Coated		Pound	33,090	
Concrete Superstructure		Cu. Yds.	116.4	

\*Cost included with concrete Superstructure

FILE NAME: 74217-099-super-detail.dgn  
CB PROJECT NO. 08853-5

**Coombes-Bloxdorf P.C.**  
- CIVIL ENGINEERS -  
- STRUCTURAL ENGINEERS -  
- LAND SURVEYORS -  
Design Firm License No. 184-002703

USER NAME = .CFC.	DESIGNED - GB/MCB	REVISED -
PLOT SCALE = 0:2.0000 '1' / IN.	CHECKED - MCB	REVISED -
PLOT DATE = 7/23/2013	DRAWN - TFG	REVISED -
	CHECKED - MCB	REVISED -

**STATE OF ILLINOIS**  
**DEPARTMENT OF TRANSPORTATION**

**SUPERSTRUCTURE DETAILS**  
**STRUCTURE NO. 093-0024**  
SHEET NO. 9 OF 24 SHEETS

F.A. RTE.	SECTION	COUNTY	TOTAL SHEETS	SHEET NO.
1B	(12A)B-1	WABASH	52	31
CONTRACT NO. 74217				
ILLINOIS FED. AID PROJECT				