

WEST EDGE OF SHOULDER

Location	Station	Offset	Theoretical Grade Elevations
S End N App Slab	11845.38	-12.00	404.11
A	11855.52	-12.00	404.06
B	11865.67	-12.00	404.00
N End N App Slab	11876.86	-12.00	403.94

WEST EDGE OF PAVEMENT

Location	Station	Offset	Theoretical Grade Elevations
S End N App Slab	11845.32	-10.00	404.23
A	11855.43	-10.00	404.18
B	11865.55	-10.00	404.12
N End N App Slab	11875.72	-10.00	404.06

☉ ROADWAY & PROFILE GRADE

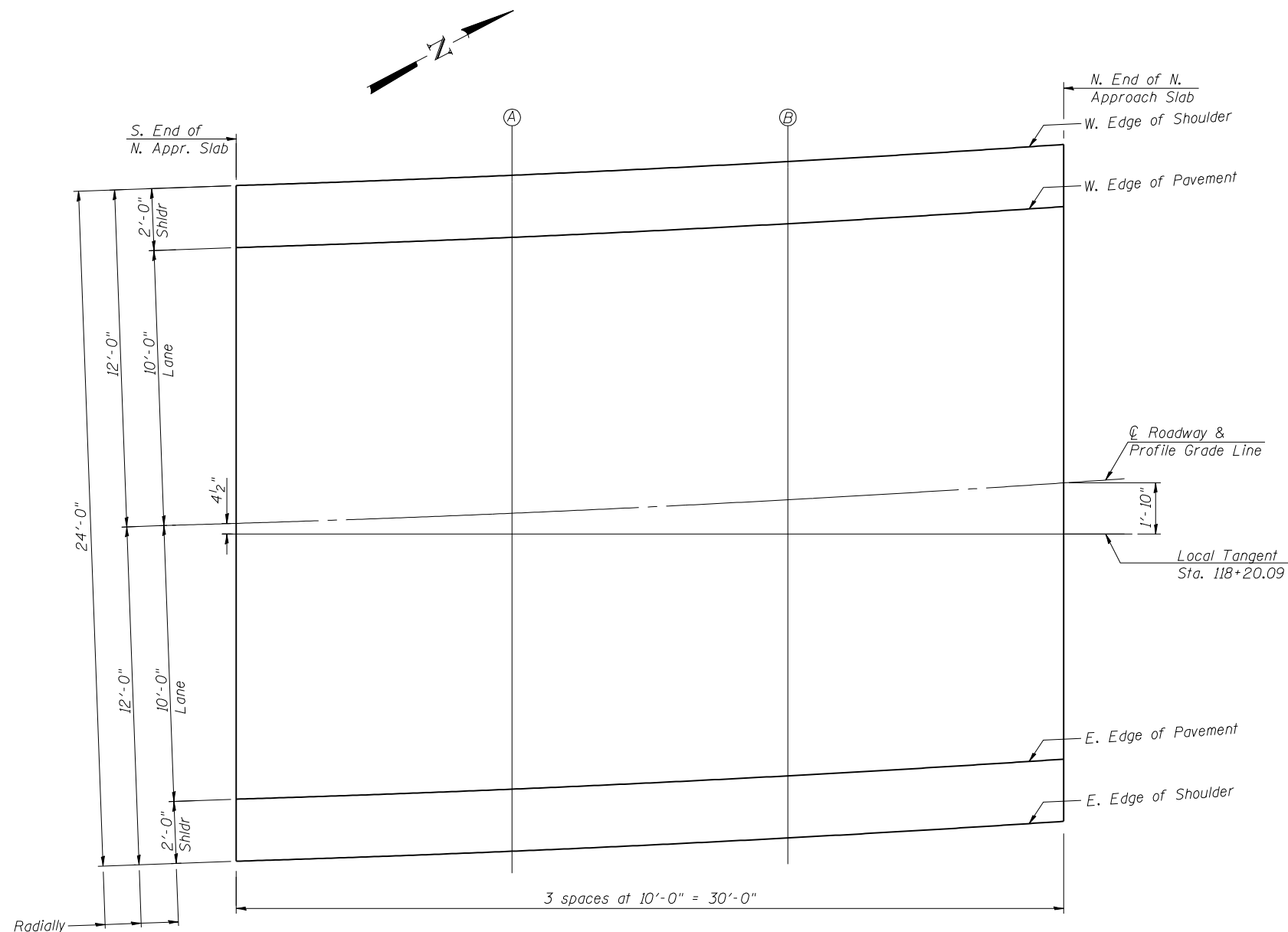
Location	Station	Offset	Theoretical Grade Elevations
S End N App Slab	11845.01	0.00	404.83
A	11855.00	0.00	404.78
B	11865.00	0.00	404.73
N End N App Slab	11875.05	0.00	404.66

EAST EDGE OF PAVEMENT

Location	Station	Offset	Theoretical Grade Elevations
S End N App Slab	11844.71	10.00	405.43
A	11854.58	10.00	405.38
B	11864.46	10.00	405.33
N End N App Slab	11874.38	10.00	405.27

EAST EDGE OF SHOULDER

Location	Station	Offset	Theoretical Grade Elevations
S End N Appr Slab	11844.65	12.00	405.55
A	11854.50	12.00	405.50
B	11864.35	12.00	405.45
N End N Appr Slab	11874.25	12.00	405.39



PLAN

FILE NAME = 74217-006-1-approach.dgn
 PROJECT NO. 00825-5

E-AS 7-1-10

Coome-Bloxdorf P.C.
 CIVIL ENGINEERS
 STRUCTURAL ENGINEERS
 LAND SURVEYORS
 Design Firm License No. 184-002703

USER NAME = .CFC.	DESIGNED - GB/MCB	REVISED -
PLOT SCALE = 5/4.000000 '1' / IN.	CHECKED - MCB	REVISED -
PLOT DATE = 7/23/2013	DRAWN - TFG	REVISED -
	CHECKED - MCB	REVISED -

**STATE OF ILLINOIS
 DEPARTMENT OF TRANSPORTATION**

**TOP OF NORTH APPROACH SLAB ELEVATIONS
 STRUCTURE NO. 093-0024**

SHEET NO. 6 OF 24 SHEETS

F.A. RTE.	SECTION	COUNTY	TOTAL SHEETS	SHEET NO.
1B	(12A)B-1	WABASH	52	28
CONTRACT NO. 74217				
ILLINOIS FED. AID PROJECT				