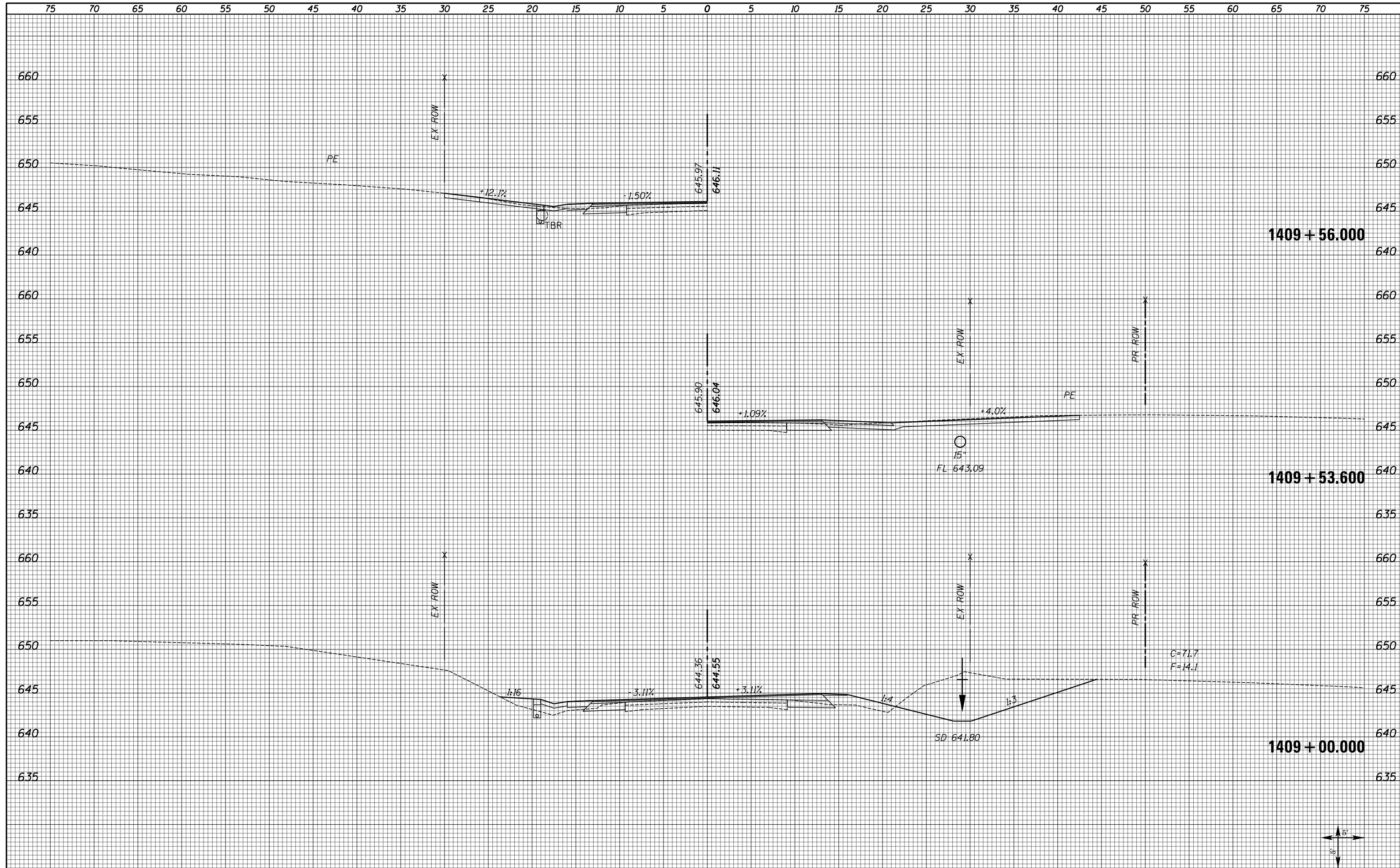


DATE	
BY	
FINAL SURVEY	SURVEYED
NOTE BOOK	PLOTTED
NO.	TEMPLATE
	AREAS
	CHECKED

DATE	
BY	
ORIGINAL SURVEY	SURVEYED
NOTE BOOK	PLOTTED
NO.	TEMPLATE
	AREAS
	CHECKED



FILE NAME = XS_SHEETS-NEW.dgn	USER NAME = notel	DESIGNED -	REVISÉ -	<b>STATE OF ILLINOIS</b> <b>DEPARTMENT OF TRANSPORTATION</b>	<b>FAS 1597 (IL 96)</b> <b>CROSS SECTIONS</b>		F.A.S. RTE. 1597	SECTION 14 (W, RS-7)	COUNTY ADAMS/PIKE	TOTAL SHEETS 152	SHEET NO. 134	
	PLOT SCALE = 10.0000' / in.	CHECKED -	REVISÉ -		SCALE: SHOWN	SHEET NO. 59 OF 72 SHEETS	STA. 1409+00.000	STA. 1409+56.000	CONTRACT NO. 72781			
	PLOT DATE = 8/16/2013	DATE -	REVISÉ -		ILLINOIS FED. AID PROJECT							
<div style="text-align: right;"> </div>												