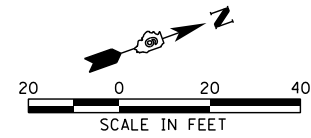
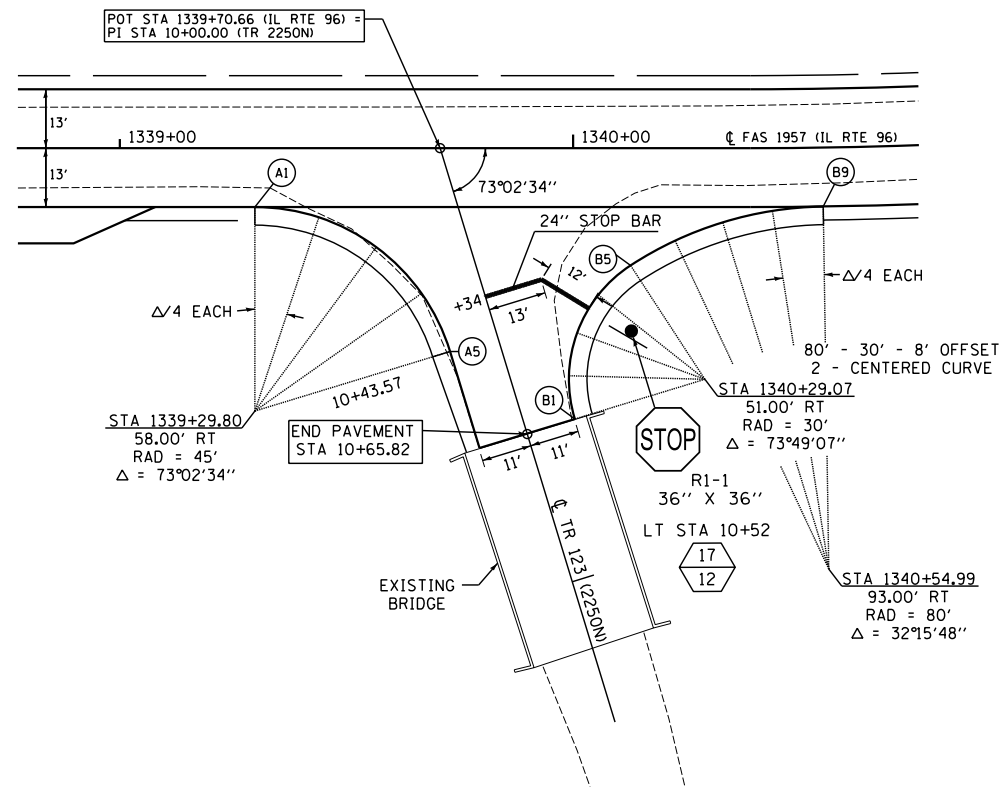


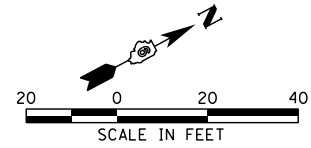
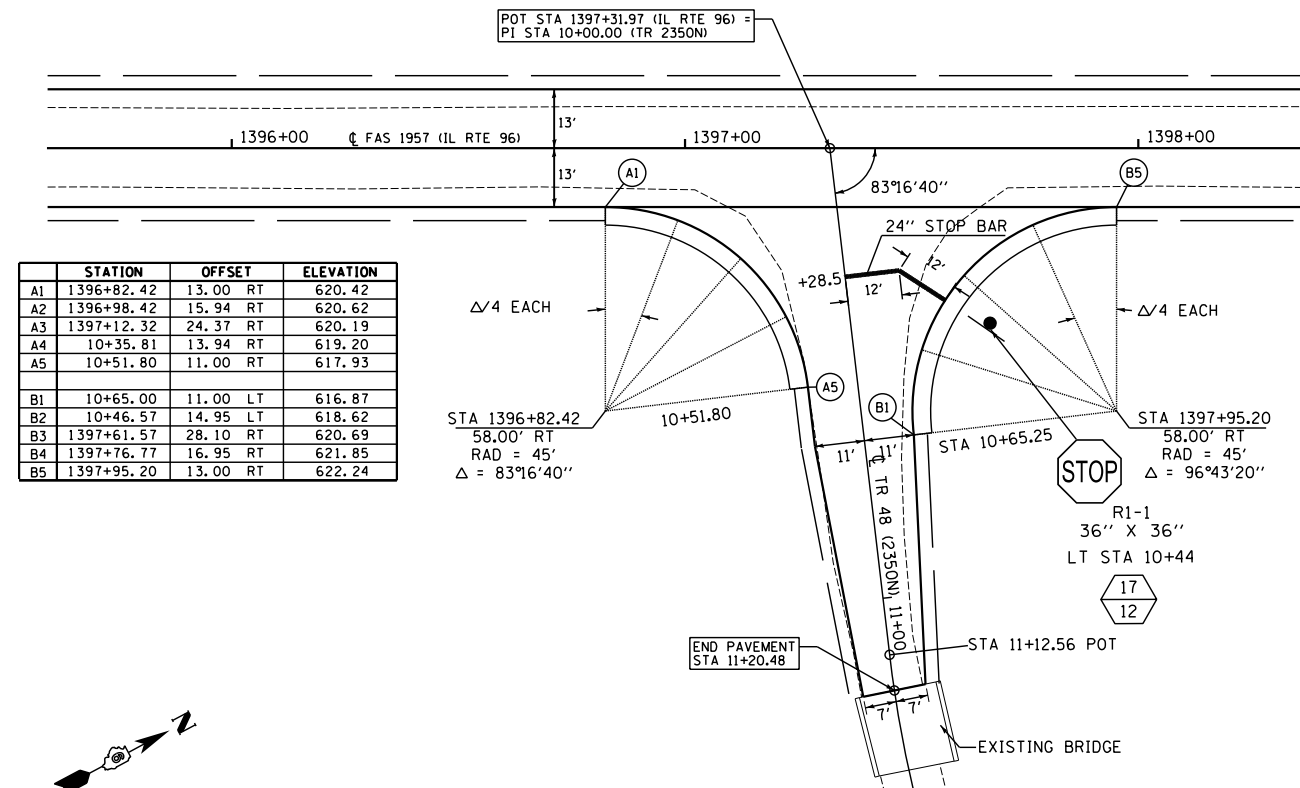
F.A.S. RTE.	SECTION	COUNTY	TOTAL SHEETS	SHEET NO.
1597	14 (W, RS-7)	ADAMS/PIKE	152	64
FED. ROAD DIST. NO. 6		ILLINOIS	FED. AID PROJECT	

	STATION	OFFSET	ELEVATION
A1	1339+29.80	13.00 RT	531.21
A2	1339+43.90	15.27 RT	531.48
A3	10+16.78	19.84 RT	531.72
A4	10+29.46	13.27 RT	531.52
A5	10+43.56	11.00 RT	531.23
B1	10+65.82	11.00 LT	530.72
B2	10+56.32	12.54 LT	531.04
B3	10+47.80	17.01 LT	531.35
B4	10+41.14	23.95 LT	531.82
B5	1340+12.67	25.88 RT	532.37
B6	1340+22.50	20.41 RT	532.81
B7	1340+33.01	16.37 RT	533.13
B8	1340+43.91	13.85 RT	533.40
B9	1340+54.99	13.00 RT	533.61

• MATCH EXISTING

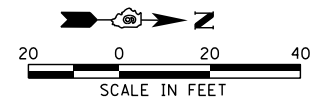
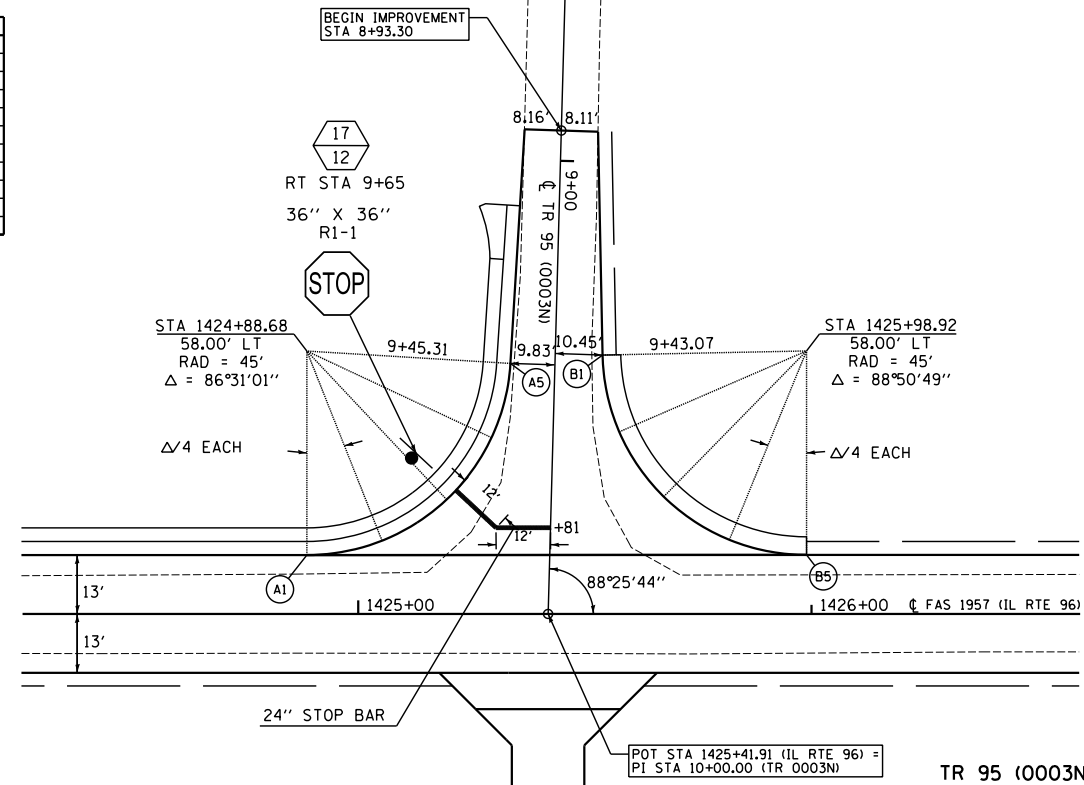


TR 123 (2250N)

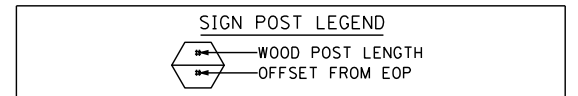


TR 48 (2350N)

	STATION	OFFSET	ELEVATION
A1	1424+88.68	13.00 LT	664.65
A2	1425+05.26	16.17 LT	664.73
A3	9+75.40	23.08 RT	664.91
A4	9+61.45	13.55 RT	665.61
A5	9+44.98	9.83 RT	666.63
B1	9+42.57	10.45 LT	666.67
B2	9+59.40	14.59 LT	665.77
B3	9+73.42	24.79 LT	665.23
B4	1425+81.90	16.36 LT	665.26
B5	1425+98.92	13.03 LT	665.46



TR 95 (0003N)



REVISIONS	
NAME	DATE

ILLINOIS DEPARTMENT OF TRANSPORTATION
 INTERSECTION DETAILS
 SHEET 1 OF 1
 FAS 1597 (IL 96)
 SECTION 14 (W, RS-7)
 ADAMS/PIKE COUNTY

SCALE: VERT. _____
 HORIZ. _____
 DATE _____
 DRAWN BY: NEL
 CHECKED BY: DBS

DATE: _____
 BY: _____
 PLAN: _____
 REVISIONS: _____
 NOTE BOOK: _____
 NO.: _____

DATE: _____
 BY: _____
 PROFILE: _____
 REVISIONS: _____
 NOTE BOOK: _____
 NO.: _____

8/16/2013 9:18:47 AM

FILE#