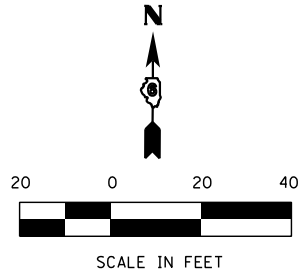
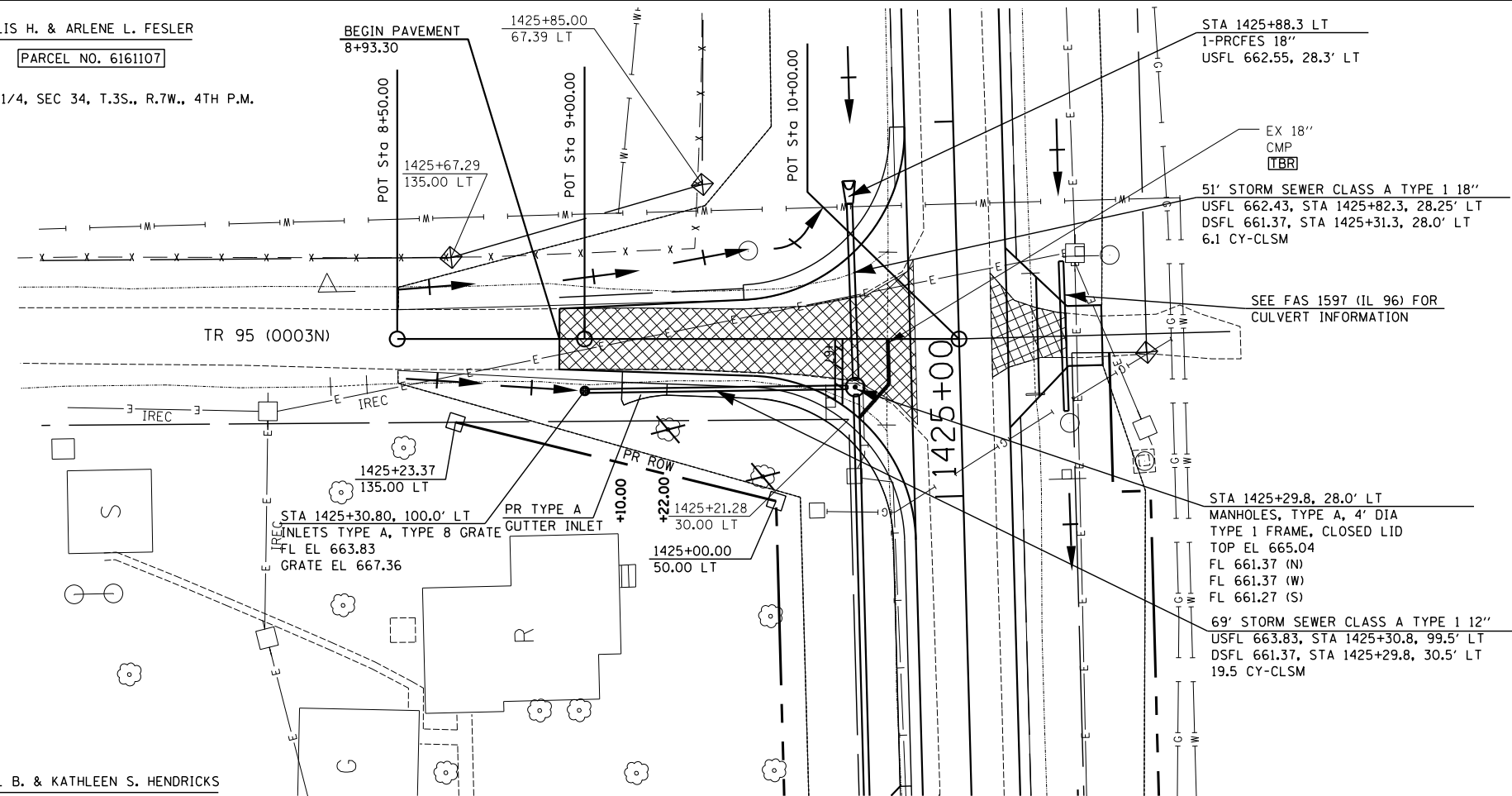


F.A.S. RTE.	SECTION	COUNTY	TOTAL SHEETS	SHEET NO.
1597	14 (W, RS-7)	ADAMS/PIKE	152	40
STA. 8+93.30		TO STA. 10+00.00		
FED. ROAD DIST. NO. 6		ILLINOIS FED. AID PROJECT		

ELLIS H. & ARLENE L. FESLER  
 PARCEL NO. 6161107  
 S.E. 1/4, SEC 34, T.3S., R.7W., 4TH P.M.



PLAN	SURVEYED	BY	DATE
NO.	FILE NAME		



CARL B. & KATHLEEN S. HENDRICKS

BM #111 - SET CHSLD "□" ON S. HDW ON EAST SIDE OF IL 96 AT COUNTY LINE  
 STA 1425+27.7, 19.3' RT, EL = 664.83

PROFILE	SURVEYED	BY	DATE
NO.	STRUCTURE NOTATIONS CHKD		

