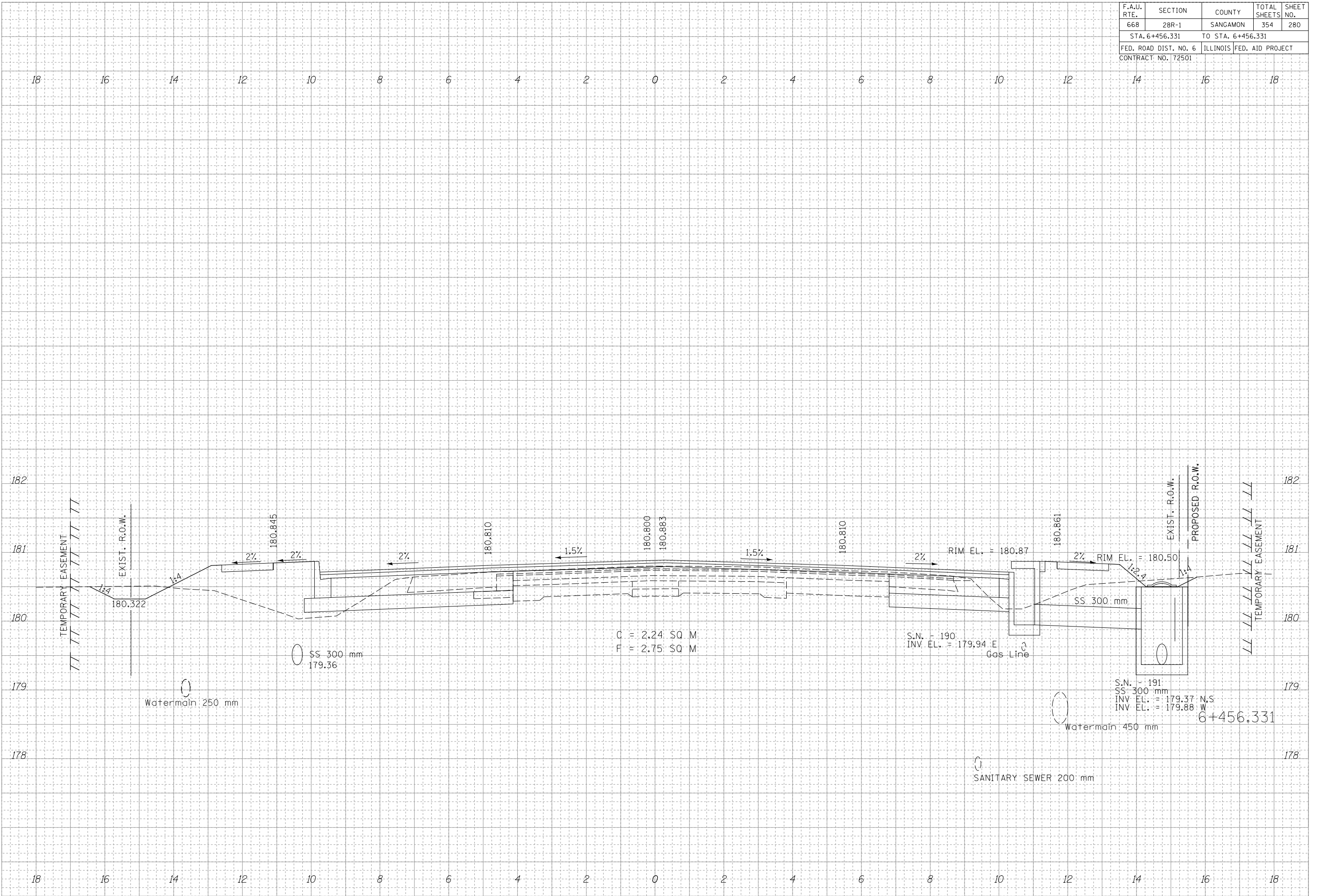


F.A.U. RTE.	SECTION	COUNTY	TOTAL SHEETS	SHEET NO.
668	28R-1	SANGAMON	354	280
STA. 6+456.331		TO STA. 6+456.331		
FED. ROAD DIST. NO. 6		ILLINOIS	FED. AID PROJECT	
CONTRACT NO. 72501				

FINAL SURVEY	DATE
SURVEYED	
NOTED	
REVISIONS	
AREAS	
CHECKED	
NO.	

ORIGINAL SURVEY	DATE
SURVEYED	
NOTED	
REVISIONS	
AREAS	
CHECKED	
NO.	



C = 2.24 SQ M  
F = 2.75 SQ M

S.N. - 190  
INV. EL. = 179.94 E  
Gas Line

S.N. - 191  
SS 300 mm  
INV. EL. = 179.37 N.S  
INV. EL. = 179.88 W  
Watermain 450 mm  
6+456.331

SANITARY SEWER 200 mm