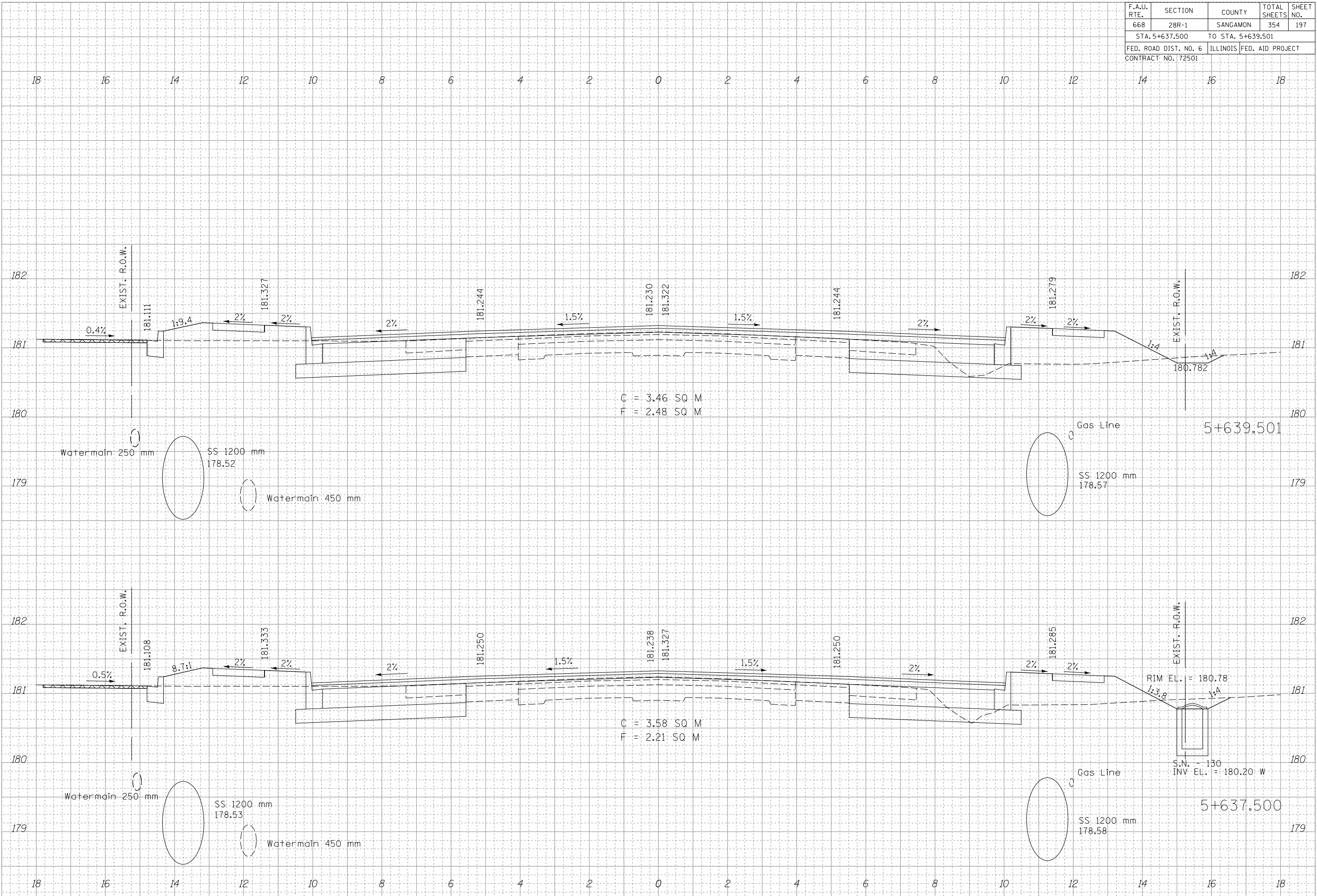


F.A.U. RTE.	SECTION	COUNTY	TOTAL SHEETS	SHEET NO.
668	28R-1	SANGAMON	354	197
STA. 5+637.500 TO STA. 5+639.501				
FED. ROAD DIST. NO. 6		ILLINOIS	FED. AID PROJECT	
CONTRACT NO. 72501				



C = 3.46 SQ M
F = 2.48 SQ M

C = 3.58 SQ M
F = 2.21 SQ M

RIM EL. = 180.78
S.N. = 130
INV. EL. = 180.20 W

FINAL SURVEY SURVEYED
NOTE BOOK NO.
DATE

ORIGINAL SURVEY SURVEYED
NOTE BOOK NO.
DATE