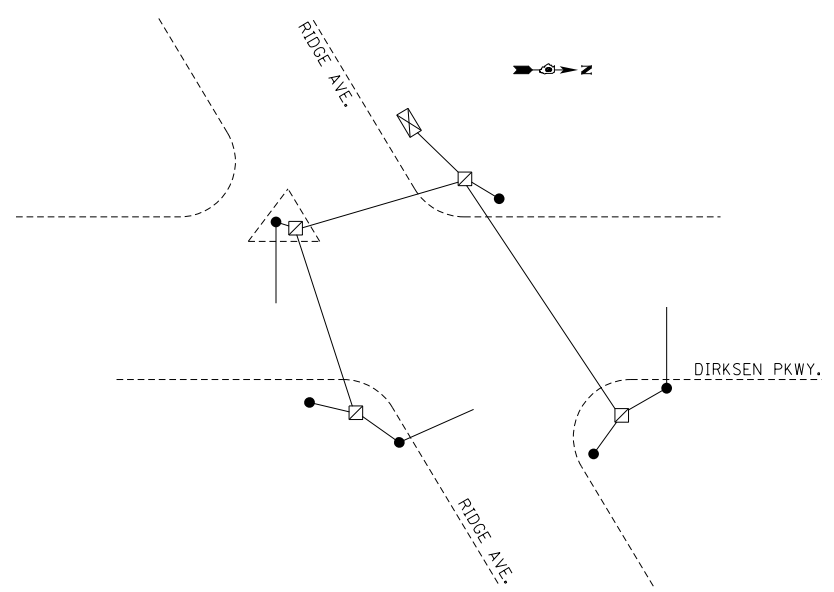
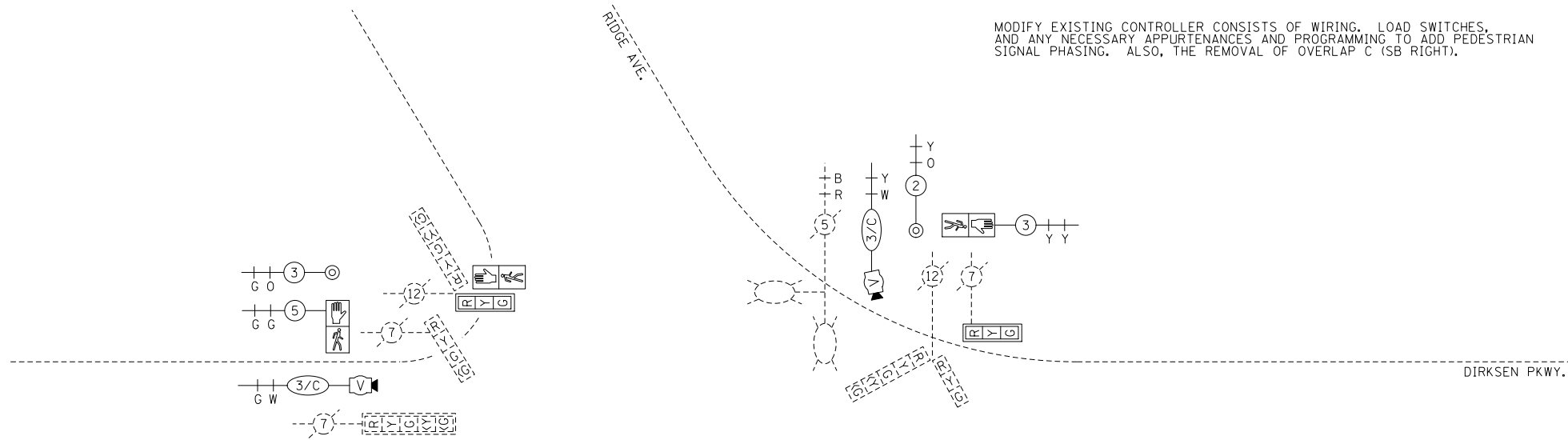
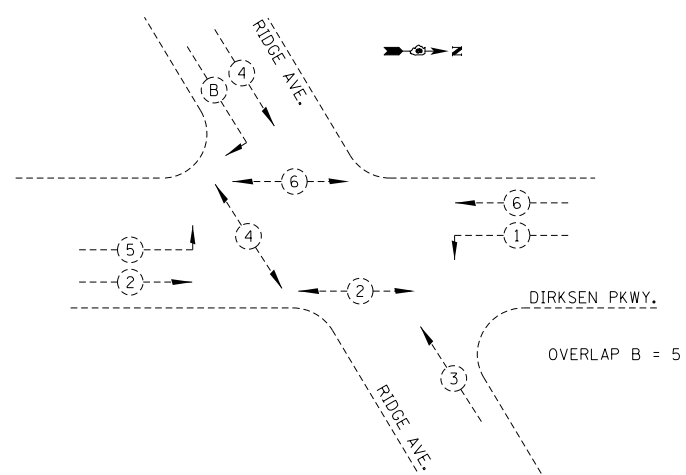
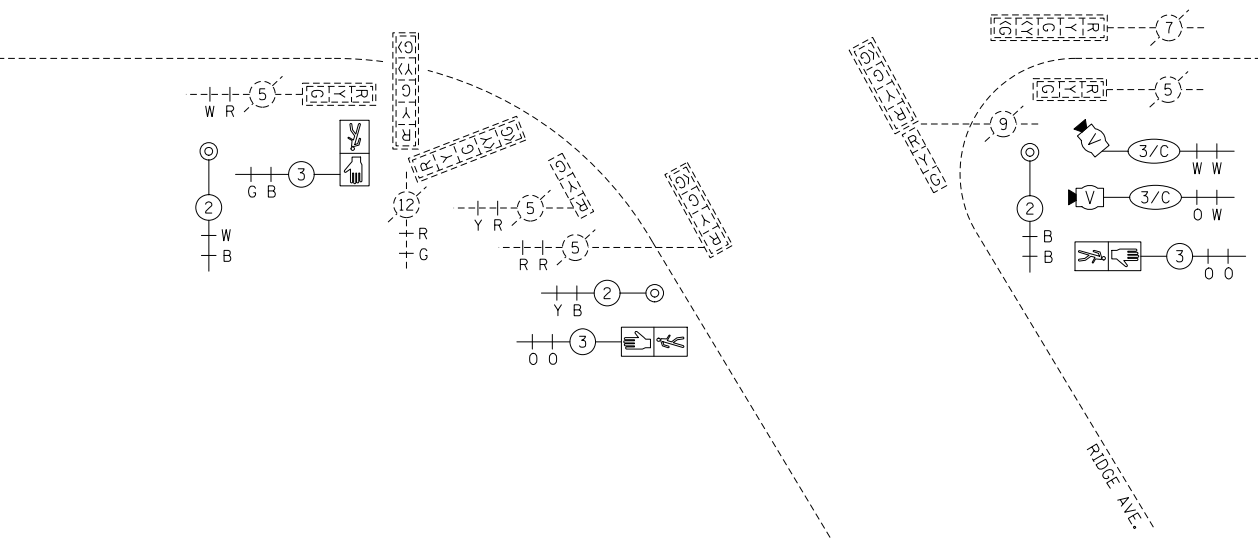


EXISTING CONTROLLER

MODIFY EXISTING CONTROLLER CONSISTS OF WIRING, LOAD SWITCHES, AND ANY NECESSARY APPURTENANCES AND PROGRAMMING TO ADD PEDESTRIAN SIGNAL PHASING. ALSO, THE REMOVAL OF OVERLAP C (SB RIGHT).



GROUNDING SCHEMATIC



PHASE DESIGNATION DIAGRAM

OVERLAP B = 5

NOT TO SCALE

USER NAME = Plotted by Scott PLOT SCALE = 83.2827' / in. PLOT DATE =	DESIGNED -	REVISED -	STATE OF ILLINOIS DEPARTMENT OF TRANSPORTATION	PROPOSED CABLE PLAN DIRKSEN PKWY. & RIDGE AVE.			F.A.P. RTE.	SECTION	COUNTY	TOTAL SHEETS	SHEET NO.
	DRAWN -	REVISED -					668	28R-1	SANGAMON	354	160
	CHECKED -	REVISED -					CONTRACT NO. 72501				
	DATE -	REVISED -					ILLINOIS FED. AID PROJECT				
			SCALE:	SHEET	OF	SHEETS	STA.	TO	STA.		

FILE NAME = ...ridge cable 2.dgn