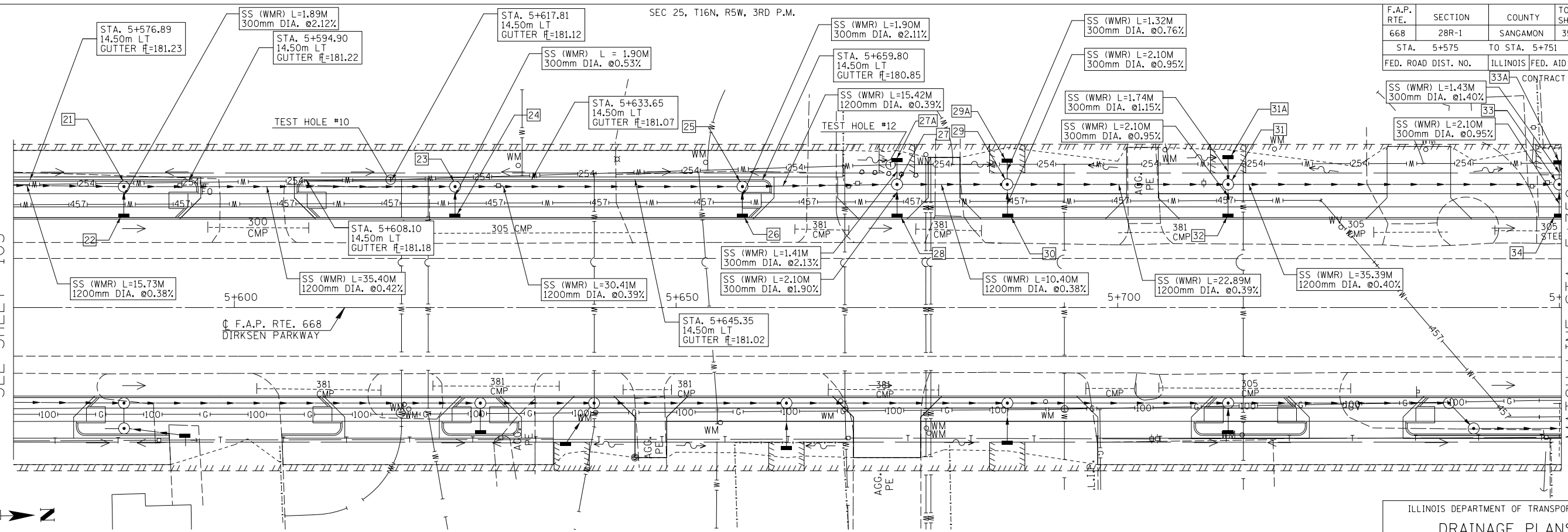


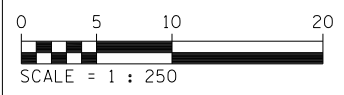
F.A.P. RTE.	SECTION	COUNTY	TOTAL SHEETS	SHEET NO.
668	28R-1	SANGAMON	354	104
STA. 5+575 TO STA. 5+751		ILLINOIS FED. AID PROJECT		
FED. ROAD DIST. NO.		CONTRACT NO. 72501		

FINAL SURVEY PLOTTED	DATE
NOTE BOOK TEMPLATE	
AREAS CHECKED	
NO.	

MATCH LINE STA. 5+575  
SEE SHEET 103



MATCH LINE STA. 5+750  
SEE SHEET 105

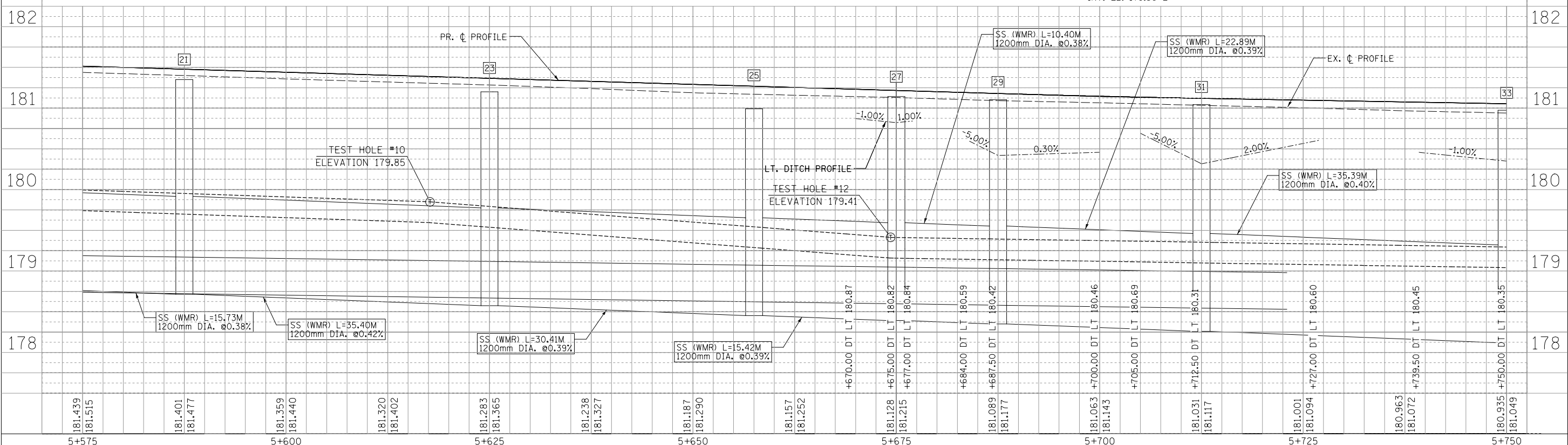


- 21 STA. 5+587.50; 14.33m LT. MH TY A 2.1m DIA. W/ TY 15 F&L RIM EL.=181.35 INV. EL.=178.72 N,S INV. EL.=180.45 E
- 22 STA. 5+587.50; 10.20m LT. INL TY A W/ TY 15 F&L RIM EL.=181.46 INV. EL.=180.49 W
- 23 STA. 5+625; 14.33m LT. MH TY A 2.1m DIA. W/ TY 15 F&L RIM EL.=181.20 INV. EL.=178.57 N,S INV. EL.=180.32 E
- 24 STA. 5+625; 10.20m LT. INL TY A W/ TY 15 F&L RIM EL.=181.35 INV. EL.=180.36 W
- 25 STA. 5+657.52; 14.33m LT. MH TY A 2.1m DIA. W/ TY 15 F&L RIM EL.=180.99 INV. EL.=178.45 N,S INV. EL.=180.15 E
- 26 STA. 5+657.52; 10.20m LT. INL TY A W/ TY 15 F&L RIM EL.=181.25 INV. EL.=180.19 W
- 27A STA. 5+675; 16.71m LT. INL TY A W/ TY 8 G RIM EL.=180.82 INV. EL.=179.89 E

ILLINOIS DEPARTMENT OF TRANSPORTATION  
**DRAINAGE PLANS**  
**DIRKSEN PARKWAY - LT**  
STA. 5+575 TO STA. 5+750  
DRAWN BY: GE  
DATE: 06/2013 CHECKED BY: FML

ORIGINAL SURVEY PLOTTED	DATE
NOTE BOOK TEMPLATE	
AREAS CHECKED	
NO.	

- 27 STA. 5+675; 13.95m LT. MH TY A 2.1m DIA. W/ TY 1 F&CL RIM EL.=181.14 INV. EL.=178.39 N,S INV. EL.=179.86 E,W
- 28 STA. 5+675; 10.20m LT. INL TY A W/ TY 15 F&L RIM EL.=181.20 INV. EL.=179.90 W
- 29A STA. 5+687.50; 16.63m LT. INL TY A W/ TY 8 G RIM EL.=180.42 INV. EL.=179.80 E
- 29 STA. 5+687.50; 13.95m LT. MH TY A 2.1m DIA. W/ TY 1 F&CL RIM EL.=181.10 INV. EL.=178.35 N,S INV. EL.=179.78 W
- 30 STA. 5+687.50; 10.20m LT. INL TY A W/ TY 15 F&L RIM EL.=181.16 INV. EL.=179.78 W
- 31A STA. 5+712.50; 17.04m LT. INL TY A W/ TY 8 G RIM EL.=180.31 INV. EL.=179.69 E
- 31 STA. 5+712.5; 13.95m LT. MH TY A 2.1m DIA. W/ TY 1 F&CL RIM EL.=181.04 INV. EL.=178.26 N,S INV. EL.=179.67 W
- 32 STA. 5+712.5; 10.20m LT. INL TY A W/ TY 15 F&L RIM EL.=181.10 INV. EL.=179.72 W
- 33A STA. 5+750; 16.75m LT. INL TY A W/ TY 8 G RIM EL.=180.35 INV. EL.=179.56 E
- 33 STA. 5+750; 13.95m LT. MH TY A 2.1m DIA. W/ TY 1 F&CL RIM EL.=180.97 INV. EL.=178.12 N,S INV. EL.=179.63 E
- 34 STA. 5+750; 10.20m LT. INL TY A W/ TY 15 F&L RIM EL.=181.03 INV. EL.=179.65 W



181.439	181.515	181.401	181.477	181.359	181.440	181.320	181.402	181.283	181.365	181.238	181.327	181.187	181.290	181.157	181.252	181.128	181.215	181.089	181.177	181.063	181.143	181.031	181.117	181.001	181.094	180.963	181.072	180.935	181.049
5+575		5+600		5+625		5+650		5+675		5+700		5+725		5+750															