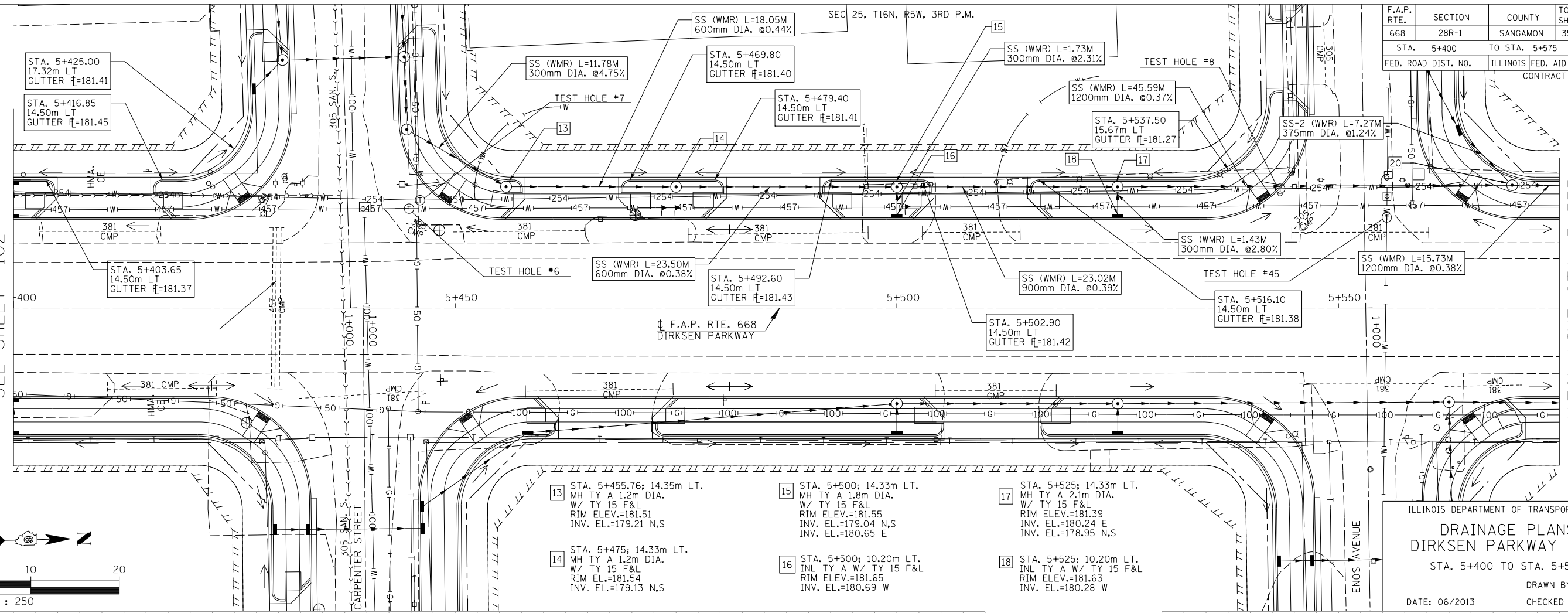


F.A.P. RTE.	SECTION	COUNTY	TOTAL SHEETS	SHEET NO.
668	28R-1	SANGAMON	354	103
STA. 5+400 TO STA. 5+575		ILLINOIS FED. AID PROJECT		
FED. ROAD DIST. NO.		CONTRACT NO. 72501		

FINAL SURVEY PLOTTED	BY	DATE
NOTE BOOK TEMPLATE		
AREAS CHECKED		
NO.		

MATCH LINE STA. 5+400
SEE SHEET 102

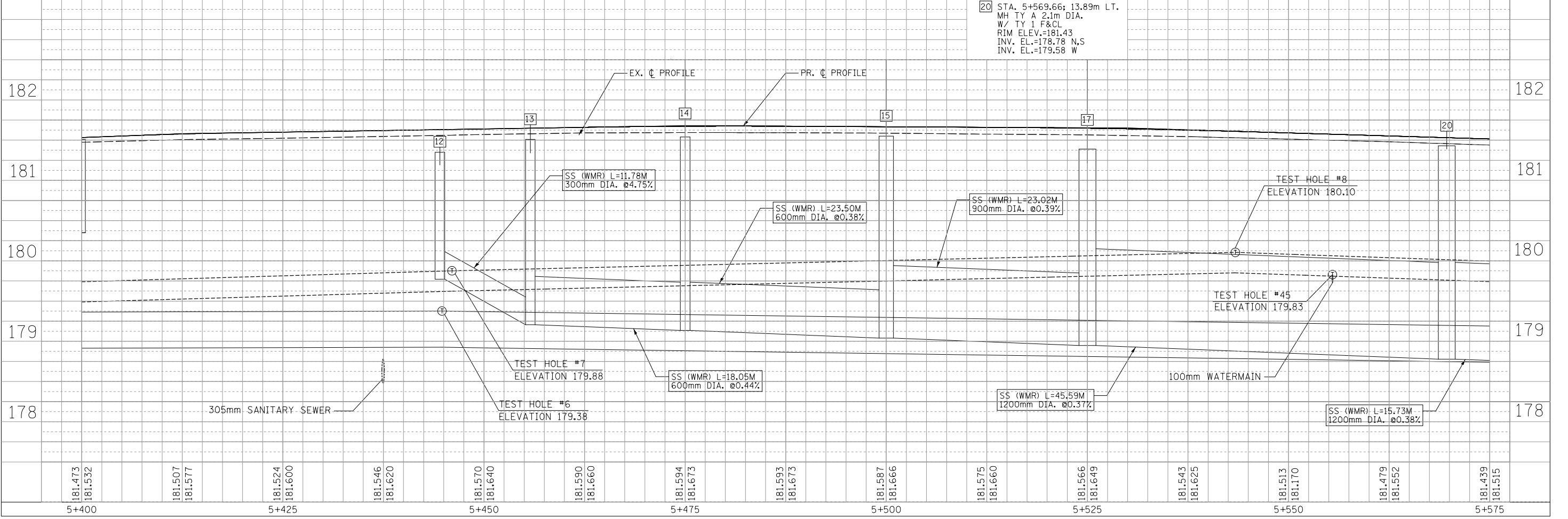
MATCH LINE STA. 5+575
SEE SHEET 104



- 13 STA. 5+455.76; 14.35m LT.
MH TY A 1.2m DIA.
W/ TY 15 F&L
RIM ELEV.=181.51
INV. EL.=179.21 N,S
- 14 STA. 5+475; 14.33m LT.
MH TY A 1.2m DIA.
W/ TY 15 F&L
RIM ELEV.=181.54
INV. EL.=179.13 N,S
- 15 STA. 5+500; 14.33m LT.
MH TY A 1.8m DIA.
W/ TY 15 F&L
RIM ELEV.=181.55
INV. EL.=179.04 N,S
INV. EL.=180.65 E
- 16 STA. 5+500; 10.20m LT.
INL TY A W/ TY 15 F&L
RIM ELEV.=181.65
INV. EL.=180.69 W
- 17 STA. 5+525; 14.33m LT.
MH TY A 2.1m DIA.
W/ TY 15 F&L
RIM ELEV.=181.39
INV. EL.=180.24 E
INV. EL.=178.95 N,S
- 18 STA. 5+525; 10.20m LT.
INL TY A W/ TY 15 F&L
RIM ELEV.=181.63
INV. EL.=180.28 W
- 20 STA. 5+569.66; 13.89m LT.
MH TY A 2.1m DIA.
W/ TY 1 F&L
RIM ELEV.=181.43
INV. EL.=178.78 N,S
INV. EL.=179.58 W

ILLINOIS DEPARTMENT OF TRANSPORTATION
DRAINAGE PLANS
DIRKSEN PARKWAY - LT
STA. 5+400 TO STA. 5+575
DRAWN BY: GE
DATE: 06/2013
CHECKED BY: FML

ORIGINAL SURVEY PLOTTED	BY	DATE
NOTE BOOK TEMPLATE		
AREAS CHECKED		
NO.		



181.473 181.532 181.507 181.577 181.524 181.600 181.546 181.620 181.570 181.640 181.590 181.660 181.594 181.673 181.593 181.673 181.587 181.666 181.575 181.660 181.566 181.649 181.543 181.625 181.513 181.170 181.479 181.552 181.439 181.515