

| F.A.P. RTE. | SECTION | COUNTY | TOTAL SHEETS | SHEET NO. |
|-------------|---------|----------|--------------|-----------|
| 668 | 28R-1 | SANGAMON | 354 | 102 |

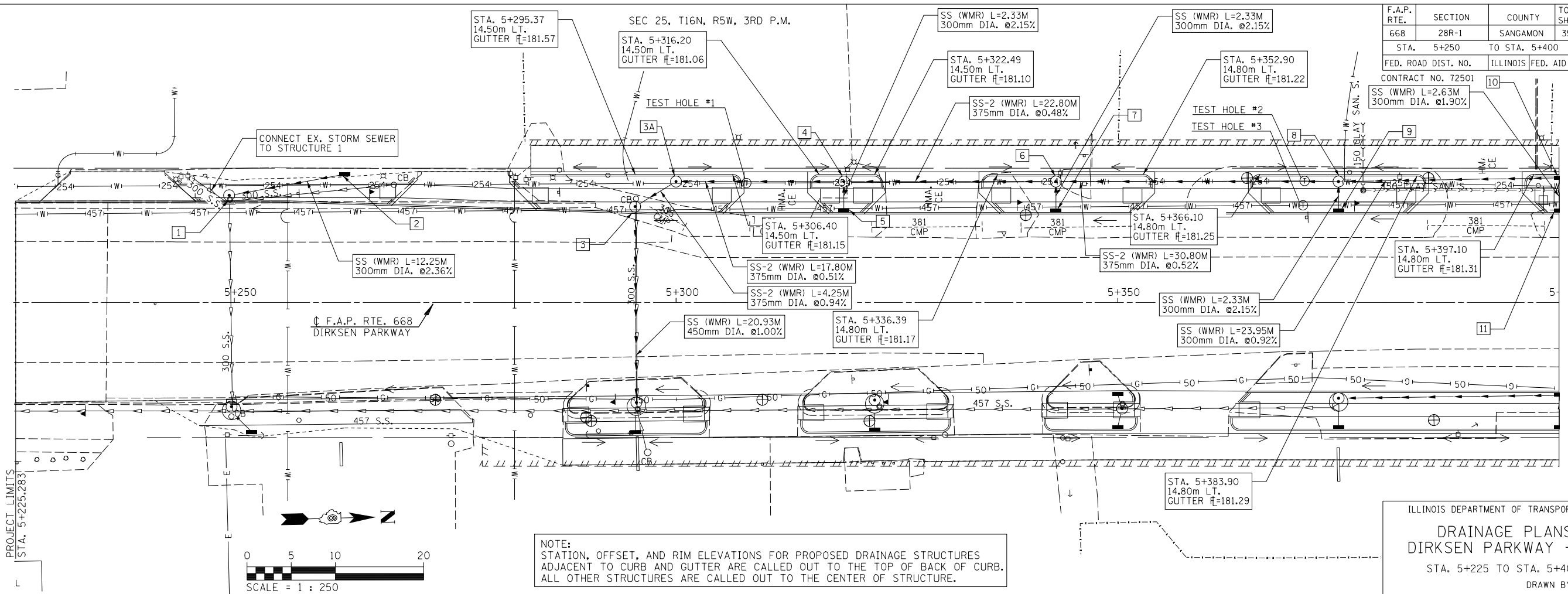
STA. 5+250 TO STA. 5+400

FED. ROAD DIST. NO. ILLINOIS FED. AID PROJECT

CONTRACT NO. 72501

SS (WMR) L=2.63M 300mm DIA. @1.90%

| | |
|----------------------|------|
| FINAL SURVEY PLOTTED | DATE |
| NOTE BOOK TEMPLATE | |
| AREAS CHECKED | |
| NO. | |



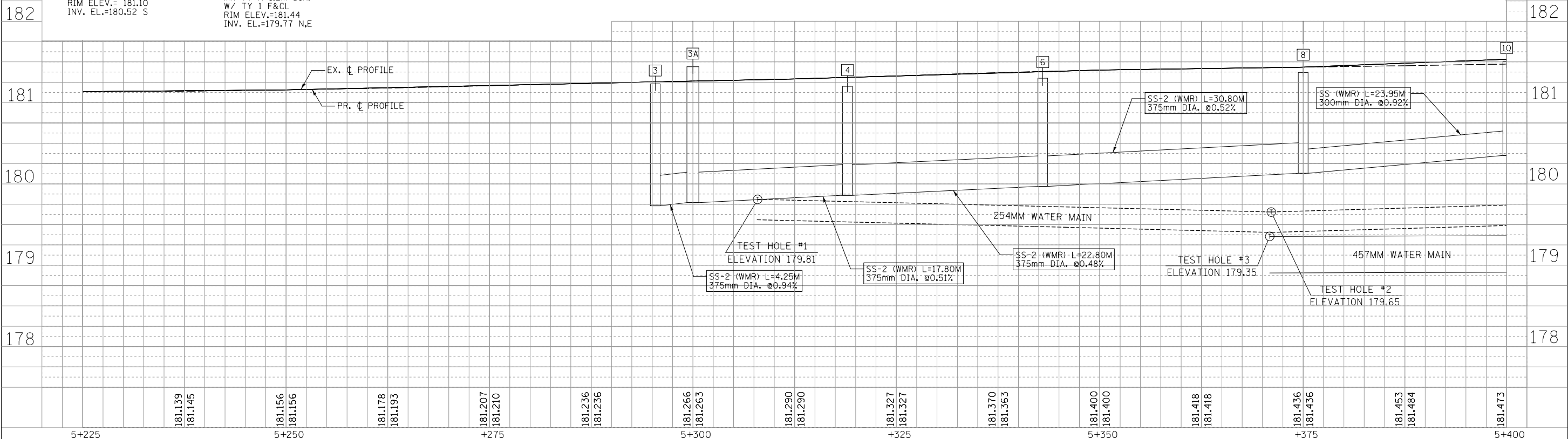
NOTE:
STATION, OFFSET, AND RIM ELEVATIONS FOR PROPOSED DRAINAGE STRUCTURES ADJACENT TO CURB AND GUTTER ARE CALLED OUT TO THE TOP OF BACK OF CURB. ALL OTHER STRUCTURES ARE CALLED OUT TO THE CENTER OF STRUCTURE.

ILLINOIS DEPARTMENT OF TRANSPORTATION
DRAINAGE PLANS
DIRKSEN PARKWAY - LT
STA. 5+225 TO STA. 5+400
DRAWN BY: GE
DATE: 06/2013 CHECKED BY: FML

MATCH LINE STA. 5+400
SEE SHEET 103

- 1 STA. 5+249.42; 11.52m LT. MH TY A 1.2m DIA. W/ TY 15 F&L RIM ELEV.= 181.11 INV. EL.=180.23 N INV. EL.=MATCH EX. E,S
- 2 STA. 5+262.50; 14.52m LT. INL TY A W/ TY 8 F&G RIM ELEV.= 181.10 INV. EL.=180.52 S
- 3 STA. 5+295.37; 10.25m LT. MH TY A 1.2m DIA. W/ TY 15 F&L RIM ELEV.=181.23 INV. EL.=179.73 N, E
- 3A STA. 5+300.00; 14.32m LT. MH TY A 1.2m DIA. W/ TY 1 F&L RIM ELEV.=181.44 INV. EL.=179.77 N,E
- 4 STA. 5+319; 14.33m LT. MH TY A 1,2 DIA. W/ TY 15 F&L RIM ELEV.=181.20 INV. EL.=179.86 N,S INV. EL.=180.30 E
- 5 STA. 5+319; 10.20m LT. INL TY A W/ TY 15 F&L RIM ELEV.=181.29 INV. EL.=180.35 W
- 6 STA. 5+343; 14.33m LT. MH TY A 1,2 DIA. W/ TY 15 F&L RIM ELEV.=181.30 INV. EL.=179.97 N,S INV. EL.=180.47 E
- 7 STA. 5+343; 10.2m LT. INL TY A W/ TY 15 F&L RIM ELEV.=181.36 INV. EL.=180.52 W
- 8 STA. 5+375; 14.33m LT. MH TY A 1,2 DIA. W/ TY 15 F&L RIM ELEV.=181.37 INV. EL.=180.13 N,S INV. EL.=180.53 E
- 9 STA. 5+375; 10.20m LT. INL TY A W/ TY 15 F&L RIM ELEV.= 181.42 INV. EL.=180.58 W
- 10 STA. 5+400; 14.33m LT. INL TY B W/ TY 15 F&L RIM ELEV.=181.45 INV. EL.=180.35 S,E
- 11 STA. 5+400; 10.20m LT. INL TY A W/ TY 15 F&L RIM ELEV.=181.51 INV. EL.=180.40 W

| | |
|-------------------------|------|
| ORIGINAL SURVEY PLOTTED | DATE |
| NOTE BOOK TEMPLATE | |
| AREAS CHECKED | |
| NO. | |



| | | | | | | | | | | | | | | | | | | | | | | | | | | | | |
|-------|---------|---------|-------|---------|---------|---------|---------|---------|---------|---------|---------|---------|---------|---------|---------|---------|---------|---------|---------|---------|---------|---------|---------|---------|---------|---------|---------|---------|
| 5+225 | 181.139 | 181.145 | 5+250 | 181.156 | 181.156 | 181.178 | 181.193 | 181.207 | 181.210 | 181.236 | 181.236 | 181.266 | 181.263 | 181.290 | 181.290 | 181.327 | 181.327 | 181.370 | 181.363 | 181.400 | 181.400 | 181.418 | 181.418 | 181.436 | 181.436 | 181.453 | 181.484 | 181.473 |
|-------|---------|---------|-------|---------|---------|---------|---------|---------|---------|---------|---------|---------|---------|---------|---------|---------|---------|---------|---------|---------|---------|---------|---------|---------|---------|---------|---------|---------|