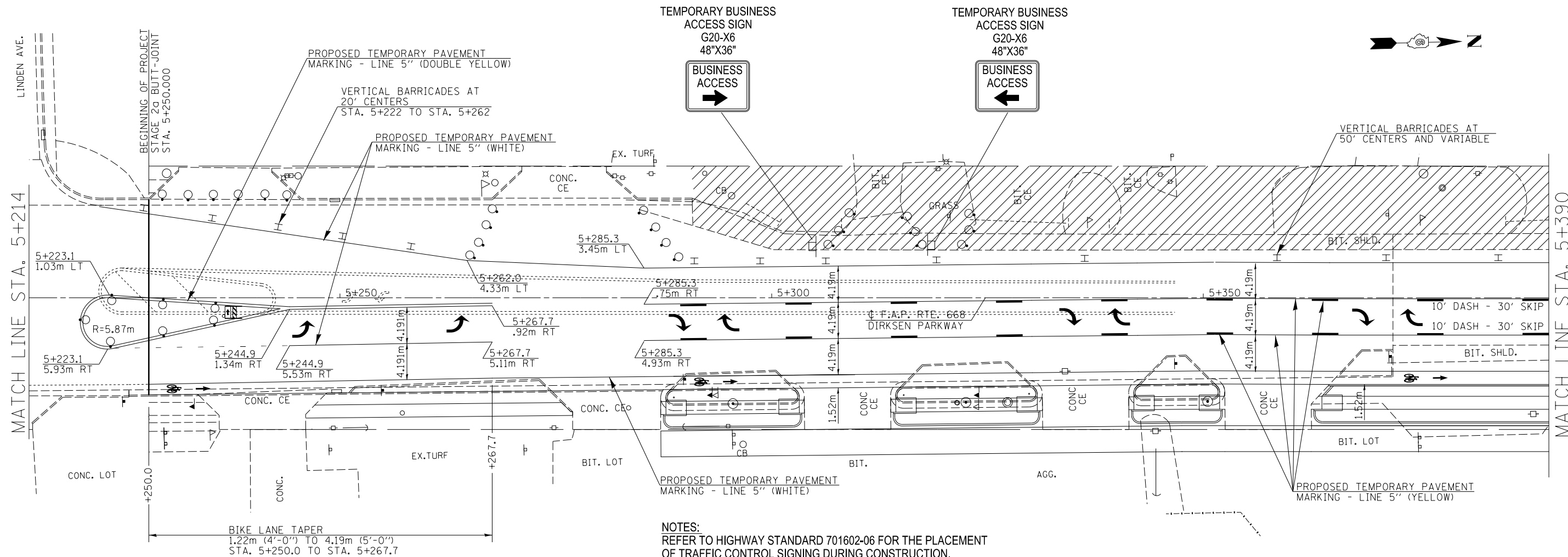


TYPICAL BUSINESS ENTRANCE DETAIL DURING CONSTRUCTION
 (ACCESS TO BUSINESSES AT ALL TIMES DURING CONSTRUCTION,
 SEE SPECIAL PROVISIONS FOR STAGED TRAFFIC CONTROL)



NOTES:
 REFER TO HIGHWAY STANDARD 701602-06 FOR THE PLACEMENT
 OF TRAFFIC CONTROL SIGNING DURING CONSTRUCTION.

PAINT SHALL BE USED FOR TEMPORARY PAVEMENT STRIPING AT:
 - THE INSIDE LEFT TURN LANE FOR EASTBOUND CLEARLAKE AVE. ONTO
 NORTHBOUND DIRKSEN PKWY.
 - ALONG DIRKSEN PKWY., FROM STA. 166+55.00 TO 172+67.26 (ENGLISH)
 AND STA. 5+210.414 TO 5+250.000 (METRIC)

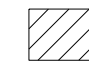

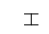

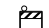
EXISTING PAVEMENT MARKINGS THAT CONFLICT WITH WORK ZONE
 TRAFFIC CONTROL ALONG DIRKSEN PKWY. FROM STA. 166+55.00 TO
 172+67.26 (ENGLISH) AND STA. 5+210.414 TO 5+250.000 (METRIC) SHALL BE
 REMOVED BY WATER BLASTING / VACUUM RECOVERY AND PAYED FOR AT
 THE UNIT PRICE PER SQUARE FOOT / SQUARE METER FOR "PAVEMENT
 MARKING REMOVAL" (SECTION 783, STANDARD SPECIFICATIONS).

WORK ZONE PAVEMENT MARKING REMOVAL ALONG DIRKSEN PKWY. FROM
 STA. 166+55.00 TO 172+67.26 (ENGLISH) AND STA. 5+210.414 TO 5+250.000
 (METRIC) SHALL BE REMOVED BY WATER BLASTING / VACUUM RECOVERY
 AND PAYED FOR AT THE UNIT PRICE PER SQUARE FOOT / SQUARE METER FOR
 "WORK ZONE PAVEMENT MARKING REMOVAL" (SECTION 703, STANDARD
 SPECIFICATIONS).

THE CONTRACTOR SHALL MAINTAIN ALL TEMPORARY PAVEMENT MARKINGS
 THROUGHOUT THE CONSTRUCTION STAGES OF THIS PROJECT.

ACCESS TO ALL BUSINESS AND RESIDENTIAL PROPERTIES SHALL BE PRESERVED
 DURING ALL STAGES OF PROPOSED CONSTRUCTION WITH APPROPRIATE
 SIGNAGE FOR BUSINESS ENTRANCES POSTED.

REFER TO THE SPECIAL PROVISIONS AND HIGHWAY STANDARD 701602-06
 FOR SIDE ROAD CLOSURE DURING ALL STAGES OF CONSTRUCTION.

-  - DESIGNATES WORK ZONE AREA DURING STAGE 1 CONSTRUCTION
-  - DRUM BARRICADE
-  - VERTICAL BARRICADE
-  - DIRECTION INDICATOR BARRICADE
-  - TYPE I OR II BARRICADE

FILE NAME =	USER NAME = Plotted by Scott	DESIGNED - RTS	REVISED -
...Temp Pavement Marking Sheets, Stage 2b.dgn		DRAWN -	REVISED -
\$MODELNAME\$	PLOT SCALE = 40.0000' / in.	CHECKED -	REVISED -
	PLOT DATE =	DATE - 05-20-13	REVISED -

**STATE OF ILLINOIS
 DEPARTMENT OF TRANSPORTATION**

STAGE CONSTRUCTION, STAGE 2b

SCALE: SHEET 4 OF 10 SHEETS STA. TO STA.

F.A.P. RTE.	SECTION	COUNTY	TOTAL SHEETS	SHEET NO.
668	28R-1	SANGAMON	354	94
			CONTRACT NO. 72501	
ILLINOIS FED. AID PROJECT				