

F.A.P. RTE.	SECTION	COUNTY	TOTAL SHEETS	SHEET NO.
668	28R-1	SANGAMON	354	89
STA. 0+900.000		TO STA. 0+959.000		
FED. ROAD DIST. NO.		ILLINOIS	FED. AID PROJECT	
CONTRACT NO. 72501				

NOTE:  
SEE DRAINAGE PLANS FOR STATION, OFFSET, AND ELEVATION INFORMATION FOR PROPOSED CURB AND GUTTER SECTIONS BEYOND PROPOSED SIDEWALK. ALL CURB AND GUTTER POINTS ARE CALLED OUT TO THE TOP OF FACE OF CURB.

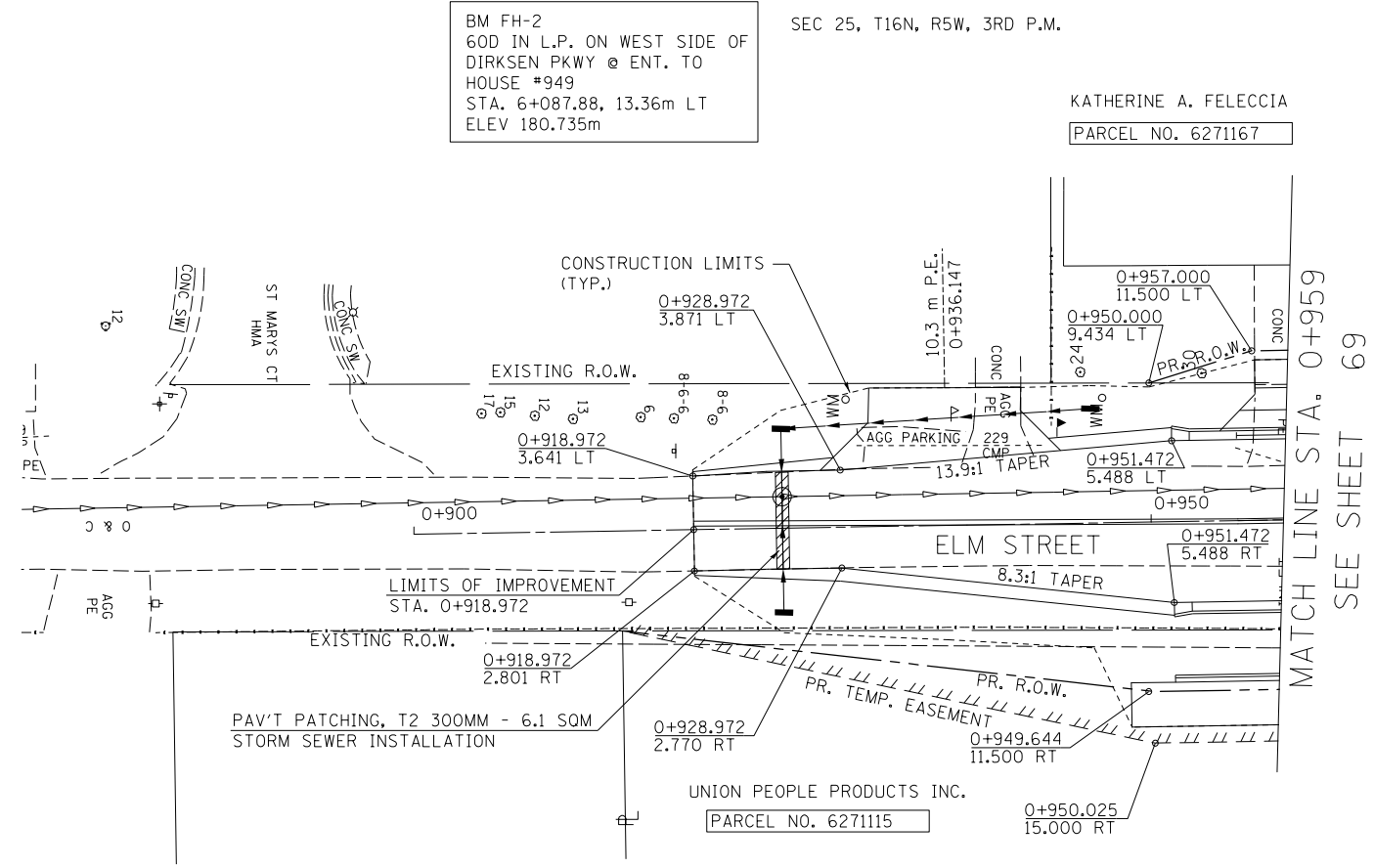
FINAL SURVEY PLOTTED	BY	DATE
NO.		
SURVEYED		
PLOTTED		
TEMPLATE		
AREAS		
CHECKED		

ORIGINAL SURVEY PLOTTED	BY	DATE
NO.		
SURVEYED		
PLOTTED		
TEMPLATE		
AREAS		
CHECKED		

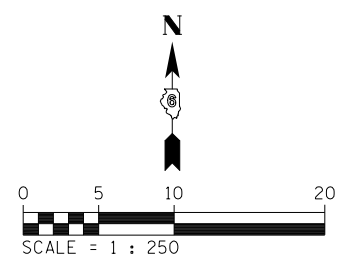
BM FH-2  
60D IN L.P. ON WEST SIDE OF  
DIRKSEN PKWY @ ENT. TO  
HOUSE #949  
STA. 6+087.88, 13.36m LT  
ELEV 180.735m

SEC 25, T16N, R5W, 3RD P.M.

KATHERINE A. FELECCIA  
PARCEL NO. 6271167



MATCH LINE STA. 0+959  
SEE SHEET 69



REVISIONS	
NAME	DATE

ILLINOIS DEPARTMENT OF TRANSPORTATION  
ROADWAY PLANS  
F.A.P. ROUTE 668 (DIRKSEN PARKWAY)  
SECTION 28R-1  
SANGAMON COUNTY

SCALE 1 : 250  
DATE 06/2013

DRAWN BY RK  
CHECKED BY FML