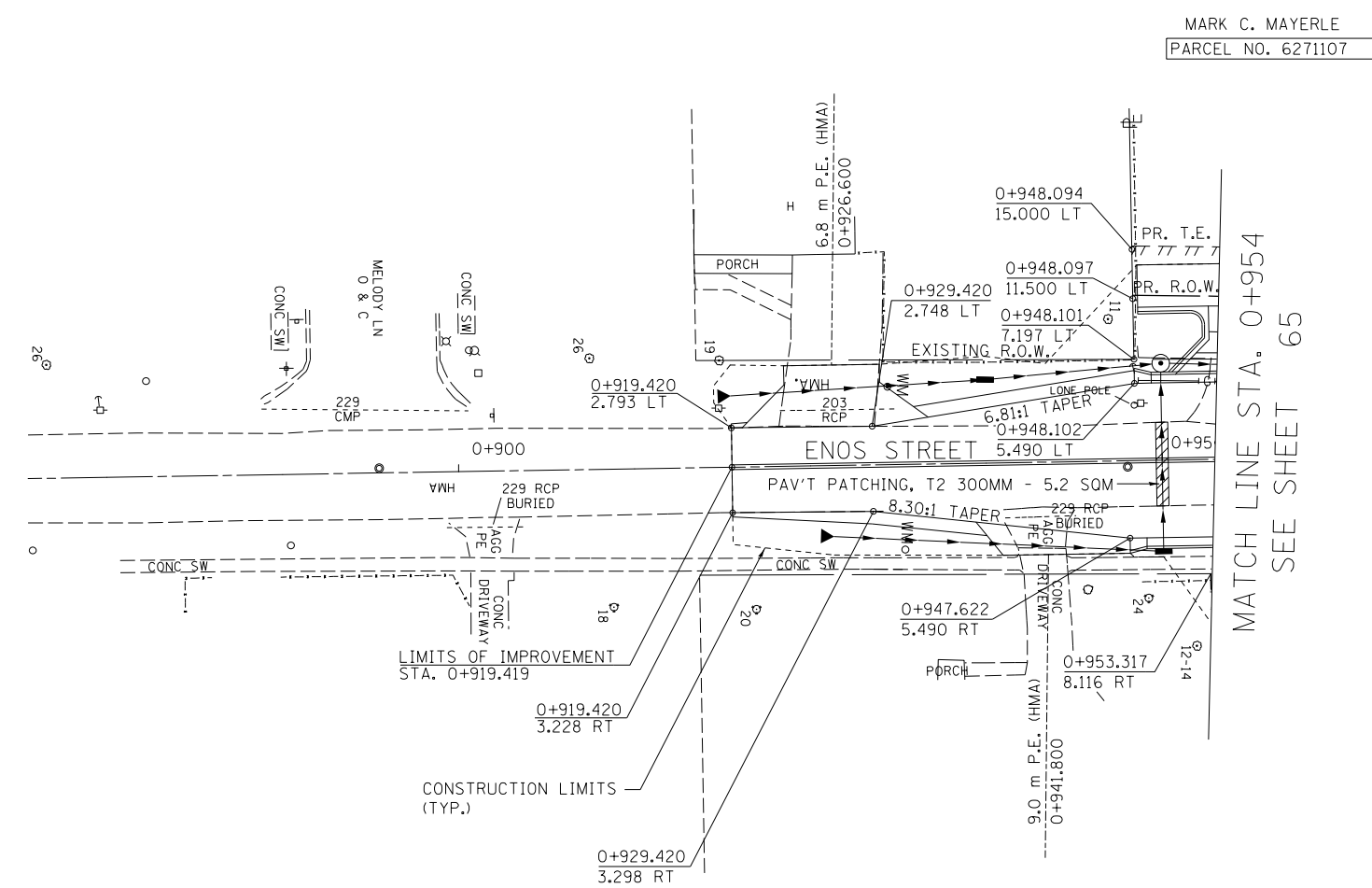


F.A.P. RTE.	SECTION	COUNTY	TOTAL SHEETS	SHEET NO.
668	28R-1	SANGAMON	354	86
STA. 0+869.000		TO STA. 0+954.000		
FED. ROAD DIST. NO.		ILLINOIS	FED. AID PROJECT	
CONTRACT NO. 72501				

NOTE:
SEE DRAINAGE PLANS FOR STATION, OFFSET, AND ELEVATION INFORMATION FOR PROPOSED CURB AND GUTTER SECTIONS BEYOND PROPOSED SIDEWALK. ALL CURB AND GUTTER POINTS ARE CALLED OUT TO THE TOP OF FACE OF CURB.

FINAL SURVEY	DATE
SURVEYED	BY
PLOTTED	
NOTE BOOK	
TEMPLATE	
AREAS	
CHECKED	
NO.	

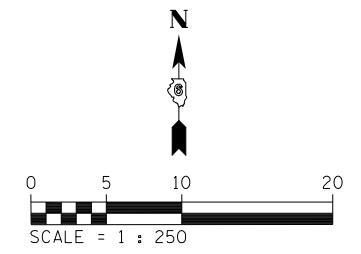
ORIGINAL SURVEY	DATE
SURVEYED	BY
PLOTTED	
NOTE BOOK	
TEMPLATE	
AREAS	
CHECKED	
NO.	



MARK C. MAYERLE
PARCEL NO. 6271107

MATCH LINE STA. 0+954
SEE SHEET 65

BM FH-4
CHIS "X" IN TOP OF F.H. @ N.W.
CORNER OF DIRKSEN PKWY
& ENOS AVE. NEXT TO
PARKWAY MOTORS
STA. 5+558.97, 15.14m LT
ELEV 181.843m



REVISIONS	
NAME	DATE

ILLINOIS DEPARTMENT OF TRANSPORTATION
ROADWAY PLANS
F.A.P. ROUTE 668 (DIRKSEN PARKWAY)
SECTION 28R-1
SANGAMON COUNTY

SCALE 1 : 250
DATE 06/2013

DRAWN BY RK
CHECKED BY FML