

NOTE:
SEE DRAINAGE PLANS FOR STATION, OFFSET, AND ELEVATION INFORMATION FOR PROPOSED CURB AND GUTTER SECTIONS BEYOND PROPOSED SIDEWALK. ALL CURB AND GUTTER POINTS ARE CALLED OUT TO THE TOP OF FACE OF CURB.

BM WS-1 CHSLD 'X' ON SE CORNER OF THE LIGHT POLE SOUTH FOUNDATION OF THE "GAS FOR LESS" STA. 5+956.24, 15.74m LT, ELEV 181.111m

F.A.P. RTE.	SECTION	COUNTY	TOTAL SHEETS	SHEET NO.
668	28R-1	SANGAMON	354	69
STA. 5+880.000 TO STA. 6+055.000				
FED. ROAD DIST. NO.		ILLINOIS	FED. AID PROJECT	
CONTRACT NO. 72501				

MANICHANH & SOMSAVATH MAHNEE
PARCEL NO. 6271118

RANDY J. TRANQUILLI
PARCEL NO. 6271117

NATHAN YOUSIF
PARCEL NO. 6271116

UNION PEOPLE PRODUCTS INC.
PARCEL NO. 6271115

MICHAEL J. O'HAGAN
PARCEL NO. 6271144

MICHAEL S. KAPSHANDY
PARCEL NO. 6271143

DARIN J. & LEANNE BRAUER
PARCEL NO. 6271166

E. EARL ROLAND
PARCEL NO. 6271142

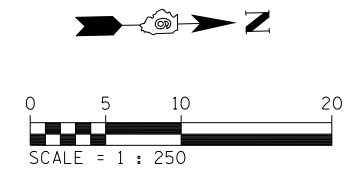
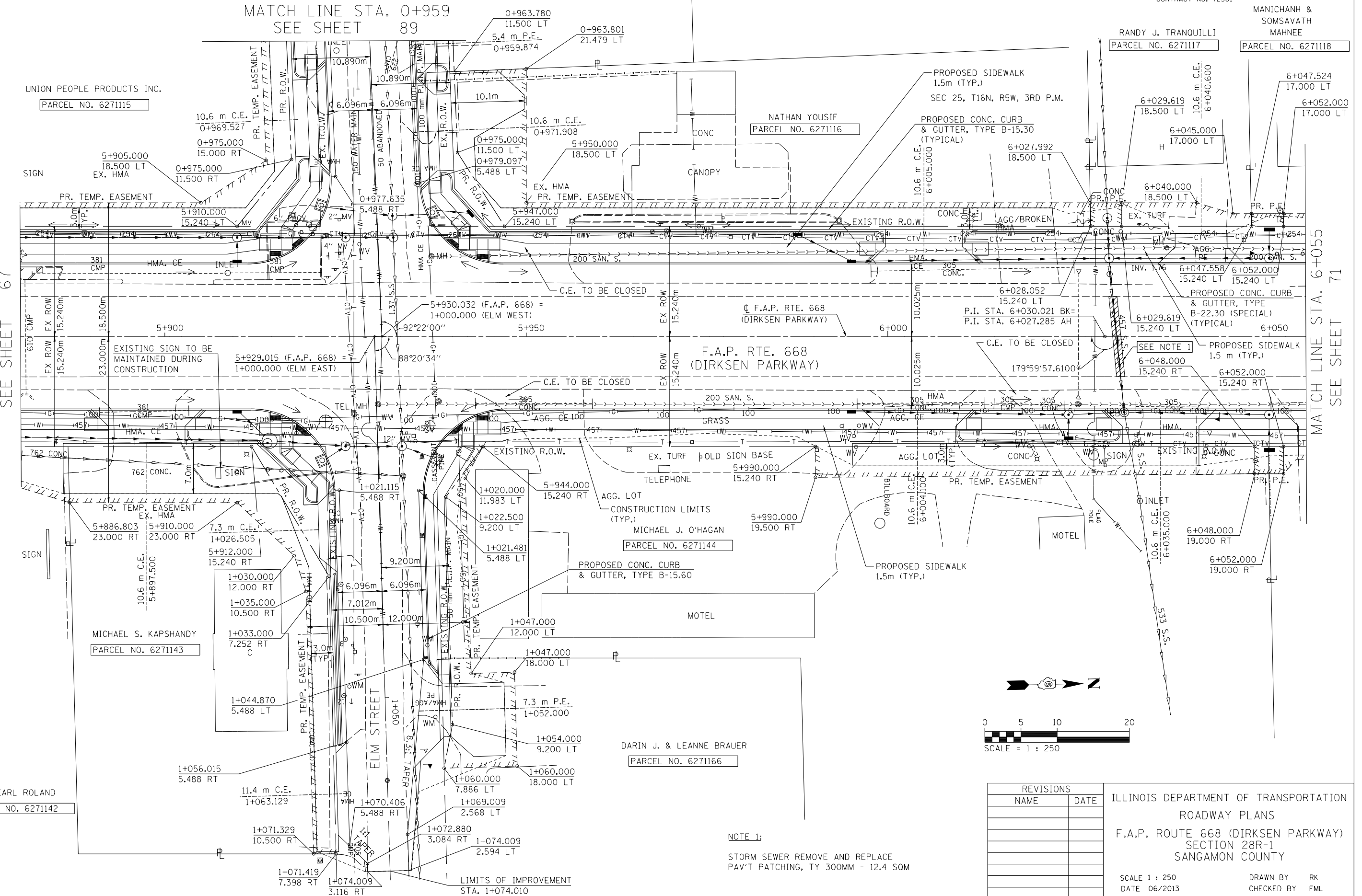
MATCH LINE STA. 0+959
SEE SHEET 89

MATCH LINE STA. 5+880
SEE SHEET 67

MATCH LINE STA. 6+055
SEE SHEET 71

BY	DATE
FINAL SURVEY PLOTTED	
NOTE BOOK TEMPLATE	
AREAS CHECKED	
NO.	

BY	DATE
ORIGINAL SURVEY PLOTTED	
NOTE BOOK TEMPLATE	
AREAS CHECKED	
NO.	



NOTE 1:
STORM SEWER REMOVE AND REPLACE
PAV'T PATCHING, TY 300MM - 12.4 SOM

REVISIONS	
NAME	DATE

ILLINOIS DEPARTMENT OF TRANSPORTATION
ROADWAY PLANS
F.A.P. ROUTE 668 (DIRKSEN PARKWAY)
SECTION 28R-1
SANGAMON COUNTY
SCALE 1 : 250
DATE 06/2013
DRAWN BY RK
CHECKED BY FML