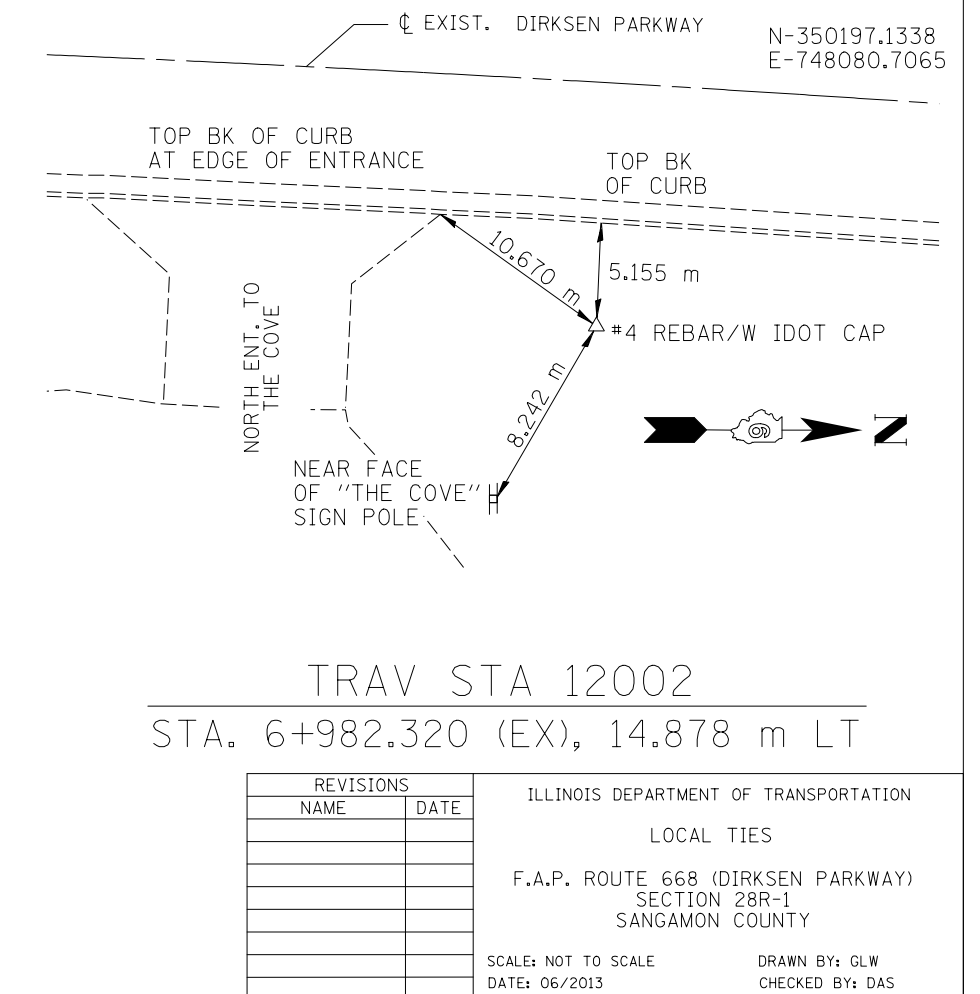
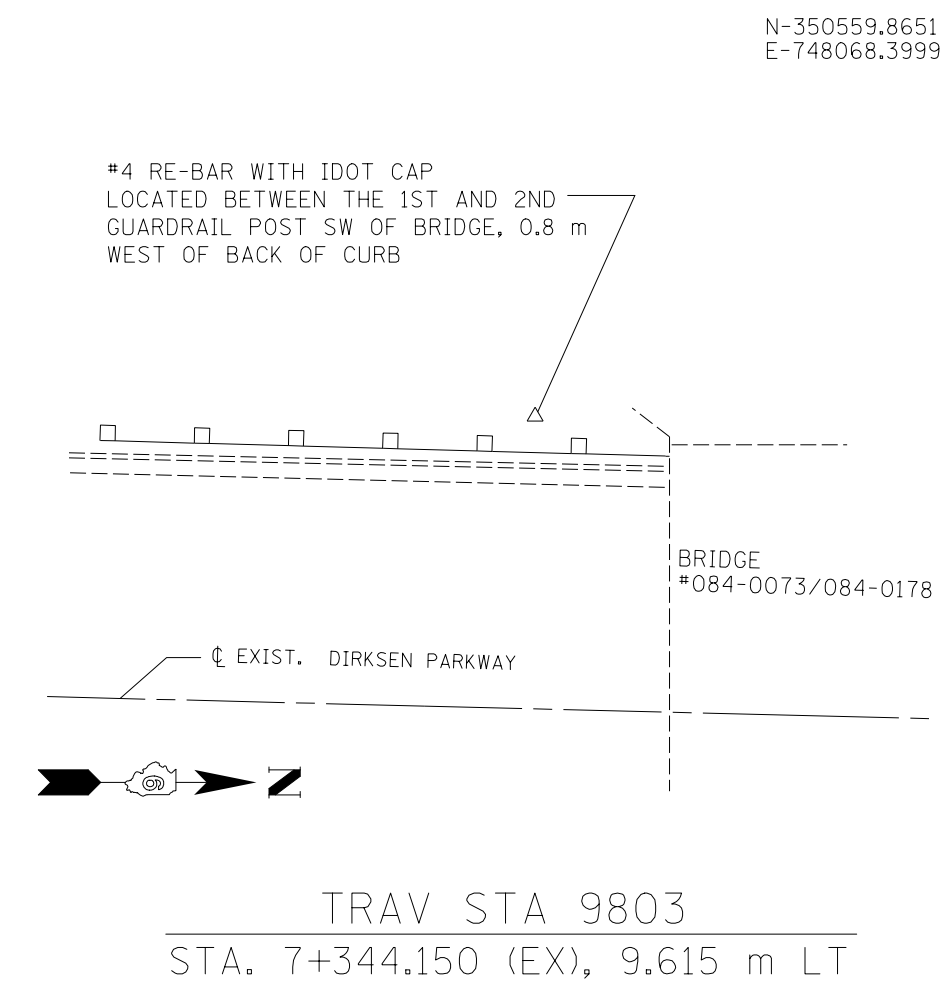
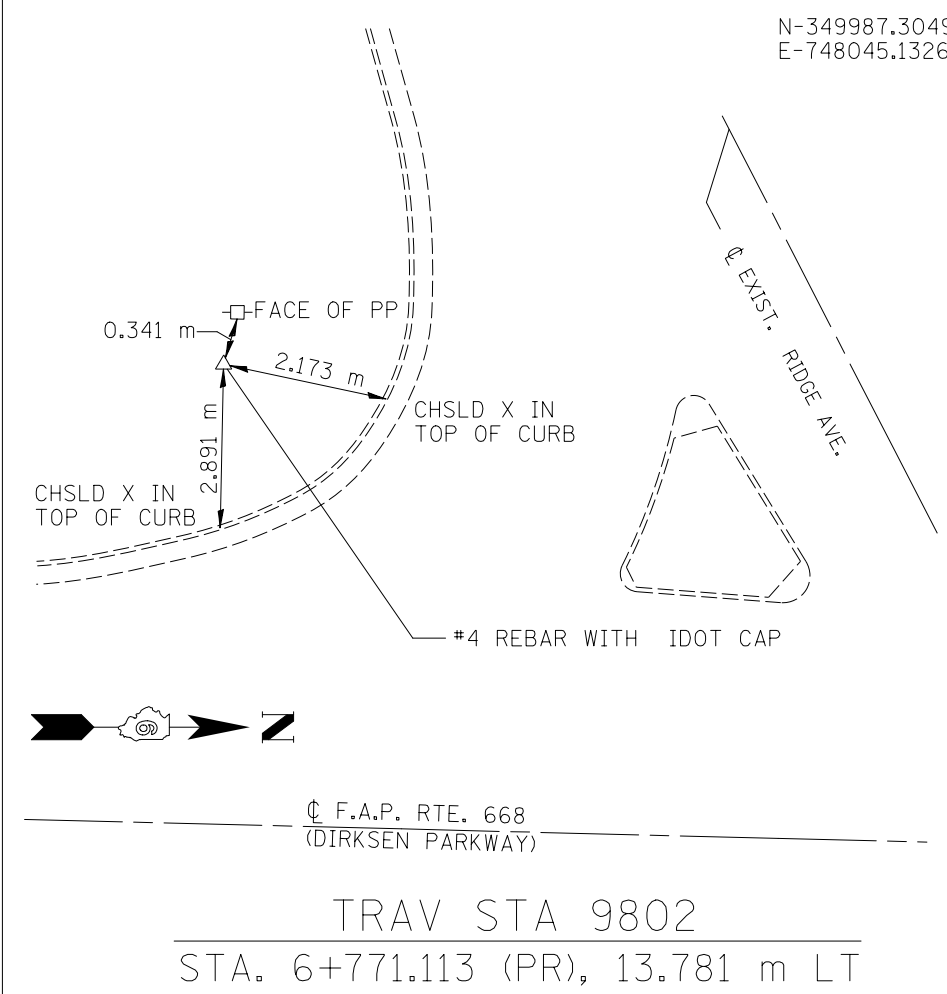
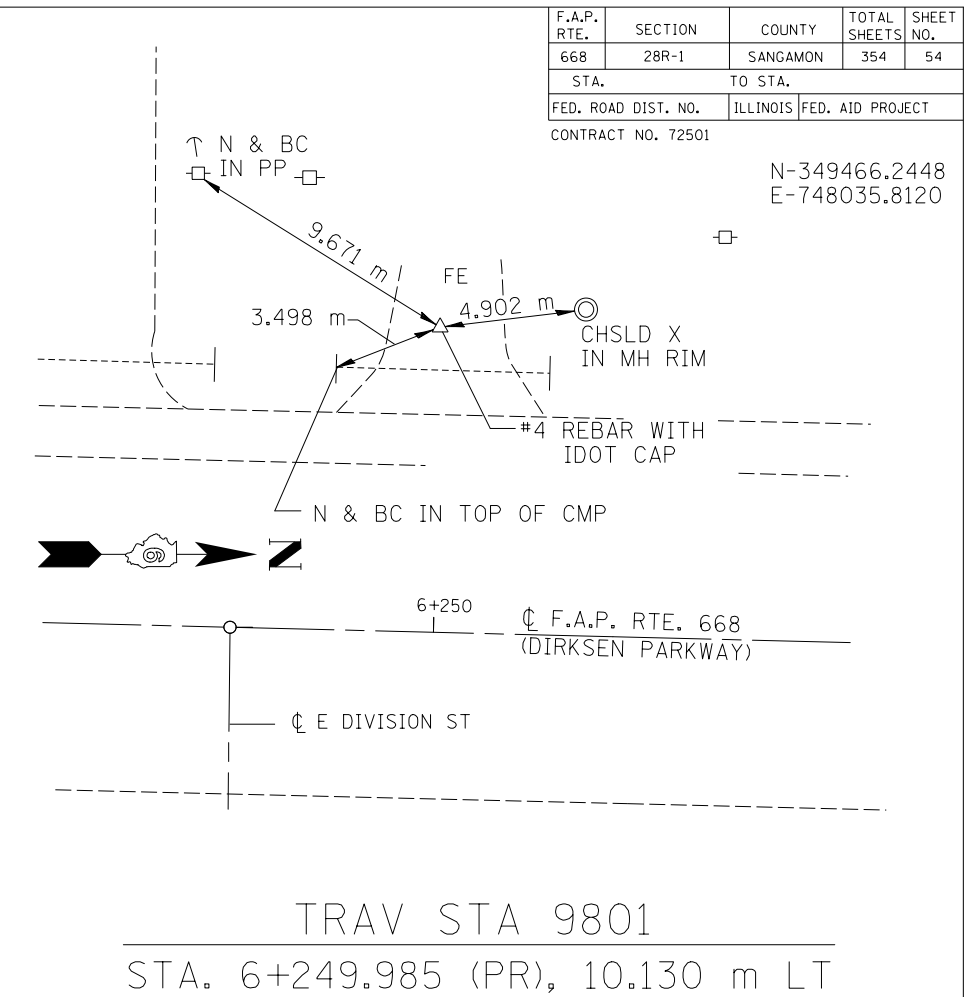
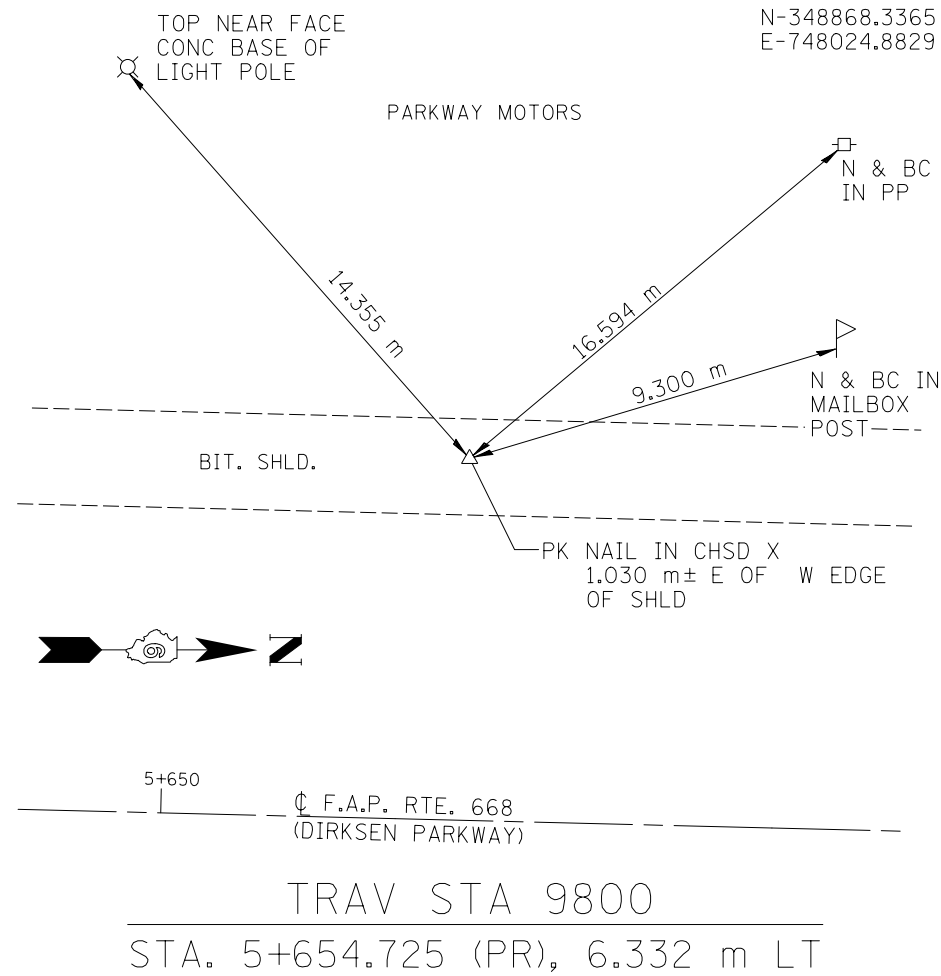


BENCHMARK DESCRIPTIONS
ELEVATIONS ARE BASED ON NGVD29 VERTICAL DATUM

- BM AW-2 CHSLD X ON N. SIDE OF N.E. BOLT OF PARKWAY MOTORS SIGN S.W. QUAD OF DIRKSEN AND LIDEN AVE. STA. 5+200.25, 17.53 m LT. ELEV. 181.094
- BM FH-5 CHSLD X IN TOP BOLT OF FIRE HYDRANT IN S.W. CORNER OF INTERSECTION OF DIRKSEN PKWY & CARPENTER ST. STA. 5+430.87, 14.99 m LT. ELEV. 181.670
- BM TJMSR1 CHSLD X IN TOP BOLT OF FIRE HYDRANT IN SE QUAD. OF DIRKSEN AND ENOS AVE. STA. 5+544.92, 14.41 m RT. ELEV. 181.902
- BM TJMSR2 CHSLD X IN TOP SW GUARDPOST OF ROLAND MACHINERY SIGN, E. SIDE OF DIRKSEN, SO. OF ROLAND MACH. BLDG. STA. 5+761.11, 15.97 m RT. ELEV. 181.626
- BM TJMSR3 CHSLD SQUARE SE COR OF LIGHT FND. OF "GAS FOR LESS", NW QUAD DIRKSEN AND ELM, SO. MOST LIGHT FND STA. 5+956.24, 15.74 m LT. ELEV. 181.299
- BM FH-2 60D NAIL IN LP ON WEST SIDE OF DIRKSEN PKWY @ ENT. TO HOUSE #949 STA. 6+087.88, 13.36 LT. ELEV. 180.727
- BM TJMSR4 CHSLD X IN TOP SE BOLT OF FIRE HYDRANT ON W. SIDE OF DIRKSEN, S. OF HOUSE # 1025 STA. 6+155.99, 12.5 m LT. ELEV. 180.427
- BM TJMSR5 CHSLD X IN TOP SE BOLT OF FIRE HYDRANT ON W. SIDE OF DIRKSEN, IN FRONT OF COM MICROFILE STA. 6+435.20, 12.09 m LT. ELEV. 181.332
- BM TJMSR6 CHSLD SQUARE IN NW COR OF CONC SIGNAL FND SE QUAD DIRKSEN & RIDGE AVE. ELEV. 178.242
- BM TJMSR7 CHSLD X IN TOP SE BOLT OF FIRE HYDRANT 150' ± W. OF DIRKSEN ON RIDGE AVE. IN FRONT OF CASEY'S GEN. ELEV 178.584
- BM FH-1 60D NAIL IN PP IN NE QUAD OF KEYS & DIRKSEN PKWY STA. 7+026.63, 14.34 m RT. ELEV. 179.763
- BM AW-1 CHSLD SQUARE IN NW END OF PARAPET WALL OF BRIDGE # 084-0073/084-0178 STA. 7+480.35, 9.1 m LT. ELEV. 188.929



REVISIONS	
NAME	DATE

ILLINOIS DEPARTMENT OF TRANSPORTATION	
LOCAL TIES	
F.A.P. ROUTE 668 (DIRKSEN PARKWAY)	
SECTION 28R-1	
SANGAMON COUNTY	
SCALE: NOT TO SCALE	DRAWN BY: GLW
DATE: 06/2013	CHECKED BY: DAS