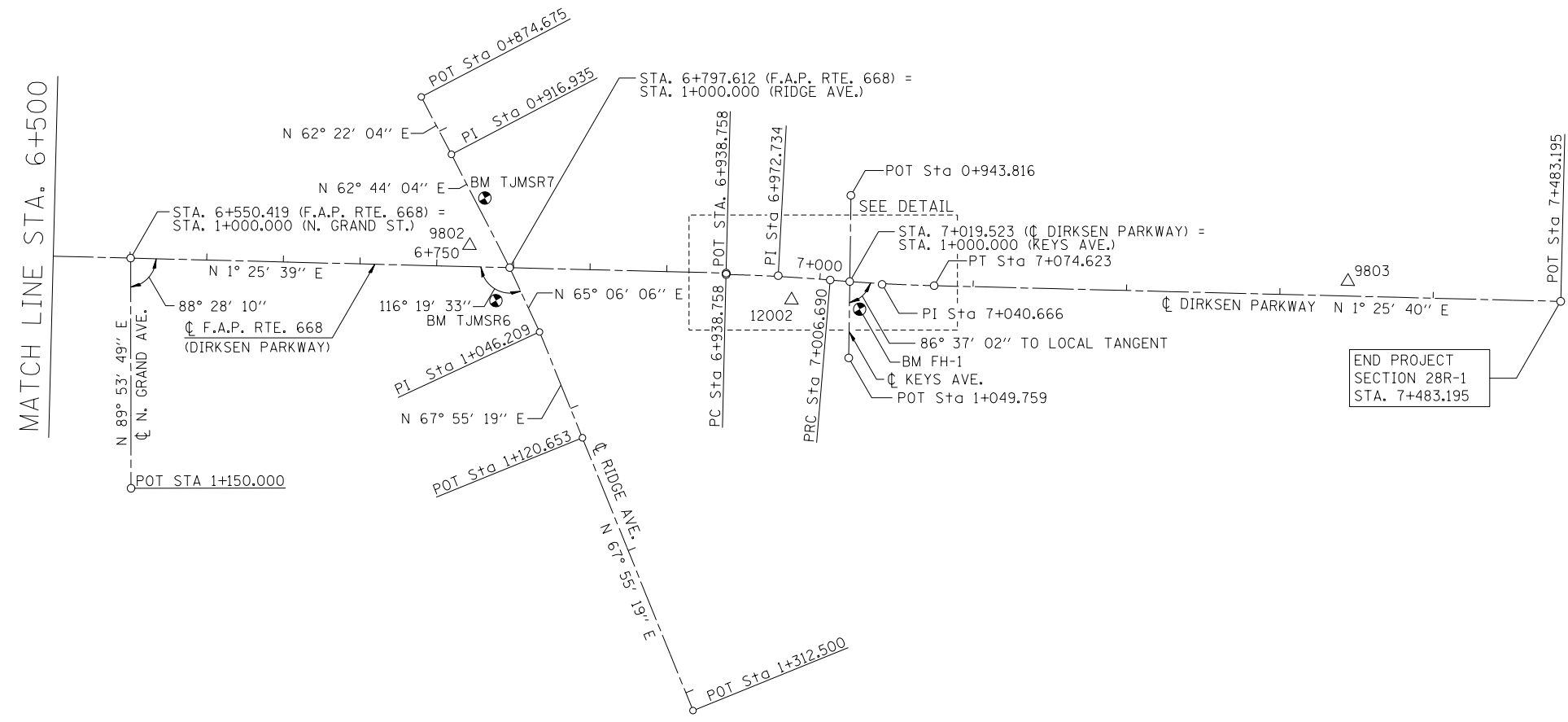
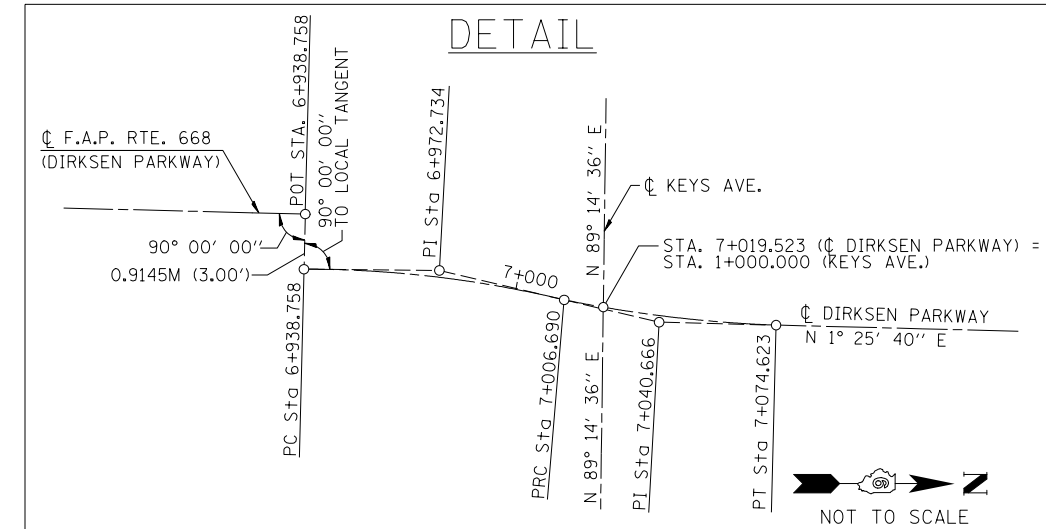
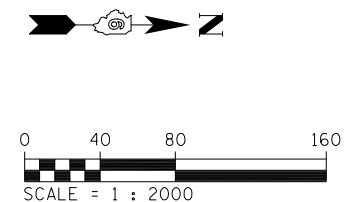


F.A.P. RTE.	SECTION	COUNTY	TOTAL SHEETS	SHEET NO.
668	28R-1	SANGAMON	354	52
STA. 6+500.000		TO STA. 7+483.195		
FED. ROAD DIST. NO.		ILLINOIS	FED. AID PROJECT	
CONTRACT NO. 72501				



**DIRKSEN PARKWAY**

PROP. CURVE 38	PROP. CURVE 37
PI STA. = 69+72.734	PI STA. = 7+040.666
$\Delta = 3^\circ 25' 35''$ (RT)	$\Delta = 3^\circ 20' 35''$ (LT)
D = $5^\circ 02' 37''$	D = $4^\circ 55' 16''$
R = 1,135.99'	R = 1,164.28'
T = 33.98'	T = 33.98'
L = 67.93'	L = 67.93'
E = 0.51'	E = 0.50'
P.C. STA. = 6+938.758	P.C. STA. = 7+006.690
P.T. STA. = 7+006.690	P.T. STA. = 7+074.623



REVISIONS	
NAME	DATE

ILLINOIS DEPARTMENT OF TRANSPORTATION  
HORIZONTAL ALIGNMENT & TIES  
F.A.P. ROUTE 668 (DIRKSEN PARKWAY)  
SECTION 28R-1  
SANGAMON COUNTY

SCALE 1 : 2000  
DATE 06/2013

DRAWN BY DAS  
CHECKED BY GLW

FINAL SURVEY	SURVEYED	BY	DATE
NO.	PLOTTED		
	TEMPLATE		
	AREAS		
	CHECKED		

ORIGINAL SURVEY	SURVEYED	BY	DATE
NO.	PLOTTED		
	TEMPLATE		
	AREAS		
	CHECKED		