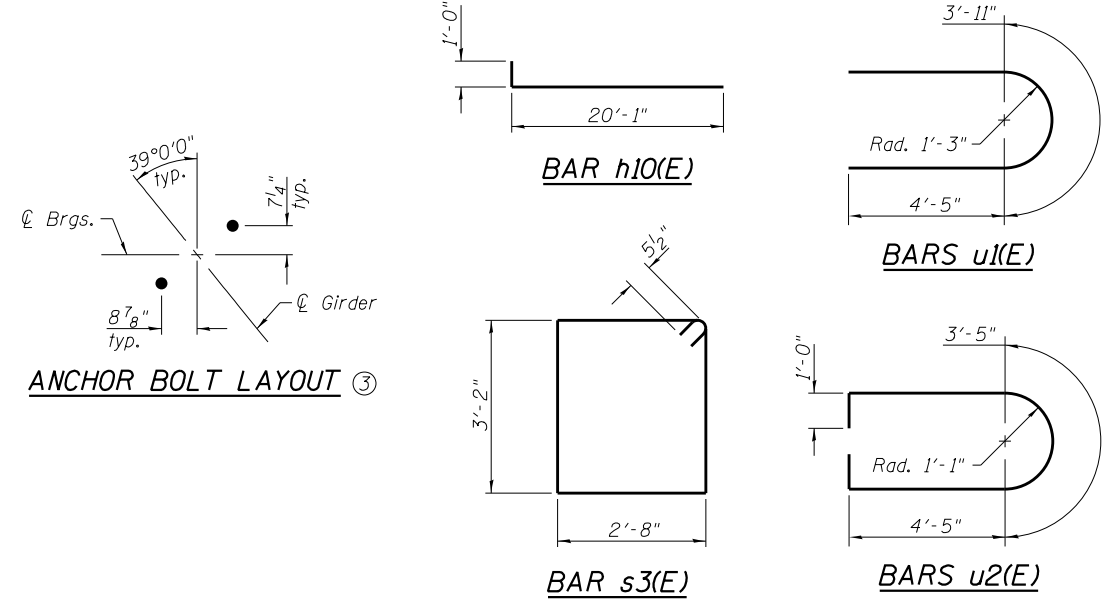
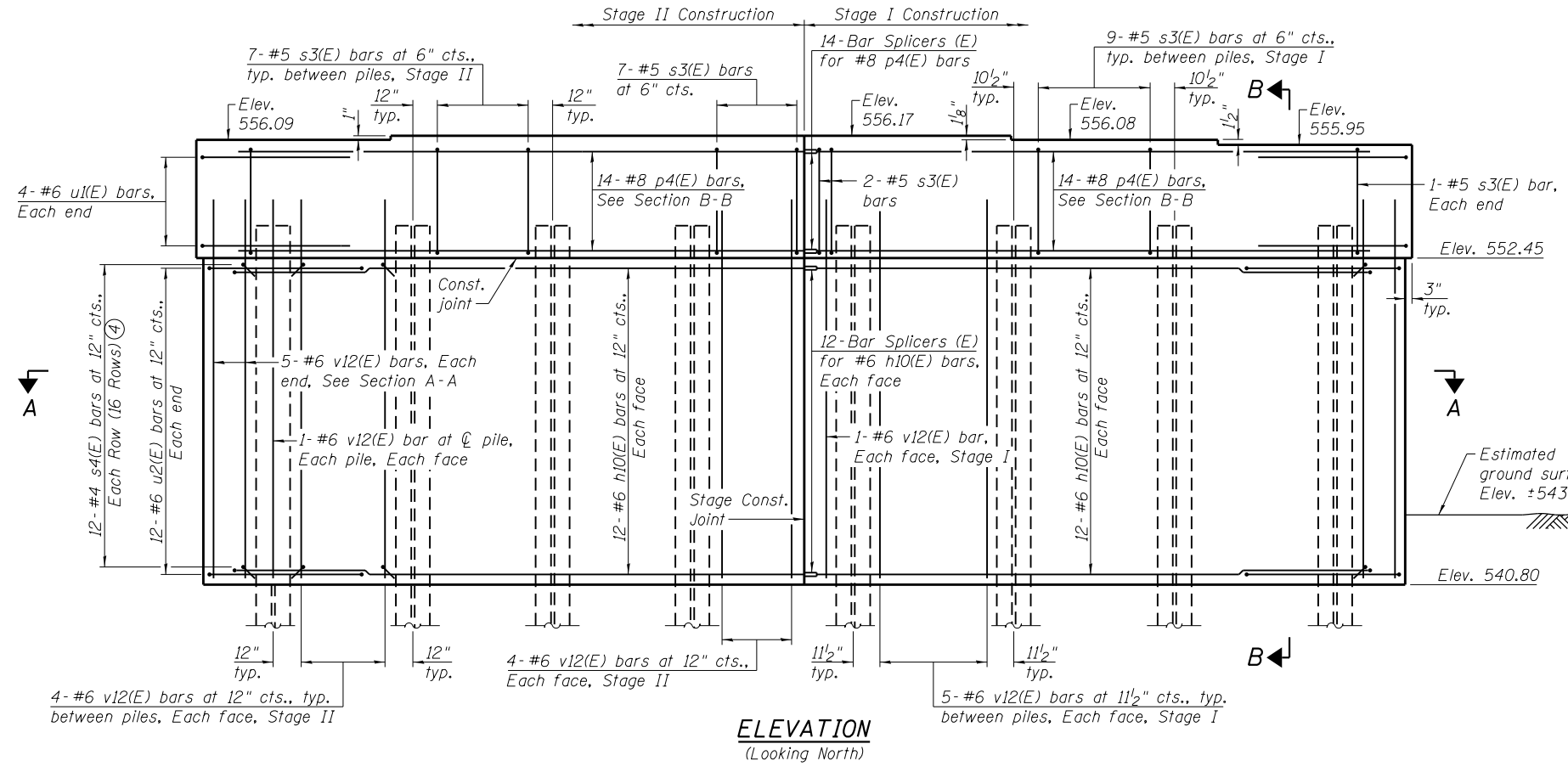


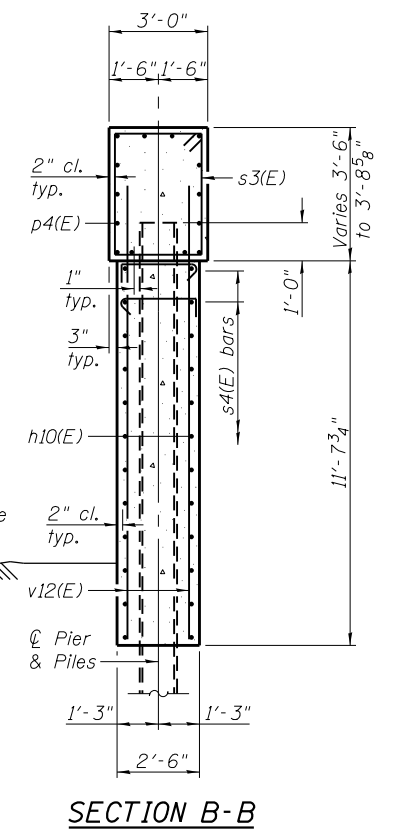
TOP PLAN



ANCHOR BOLT LAYOUT (3)



ELEVATION
(Looking North)



SECTION B-B

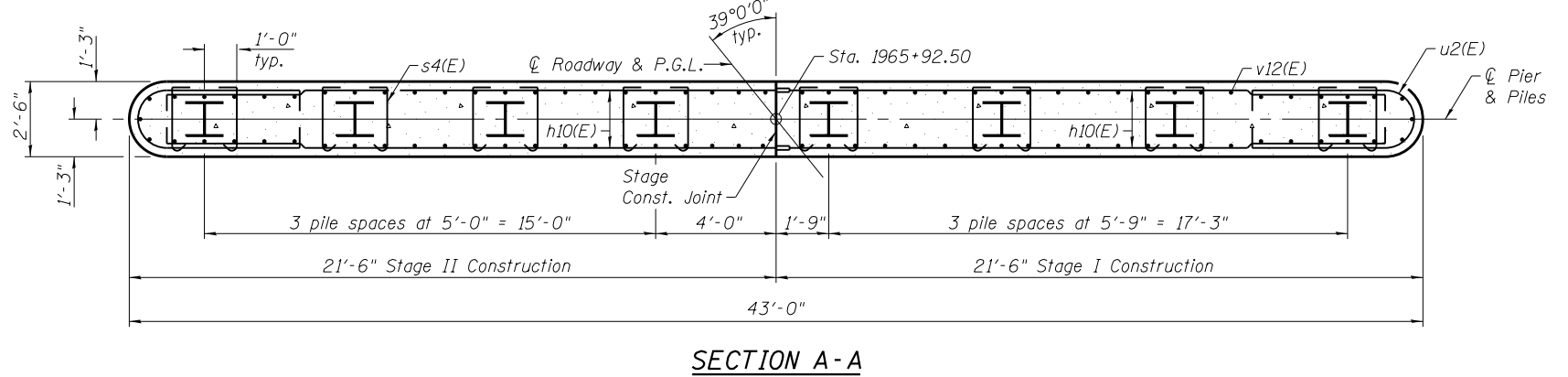
PILE DATA

Type: Steel HP14x73
 Nominal Required Bearing: 578 kips
 Factored Resistance Available: 317 kips
 Est. Length: 38 ft
 No. Production Piles: 7
 No. Test Piles: 1

BILL OF MATERIAL

Bar	No.	Size	Length	Shape
h10(E)	48	#6	21'-1"	—
p4(E)	28	#8	20'-1"	—
s3(E)	59	#5	12'-7"	□
s4(E)	192	#4	3'-3"	┌
u1(E)	8	#6	12'-9"	U
u2(E)	24	#6	14'-3"	U
v12(E)	90	#6	13'-9"	—
Structure Excavation		Cu. Yd.		28
Concrete Structures		Cu. Yd.		63.2
Reinforcement Bars, Epoxy Coated		Pound		6,740
Furnishing Steel Piles HP14x73		Foot		266
Driving Piles		Foot		266
Test Pile Steel HP14x73		Each		1

- Notes:
- ① Pour steps monolithically with cap.
 - ② For details of piles, see sheet 50 of 62.
 - ③ Space reinforcement in cap to miss anchor bolts.
 - ④ Space s4(E) bars vertically with h10(E) bars and horizontally as shown in Section A-A. Alternate s4(E) bars end for end as shown in Section B-B.
 - ⑤ For details of Bar Splicers, see sheet 51 of 62.



SECTION A-A



15410
 Eastern Business Center 1
 100 Lamar Court, Suite 1
 Chicago, IL 60654
 Tel: 618.345.2200
 Fax: 618.345.7253
 www.oatesassociates.com

18504
 Lakeside Corporate Center
 7200 W. Lake Street, Suite 1000
 Skokie, IL 60077
 Tel: 847.588.3381
 Fax: 847.588.9605

USER NAME =	DESIGNED - JAD	REVISED
	CHECKED - SUN	REVISED
PLOT SCALE =	DRAWN - DBB	REVISED
PLOT DATE =	CHECKED - SUN	REVISED

STATE OF ILLINOIS
DEPARTMENT OF TRANSPORTATION

PIER 1 DETAILS
STRUCTURE NO. 048-0100
 SHEET NO. 43 OF 62 SHEETS

F.A.P. RTE.	SECTION	COUNTY	TOTAL SHEETS	SHEET NO.
626	(44-B-1)BR	KNOX	122	73
CONTRACT NO. 68759				

ILLINOIS FED. AID PROJECT